



iVIEW-754TPC Logic Board Replacement

A bad logic board can cause a large number of...

Written By: Robert Clark



INTRODUCTION

A bad logic board can cause a large number of problems, ranging from slow performance to a completely non-functional device. Use this guide to replace a faulty logic board.

TOOLS:

[iFixit Opening Tool](#) (1)

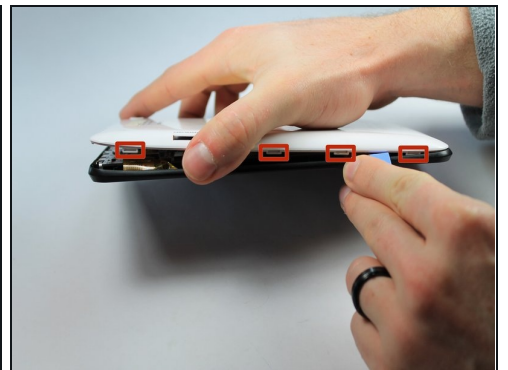
[Spudger](#) (1)

[Tweezers](#) (1)

[Phillips #2 Screwdriver](#) (1)

[Magnetic Project Mat](#) (1)

Step 1 — Rear Panel



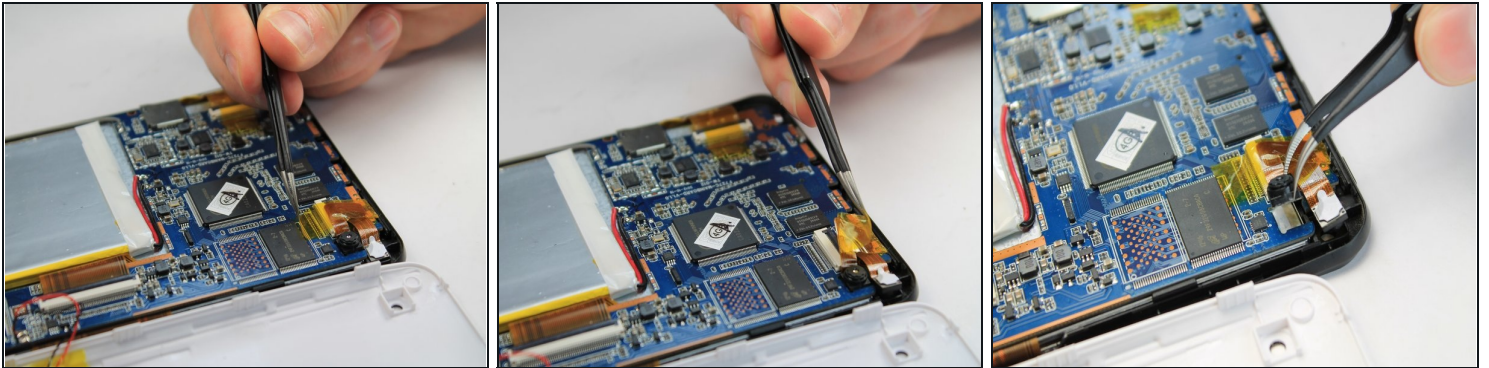
- ⓘ Before disassembling your tablet, make sure it is powered off.
- Use plastic opening tool to release the clips holding the device together. The clips will take a small amount of pressure to release. Once you have the plastic opening tool inserted, use a twisting action to release the clips. Start from bottom of device and work all the way around.

Step 2 — Remove Battery



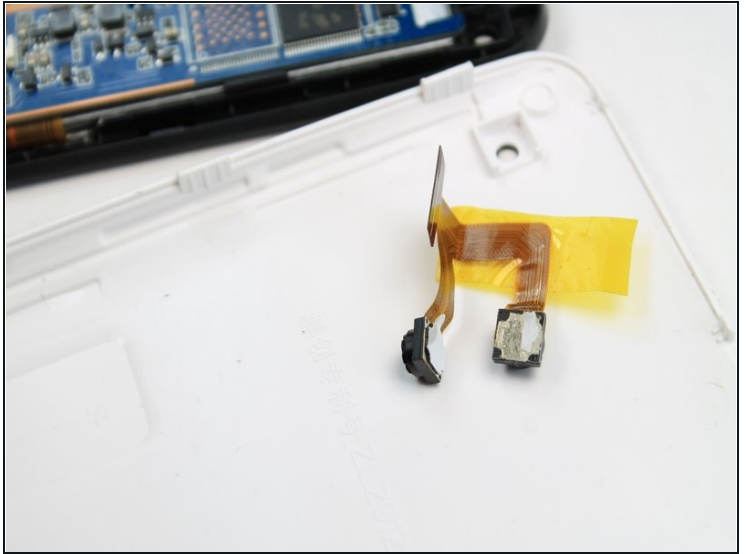
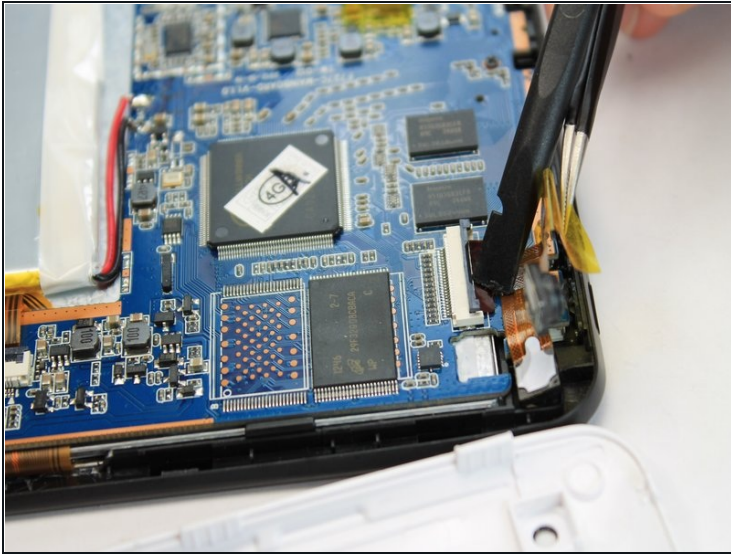
- Use flat side of the spudger to get under battery and use pressure to release from glue. Do this all the way around battery until it comes off.
- ① At this point do not attempt to fully remove the battery as it is still attached to the logic board.

Step 3 — Camera Assembly



- The camera module is located directly under the top right corner of the back cover.
- Peel back the tape holding down the camera ribbon connector using a pair of [tweezers](#).
- ① As you peel the tape backward, the front facing camera may come out, this is not an issue.
- If the front facing camera does not come out, gently lift it out with a pair of tweezers

Step 4 — Remove Camera



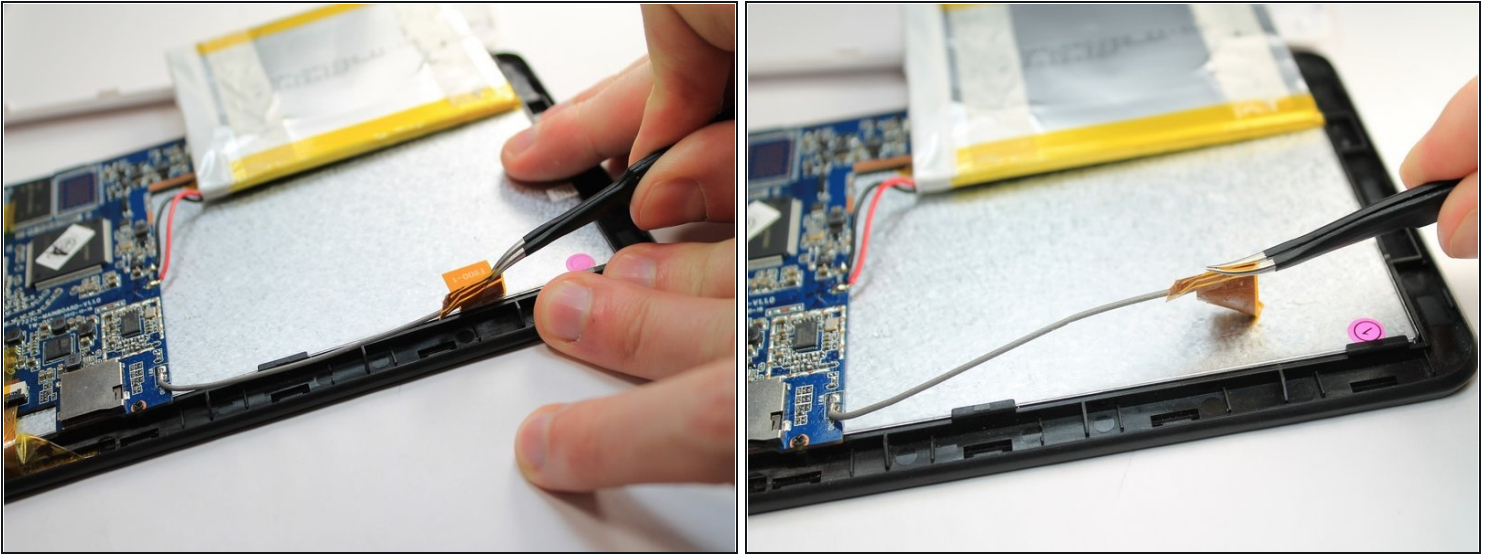
- Use a spudger to lift flap on top of the camera ZIF adapter.
 - At this point the camera module can be easily removed with a pair of tweezers.
- ⓘ During reassembly, make sure you put the ZIF adapter snugly back into its socket and secure the flap.

Step 5 — Logic Board



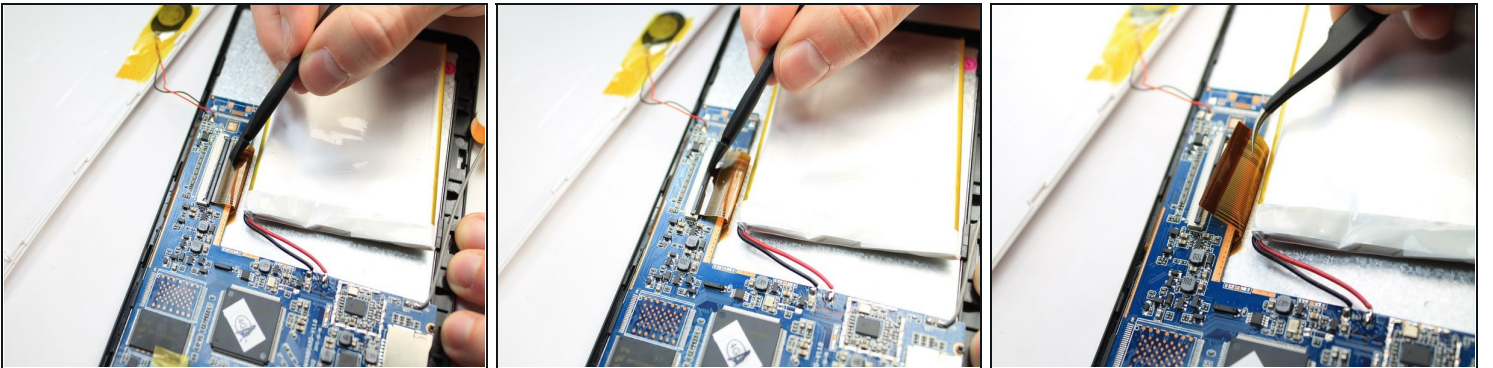
- Remove the four 2.2mm Phillips screws holding the logic board in place. Place the screws on the iFixit magnetic project mat.

Step 6 — WIFI Antenna



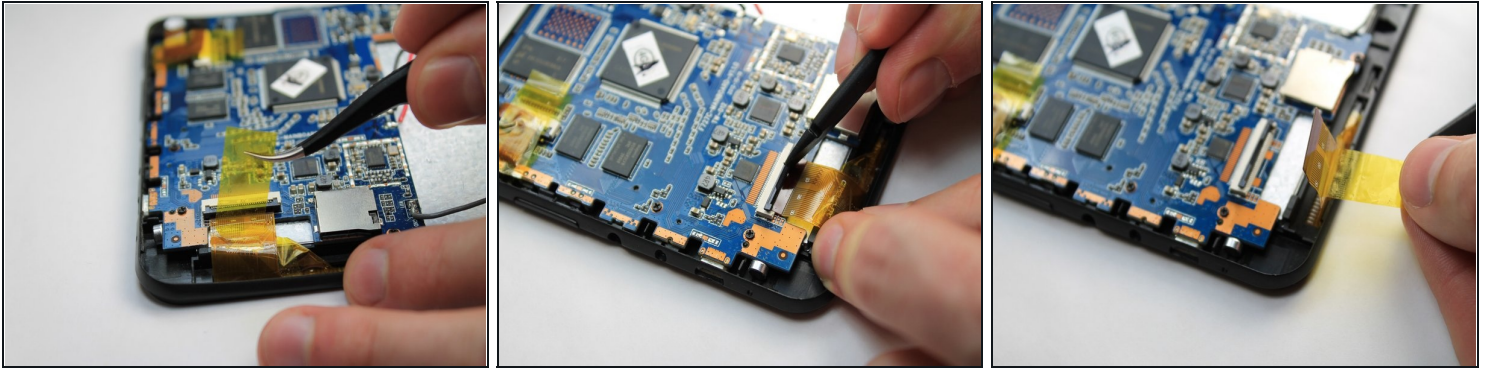
- Gently peel the WIFI Antenna up using a pair of [tweezers](#).

Step 7 — Disconnect LCD



- Use a spudger to lift the flap on top of the LCD ZIF socket.
- Gently remove the ribbon cable from the socket using a tweezers.

Step 8 — Disconnect Digitizer



- Use a spudger to lift the flap on top of the digitizer ZIF socket.
- Gently pull the tape attached to the ribbon cable to remove the cable from its socket.

Step 9 — Remove Logic Board



- Gently slide the spudger below the logic board at the left side nearest the battery. Lift upward and away from the power button and bottom connectors.

⚠ The battery is still attached to the logic board. Be careful to not tear the two apart during removal.

To reassemble your device, follow these instructions in reverse order.