



LG 1010 Front Cover Replacement

How to replace the front and back case in the LG 1010 cellular phone.

Written By: Nicholas Schmidt





TOOLS:

- Flathead 3/32" or 2.5 mm Screwdriver (1)
- Spudger (1)
- T6 Torx Screwdriver (1)

Step 1 — Front Cover



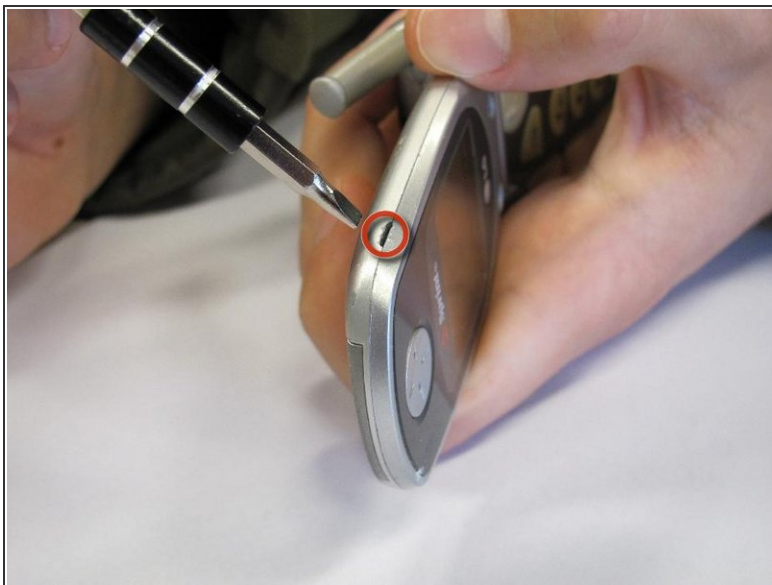
- Use a Spudger to remove the two front plastic covers to reveal screws.

Step 2



- Remove two screws using a Torx T6 screwdriver.

Step 3



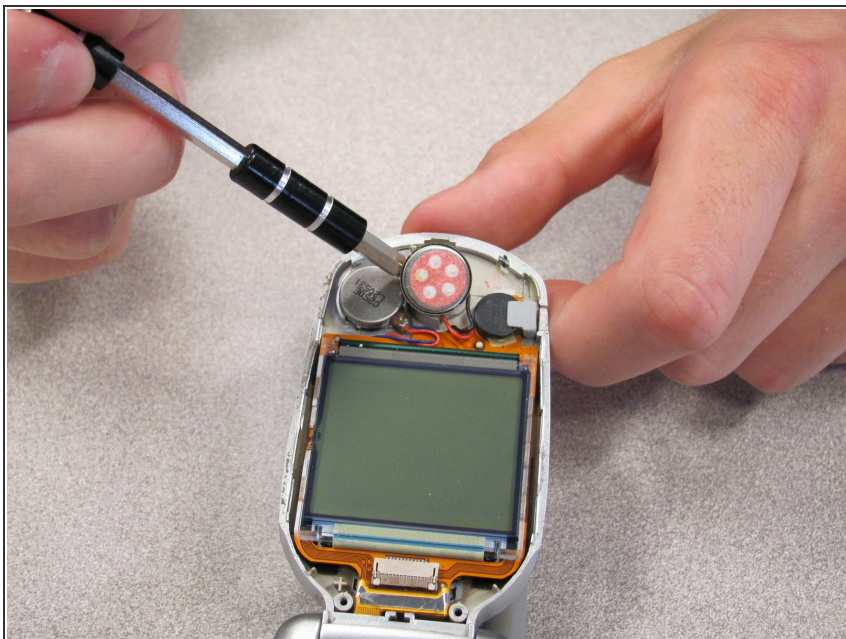
- Pry off the screen front cover with a small flathead screwdriver.

Step 4



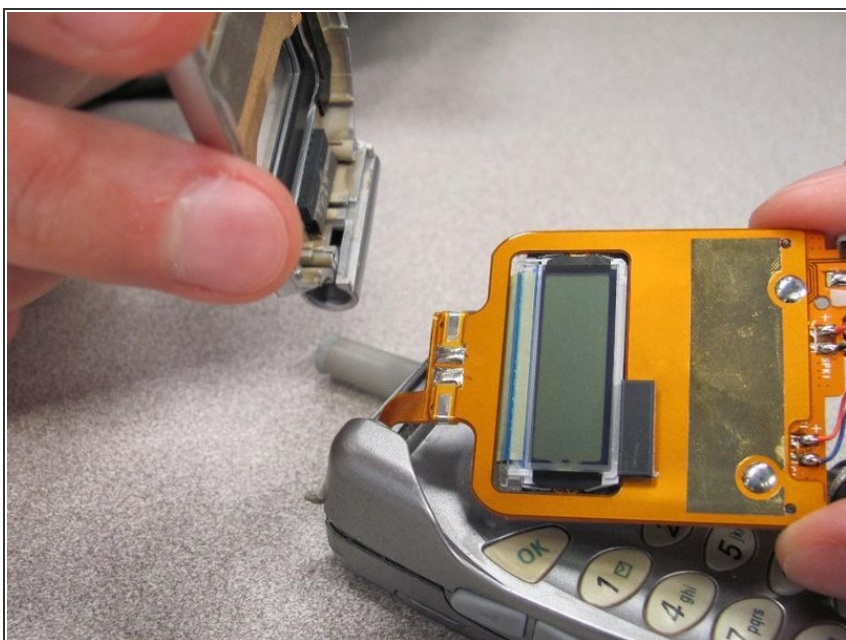
- Insert a small flathead screwdriver into the hinge and separate hinge connection.

Step 5



- Pry off the speaker which is glued on to the front cover using a small flathead screwdriver.

Step 6



- Remove remaining portion of the front case from the flexible circuit board.
- ⚠ Do not attempt to remove the LCD board at this time, as it is attached to the rear panel assembly.

To reassemble your device, follow these instructions in reverse order.