



Acer Aspire One ZG5 Keyboard Replacement

This guide will show you how to install a new keyboard.

Written By: Doug Gallatin



INTRODUCTION

It is very straight-forward install a new keyboard; only three tabs and a cable hold it in place.



TOOLS:

- [Spudger](#) (1)
-

Step 1 — Battery



- Turn the netbook upside down with the battery at the top, facing away from you.

Step 2



- Unlock the battery by sliding the switch located near the left hinge to the left "unlocked" position.

Step 3



- Slide the latch located on the opposite hinge from the lock while pushing the battery up.

Step 4 — Keyboard



- Turn the netbook over and open the display so that the keyboard is facing you.

Step 5



- There are three tabs located on the top of the keyboard.
- Start with the spudger pointing towards the display and pry up to push each tab off the keyboard.
- As you move to the next tab, ensure the previous tab doesn't reset itself.

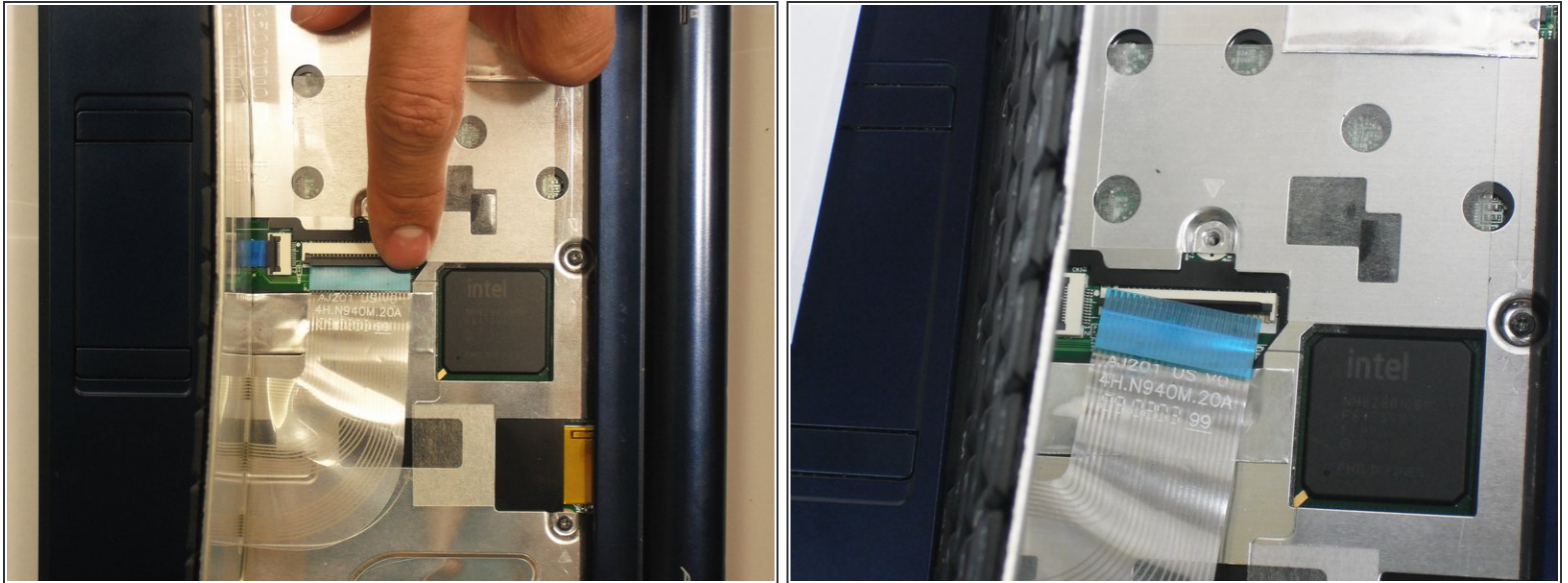
Step 6



- Lift top of keyboard up. If it doesn't lift easily, there may be tabs on the sides - use the tool to ease them aside and/or shift the keyboard from side to side.

⚠ There is a short ribbon cable connecting the keyboard to the netbook.

Step 7



- Disconnect the ribbon by lifting the black plastic hinge and removing the clear blue cable.

To reassemble your device, follow these instructions in reverse order.