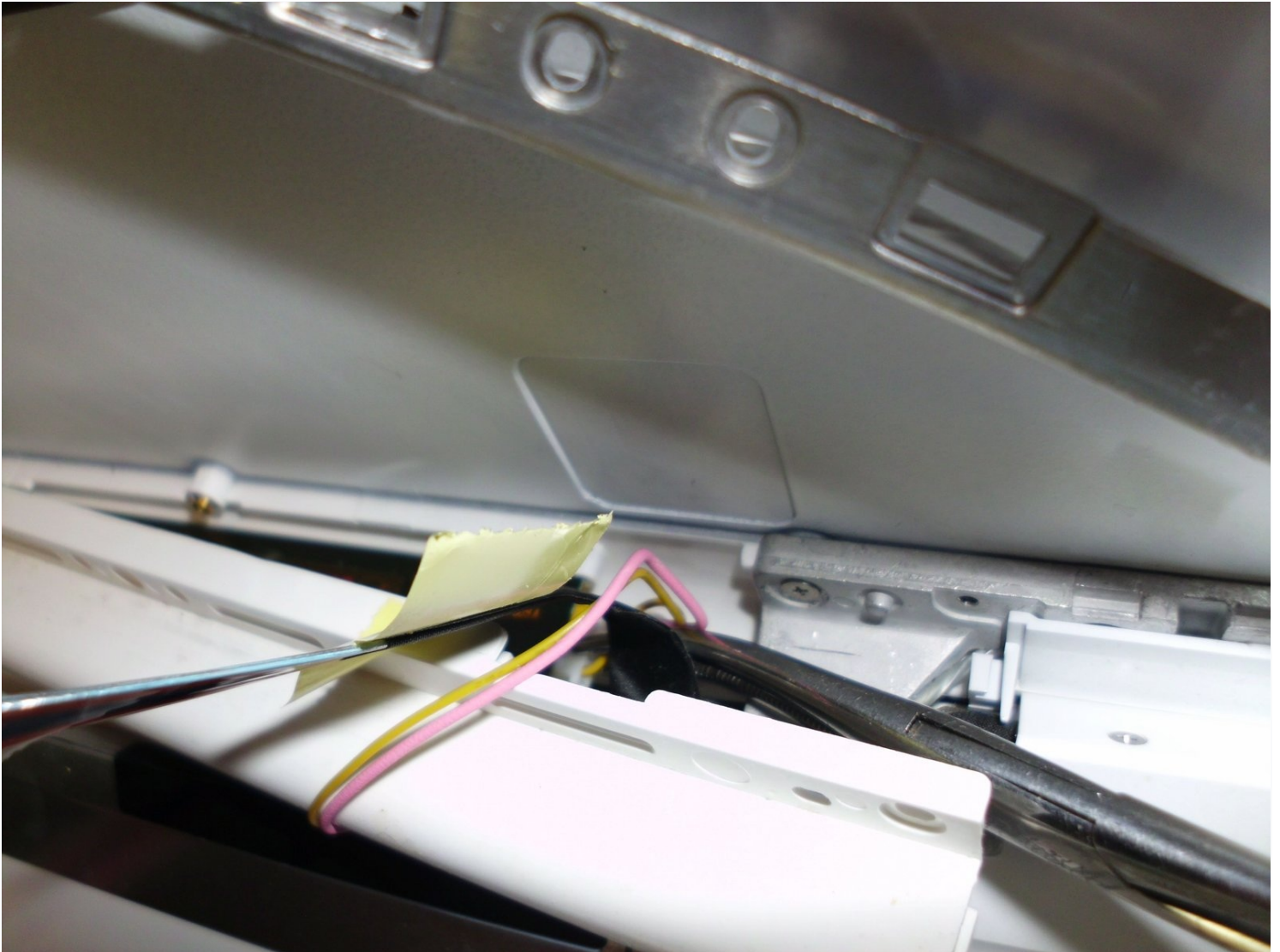




# MacBook Core 2 Duo LCD & Inverter A1181 (fast method) Replacement

The guide for replacing the LCD and/or inverter...

Written By: mayer



# INTRODUCTION

The guide for replacing the LCD and/or inverter on the MacBook is very long and involved. This method is faster with fewer steps but you have to modify one of the clutch cover retainer clips to do it smoothly.

---

## 🔧 TOOLS:

Phillips #00 Screwdriver (1)

Spudger (1)

Flush Cutter (1)

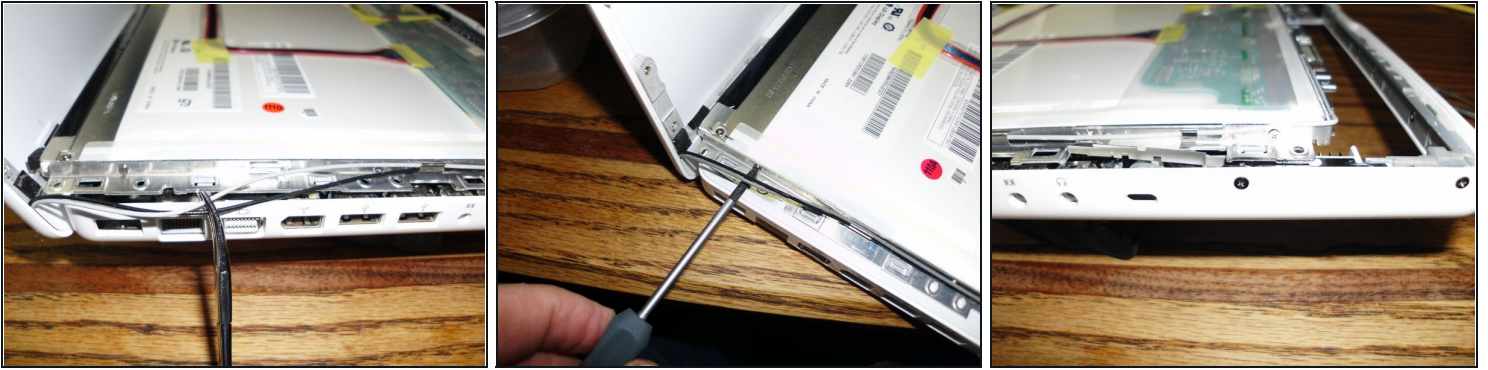
---

## Step 1 — Installing LCD & Inverter (fast method) A1181



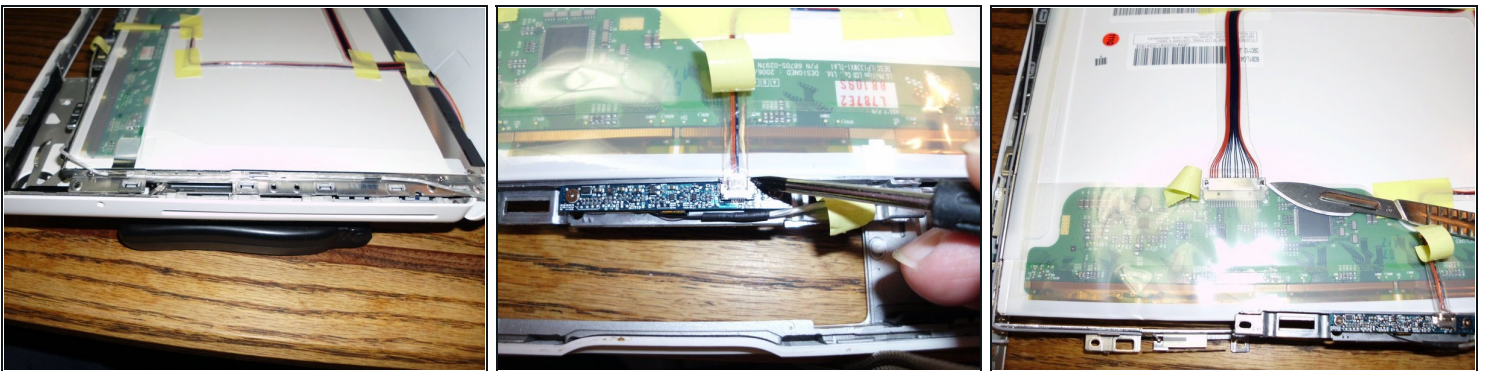
- Although not necessary, I've removed the keyboard and battery to reduce weight, preventing the unit from constantly falling over. Here the bezel has been removed.
- It's likely the clips will stick to the bezel. Remove them and place them back in the metal frame around the LCD. Cover them when prying them off the bezel unless you like looking on the floor for tiny parts.

## Step 2



- There are three Phillips screws to be removed here
- There are 3 on the left, two on the top and 3 on the right.

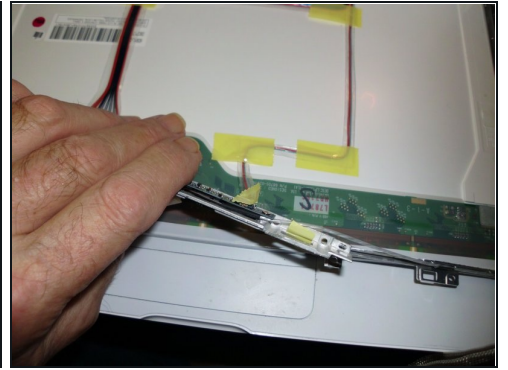
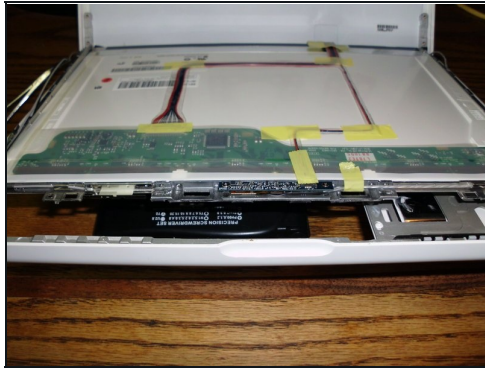
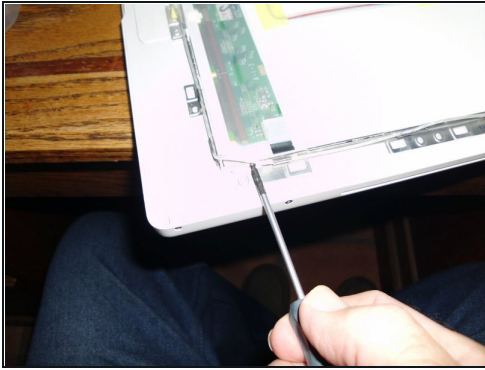
## Step 3



- Remove more screws
- The back of the iSight camera comes up without removing screws on either side. Be careful not to lose track of the lens cover. It may or may not stay with the bezel.
- Third photo here... A blade or better, a spudger here to disconnect the cable here. Pry and slide this connection (towards the top of this photo).

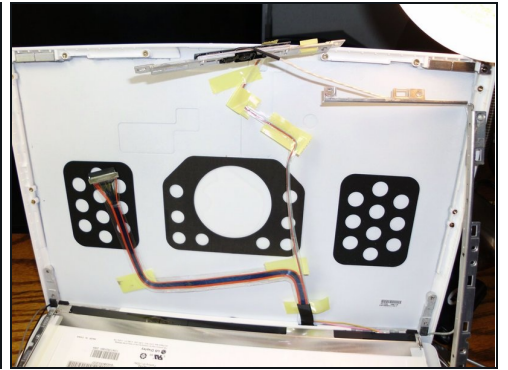
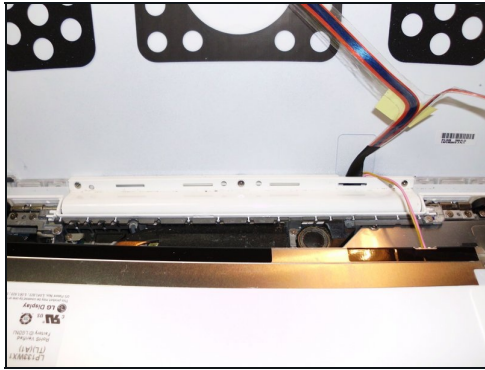
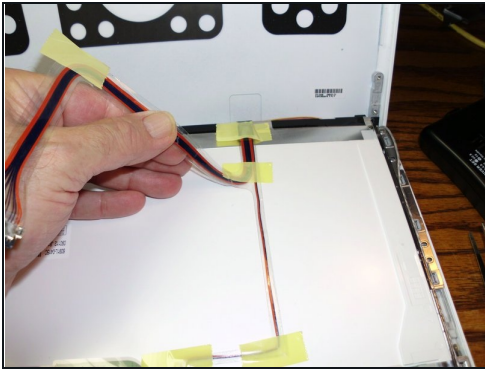


## Step 4



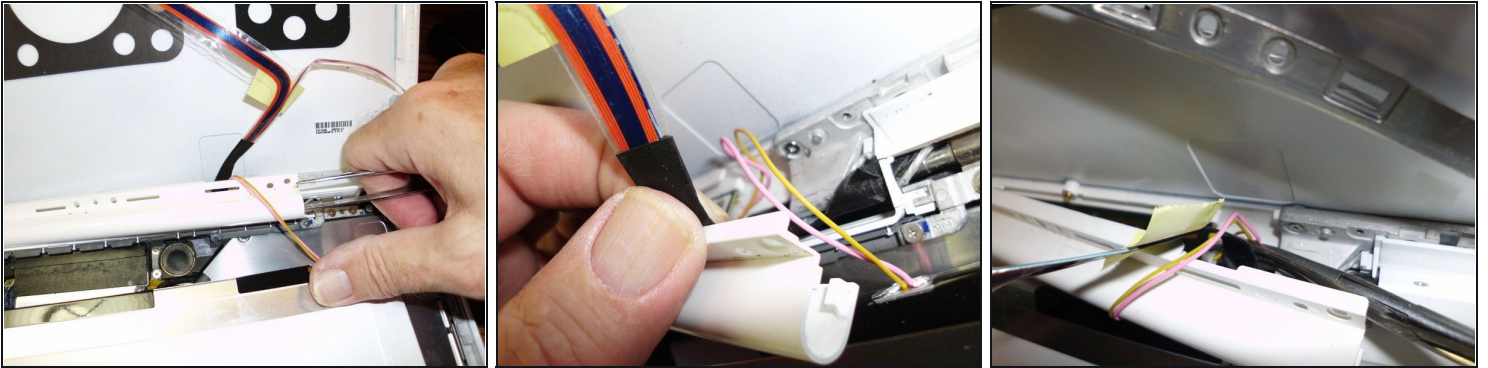
- Photo 3 shows the lifting of the iSight Camera board. Lift this and the other cable connection and the metal frame you've just unscrewed up and tape to the back of the screen case.
- NO need to disconnect the cable to the camera - lift the whole thing up.

## Step 5



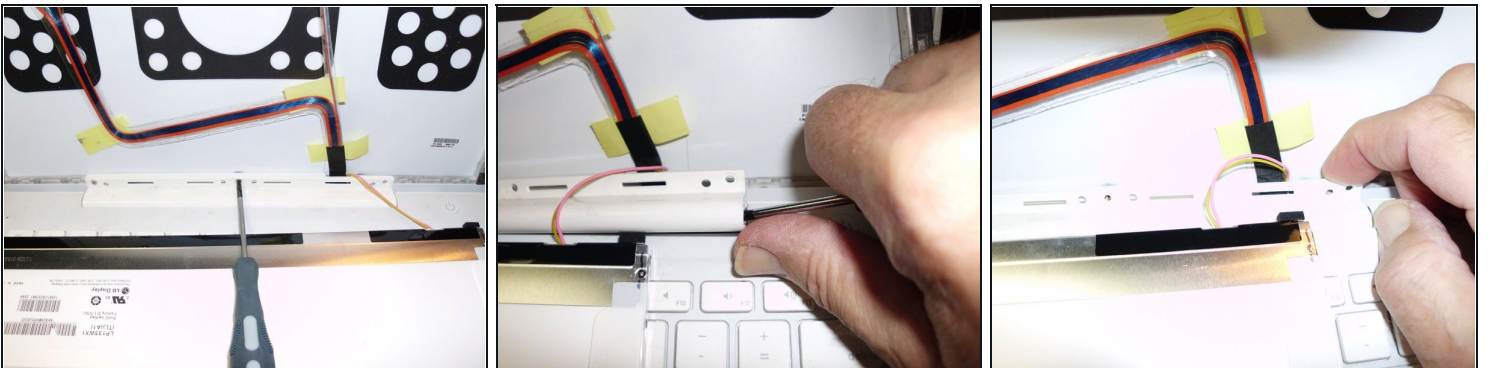
- Note placement of cables into clutch cover
- At this point I tape the cables up to keep them out of the way.

## Step 6



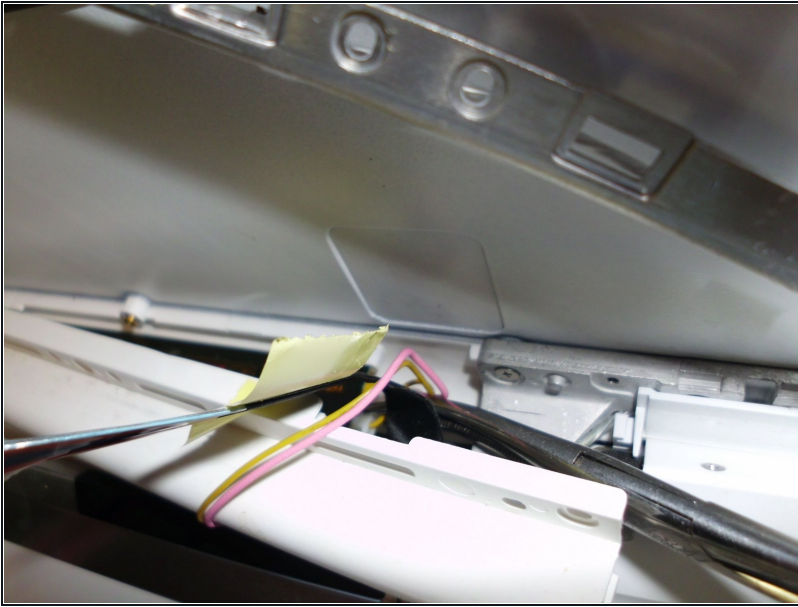
- See Step 7 and come back to here. 3 screws must be removed first. Lift clutch cover up slightly
- Getting the clutch cover up is going to be the most difficult part. You'll feel like you're going to break it. There are also two little plastic parts on each end of the clutch cover. They're easy enough to remove so you don't use them as a fulcrum. Be careful though - they also tend to fly fast and high when being pried out.

## Step 7



- Remove three Phillips screws holding clutch cover in place.
- Pry up end of cover just enough to gain access to the inverter plug in.
- Use fingers to loosen cover.

## Step 8



- Reveal plug in to inverter board
- Use small hemostat or [tweezers](#) to grasp end of inverter plug in and pull out.
- The LCD is now free to be removed.
- To install an inverter just lift the cover up higher and remove it.
- I was able to leave the left end of the clutch cover 'mostly' in place and unplug both ends of the inverter.
- When replacing the clutch cover inspect the back. I had both ends 'sticking out' a little and had to break the little plastic tabs to make it flush again - or I could have started over and removed everything to properly replace the clutch cover. On a 5 year-old machine I elected to break plastic tabs off the clutch cover.

---

To reassemble your device, follow these instructions in reverse order.

After completing this - my MacBook display still kept going black after 45 - 60 seconds. An SMC Reset fixed the issue. Wish I'd tried this first. Give it a shot... May save you a couple hours.