



# Sennheiser RS120 Battery Replacement

Showing how to replace worn-out batteries in the wireless headphones.

Written By: Gayle Dunham



## INTRODUCTION

The rechargeable batteries are located behind the left ear cushion. Remove the ear cushion by rotating a quarter turn counter clockwise.

If one needs to replace the ear pad and access the battery component such as the batteries or the speaker, you need to remove the ear pad initially. Refer to the ear pad [guide](#) for more help on how to reveal the battery compartment. This guide explains how to remove the batteries and replace. This replacement won't take too long and you won't need any tools for this removal.



### PARTS:

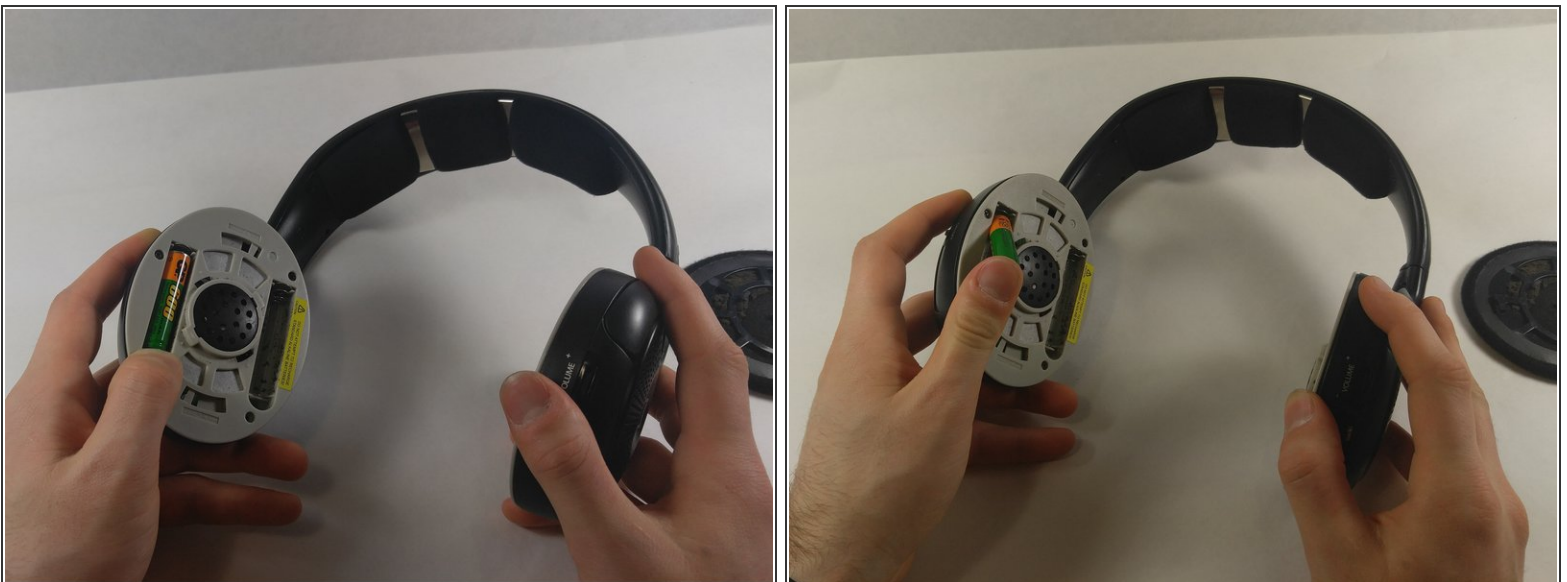
- [Rechargeable AAA Batteries](#) (2)

## Step 1 — Ear Pad



- Grip the ear pad with one hand and steady the headset on the other.
- Twist the ear pad counterclockwise, then lift the ear pad off after about an eighth of an inch of the turn.
- Replace the old ear pad with a new ear pad.

## Step 2 — Battery



- Twist the left ear pad counterclockwise to reveal the battery compartment within the headphone.
- To remove batteries, push inward and lift up.
- The battery should be able to pop out.

To reassemble your device, follow these instructions in reverse order.