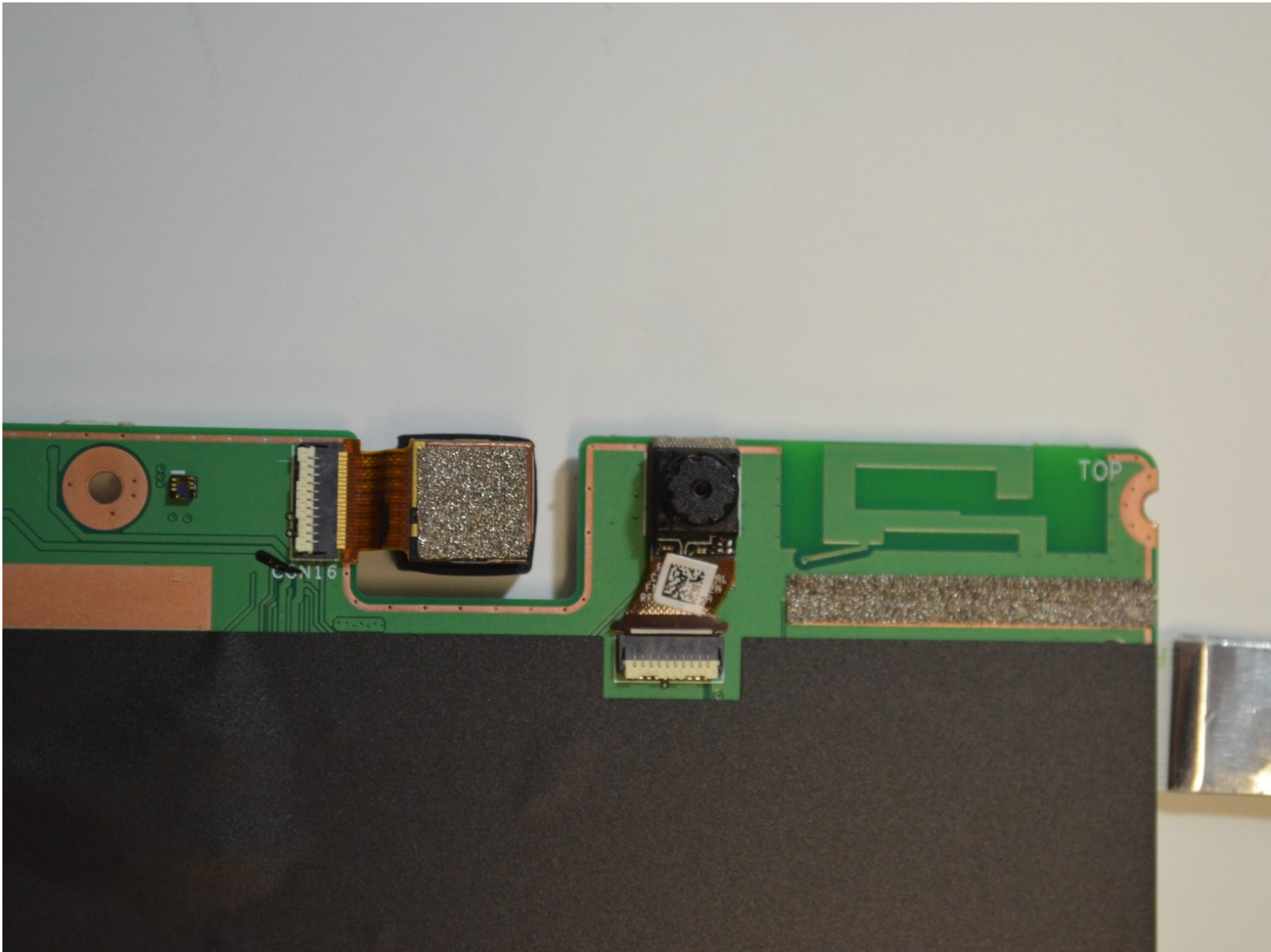




ASUS MeMo Pad FHD10 Camera Replacement

Use this guide to replace the front and rear...

Written By: Dmitry



INTRODUCTION

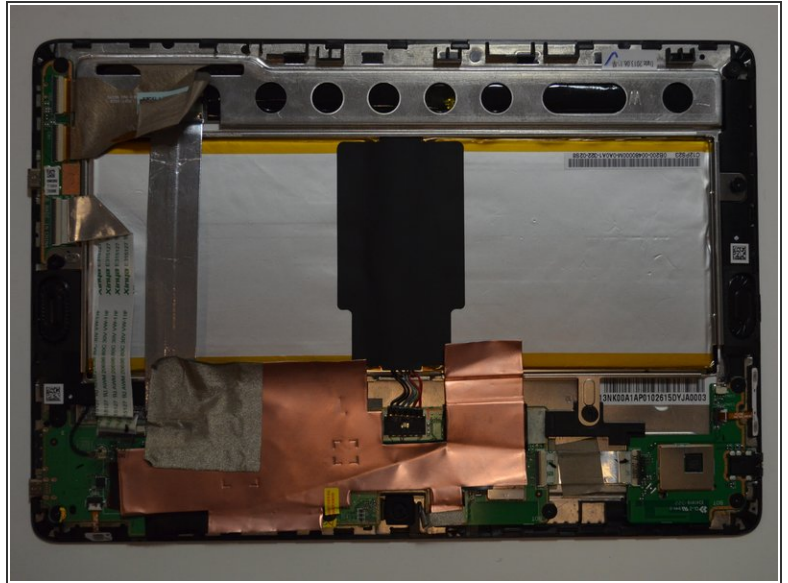
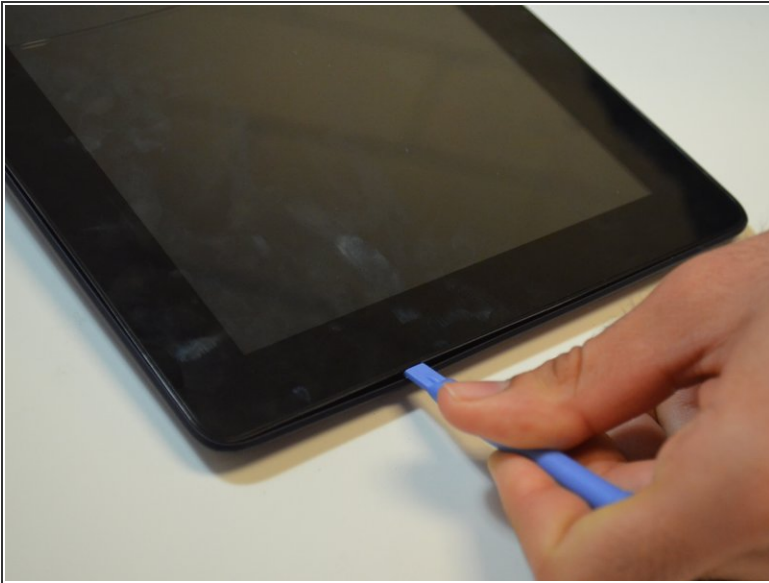
Use this guide to replace the front and rear cameras if they are not working or malfunctioning. This guide could also be used to adjust or clean the cameras in case of blurry camera's display or dislocation.



TOOLS:

- [Tweezers](#) (1)
 - [Phillips #0 Screwdriver](#) (1)
 - [iFixit Opening Tool](#) (1)
-

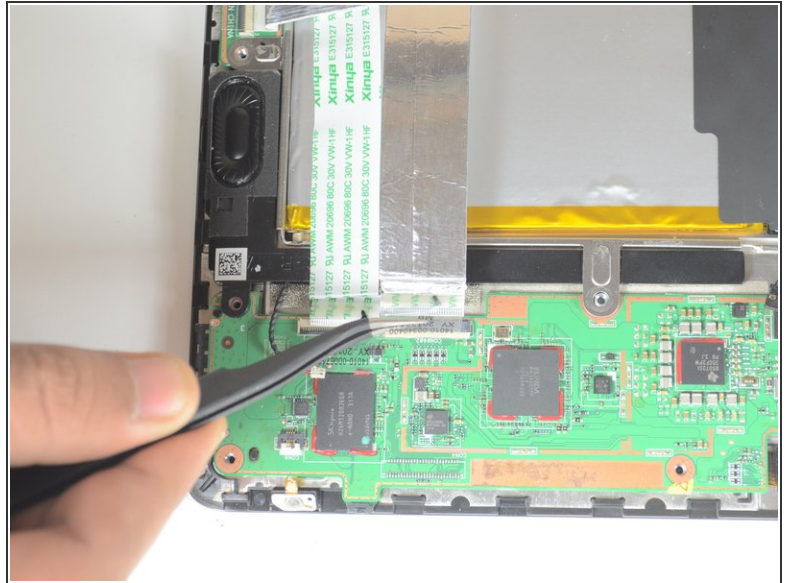
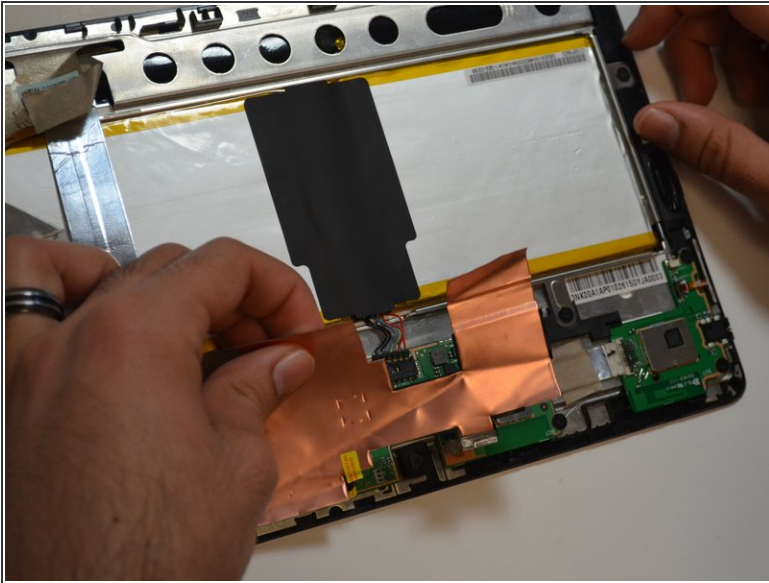
Step 1 — Battery



⚠ Make sure that the device is turned off as a precaution.

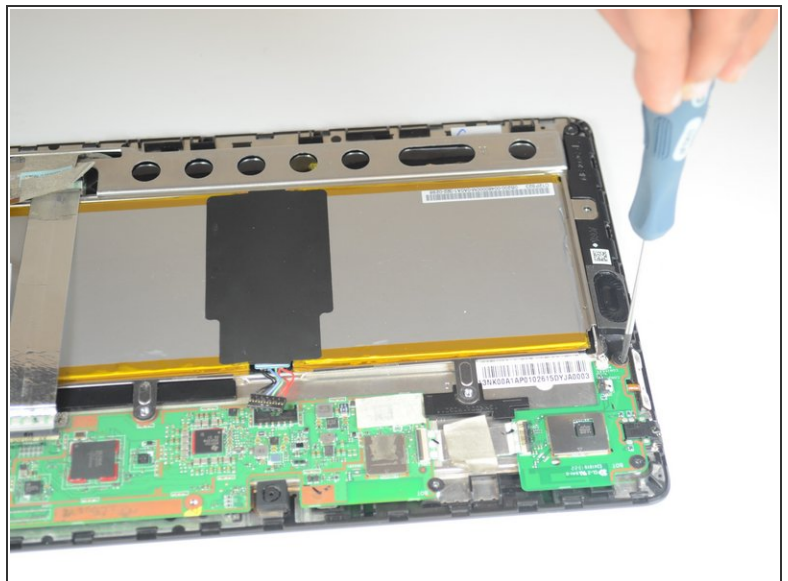
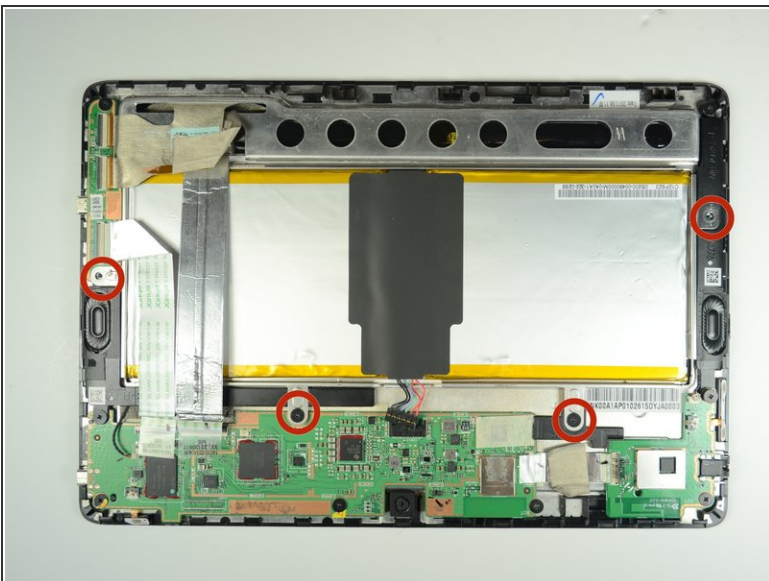
- Unplug the charger and remove any memory card you may have in the device.
- Wedge the plastic opening tool between the front and back cover on every side.
- Slide the plastic opening tool back and forth to make sure that the back cover is disconnected.
- Once disconnected, remove the back cover from the device screen.

Step 2



- Remove the protective copper sticker and all tape fixed on the device.
 - Using tweezers, remove the ribbon cable from their connections attached to the motherboard.
- ⚠ While using the tweezers, make sure to use minimum force and precision to avoid damaging any components.

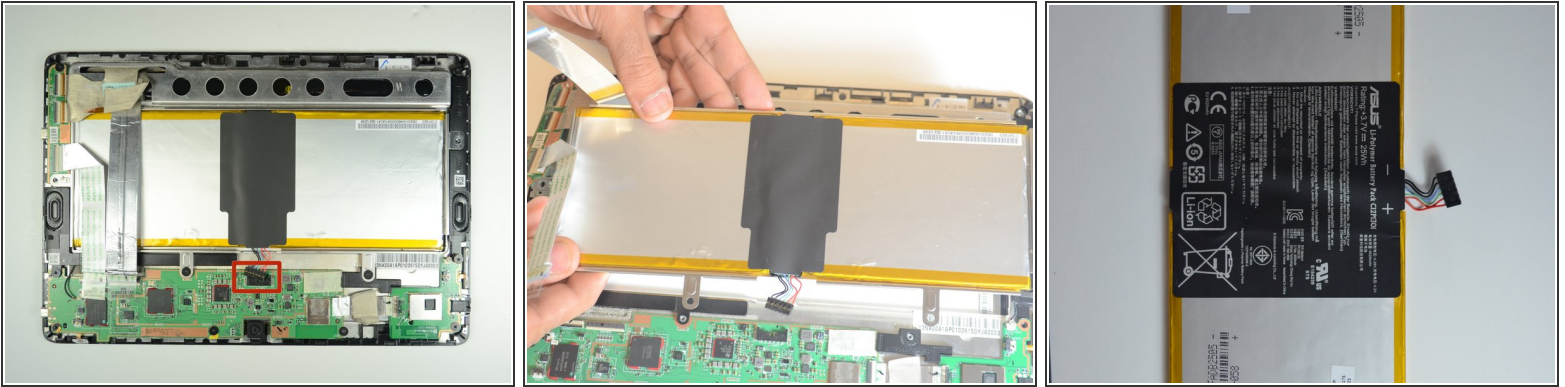
Step 3



- Remove the four 2 mm Phillips #00 screws holding the battery tray in place.

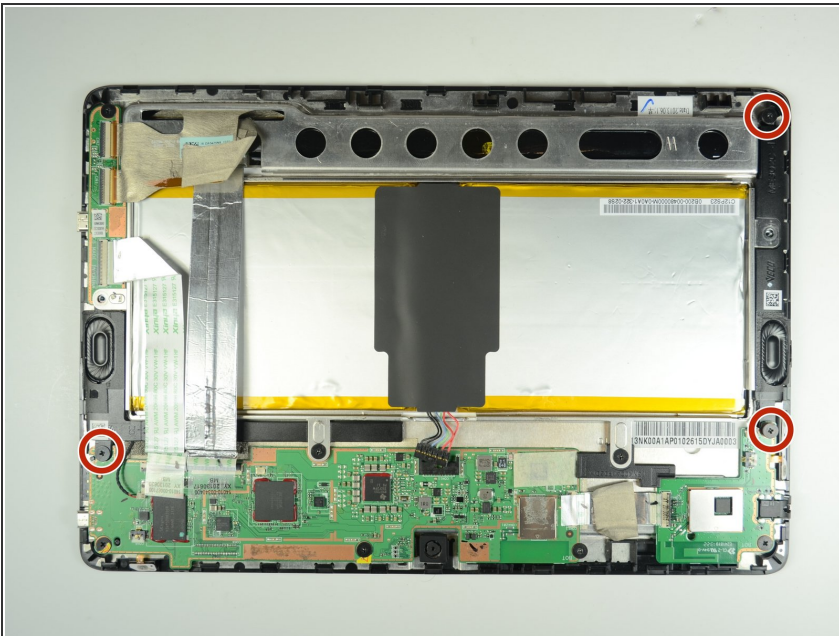
This document was generated on 2023-01-16 07:09:16 PM (MST).

Step 4



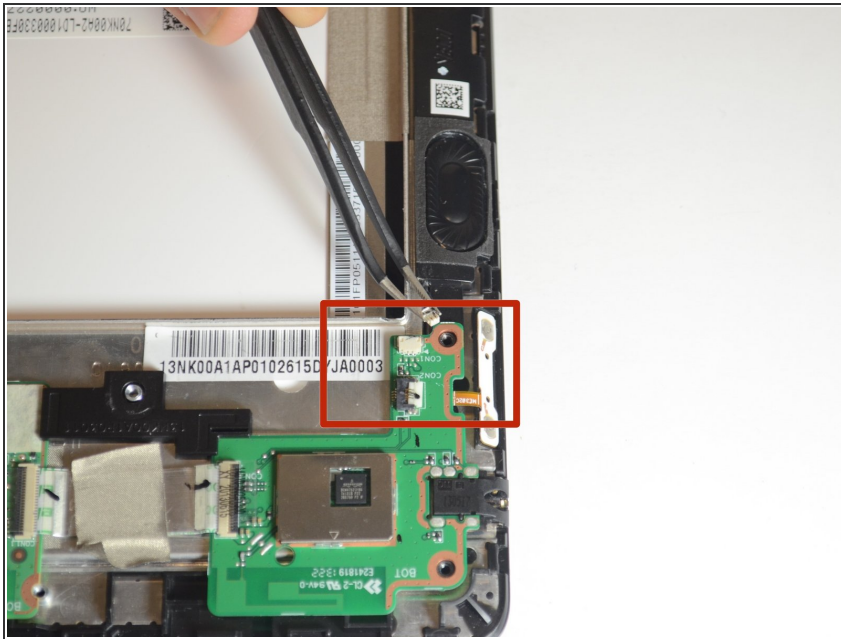
- Locate the battery cable attached to the motherboard. Using the same technique used on the ribbons, do the same with the battery.
- Remove the battery from the device. Once removed, use the plastic tool to separate the metal frame from the battery.
- i When separating the metal frame, be sure to hold on in the center as the battery is two separate cells.

Step 5 — Speakers



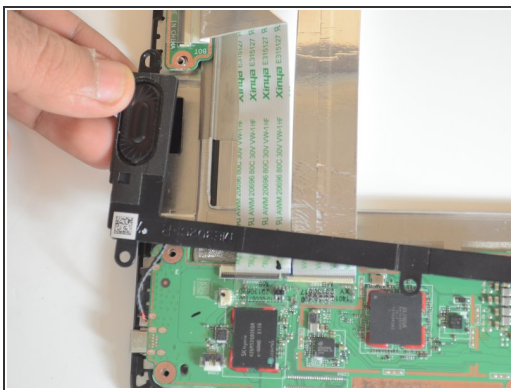
- Remove three screws using a Phillips #00 screwdriver.

Step 6



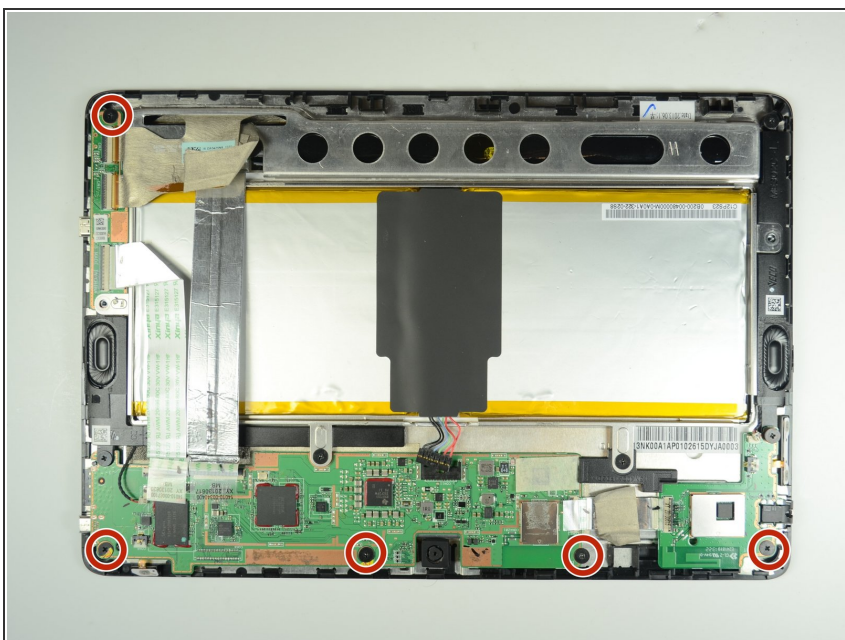
- i** The two speakers are located on opposite sides of the device. Both are long black pieces with connections to the motherboard.
- Unplug the speaker cables from their connections on the motherboard gently by using tweezers.

Step 7



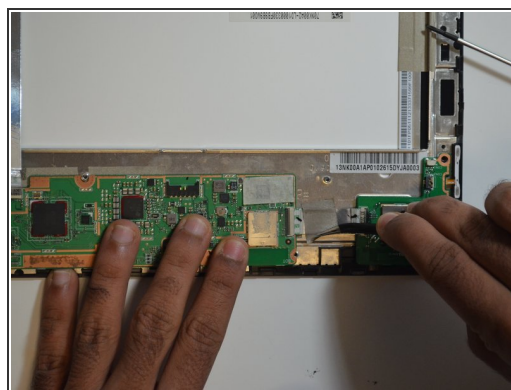
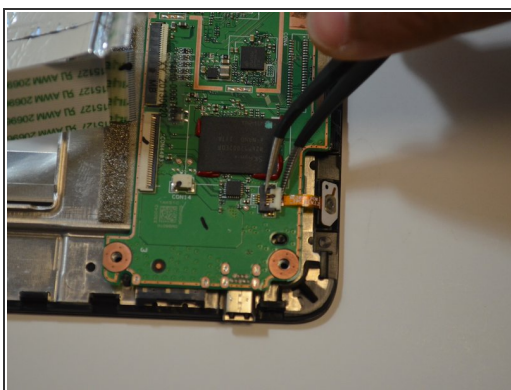
- Gently use your hands to remove the speakers.

Step 8 — Motherboard



- Remove the five screws using a Phillips #00 screwdriver.

Step 9



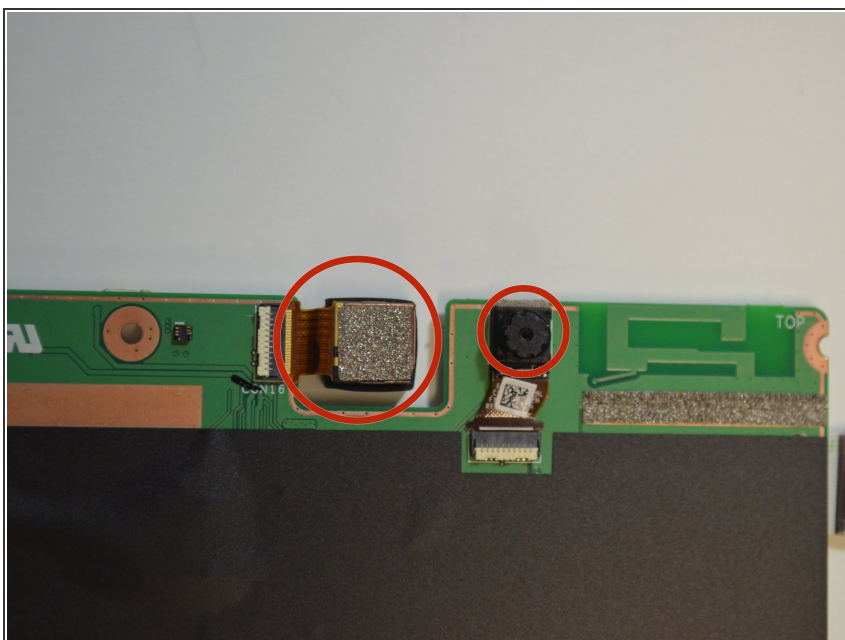
- Carefully disconnect the cord that connects the on/off button to the motherboard
- Peel back the electrical tape holding the connections of the motherboard down to the frame of the device.

Step 10



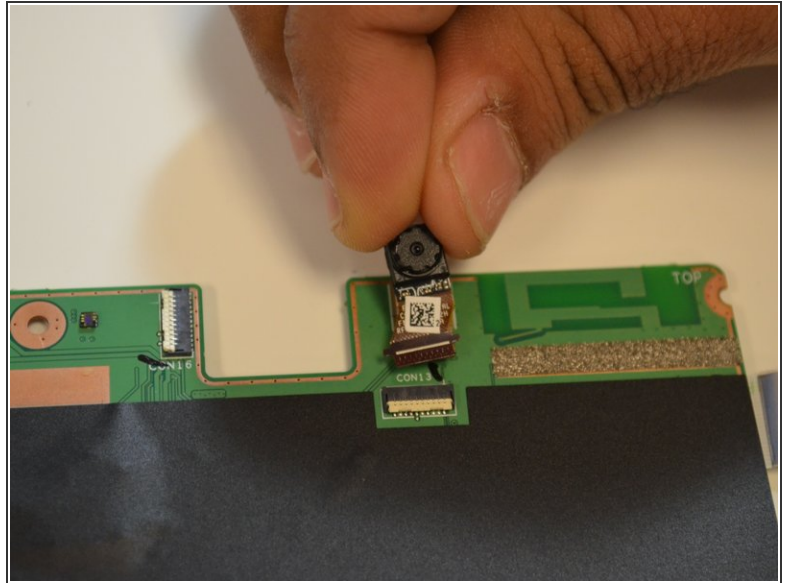
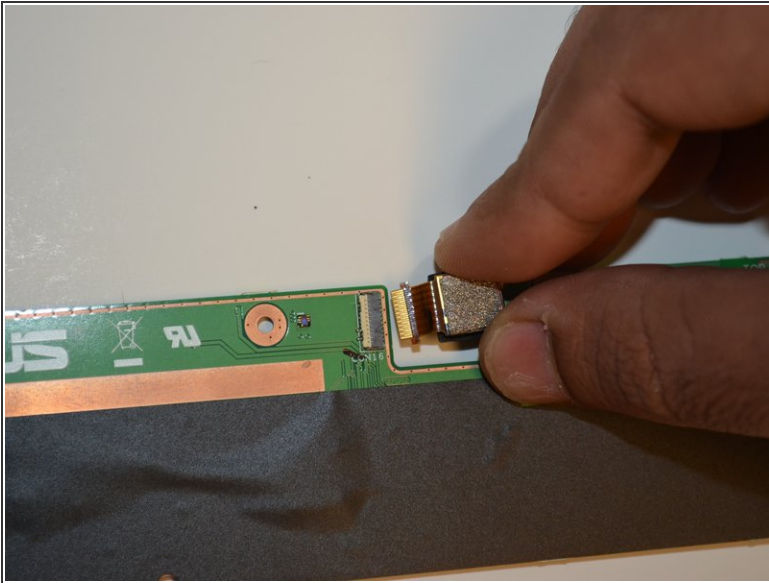
- Use your hands to remove the motherboard from the device.

Step 11 — Front and Rear cameras.



- Identify the location of front and rear cameras on the motherboard.

Step 12



- The front and rear cameras can be removed by pulling them out gently using hands.

To reassemble your device, follow these instructions in reverse order.