



Motorola Moto G 2nd Generation Teardown

Written By: Sophia



INTRODUCTION

[video: <https://www.youtube.com/watch?v=UONIB6mdPUs>]



TOOLS:

- [T5 Torx Screwdriver](#) (1)
 - [Spudger](#) (1)
 - [Tweezers](#) (1)
-

Step 1 — Motorola Moto G 2nd Generation Teardown



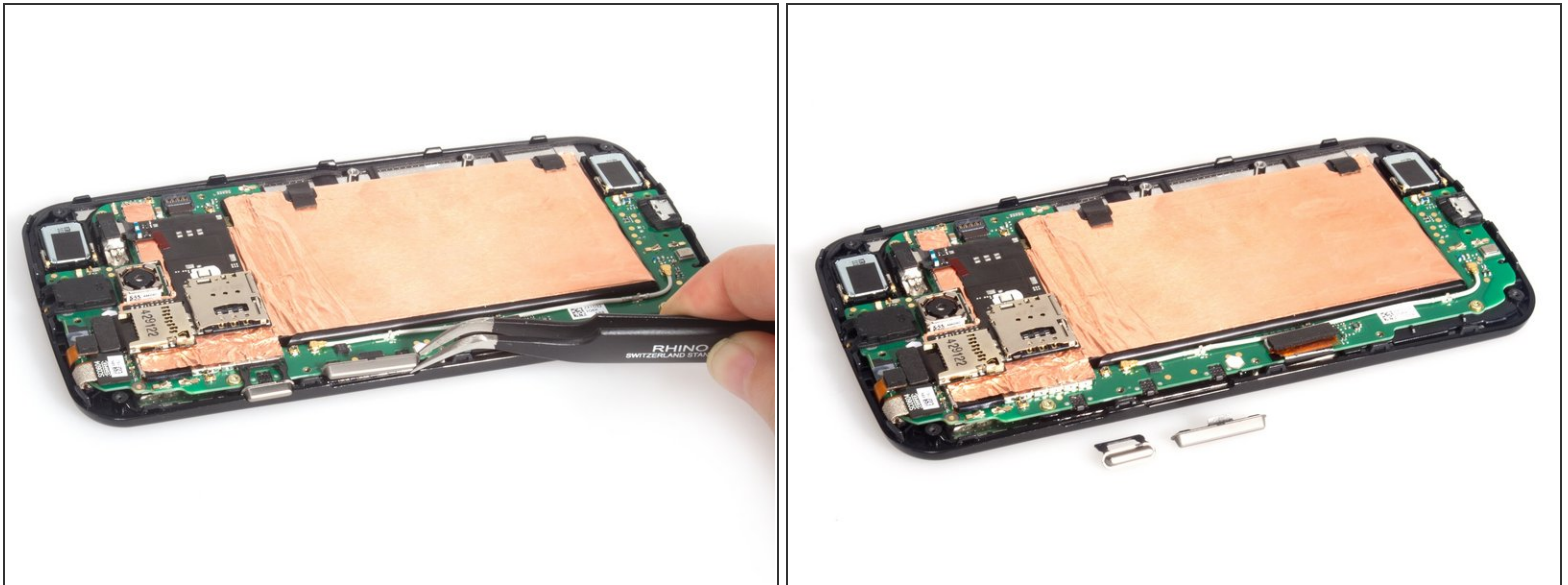
- Remove back cover. It's easy, no adhesive and no screws.

Step 2



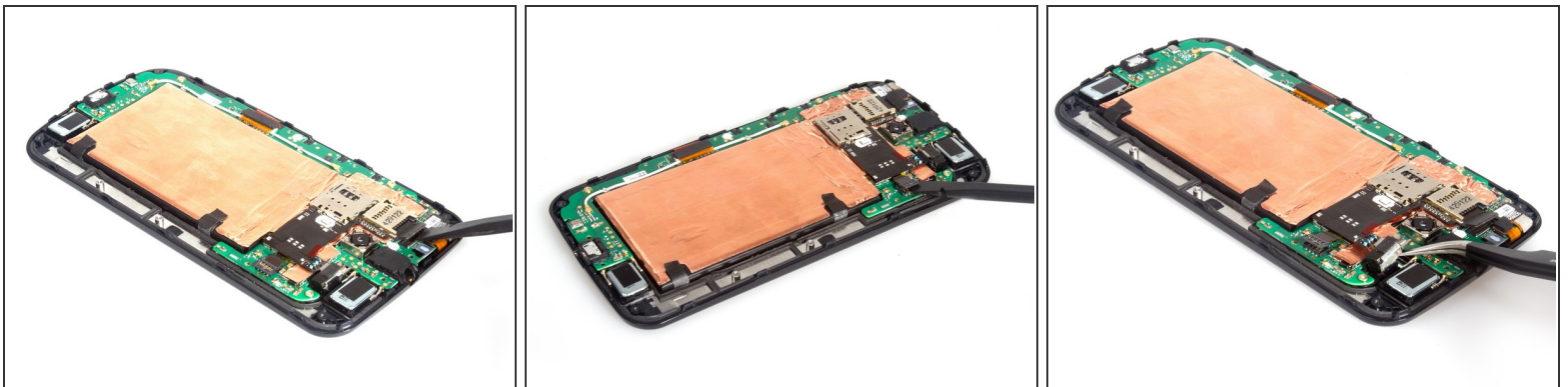
- Twist off all 14 screws together and remove the back frame easily. But the screws feature different lengths, you'd better remember their positions.

Step 3



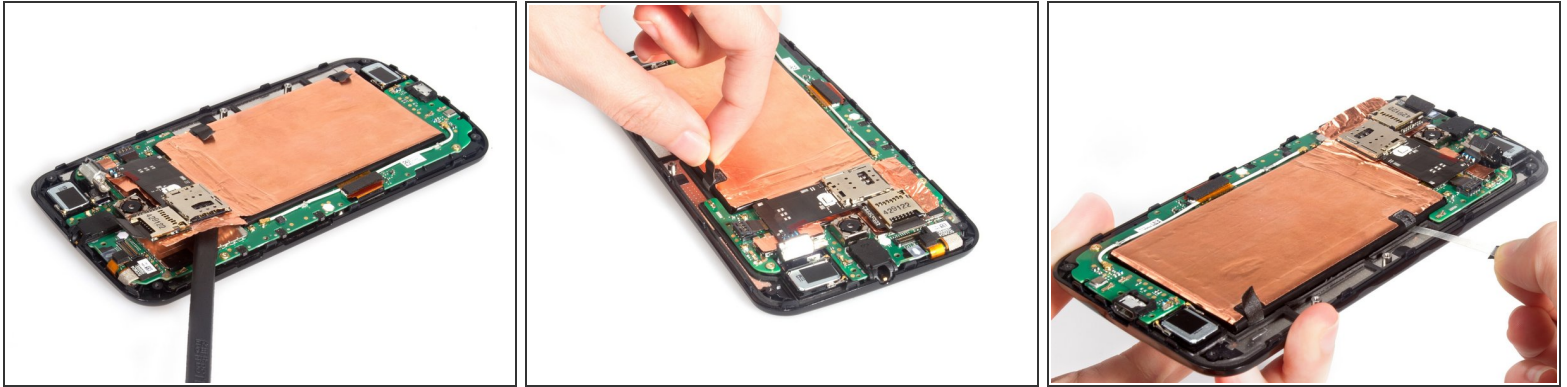
- Take away the volume button and power button.

Step 4



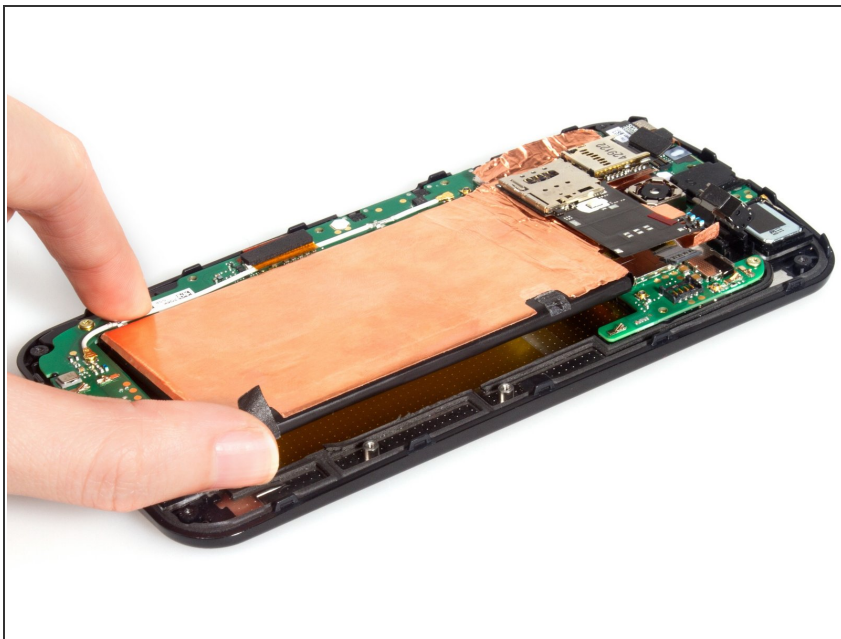
- Release SIM&SD card reader connector and battery connector. And get the vibrator motor free from adhesive.

Step 5



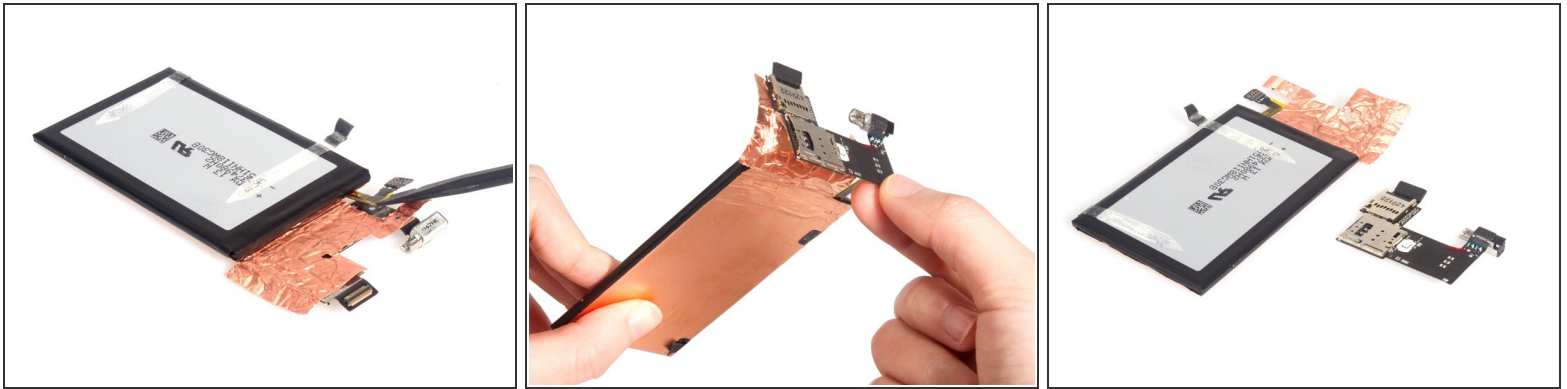
- Loosen the platinum foil under SIM & SD card reader from plate. And then drag the stickers out which fix the battery.

Step 6



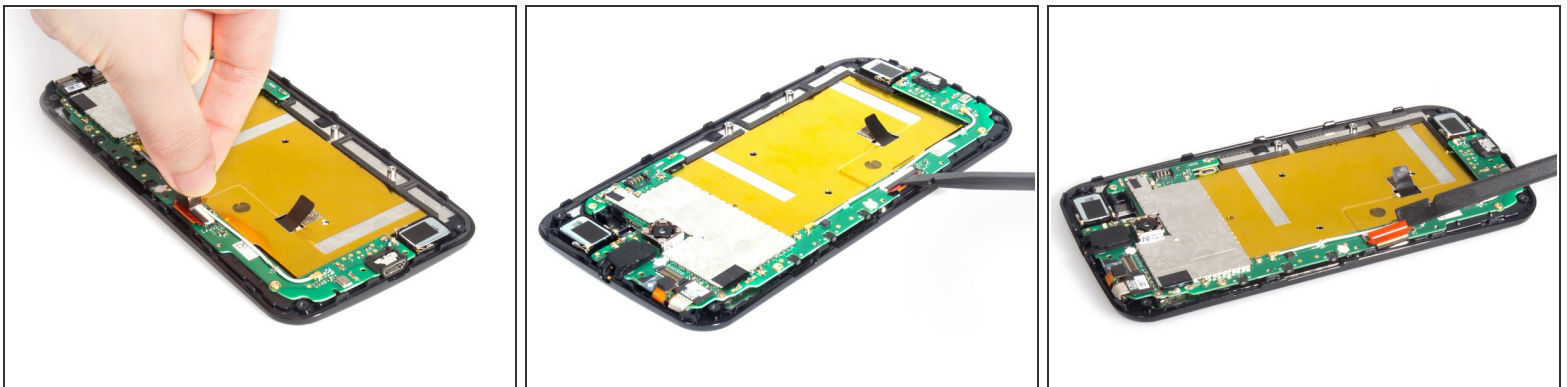
- At that time, remove the battery with SIM & SD card reader assembly together.

Step 7



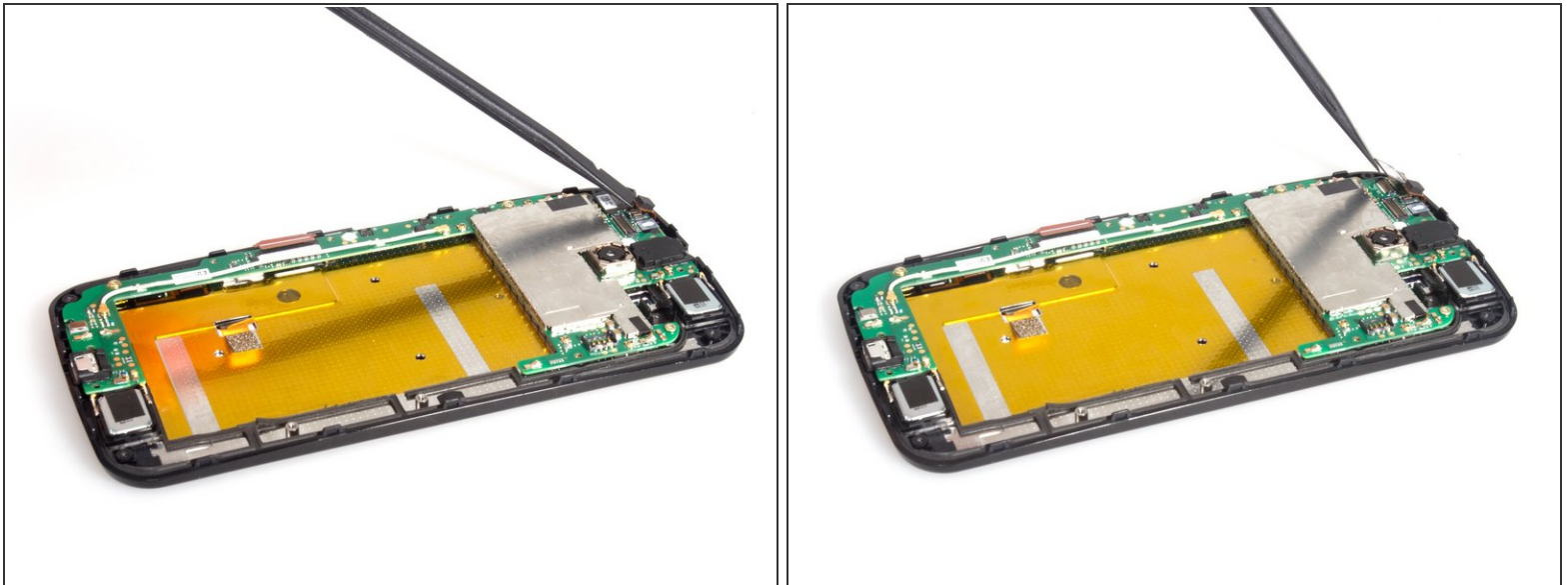
- Separate battery and SIM & SD card reader assembly.

Step 8



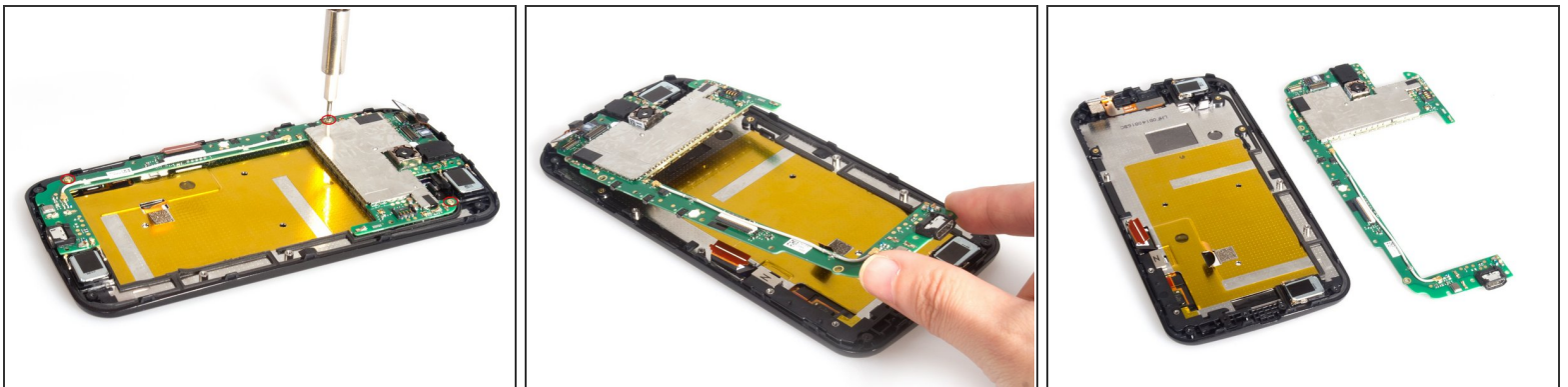
- Release LCD screen connector from motherboard.

Step 9



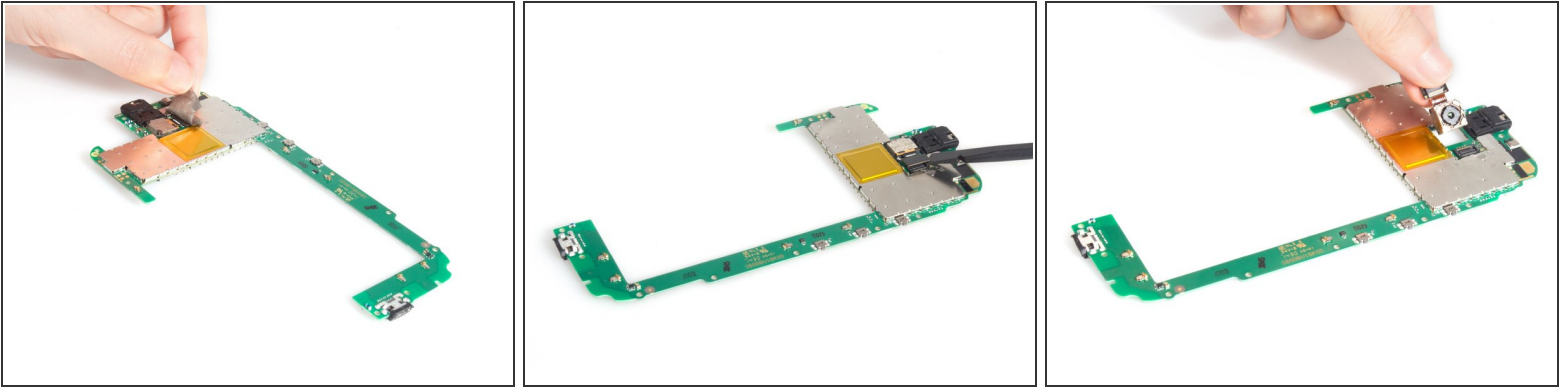
- Release sensor flex connector and front camera connector respectively.

Step 10



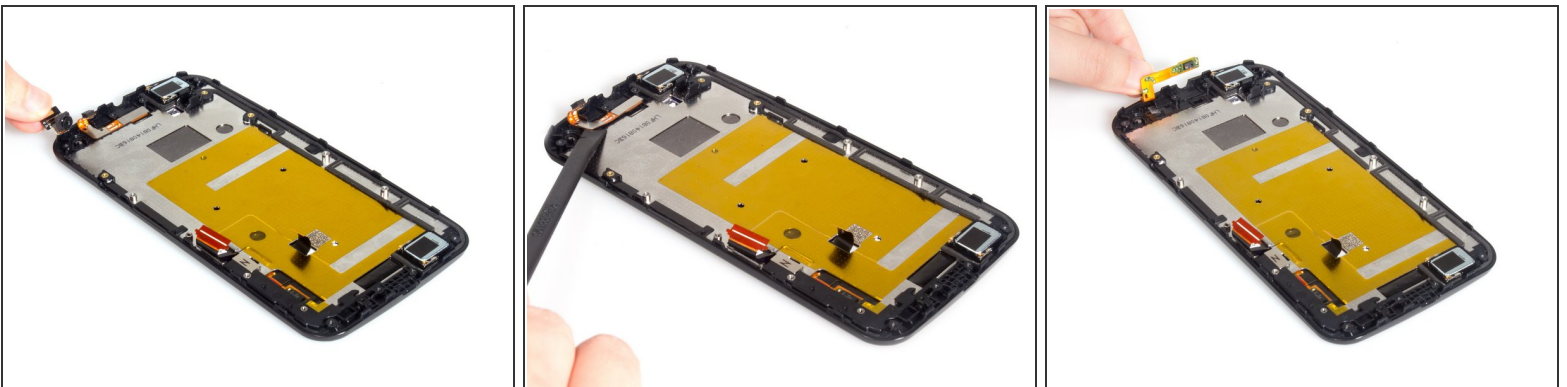
- Remove screws on the motherboard and the motherboard can be removed easily.

Step 11



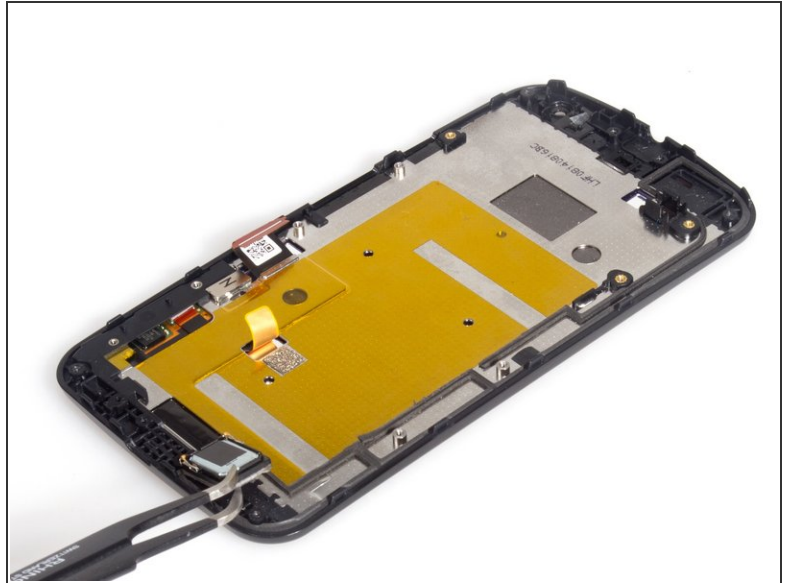
- Remove rear camera.

Step 12



- Remove front camera and sensor cable.

Step 13



- Remove earpiece and loudspeaker.

Step 14



- Done.

To reassemble your device, follow these instructions in reverse order.