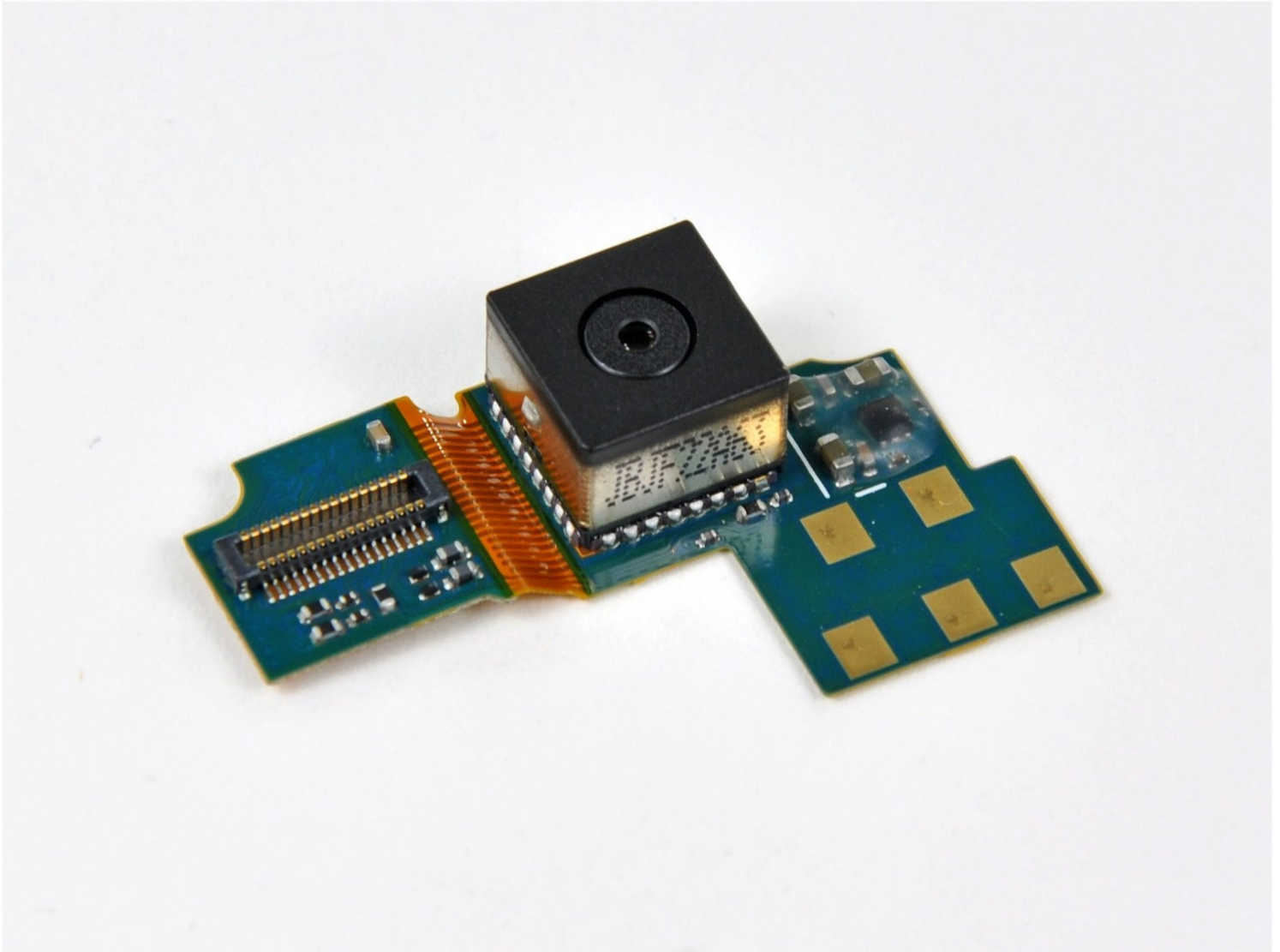




Motorola Droid 2 Camera Assembly Replacement

Use this guide to replace your Droid 2's camera...

Written By: Andrew Bookholt



INTRODUCTION

Use this guide to replace your Droid 2's camera assembly.

TOOLS:

Spudger (1)

T5 Torx Screwdriver (1)

Step 1 — Battery



- Slide the battery cover toward the bottom edge of the phone.
- Remove the battery cover from the rear of the phone.

Step 2



- Lift the battery out of the Droid 2 from the edge closest to the bottom of the phone.
- Remove the battery from the Droid 2.

Step 3 — Rear Case



- Using the tip of a spudger, peel up one corner of the silver ribbon below the battery compartment.
- Peel the ribbon off the phone.

Step 4



- Insert the flat end of a spudger and pry the plastic camera cover up off the phone.

⚠ The thin plastic cover is attached to the phone with an adhesive. Work slowly and carefully.

Step 5



- Use the tip of a spudger to remove the camera bezel stuck to the rear case.

Step 6



- Remove the seven 5.5 mm T5 Torx screws securing the rear case to the inner case.

Step 7



- Insert the flat end of a spudger and pry downwards to release the plastic tab holding the rear case to the motherboard screw.

Step 8



- Gently insert a spudger between the rear case and front case at the top of the phone, near the audio jack.
- Carefully pry the top edge of the rear case up from the rest of the phone.

Step 9



- With the spudger still inserted between the rear case and front case, slide the spudger along the right edge of the device, moving toward the bottom, prying as you go.
- Continue prying along the bottom edge of the device from right to left, freeing it from the front panel.

Step 10



- Continue prying the rear case from the front case along the left side, moving from bottom to top.
- Lift the rear case up out of the phone.

⚠ At this point, the button covers on the side of the phone are free and may fall out if you tip the phone upside down.

Step 11 — Speaker



- Carefully lift the speaker/antenna assembly up and out of the phone.
- ✦ If you are re-assembling your phone, insert any power, camera, or volume buttons that may have fallen out at this point.

Step 12 — Motherboard



- Use a spudger to pry the antenna cable connectors from their respective sockets on the motherboard and the speaker/antenna board.
- De-route the antenna cable by pulling it out of the metal clips along the side of the front case.

Step 13



- Peel the black rubber sheet covering the side button and display ribbon connectors on the motherboard.

Step 14



- Disconnect the power button/volume button connector from its socket on the motherboard using the flat end of a spudger.

Step 15



- Disconnect the display ribbon connector from its socket on the motherboard using the flat end of a spudger.

Step 16



- Use the flat end of a spudger to remove the small black plastic piece stuck to the battery connector.

Step 17



- Remove three 3.8 mm T5 Torx screws securing the motherboard to the front case.

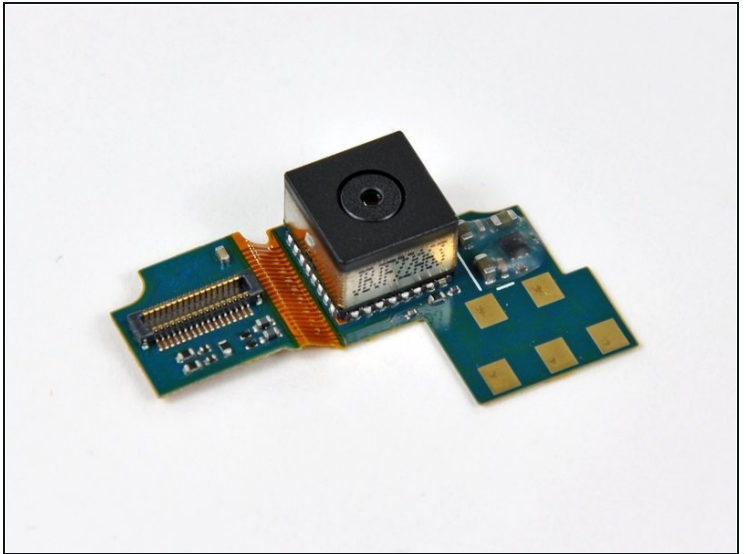
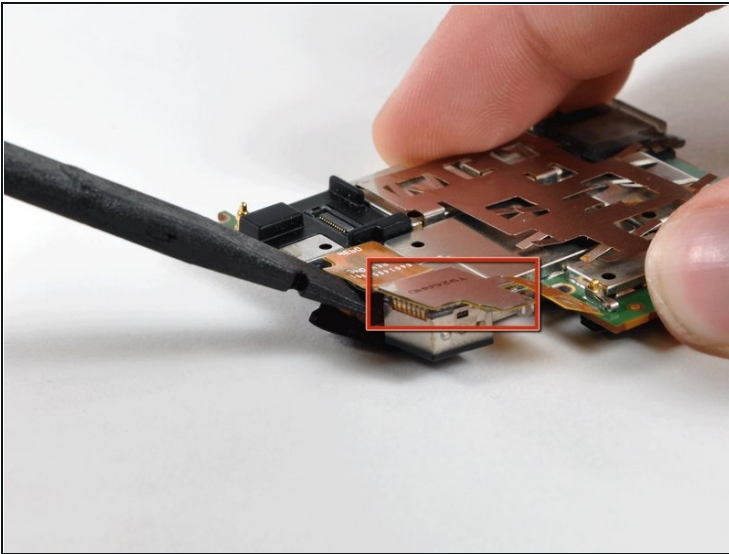
⚠ Don't attempt to remove the motherboard yet, it is still attached by the keypad ribbon connector.

Step 18



- ① Carefully lift the motherboard from the front case and lay it next to the Droid 2, minding the keypad connector that is still attached.
- Disconnect the keypad connector by prying it straight up off its socket on the motherboard.
- Remove the motherboard from the Droid 2.

Step 19 — Camera Assembly



- ① Orient the motherboard so that the camera lens is face down.
- Disconnect the camera connector from its socket by prying it straight up with a spudger.
- Remove the camera assembly from the motherboard.

To reassemble your device, follow these instructions in reverse order.