



Power Mac G4 Cube Airport Card Replacement

Installing a new Airport Card.

Written By: Ryan Chun



INTRODUCTION

Installing the Airport Card involves removing the outer case.

Step 1 — Remove Cube Core

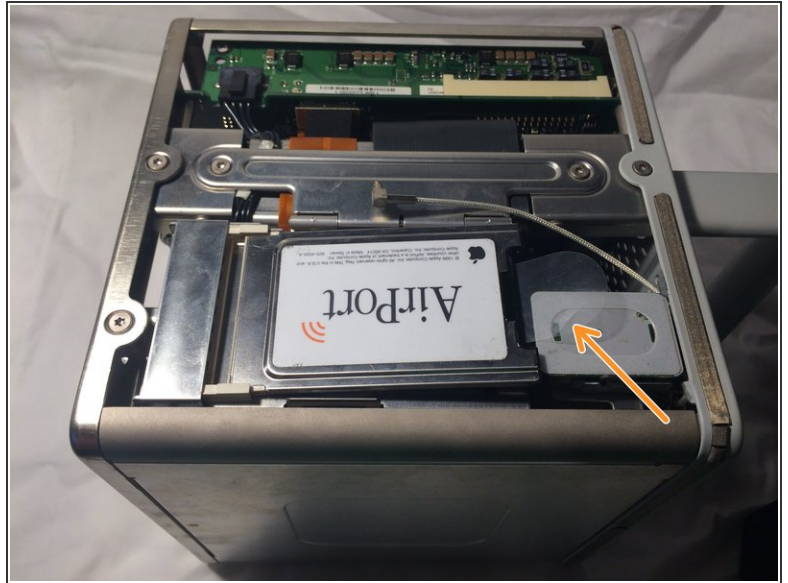


- Release the handle at the bottom of the Power Mac G4 Cube by pushing it down. Slowly pull out the cube by holding the end of the handle.

 **Watch for any parts that may become entangled with the outer case.**

- Push back the handle after you have taken the core out of the case.

Step 2 — Accessing AirPort Card



- Pull outwards on the antenna cable.
 - ⓘ The cable should pop out of the card without much force.
- Pull on the clear tab outwards to remove the existing AirPort card
- Slide in the new AirPort card.
- Reconnect the antenna cable.

To reassemble your device, follow these instructions in reverse order.