



Asus X55C Wi-Fi Half mini PCIe lan card Replacement

Asus X55C Wi-Fi Half mini PCIe card Replacement

Written By: ZFix



INTRODUCTION

How to replace the half mini PCIe Wi-Fi (Wireless) Lan Card.

[Please SUBSCRIBE to my channel ツ](#)

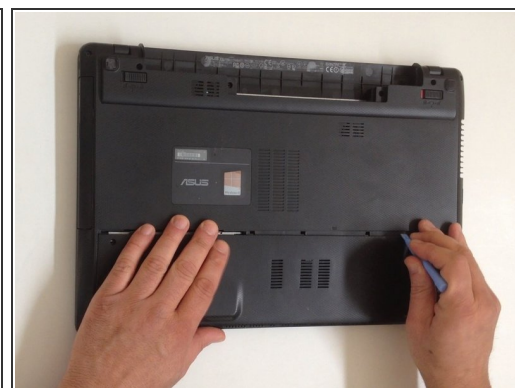
[video: <http://youtu.be/zRjcZQ59SSY>]



TOOLS:

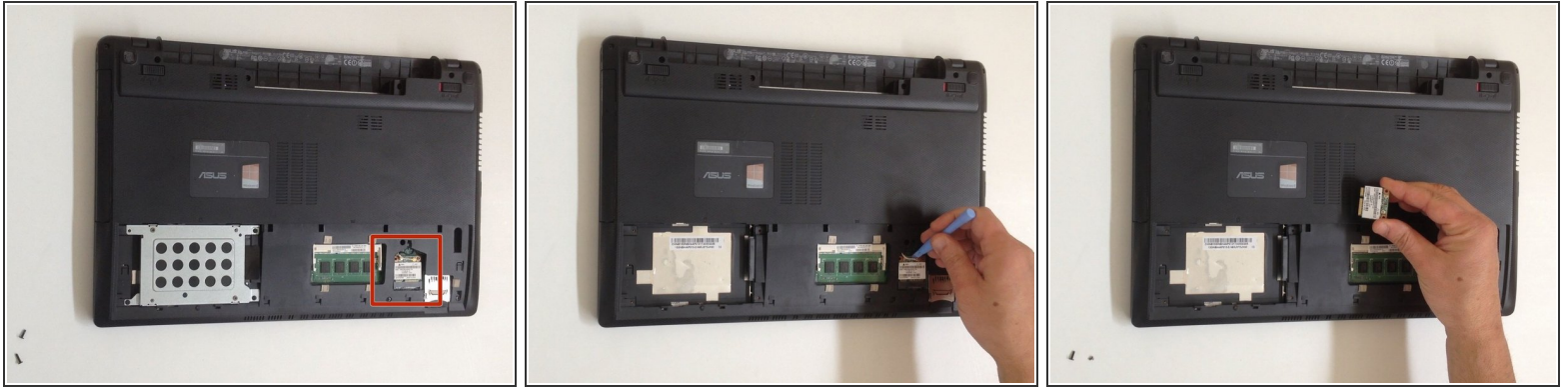
- [Phillips #0 Screwdriver](#) (1)
-

Step 1 — HDD / RAM Cover



- Switch off the Laptop and remove the Battery.
- Remove two screws securing the HDD / RAM (service) cover.
- Remove the cover.

Step 2 — Wi-Fi Half mini PCIe lan card



- The Wireless card is held by one small Philips screw. Remove it.
- Disconnect the two coaxial cables (Wi-Fi and Bluetooth).
- Remove the Wireless Lan card.
- This is: Half Mini PCIe Wi-Fi card.
- .
- **Did you do it successfully.**



[Please SUBSCRIBE to my channel ツ](#)

To reassemble your device, follow these instructions in reverse order.