



# Disassembling Polaroid a520 Lens

Written By: Dani





## TOOLS:

- [Phillips #00 Screwdriver](#) (1)
  - [Spudger](#) (1)
-

## Step 1 — Battery



- Place your thumb on the battery cover and push left towards the arrow.

**i** The cover will release and pop open.

## Step 2



- Remove the batteries from the camera.



## Step 3 — Casing



- Remove four 3 mm screws on the right side of the camera using a Phillips #1 screwdriver.

ⓘ This will release the front and back casings.

## Step 4



- Use your nail or a flat object to pry up the edge of the front casing. Push the casing up and back.

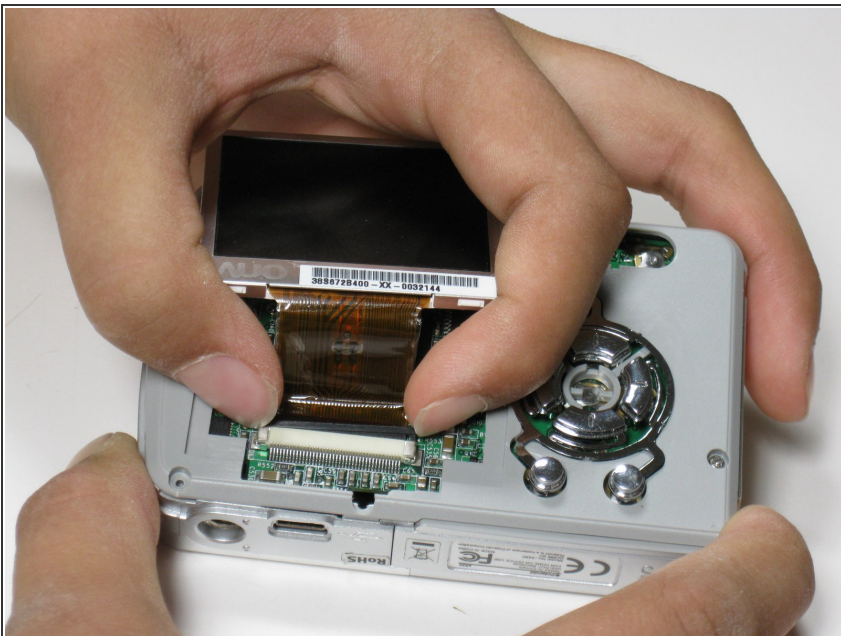
ⓘ Repeat this step for the back casing.

## Step 5 — LCD Screen



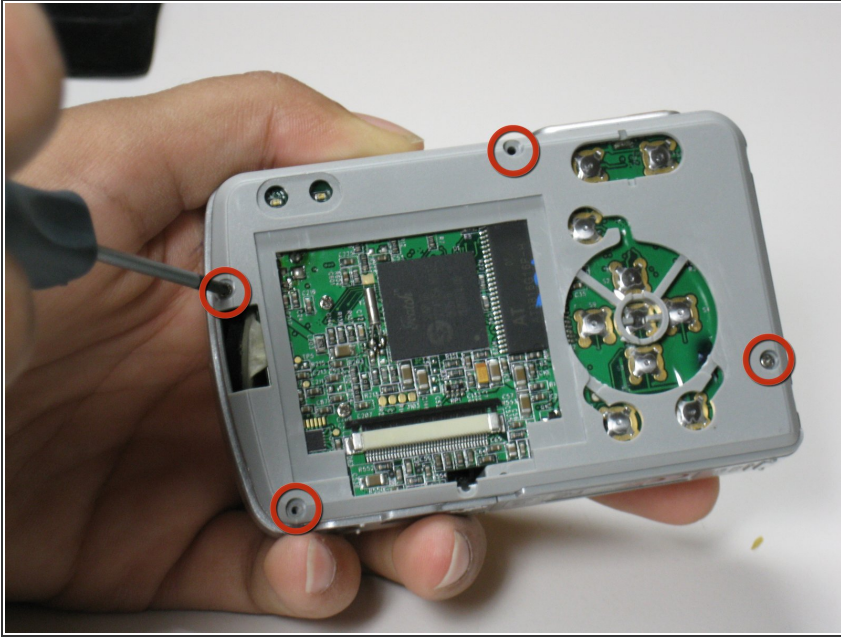
- Under the screen, locate the black plastic strip that sits above the white plastic strip.

## Step 6



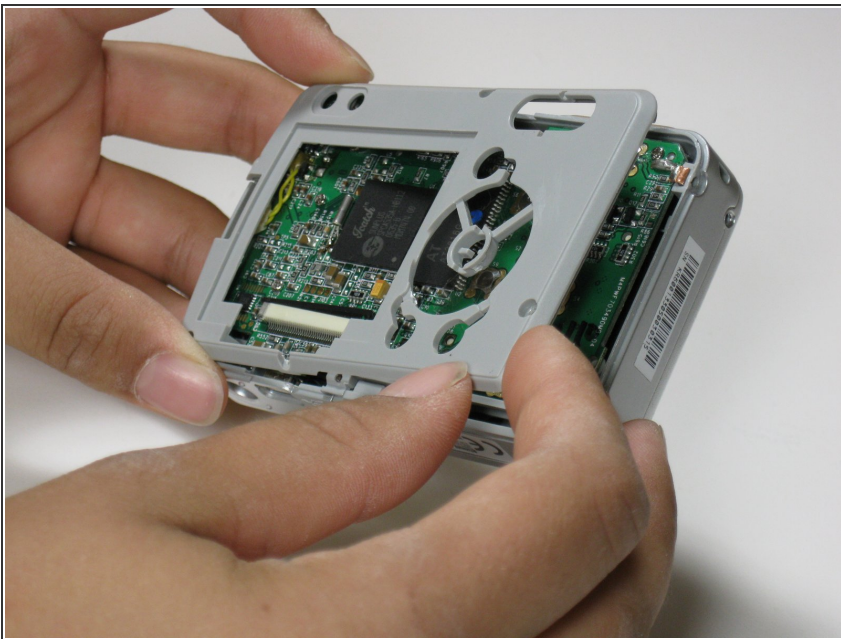
- Pull both sides of the black piece upward-about a mm.
- ⚠ The black plastic piece is not meant to come all the way off, just enough to release the screen.
- Once the piece is lifted carefully slide the screen out of the slot.

## Step 7 — Logic Board



- Unscrew and remove the four (6 mm) screws on the inside casing.

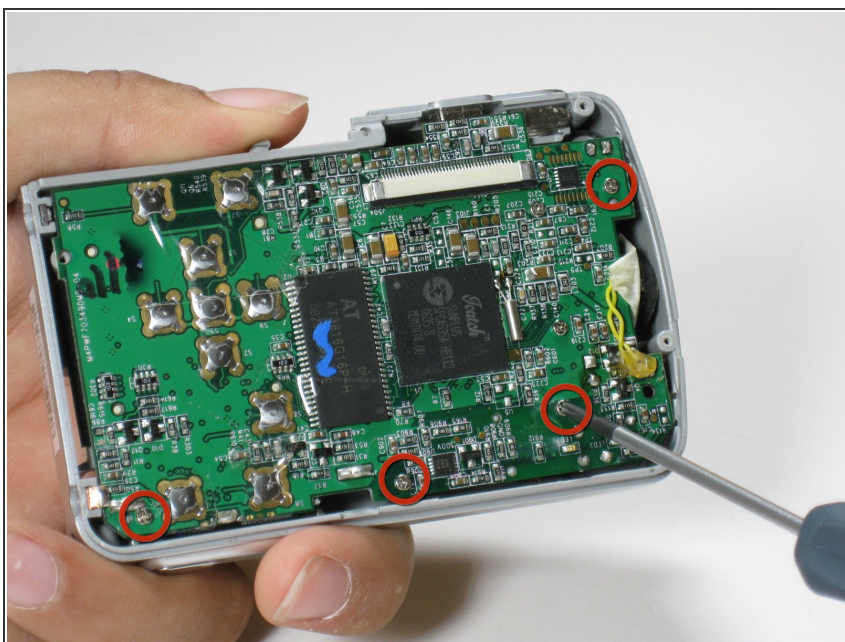
## Step 8



- Pull the inner casing off of the camera.

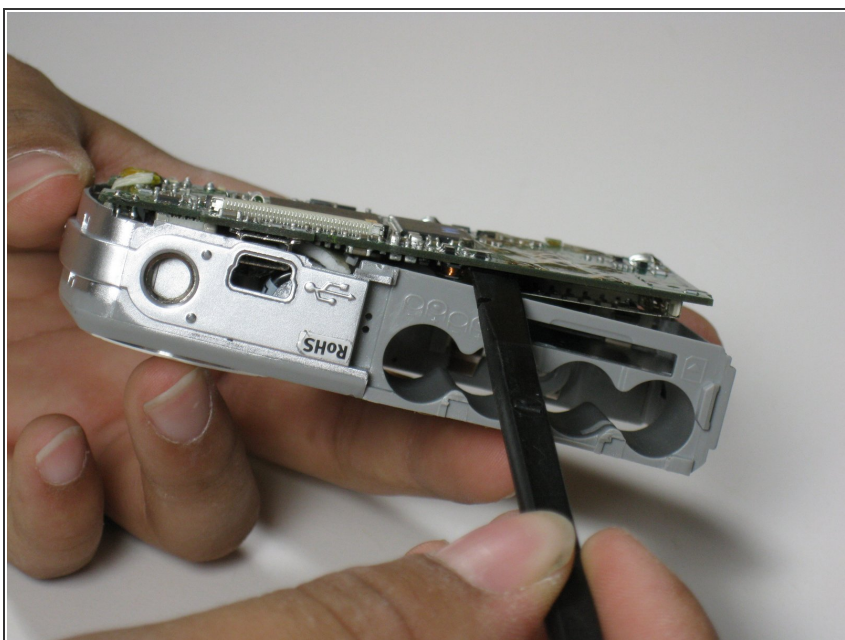


## Step 9



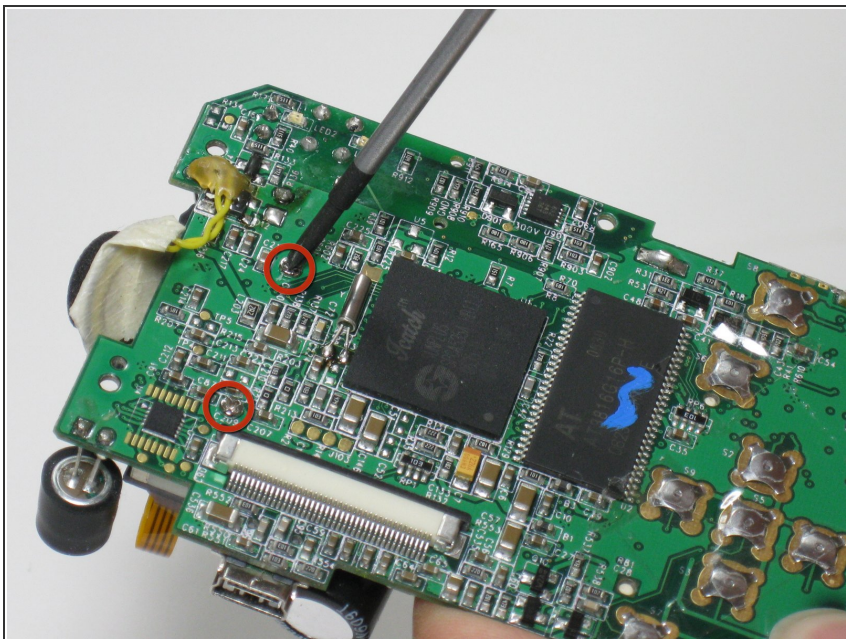
- Unscrew and remove the four (4mm) screws from the logic board.

## Step 10



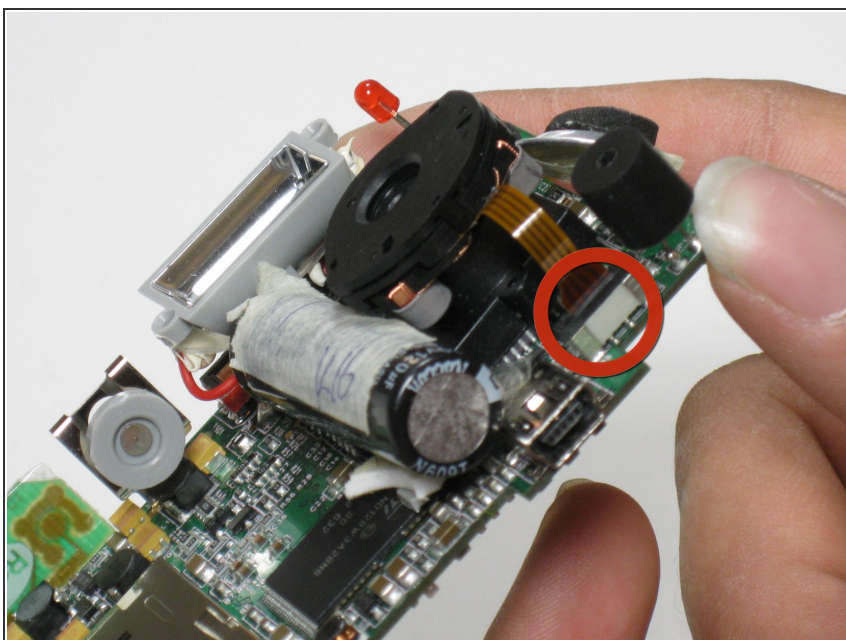
- Use a spudger to pry up all four sides of the logic board and slide it out of the camera.

## Step 11 — Lens



- Unscrew and remove the two (5mm) screws from the logic board to the far left.

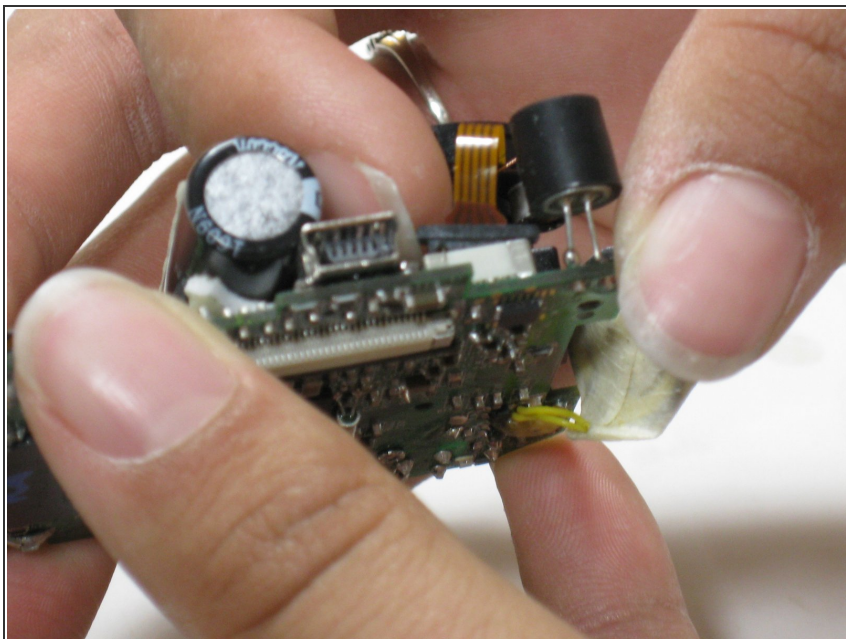
## Step 12



- Locate the black plastic piece behind the lens.



## Step 13



- Similar to the LCD screen, pull the black piece up about a mm and it will release the lens.
- ⚠ The piece will not come all the way off; only enough to release the lens.
- Once the black piece is lifted slide the ribbon out to release the lens.

To reassemble your device, follow these instructions in reverse order.