



Huawei Ascend W1 Speaker Replacement

Broken speaker? Use this guide to help you remove and replace the speaker in your device.

Written By: Jaie Hillery





TOOLS:

- [Tweezers](#) (1)
-

Step 1 — The phone's orientation.



- Flip the device over so that the back of the phone is facing you and the screen is against your palm.

Step 2 — Removing the back cover.



- Locate the slit at the bottom of the back cover.
- Using your fingernail, lift up on the back cover to expose the battery.

Step 3



- Lift the back cover off the phone.
- ⓘ The back cover is snapped onto the phone so you will feel it unsnapping as you remove it.

Step 4 — Removing the battery.



- Find the indented notch at the base of the battery.
- Lift the battery out of the phone with your fingers by pressing forward and lifting upward.

Step 5 — Remove all the screws



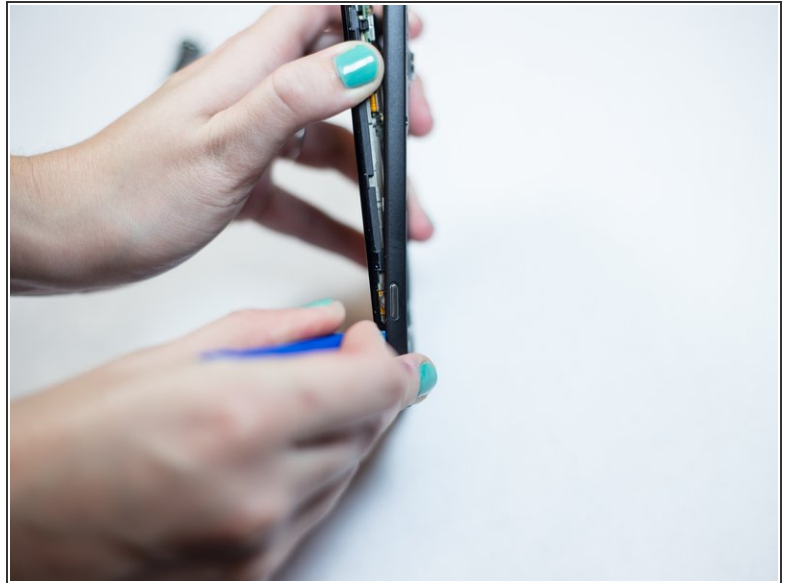
- After removing the battery, you will need to remove the screws holding the phone's middle cover.
- There are eleven screws that hold the plate to the rest of the phone.
- The screw that is marked by the orange circle is covered by a white dot. It is used as a tampering deterrent.

Step 6 — Removing the lower circuit plate



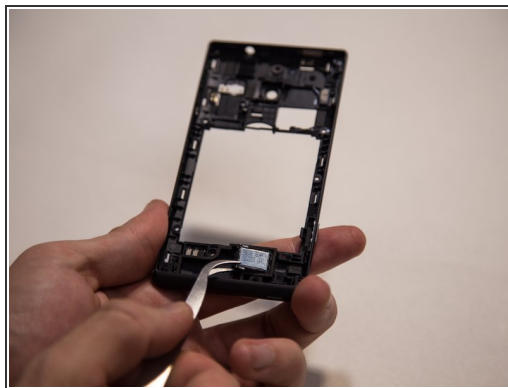
- After all the screws are removed from the back circuit, use your fingers to remove the lower section of the middle cover.
- Grab the top of the lower middle cover and pull it outward towards you, exposing the circuit board underneath.

Step 7 — Removing the rest of the middle cover.



- Begin working your way around the sides of the middle cover, unsnapping it gently.
- ⓘ Be gentle as you pry the middle cover off. The parts may break if you are too forceful.

Step 8 — Removing the speaker



- The speaker is attached to the inside of the back cover and visible once the middle cover is removed.
- *Using small pliers, gently remove the speaker.*
- ⓘ The speaker may be difficult to remove due to the adhesive that keeps it in place.

To reassemble your device, follow these instructions in reverse order.