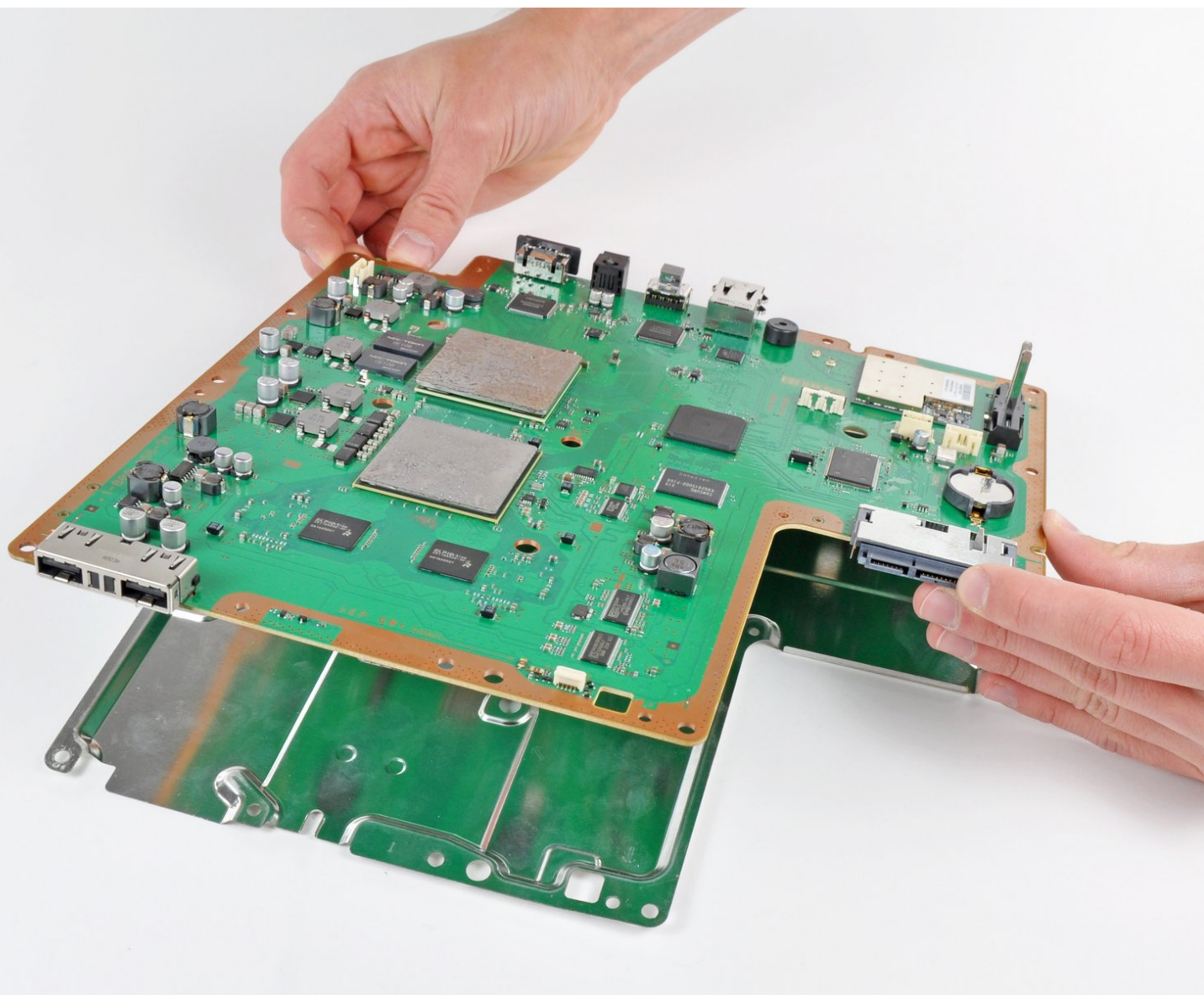




PlayStation 3 Slim Motherboard Replacement

Replace your PlayStation 3 Slim's fried motherboard.

Written By: Andrew Bookholt



INTRODUCTION

Use this guide to completely replace your motherboard. Before reattaching the heat sink, be sure to apply a new layer of thermal paste.



TOOLS:

- [Arctic Silver ArctiClean](#) (1)
- [Arctic Silver Thermal Paste](#) (1)
- [Metal Spudger](#) (1)
- [Phillips #1 Screwdriver](#) (1)
- [Spudger](#) (1)
- [T8 Torx Security Bit Screwdriver](#) (1)



PARTS:

- [Sony PlayStation 3 Slim Processor Clamps](#) (1)

Step 1 — Top Cover



- Turn the PS3 over and lay it on its backside.
- Carefully peel the warranty sticker up off the lower case to reveal a hidden screw cover.
- ☑ To avoid activating the **VOID** that may come up, heat the sticker carefully to remove and replace it cleanly.

Step 2



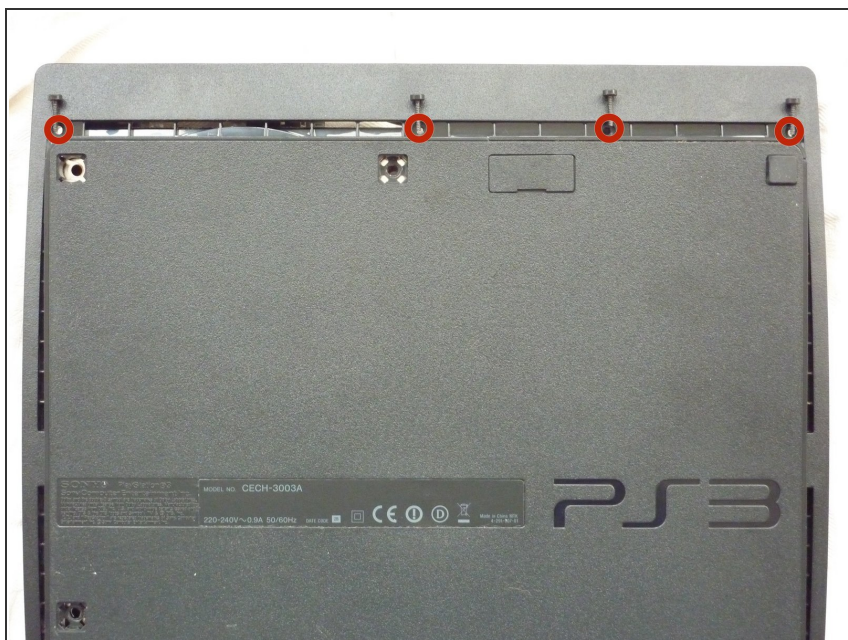
- Use the flat end of a metal spudger to pry up the seven screw covers around the edge of the lower case.

Step 3



- Remove the seven 37 mm Phillips screws securing the top cover to the lower case.

Step 4



- Remove the four 13.3 mm T8 security Torx screws beneath the Blu-ray drive opening. (Some models may only have three screws)

Step 5



- Lift the top cover from its rear edge and rotate it toward the front of the PS3.
- Lift the top cover off the PS3.

Step 6 — Power Supply



- Squeeze the AC inlet connector's locking mechanism and pull straight up to disconnect it from the power supply.

Step 7



- Pull the DC-Out cables straight up to lift their connector up and out of its socket on the power supply.

Step 8



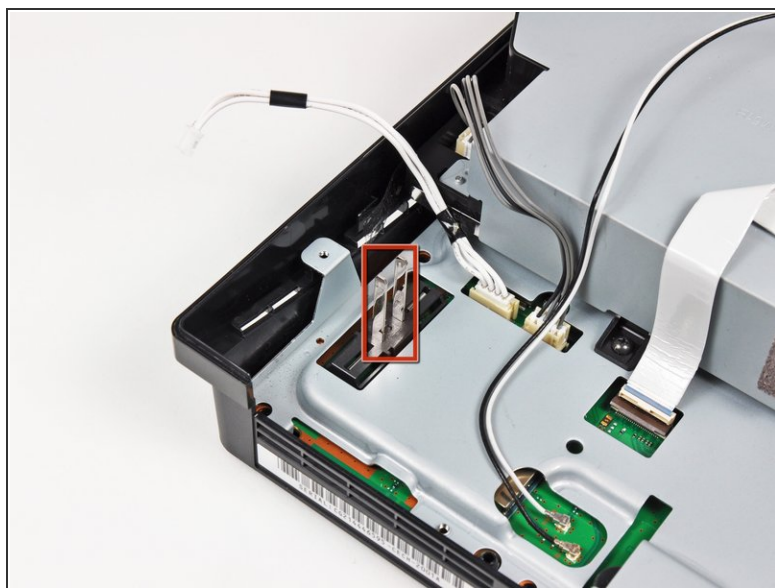
- Remove the two 7.6 mm Phillips screws securing the power supply to the lower case.

Step 9



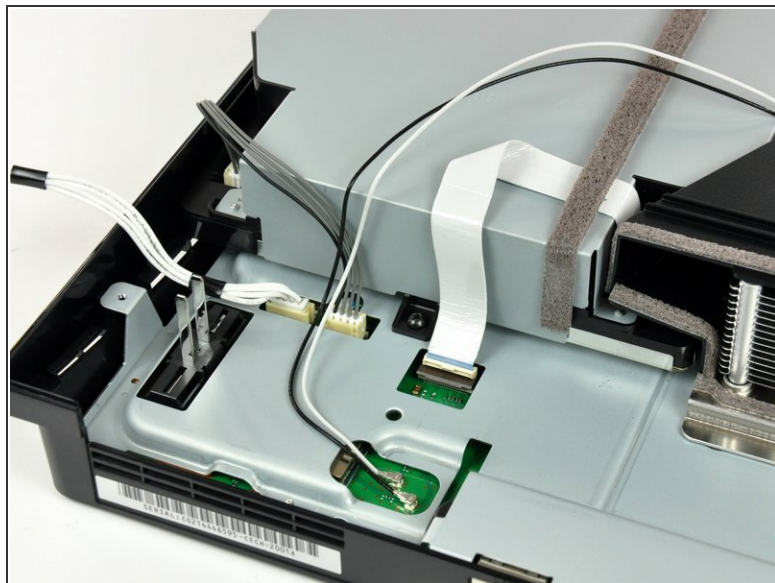
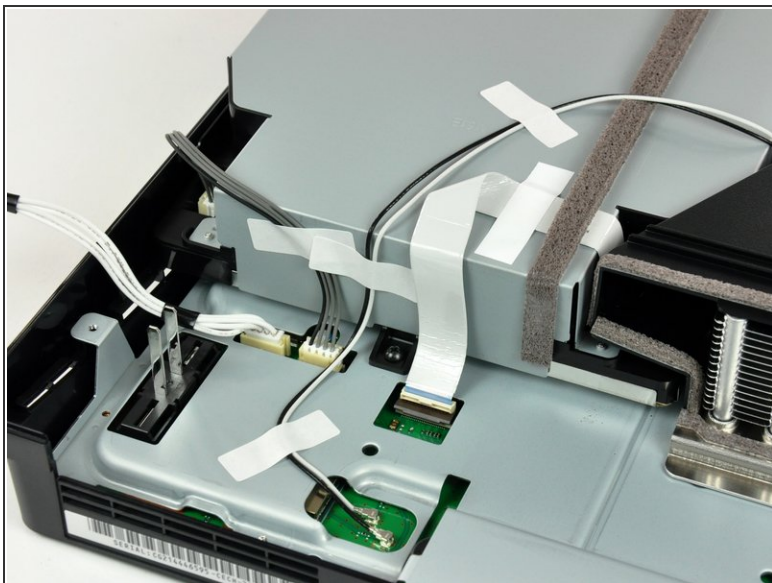
- Lift the power supply upward from its left edge as viewed from the front of the PS3.

Step 10



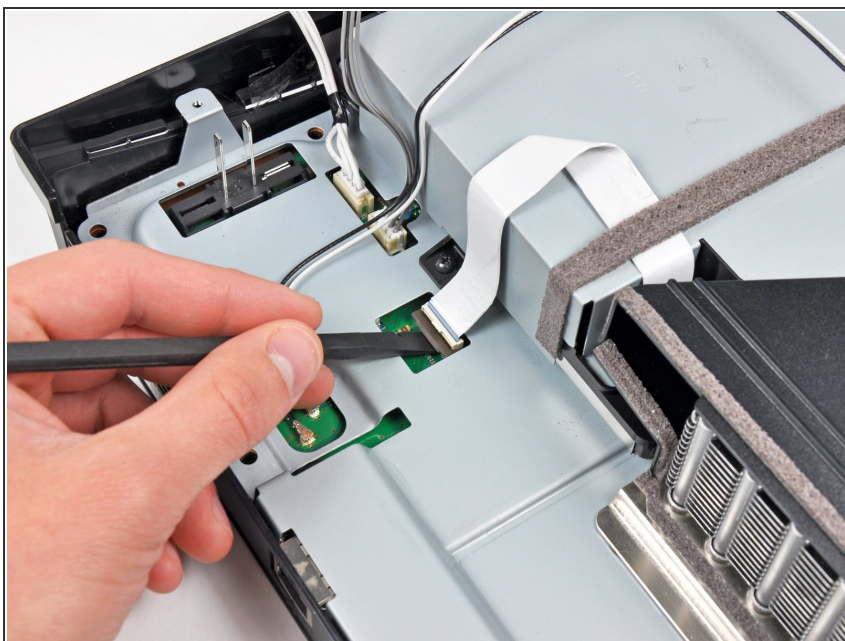
- Continue to lift the left edge of the power supply until it lifts off the two metal posts shown in the second picture.
- Remove the power supply from the PS3, minding any cables that may get caught.

Step 11 — Blu-ray Disc Drive



- ⓘ If present, remove the pieces of tape securing the cables to the body of the Blu-ray drive.

Step 12



- Use the flat end of a spudger or your fingernail to flip up the retaining flap on the Blu-ray ribbon cable socket.
- ⚠ Be sure you are prying up on the movable retaining flap, **not** the socket itself.

Step 13



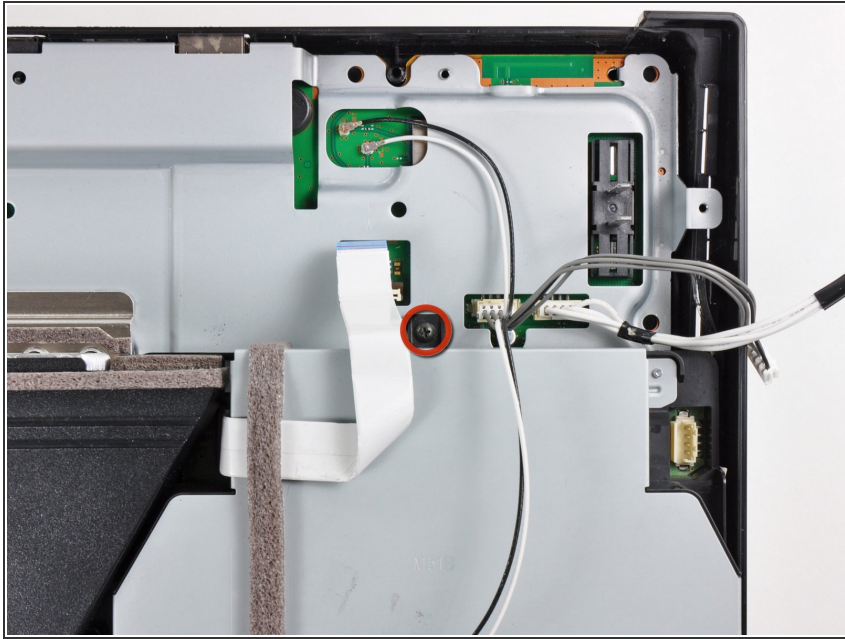
- Pull the Blu-ray ribbon cable straight up and out of its socket.

Step 14



- Pull the Blu-ray power cable straight up to lift its connector out of the socket on the Blu-ray drive.

Step 15





- Remove the single 9.5 mm Phillips screw securing the Blu-ray drive to the lower case.

Step 16

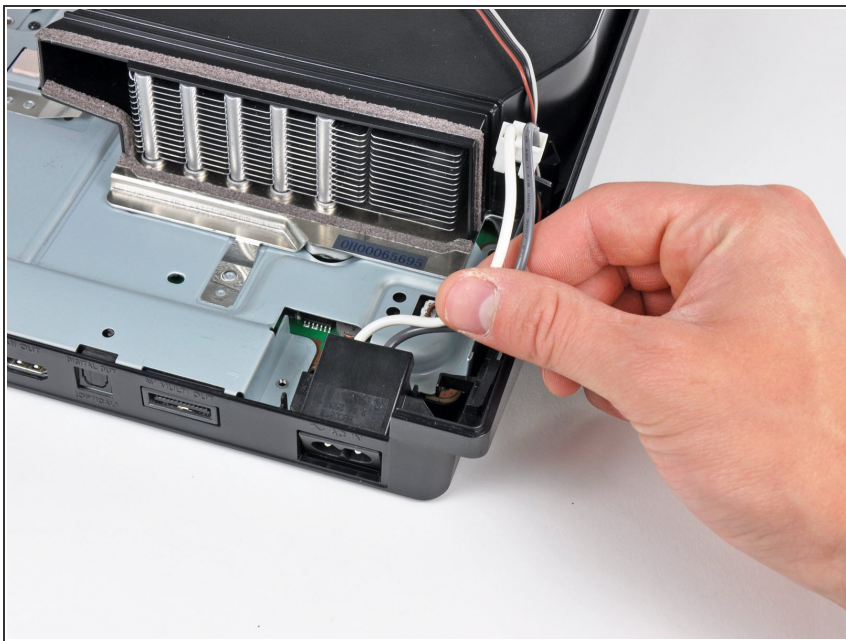


- Lift the Blu-ray drive slightly by its right edge to dislodge the control board from its housing.
- Remove the Blu-ray drive from the PS3.

 After you reinstall the Blu-ray drive, be sure the control board is firmly seated in the lower case before proceeding.

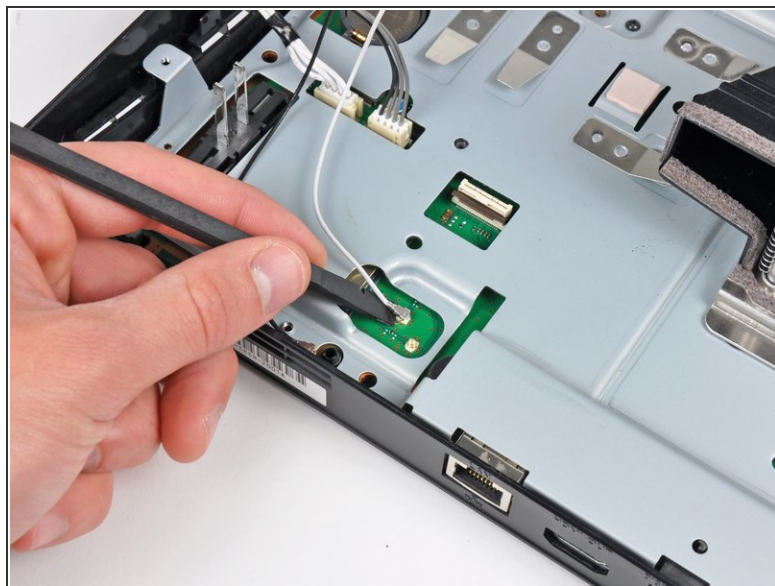
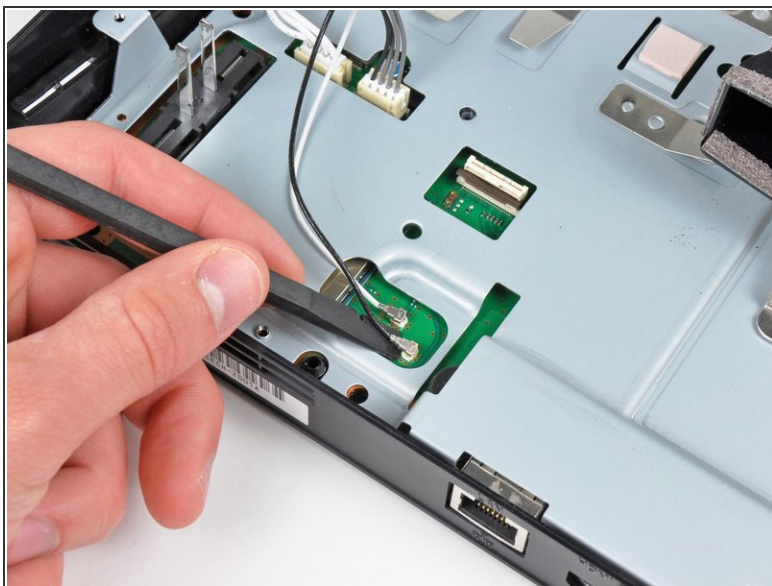
 If replacing the Blu-ray drive with a new drive, [swap the circuit board from your old drive into the new drive.](#)

Step 17 — Motherboard Assembly



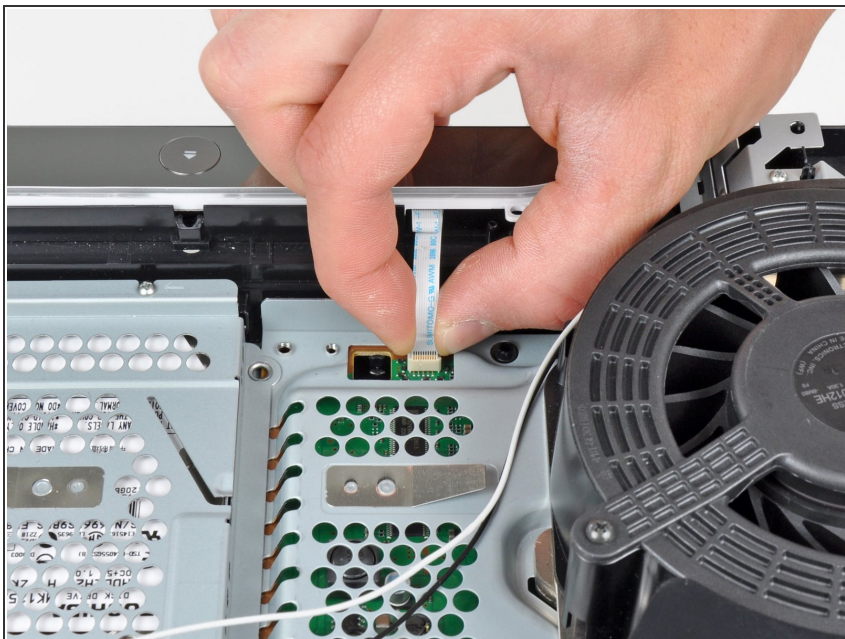
- Pull the AC-In cables upward to remove the AC inlet from the lower case.

Step 18



- Use the flat end of a spudger to pry both antenna connectors up from their sockets on the motherboard.

Step 19



- Pull the control board ribbon cable up and out of its socket on the motherboard.
- Remove the control board.

Step 20



- Turn the PS3 over and lay it on its backside.
- Use the flat edge of a metal spudger to pop up the small access door on the bottom cover near the front of the PS3.
- Remove the blue Phillips screw hidden under the access door.

Step 21



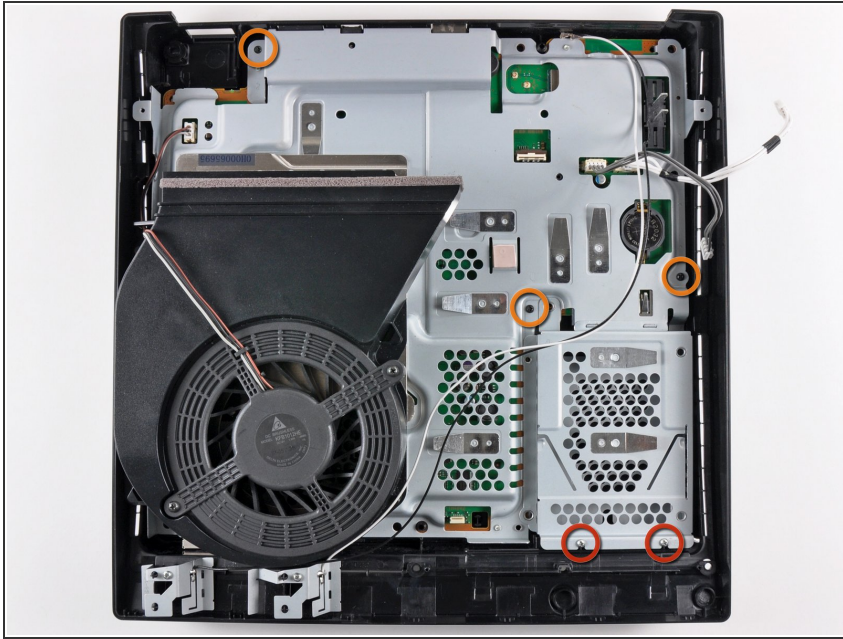
- Slide the hard drive bay cover toward the right side of the lower case, then pull it away from the front edge to remove it from the PS3.

Step 22



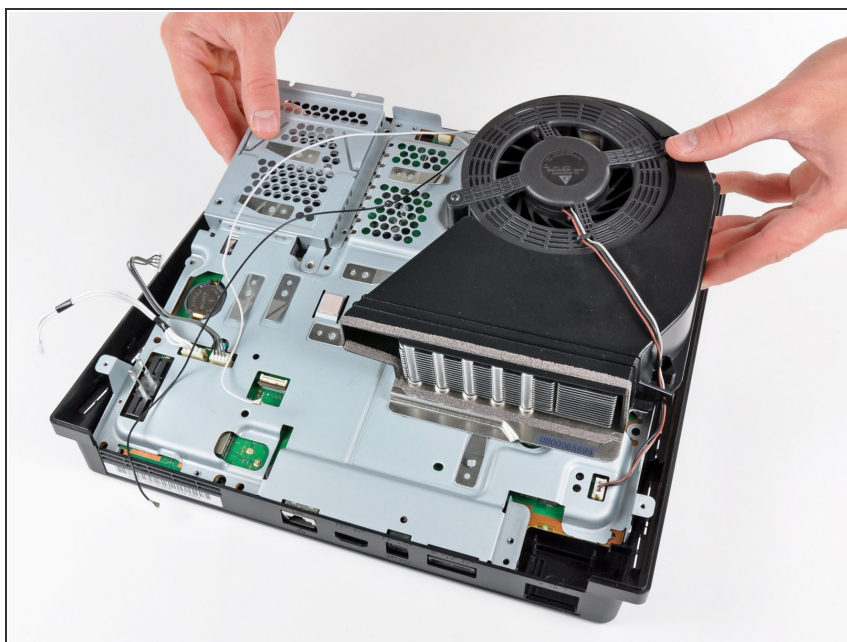
- Using its attached metal handle, pull the hard drive out of its bay.

Step 23



- Remove the following five screws securing the motherboard assembly to the lower case:
 - Two silver 6 mm Phillips
 - Three black 8 mm Phillips

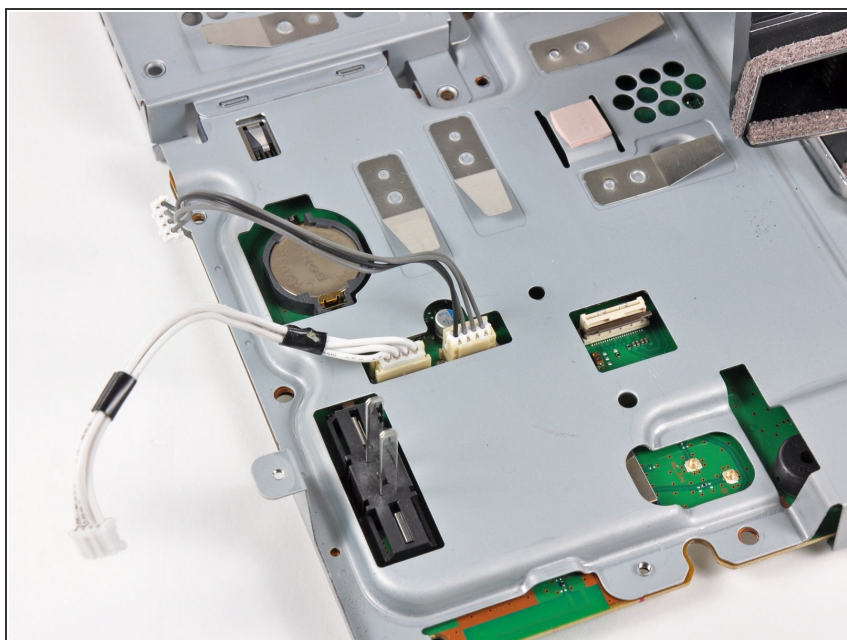
Step 24



- Lift the motherboard assembly from its front edge and remove it from the lower case, minding the antenna cable still attached to the lower case.

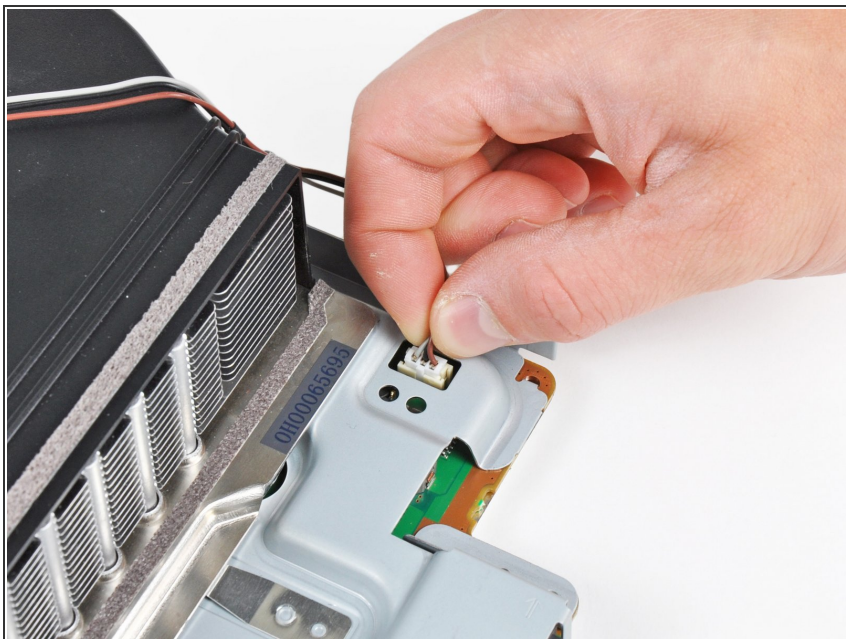
⚠ Be careful not to bend the metal antenna bodies as you lift the motherboard assembly.

Step 25 — Top Shield Assembly



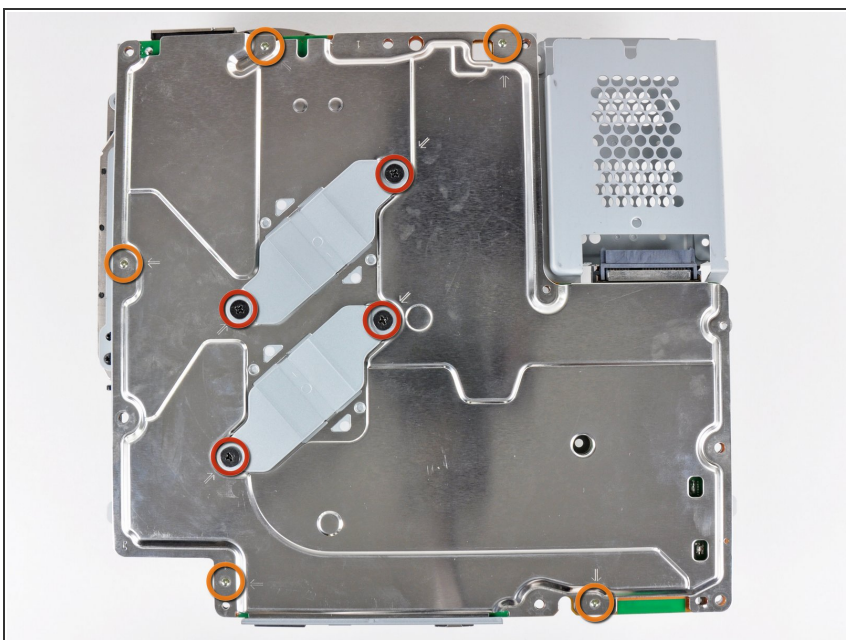
- Disconnect the DC-In and Blu-ray power cables from the motherboard.
- ⓘ Pull the cables straight upward to lift the connectors up and out of their sockets on the motherboard.

Step 26



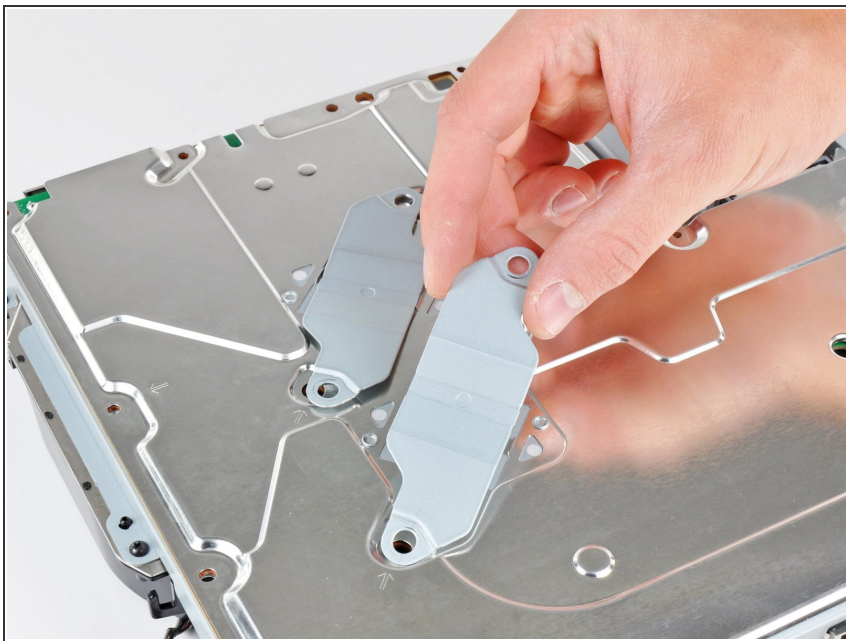
- Pull the fan cables straight up to lift the fan connector up and out of its socket on the motherboard.

Step 27



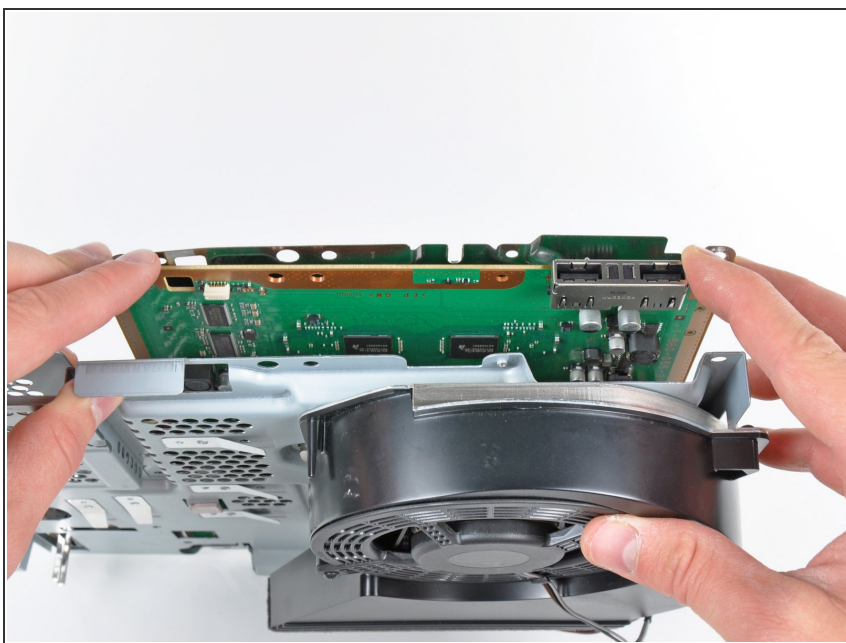
- Remove the following nine screws holding the motherboard assembly together:
 - Four 14.8 mm shouldered Phillips
 - Five 9.5 mm Phillips

Step 28



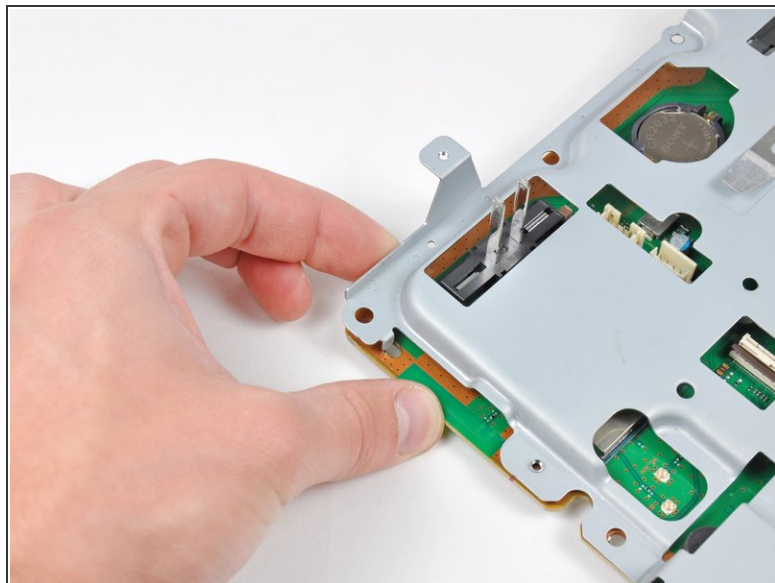
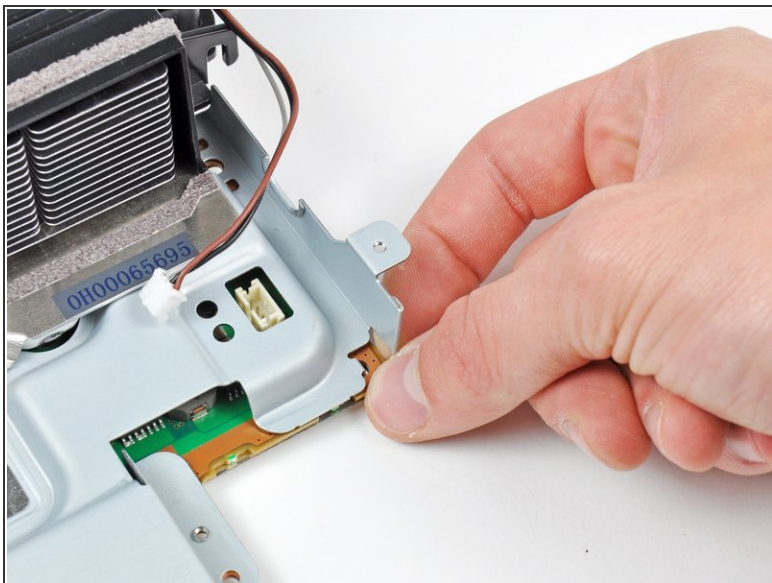
- Remove the two heat sink clamps from the bottom of the motherboard assembly.

Step 29



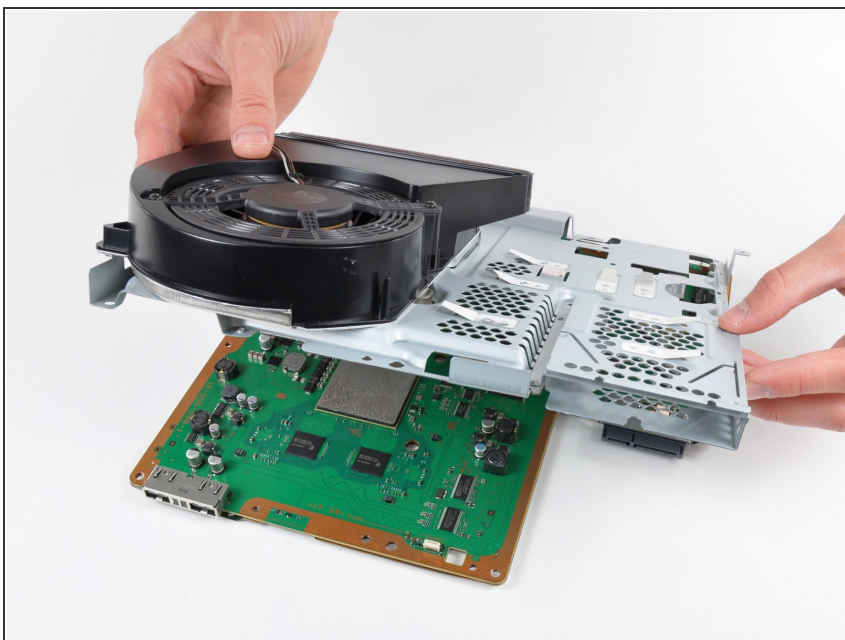
- ⓘ If necessary, gently pry the motherboard off the top shield near the heat sink and its shroud.

Step 30



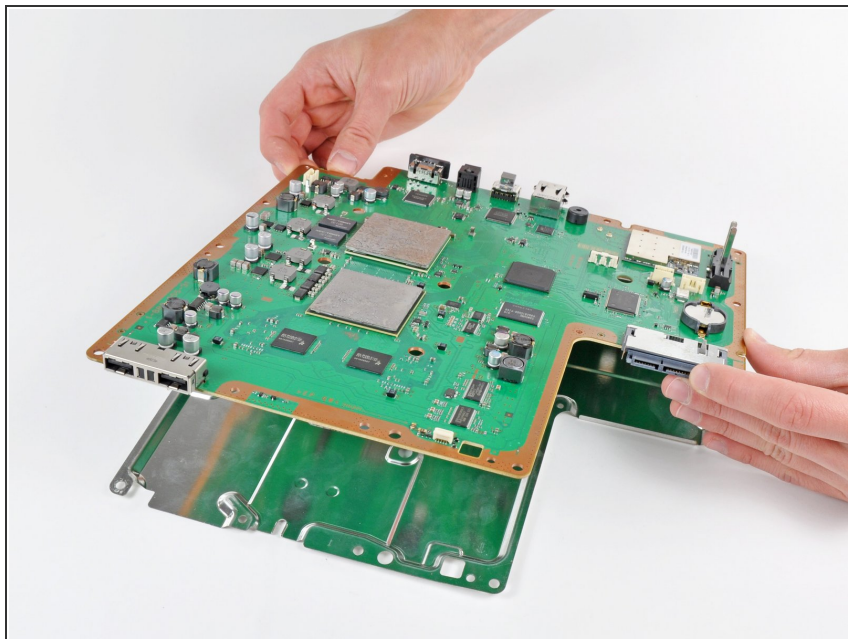
- Gently press the board away from the top shield assembly near the fan connector and the corner of the board near the wireless sockets.

Step 31



- Lift the top shield assembly off the motherboard from its front edge.
- ⚠ Be careful not to damage the sockets as you rotate the top shield assembly away from the motherboard.

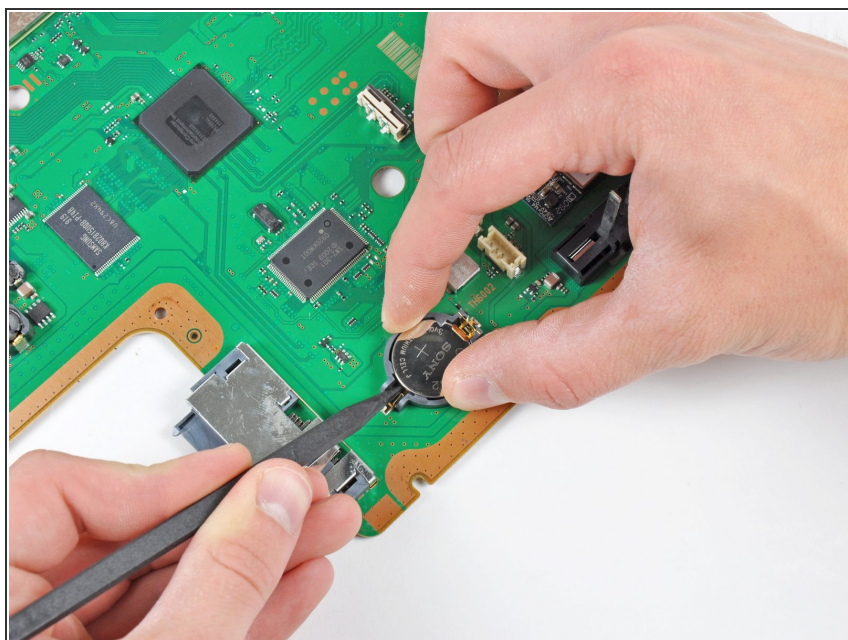
Step 32 — Motherboard



- Carefully lift the motherboard off the bottom shield.

⚠ Handle the motherboard by its edges.

Step 33



- While holding the plastic retainer down against the board, use the tip of a spudger to pry the PRAM battery out of its housing.

⚠ Failure to hold the plastic retainer down during the prying process may result in it tearing off the motherboard.

- ✦ Before installing the heat sink onto the motherboard, it is essential to apply a new layer of thermal paste. [This](#) guide will show you how to do it.

To reassemble your device, follow these instructions in reverse order.

