



Linksys BEFSR41 Teardown

Demo teardown at Maker-Faire 2010

Written By: Ryan McLeod



INTRODUCTION

Demo teardown at Maker-Faire 2010



TOOLS:

- [Phillips #0 Screwdriver](#) (1)
-

Step 1 — Linksys BEFSR41 Teardown



- Top down view of the device.

Step 2



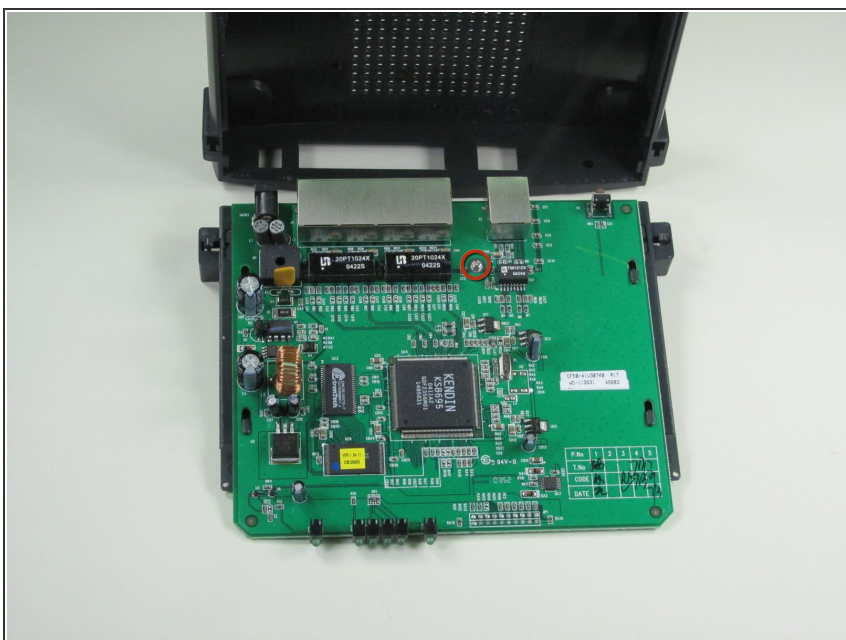
- ⓘ There actually aren't any screws or notches under the rubber feet on this model. A little force is all that's needed to pull off the front blue panel. (The front is held on by a recess/notch on each side)

Step 3



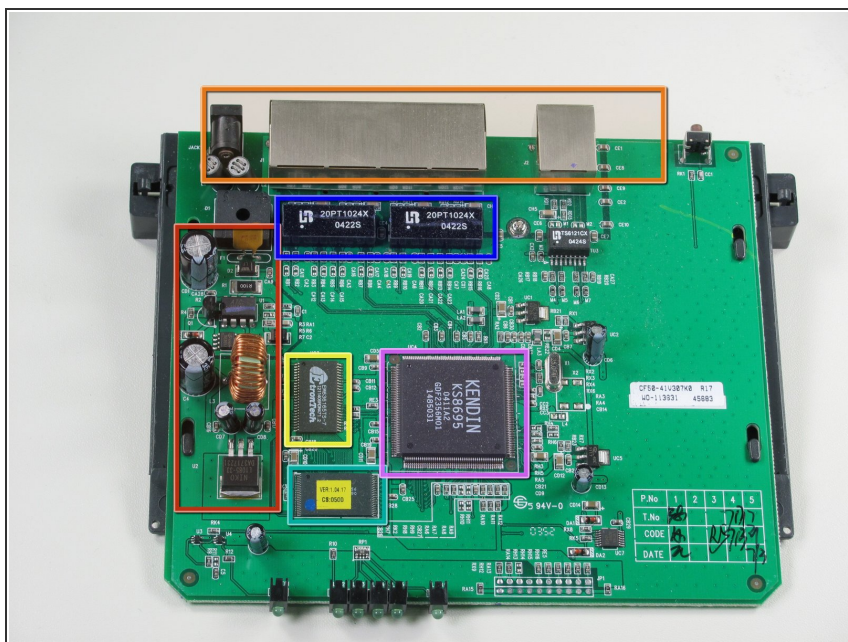
- Once the front blue panel is off, the top panel slides back and then comes off easily (it's connected to the bottom panel by two plastic notches).

Step 4



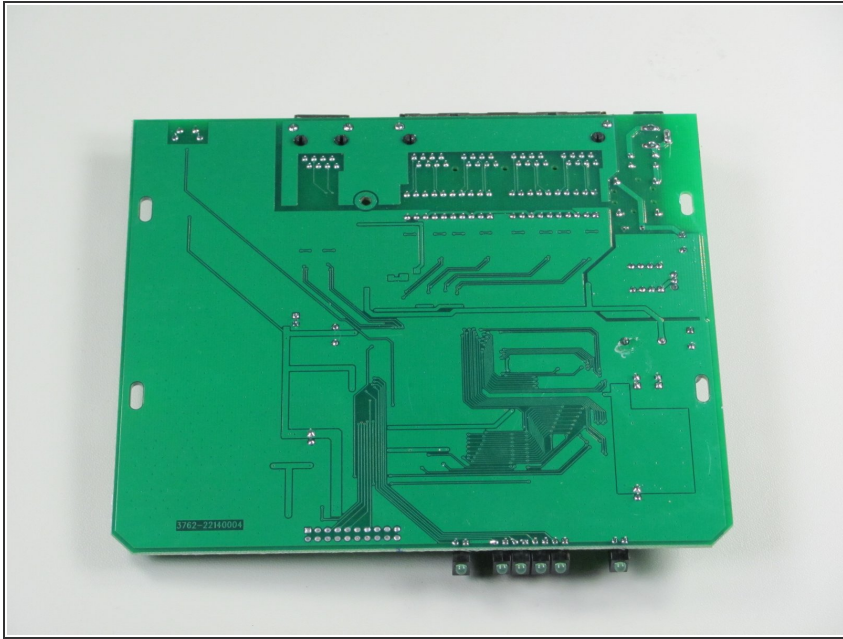
- Remove one small Philips screw from the logic board so you can remove the bottom panel.

Step 5



- After removing the single screw and sliding off the bottom panel, all that is left is the main circuit board.
- Main Components
 - Barrel-plug power connection / CAT5 / Reset button
 - Power Control
 - Line-drivers (allow CAT5 cables to carry data for 100m)
 - RAM (2Mb) (Stores MAC tables, etc)
 - KS8695 ARM922 (ARM Core, 5 switchboards, tcp/ip/udp packet interface)
 - RAM (1Mb)

Step 6



- Bottom view of circuit board.

To reassemble your device, follow these instructions in reverse order.