



Pokewalker Button Replacement

How to Replace a Cracked or Broken Button on a Pokewalker

Written By: Winni Stuart

INTRODUCTION

How to Replace a Cracked or Broken Button on a Pokewalker



TOOLS:

- [Phillips #0 Screwdriver](#) (1)
- [Spudger](#) (1)

Step 1 — Battery



- Locate the Screw on the Back of the Pokewalker.

Step 2



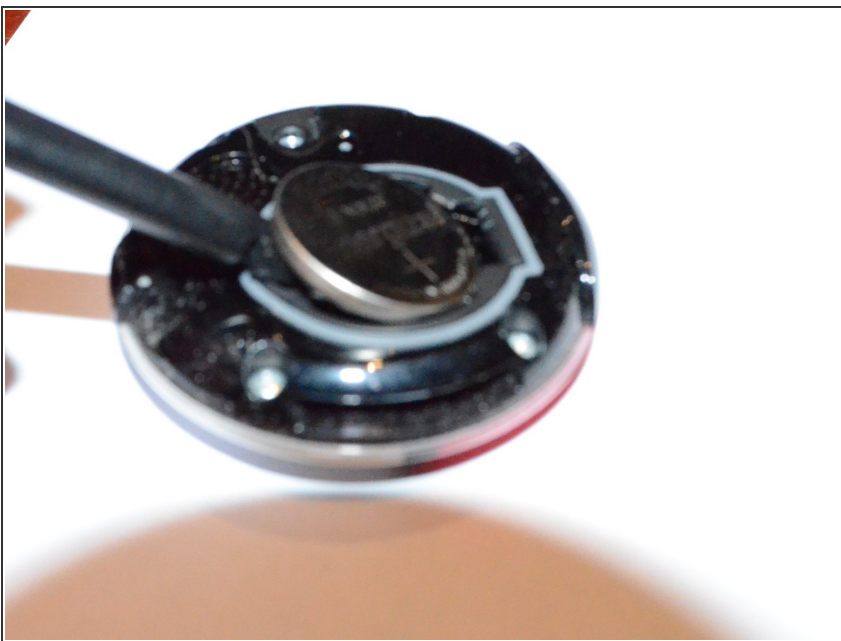
- Remove the Screw with a Phillips #0 Screwdriver
- ⓘ The screw is attached to the rear case with washers. don't worry about losing it.

Step 3



- Remove the Rear Cover from the Device

Step 4



- Use the flat end of a Spudger to Remove the Battery

Step 5 — Button



- Locate the 4 Screws Around the Device

Step 6



- Remove all 4 screws with a Y0 Triwing Screwdriver

Step 7



- Separate the 2 halves of the Device

 Do not Separate Completely as the Display is Still Connected by a Ribbon Cable

Step 8



- Use a Spudger to Flip the Latch holding the ribbon cable in place and use Tweezers to Pull it out

 Do not use Excessive force when reinserting the cable, because ribbon cables are fragile

Step 9



- Remove the Rubber-button thingy from the upper case
- ⓘ I have no idea what that thing is, edit this guide if you do.

Step 10



- Remove the 3 Plastic Buttons from the Case
- ⓘ It helps that the buttons only go in one way, makes it easier to reassemble

To reassemble your device, follow these instructions in reverse order.