



# Olympus D590 Lens Replacement

This guide shows how to replace the camera lens...

Written By: Joshua



# INTRODUCTION

This guide shows how to replace the camera lens and surrounding mechanisms (including the motor) on an Olympus D590.

---

## TOOLS:

[iFixit Opening Tool](#) (1)

[Phillips #00 Screwdriver](#) (1)

[Flathead 3/32" or 2.5 mm Screwdriver](#) (1)

[Tweezers](#) (1)

*Optional, but helpful*

[Phillips #0 Screwdriver](#) (1)

---

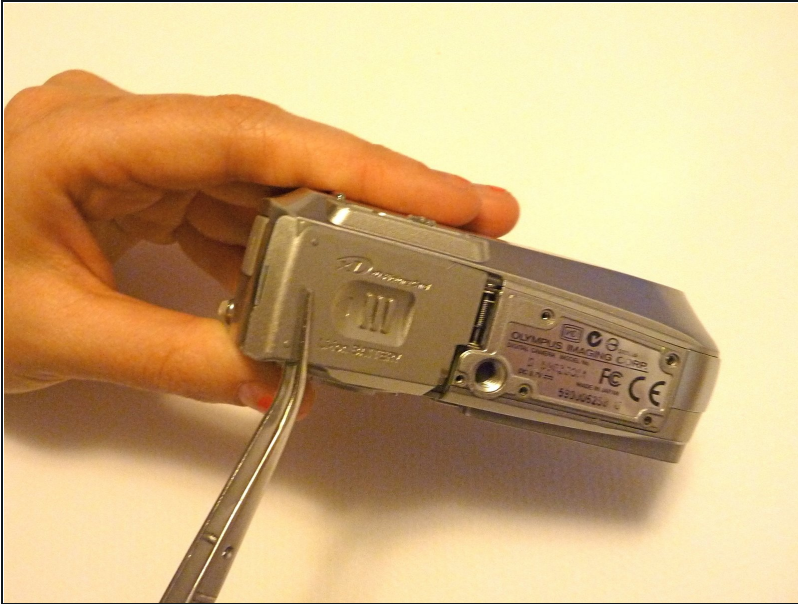
## Step 1 — Face Plate



- Remove five baseplate screws using a Phillips #00 screwdriver.

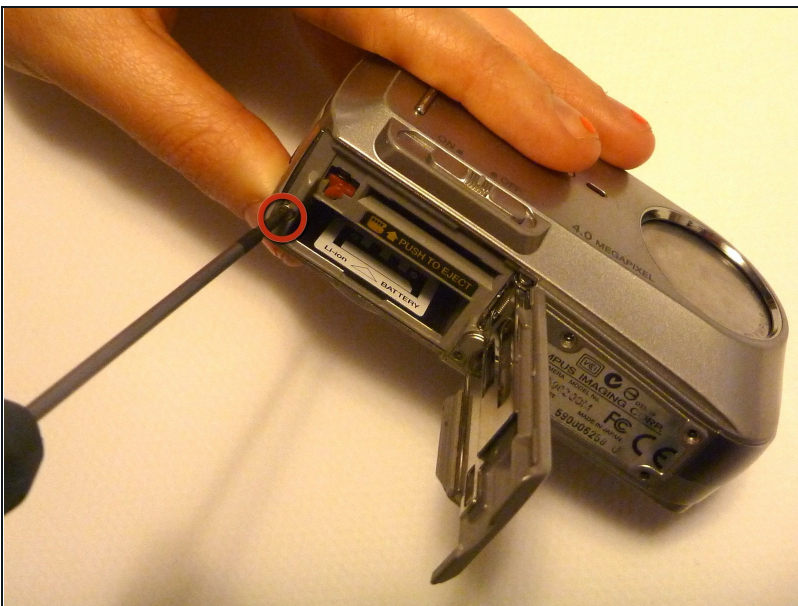


## Step 2



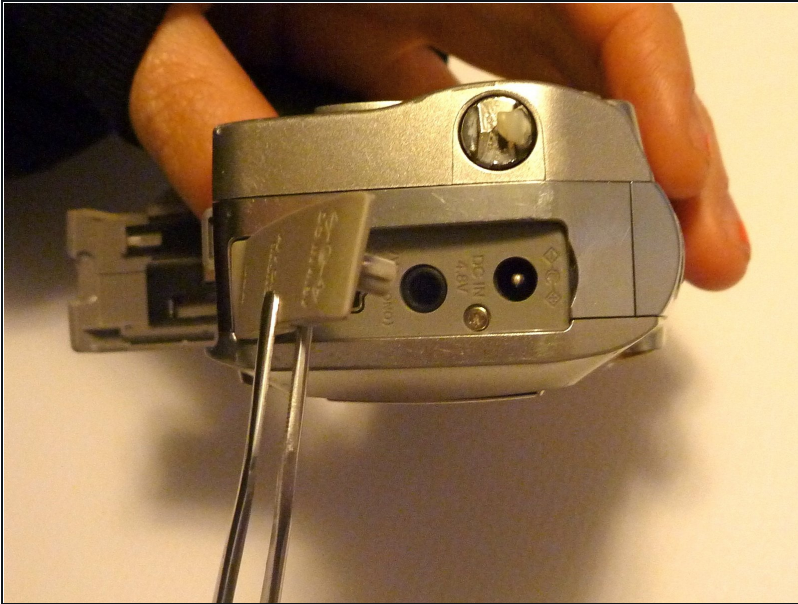
- Press and slide the battery cover retainer clip to the left. Use tweezers to lift the battery cover away.

## Step 3



- Remove the single screw from the battery housing using a Phillips #00 screwdriver.

## Step 4



- Using tweezers, lift the rubber plate to expose the ports.

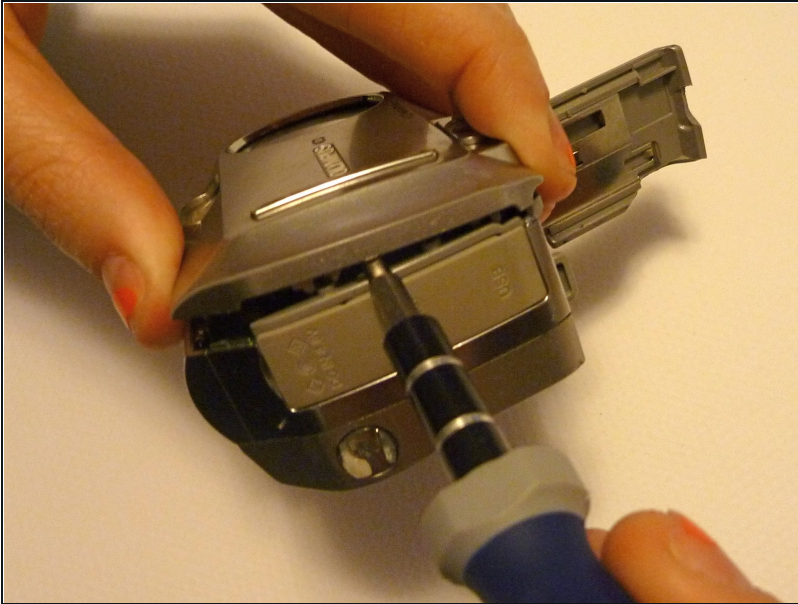
## Step 5



- Remove two screws from the ports using a Phillips #00 screwdriver.

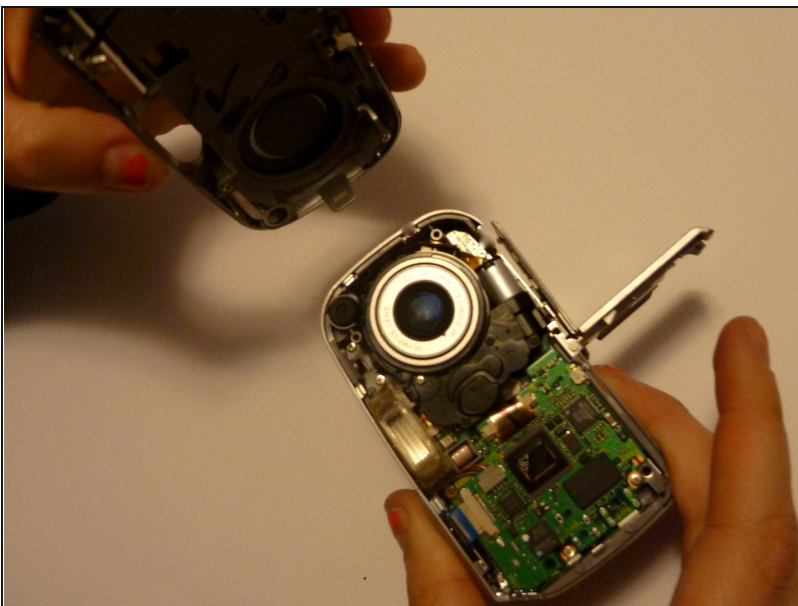


## Step 6



- Use a spudger to pry the faceplate away from the rest of the camera.

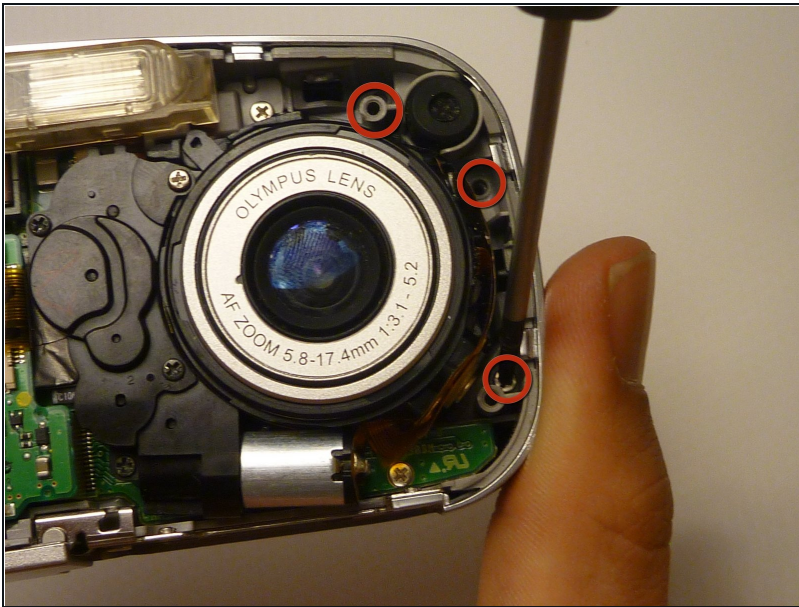
## Step 7



- To avoid disconnection of the connector line to the motherboard, use caution when pulling faceplate away from camera case.

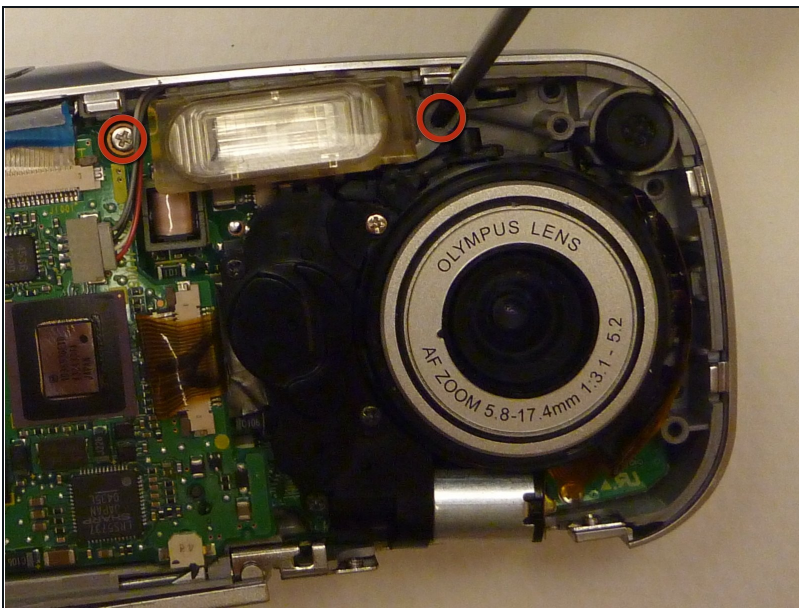
⚠ Damage to the connector line will prevent the on/off power switch's operational function.

## Step 8 — Backplate



- Using a Phillips #00 screwdriver, remove three screws fastened to the camera backplate edge.

## Step 9



- Using a Phillips #00 screwdriver, remove the two camera flash screws secured to either side of bulb housing component.



## Step 10



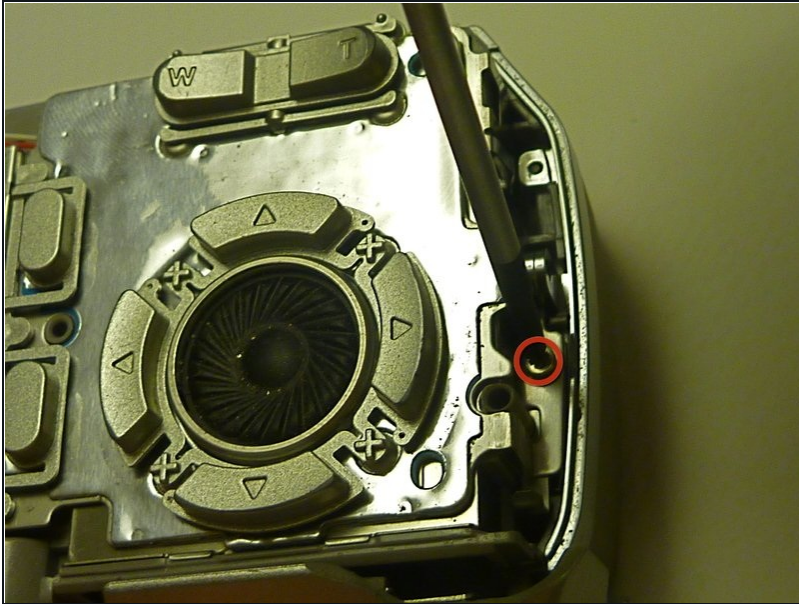
- Using an iFixit opening tool, pry the backplate from the camera internal housing component.

## Step 11



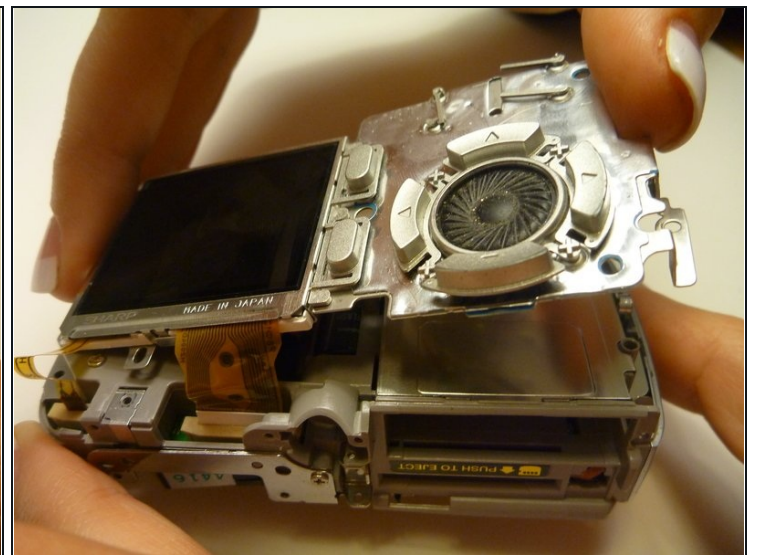
- Pull the backplate away from the camera internal housing component.

## Step 12 — LCD Screen



- Remove one screw Phillips #00 from the right side of the LCD screen camera internal housing component.

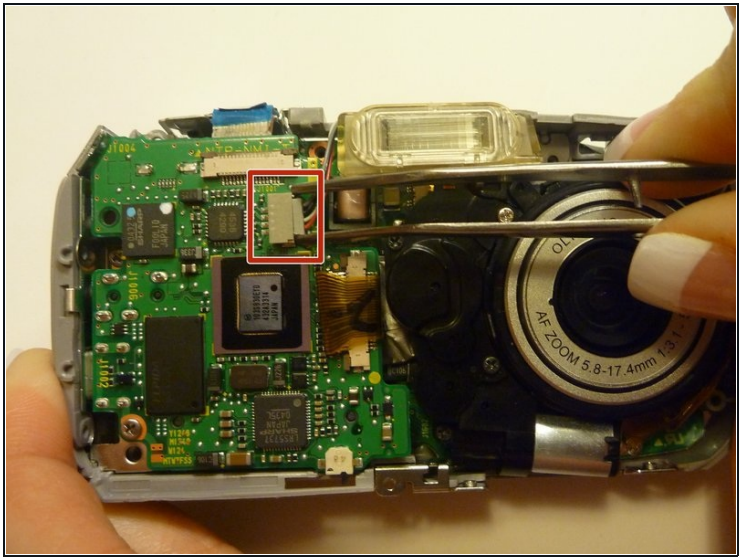
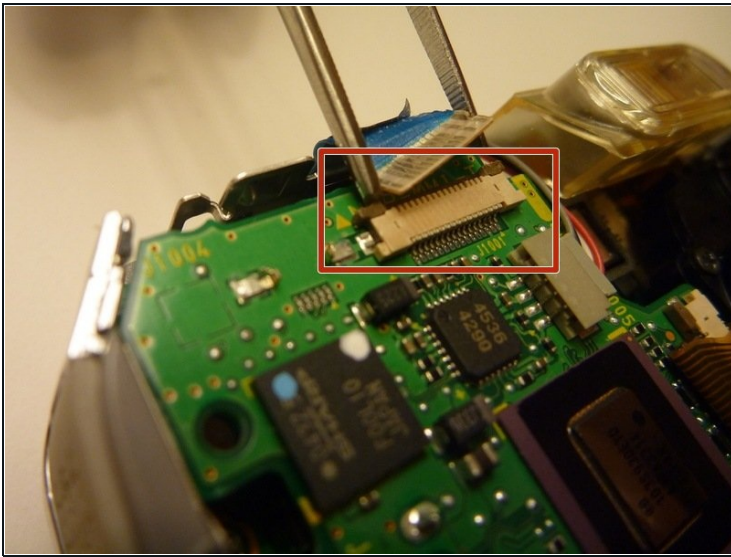
## Step 13



- To check that all screws are removed from the exterior side panel, gradually slide and lift no more than 3cm away from the camera internal component body.

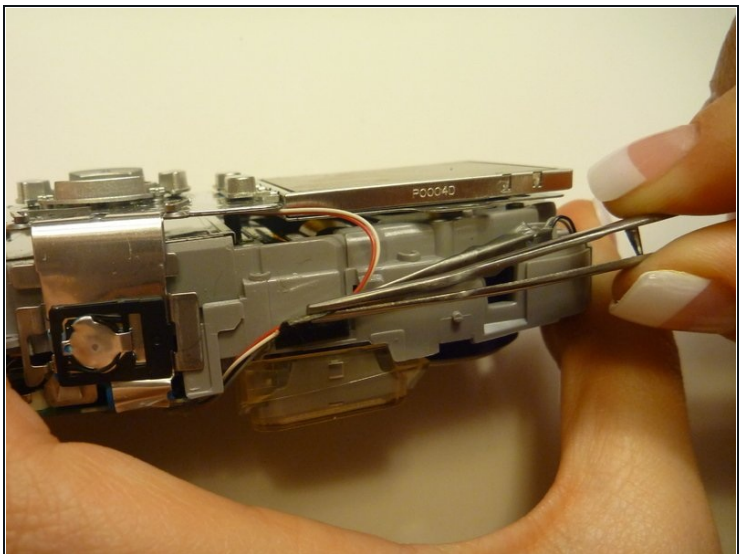
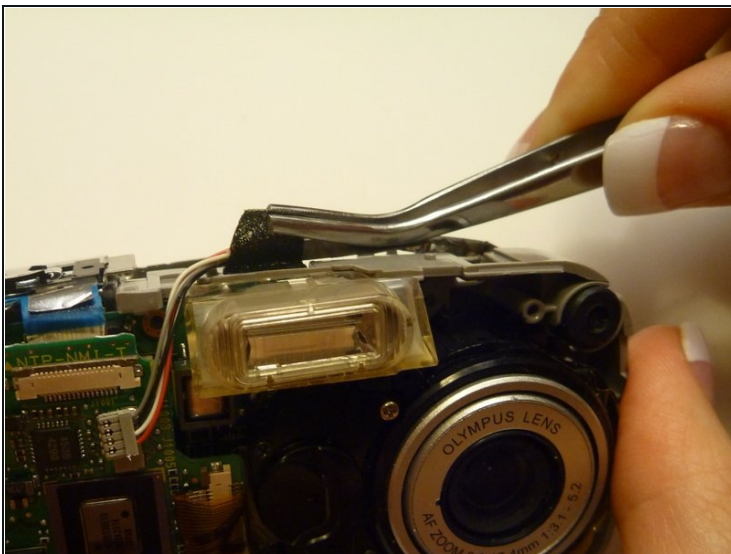


## Step 14



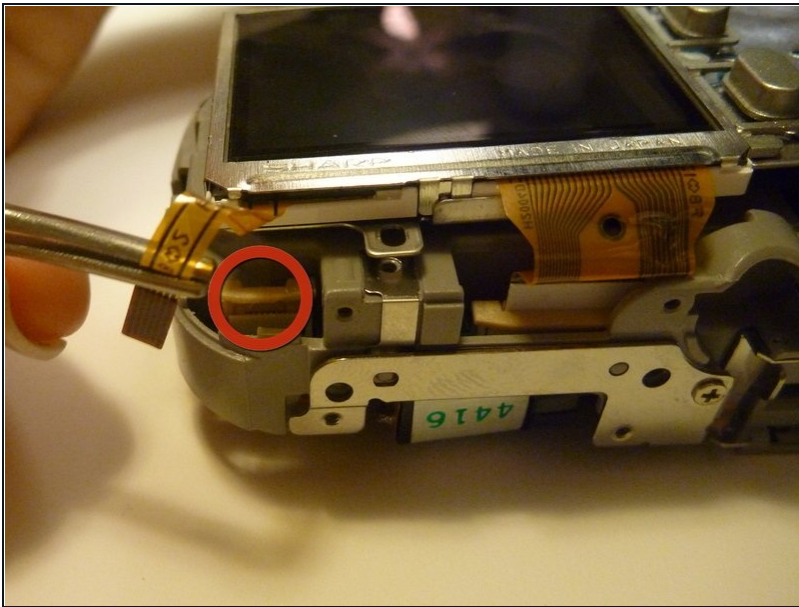
- View the front of the camera internal housing component.
  - Using tweezers, detach the gray connector and blue wiring tape.
- ⚠ Be cautious to gently wiggle and pull blue wiring tape and gray wire connector during detachment.

## Step 15



- View the top of the camera internal housing component.
- Using tweezers, gently lift the black tape exposing all connector wires.

## Step 16

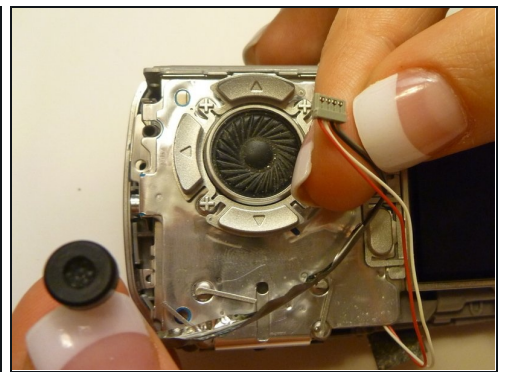
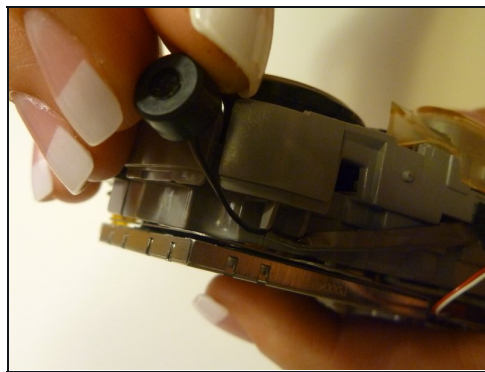


- View the bottom of the camera internal housing component.

⚠ Caution: Keep yellow taped wire attached to the LCD screen.

- Use tweezers to gently wiggle, pull, and detach tape from the surface of the camera internal housing component.

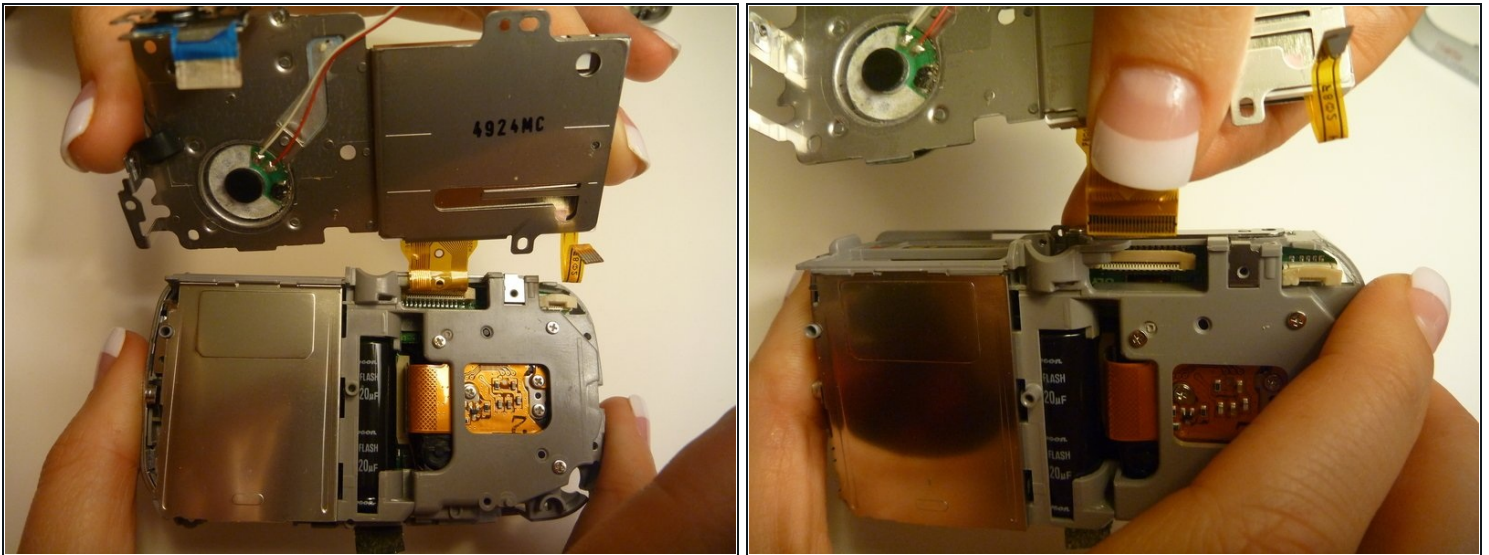
## Step 17



- View the front of the camera internal housing component.
- Using tweezers, gently lift the speaker, cautiously maneuvering the wire away from the side of the internal housing component toward the front of the camera internal housing component.

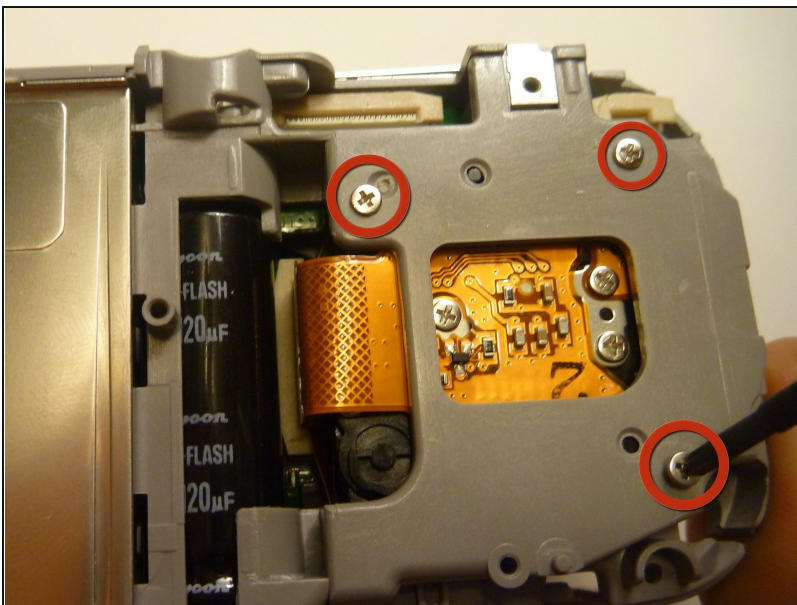


## Step 18



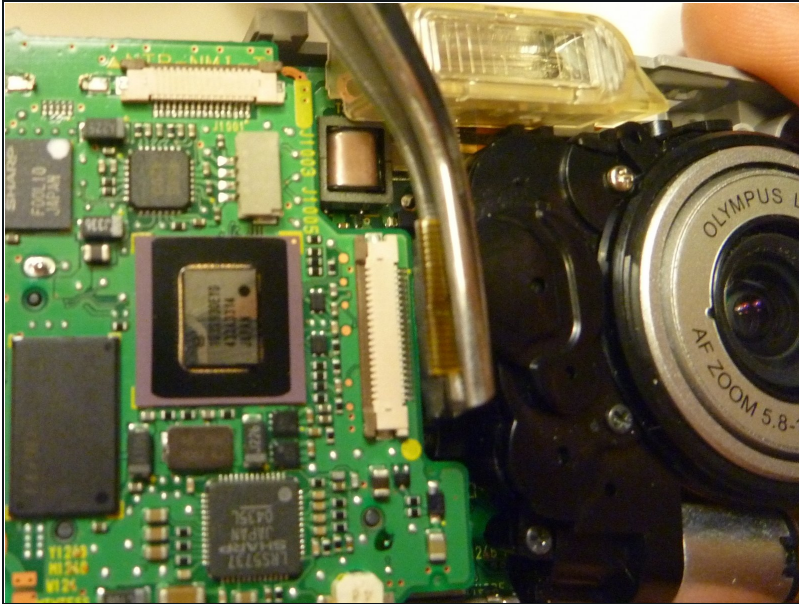
- Gently lift the LCD screen away from the camera internal housing component hinging the thick yellow wiring tape attached to the camera internal housing component.
- Use a forefinger and thumb to gently pull the thick yellow wiring tape out of the camera internal housing component.

## Step 19 — Lens



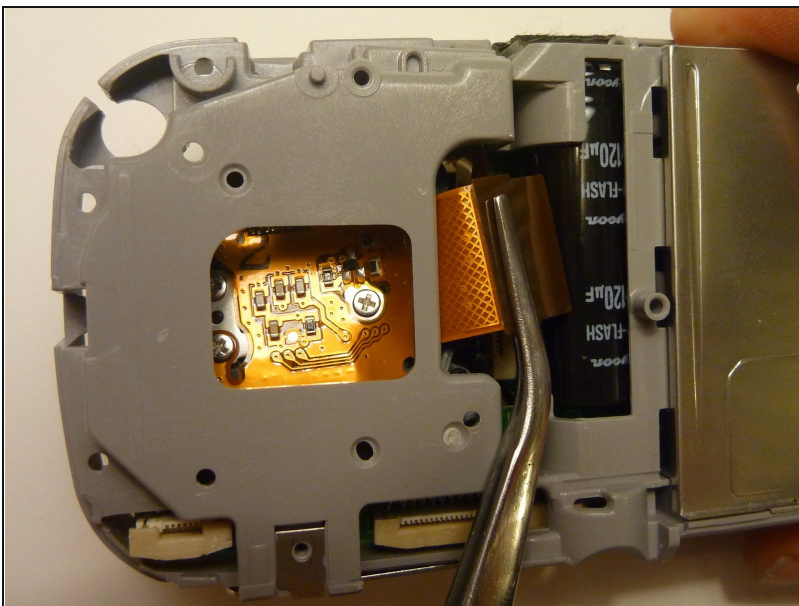
- Flip the camera so you are looking at the back.
- Looking at the back of the camera, remove the 3 screws behind the camera lens.

## Step 20



- Flip the camera so that the front lens is facing up.
- Disconnect the lens from the logic board.

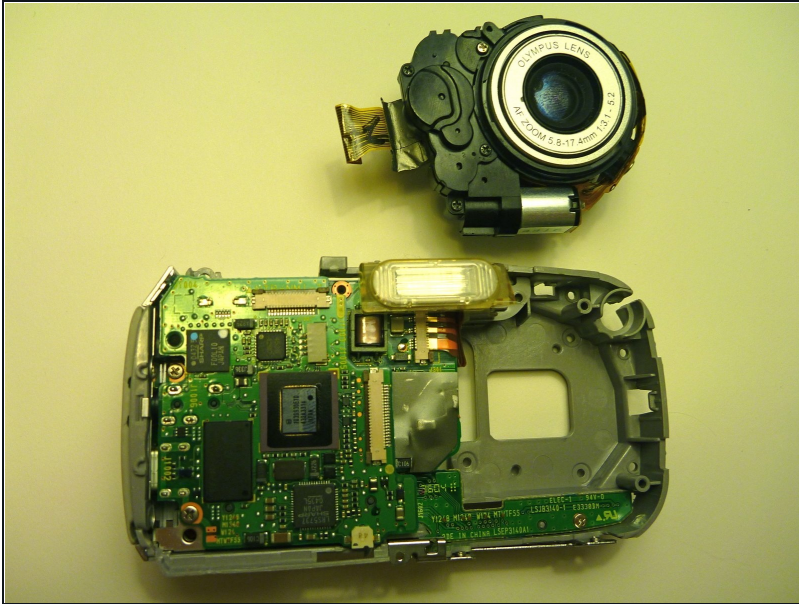
## Step 21



- Flip the camera back over so that the back of the camera is facing you, and the lens is facing away.
- Disconnect the wire that connects the logic board to the lens assembly.
  - ① Gently pull back on the wire to disconnect it safely.



## Step 22



- Flip the camera back around so that the front is facing you.
- Carefully lift the lens assembly out of the camera.

---

To reassemble your device, follow these instructions in reverse order.