



# MacBook Pro 13" Retina Display Mid 2014

## AirPort Board Replacement

Replace the AirPort board in your MacBook Pro 13" Retina Display Mid 2014.

Written By: Sam Goldheart



# INTRODUCTION

Use this guide to replace the AirPort card.



## TOOLS:

- [P5 Pentalobe Screwdriver Retina MacBook Pro and Air](#) (1)
- [Spudger](#) (1)
- [T5 Torx Screwdriver](#) (1)



## PARTS:

- [MacBook Pro 13" and 15" Retina \(Late 2013-Mid 2014\) Airport/Bluetooth Board](#) (1)

## Step 1 — Lower Case



- Remove the following ten screws securing the lower case to the upper case:
  - Two 2.3 mm P5 Pentalobe screws
  - Eight 3.0 mm P5 Pentalobe screws
- ☑ Throughout this repair, [keep track of each screw](#) and make sure it goes back exactly where it came from to avoid damaging your device.

## Step 2



- Wedge your fingers between the upper case and the lower case.
- Gently pull the lower case away from the upper case to remove it.

## Step 3



-  The lower case is connected to the upper case with two plastic clips near its center.
-  During reassembly, gently push down the center of the lower case to reattach the two plastic clips.

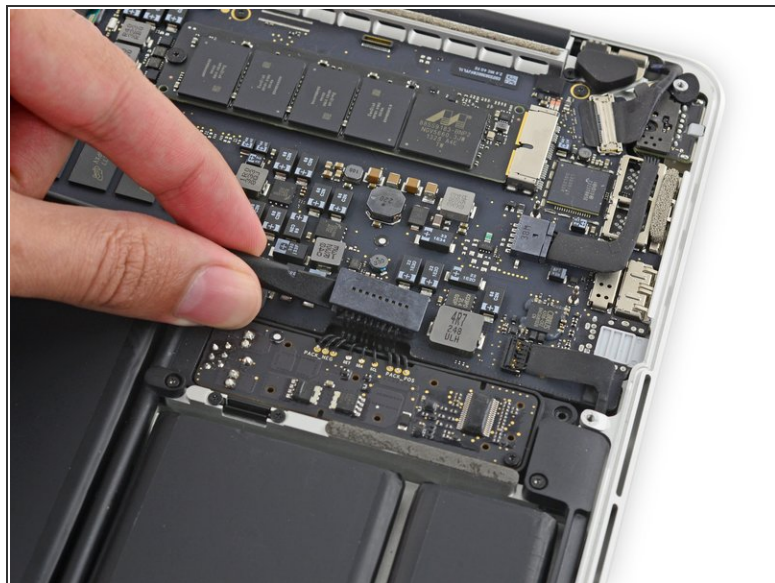
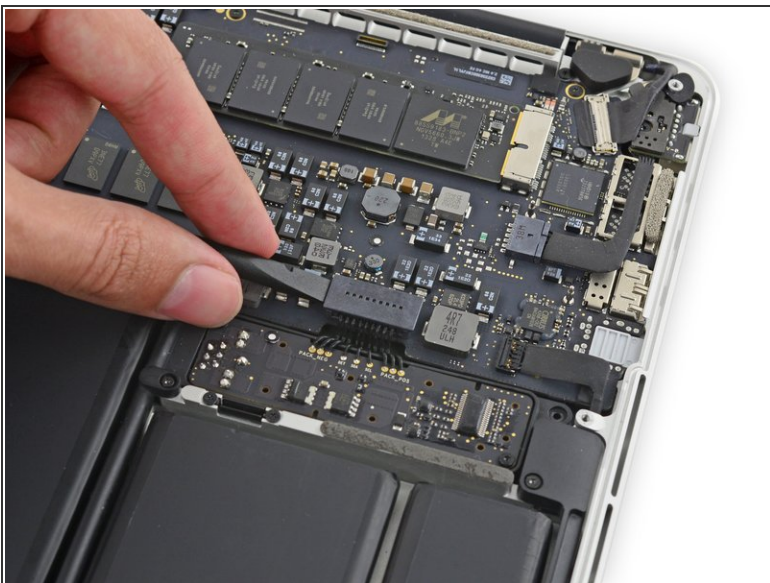
## Step 4 — Battery Connector



-  If necessary, remove the plastic cover adhered to the battery contact board.



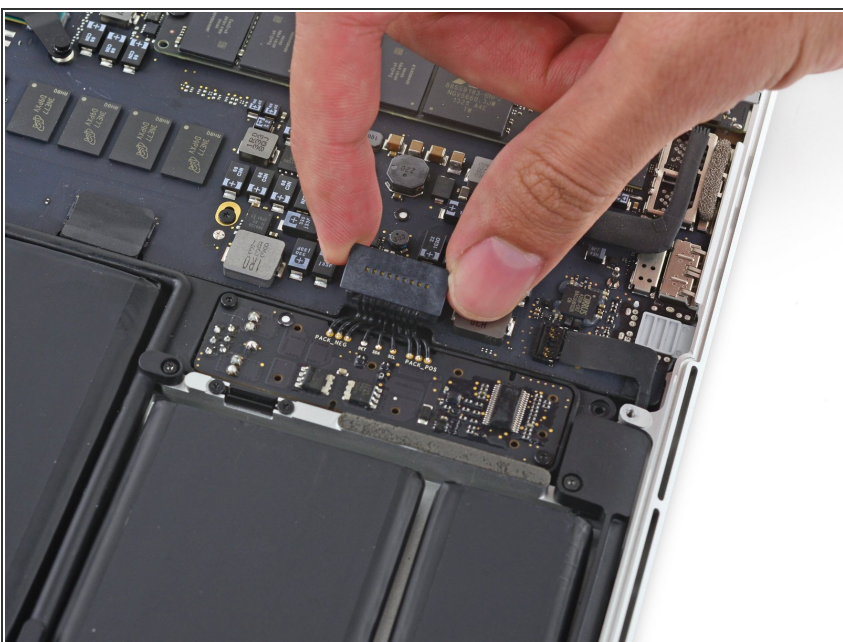
## Step 5



- Use the flat end of a spudger to lift the battery connector straight up out of its socket on the logic board.

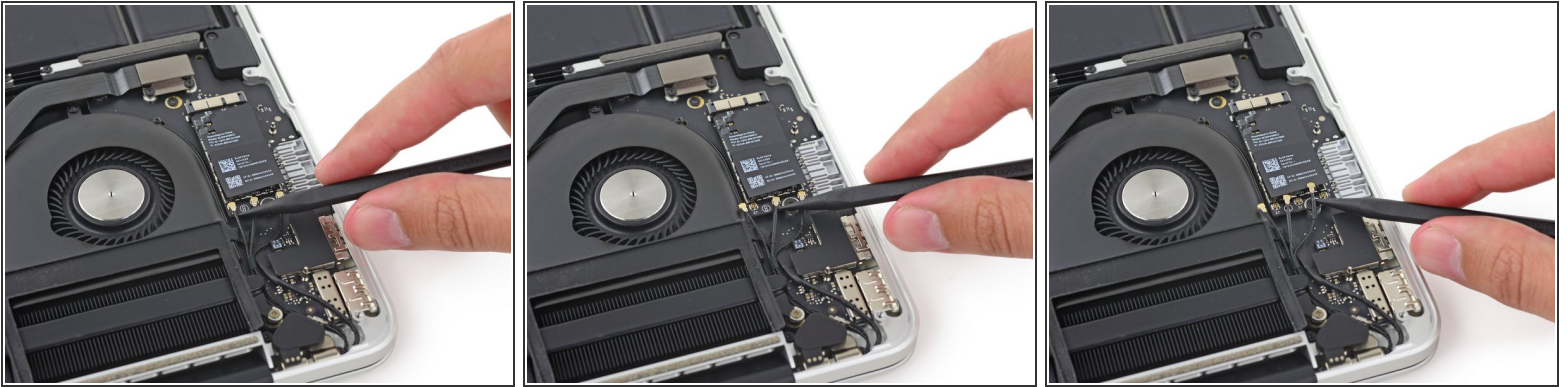
⚠ Be sure you lift up only on the connector itself, **not** the socket, or you risk permanent damage to the logic board.

## Step 6



- ☑ Bend the battery connector up out of the way to prevent accidental contact with its socket during your repair.

## Step 7 — AirPort Board



- Wedge the tip of a spudger underneath each of the antenna cables, near their connectors and pry up to disconnect them from the AirPort board.

✦ The three cables are coded with black sleeves of different lengths. During reassembly:

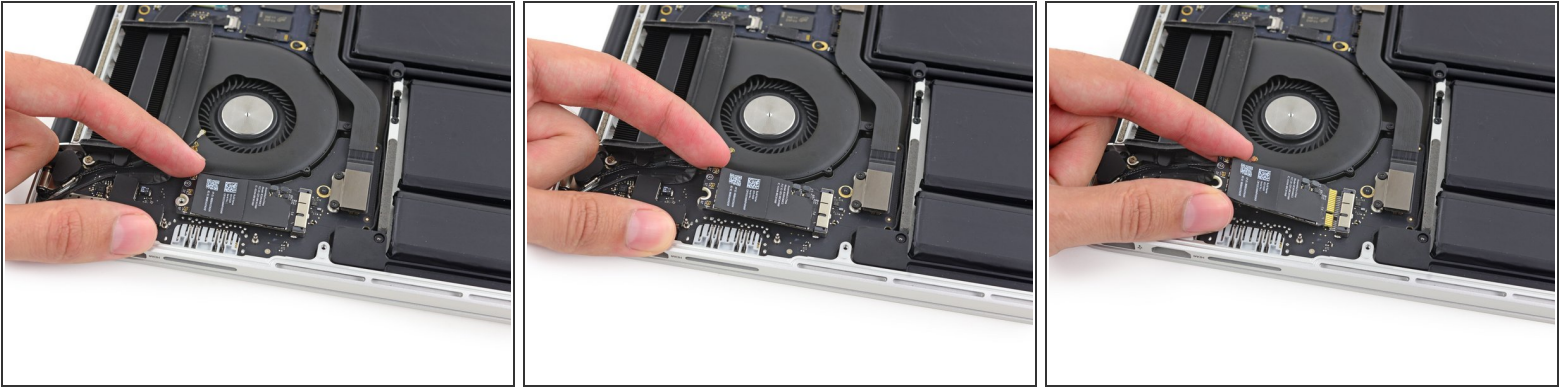
- Connect the long-sleeved cable to the center socket.
- The short-sleeved cable connects next to the screw.
- The remaining cable has no sleeve, and connects in the last empty socket, next to the fan.

## Step 8



- Remove the single 2.7 mm T5 Torx screw securing the AirPort board to the I/O board.

## Step 9



- Lift the free end of the AirPort board up slightly and pull it straight out of its socket on the logic board.

To reassemble your device, follow these instructions in reverse order.