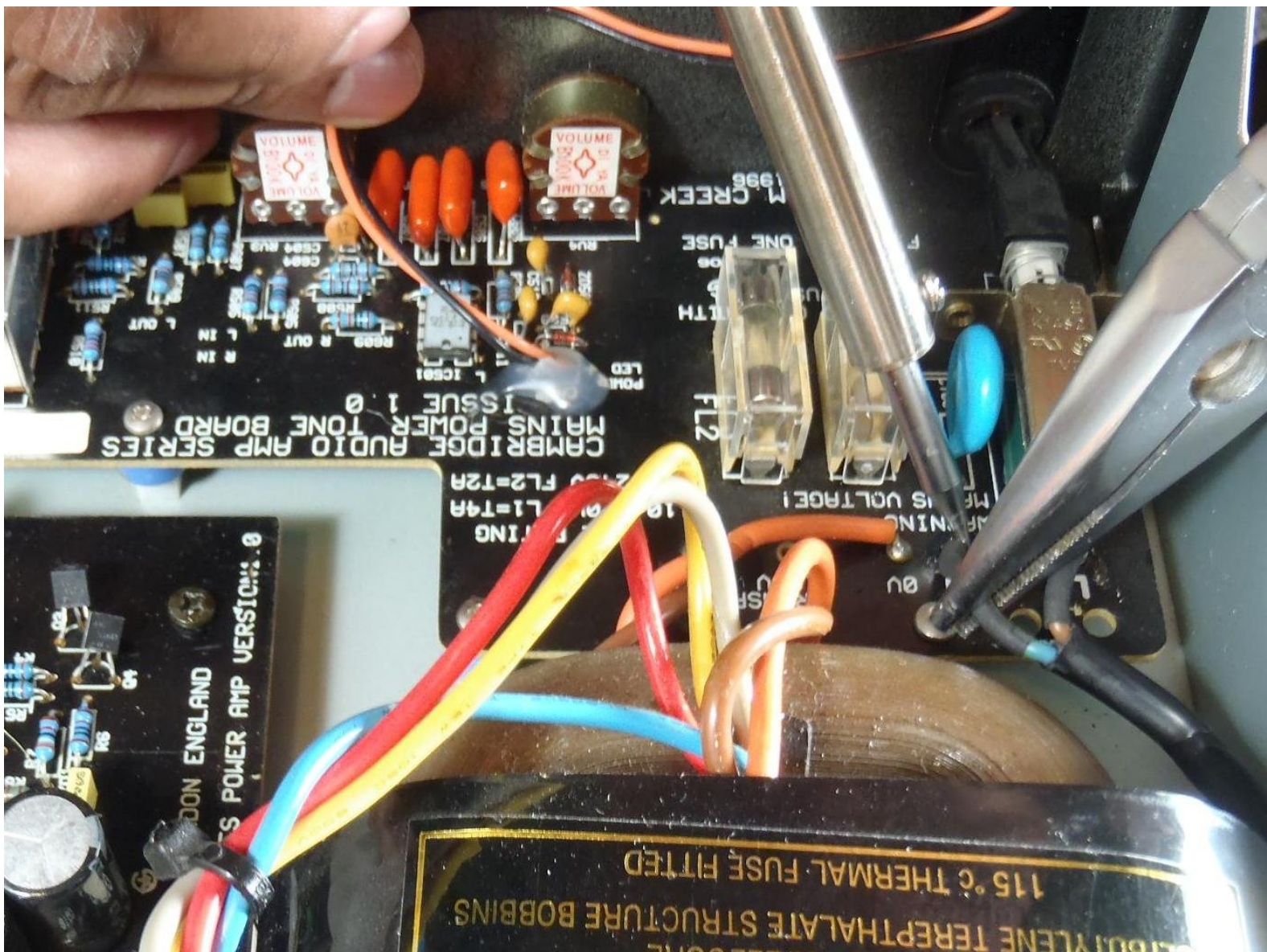




Cambridge Audio A3i Power Cord and Transformer Replacement

Written By: Colby



INTRODUCTION

In this guide we will replace the power cord and the transformer. The transformer is the large, heavy device that converts the relatively high 220V input voltage into a lower voltage for the amplifier.

TOOLS:

- [7mm Nut Driver](#) (1)
 - [Large Needle Nose Pliers](#) (1)
 - [Phillips #2 Screwdriver](#) (1)
 - [Soldering Workstation](#) (1)
 - [Flush Wire Cutters](#) (1)
-

Step 1 — Case



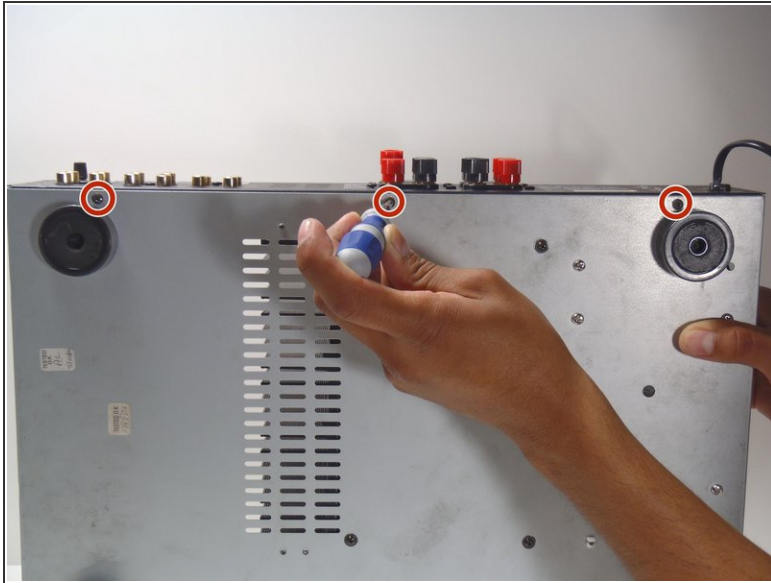
- Remove 2 screws from each side of the amplifier.

Step 2



- Remove 2 screws on rear of device. Slide top cover up and back from main case.

Step 3



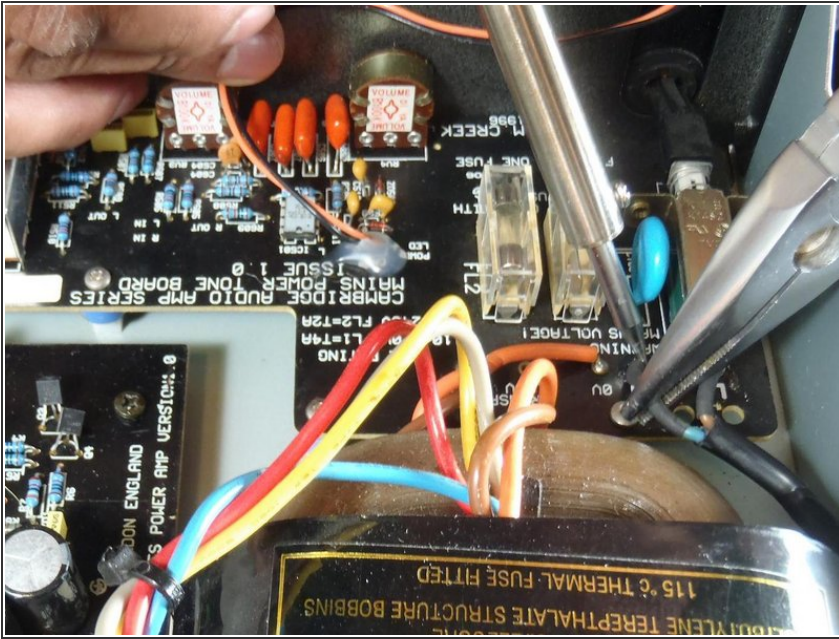
- Remove 3 screws on bottom of case.
- Remove 13 screws on rear panel.
- ⓘ Do not move the rear panel too far, as the power cord is still connected.

Step 4



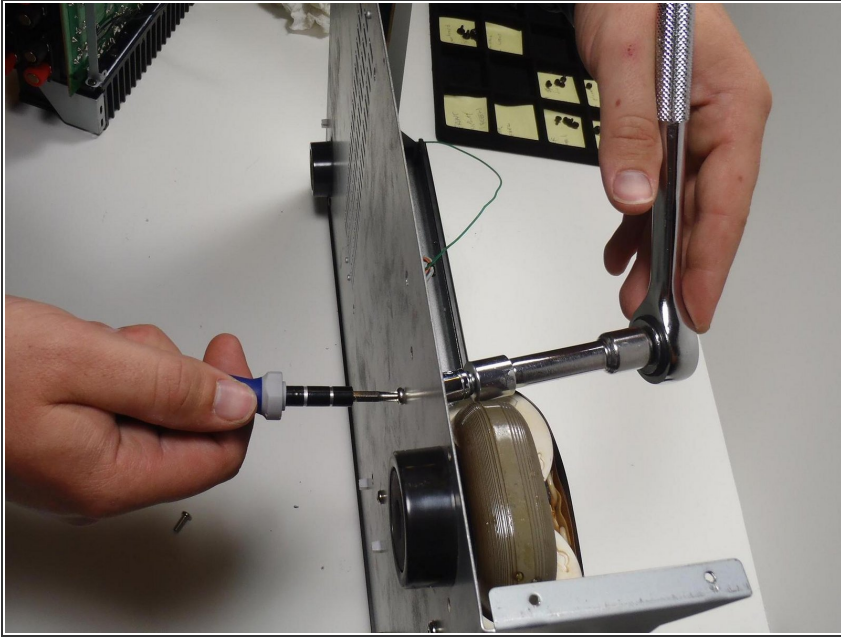
- Using a pair of pliers, squeeze the retainer for the power cord as shown and pull it toward the external side the panel.
- It may require some wiggling, but it should slip out of the hole and then off of the cord.

Step 5 — Power Cord and Transformer



- Carefully de-solder ends of power cord from circuit board.
- Keep track of the colors of the cords. The brown cord leads to the L on the circuit board, and this cord will lead to a fuse in the power plug. The blue cord leads to the N on the board.
- Finally, pull the power cord through the rear panel to completely remove it.

Step 6



- ① To remove the transformer the motherboard must be removed. This is to gain access to the solder on the power cords. -See guide for removing motherboard.
- Remove the 4 nuts holding down the transformer bracket using a 7mm nut driver or socket.

To reassemble your device, follow these instructions in reverse order.