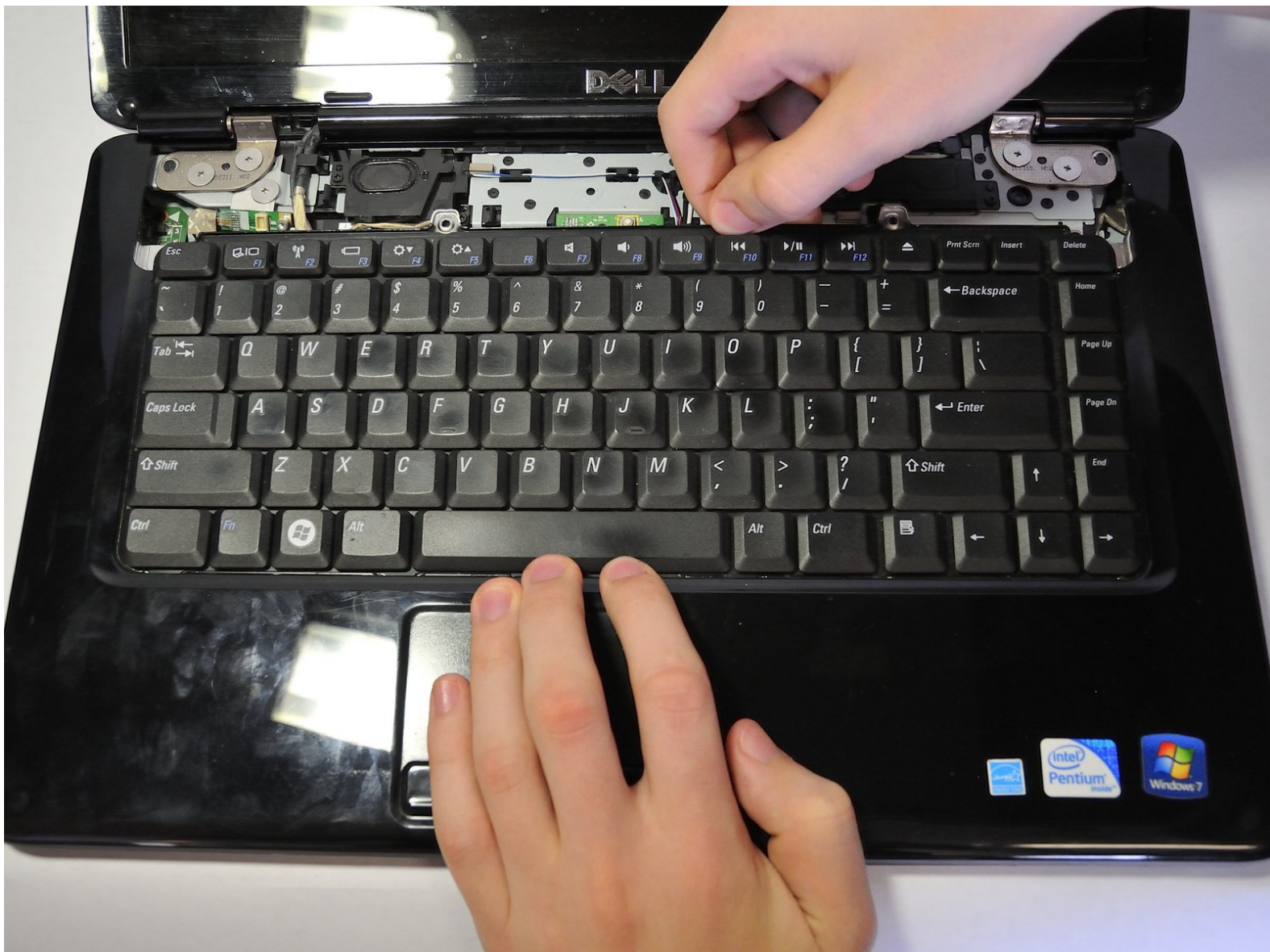




Dell Inspiron 1545 Keyboard Replacement

This will cover the removal of the keyboard to clean or to replace.

Written By: Nathan Lemay



INTRODUCTION

There are multiple issues that can arise with the keyboard, this guide will allow you to fix a number of them. Using this guide you can clean the keyboard or access some of the more complex components of the laptop.



TOOLS:

- [Phillips #1 Screwdriver](#) (1)
- [iFixit Opening Tools](#) (1)



PARTS:

- [Dell Inspiron 1545 Keyboard](#) (1)

Step 1 — Battery



- ✦ Before attempting to remove the battery ensure that the laptop is disconnected from all power sources and turned off.
- Turn the laptop over to its back.

Step 2



- Slide the release latch while simultaneously pulling backwards on the battery.

Step 3



- Slide the battery out of the battery bay.

Step 4 — Base Cover



- Unscrew the four screws (3mm Phillips #1) that hold the base cover in place.
- ⓘ The screws are connected to the base cover by a washer and do not remove from the base cover.

Step 5



- Carefully lift the base cover vertically away from the laptop.

Step 6 — Center Control Cover



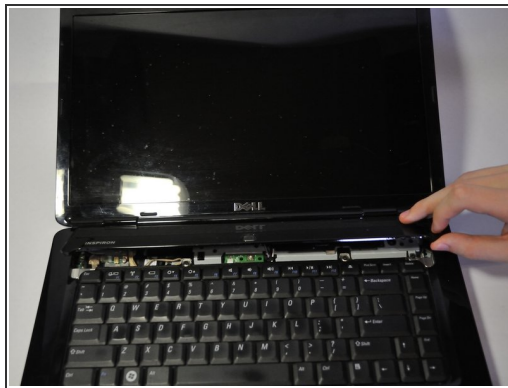
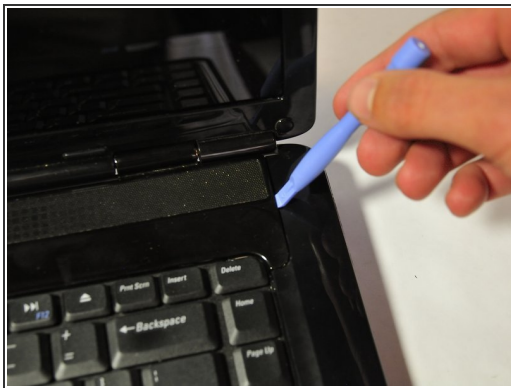
- After removing the battery, remove the two screws (3mm Phillips #1) beneath it. These screws hold the Center Control Cover in place.

Step 7



- Flip the laptop over to the front and open the display as far as possible.

Step 8



 The Center Control Cover is VERY fragile, be careful when using prying tools.

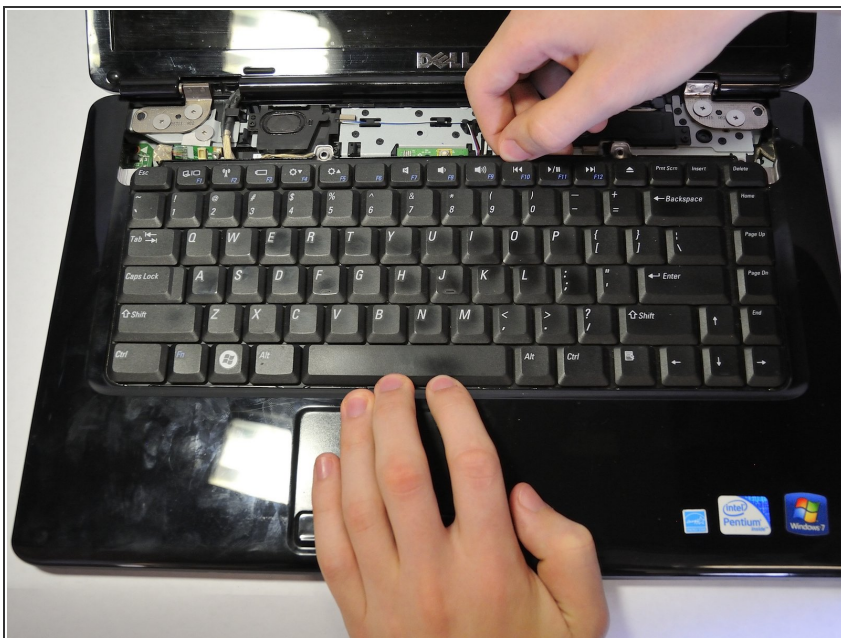
- Pry the Center Control Cover from the laptop. On the right there is a small divot, it is advised that you start removing the panel from here.
- Carefully lift the Center Control Cover away from the laptop.

Step 9 — Keyboard



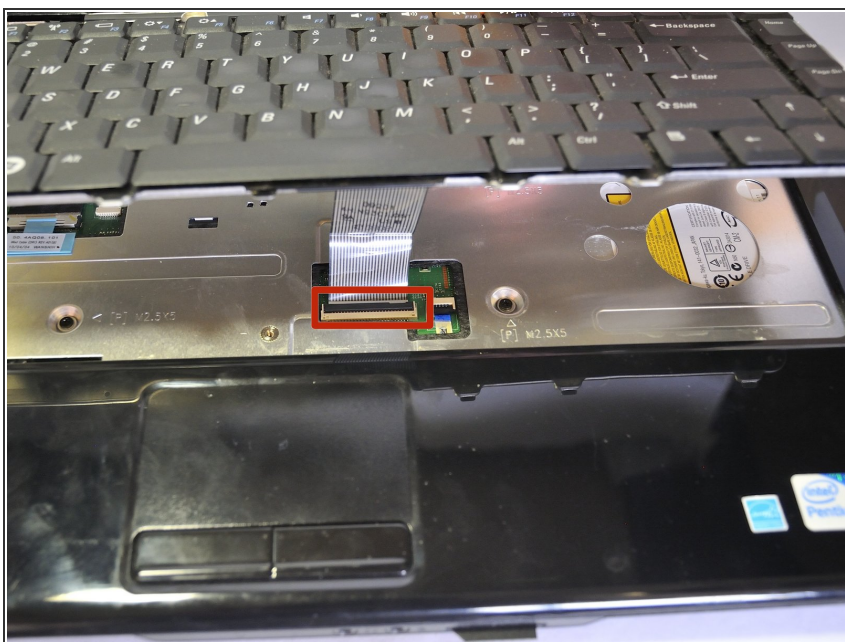
- Remove the two screws (5mm Phillips #1) at the top of the keyboard.

Step 10



- Slide the keyboard out and away from the laptop and lift it up to access the keyboard connector.
- ⚠ Do not pull hard on the keyboard while removing it, you may damage the keyboard or the keyboard connector.

Step 11



- Lift the connector latch that secures the keyboard cable to the connector on the motherboard and remove the cable.

Step 12



- Lift the keyboard up and away from the laptop.

To reassemble your device, follow these instructions in reverse order.