



Motorola i850 SIM Card Replacement

Written By: Alex Jones



INTRODUCTION

Replace the SIM card in your i850!

Step 1 — Disassembling Motorola i850 Back Cover



- Use your thumb to slide the back cover locker away from the antenna.

Step 2



- Slide the back cover towards the antenna while lifting the cover away from the phone.

Step 3 — Battery



- Place your thumb on the indicated corner while stabilizing the phone and the upper portion of the battery with your forefinger.

Step 4



- Lift the battery out of the phone while pushing it towards the antenna.

Step 5 — SIM Card



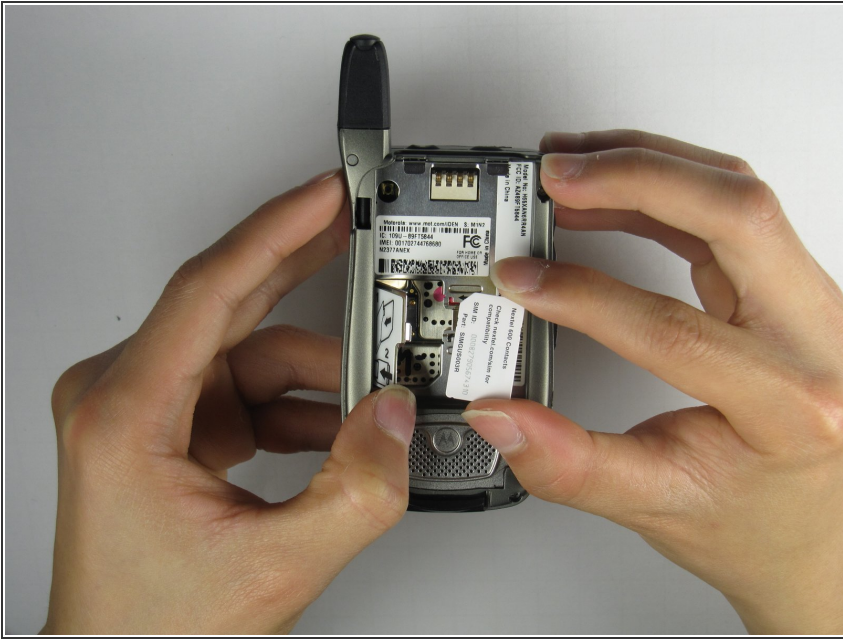
- Place thumb on SIM Card door latch.

Step 6



- Slide the SIM Card door latch away from the SIM Card. The door should pop open. If it does not pop open, use a fingernail to open it.

Step 7



- Lift the SIM Card with your thumb and forefinger to complete the removal of the SIM card!

To reassemble your device, follow these instructions in reverse order.