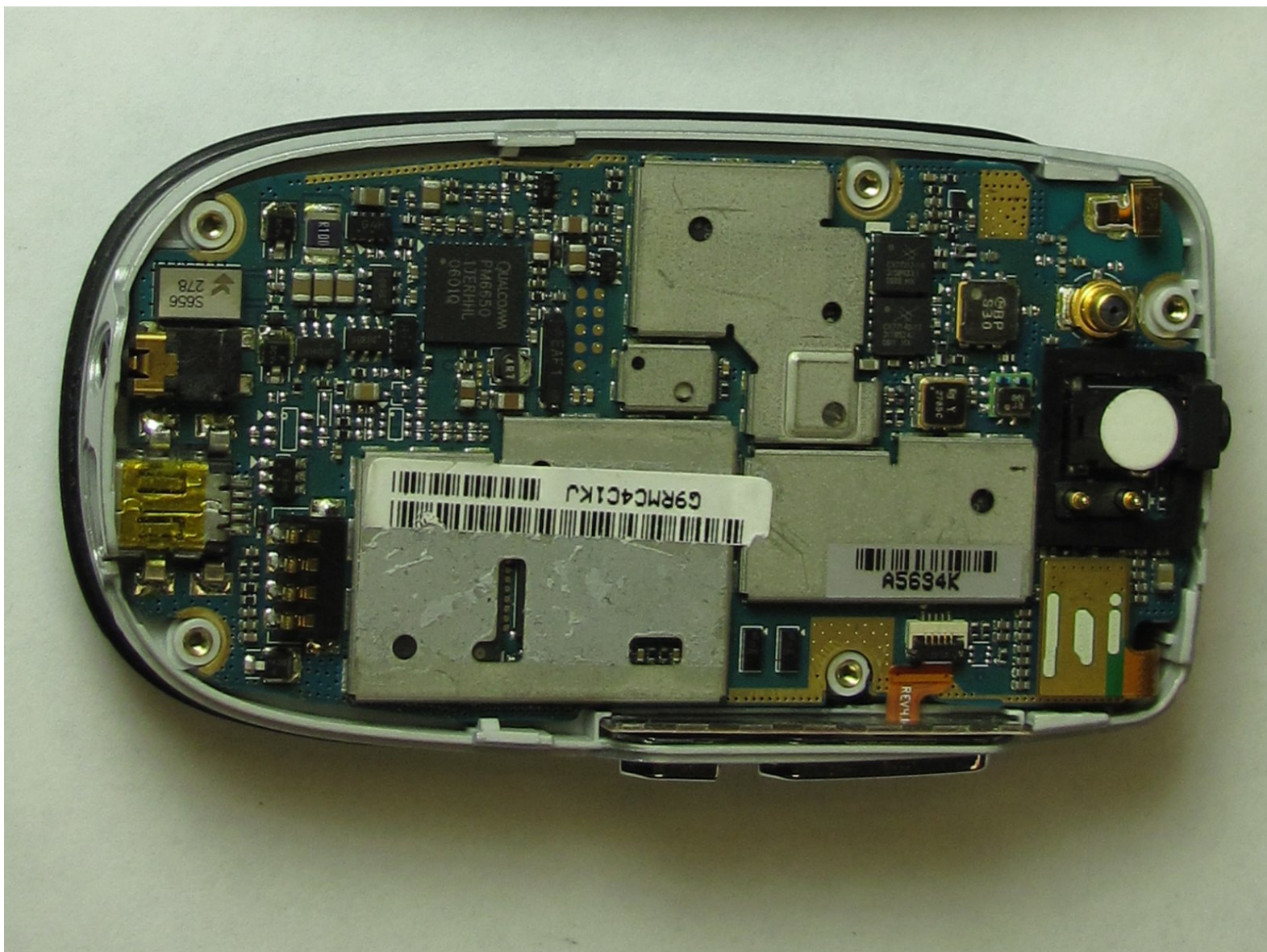




# Motorola C290 Logic Board Replacement

Written By: Paul



---

# INTRODUCTION

This repair guide will show how to get to the logic board and replace it

---



## TOOLS:

- [Spudger](#) (1)
  - [T6 Torx Screwdriver](#) (1)
  - [iFixit Opening Tools](#) (1)
-

## Step 1 — Battery



- Position Motorola C290 so that the back of the phone is facing up.
  - Apply pressure to the back cover while simultaneously sliding it downwards.
- i** Note: It may be easiest to apply pressure to the ridges at the top of the back cover.



## Step 2



- Place your finger in the notch at the top of the battery.
- Gently lift and pull out battery.

## Step 3 — Antenna



- Unscrew antenna head from top of phone by twisting counterclockwise.
- Pull the antenna out through the top hole and set aside.


## Step 4



- Remove the plastic tube by lifting the bottom and pulling out towards yourself.

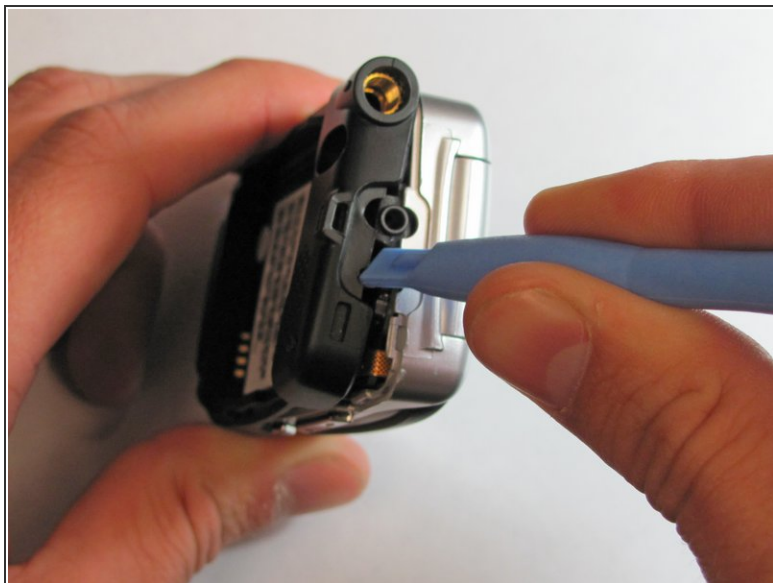
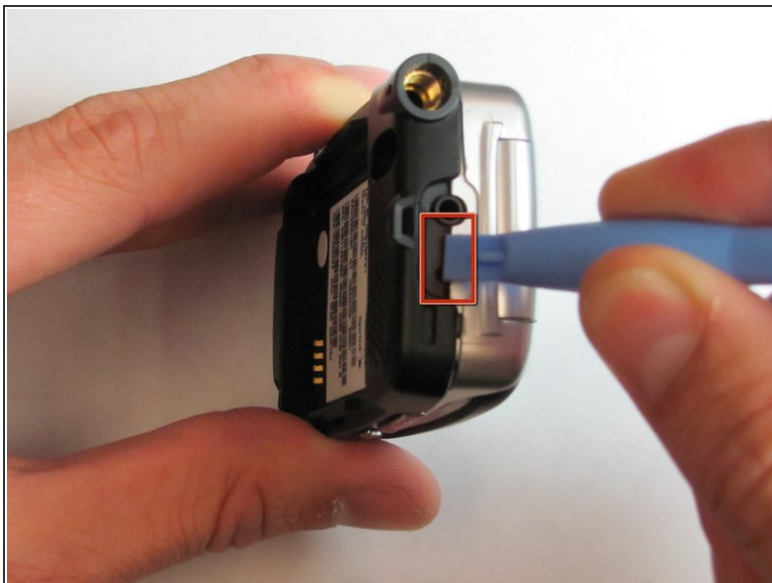
## Step 5 — Logic Board



- Insert a Spudger (or pushpin) into the top notch of the rubber cover, located on the top of the phone.
- Press down and rotate the Spudger lifting the rubber cover. Remove and set cover aside.
-  Note: This will reveal a screw. Five screws should now be visible.
- Using a T6 Torx screwdriver, unscrew all 5 screws and carefully set them aside.

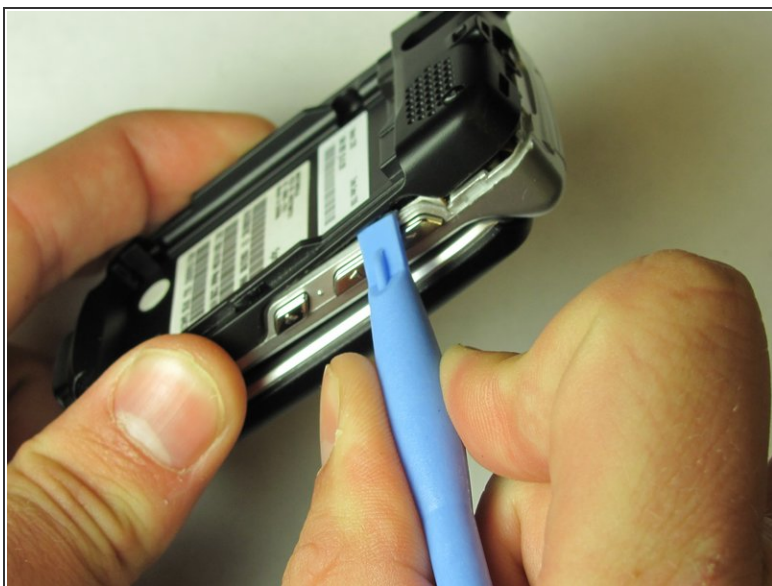


## Step 6



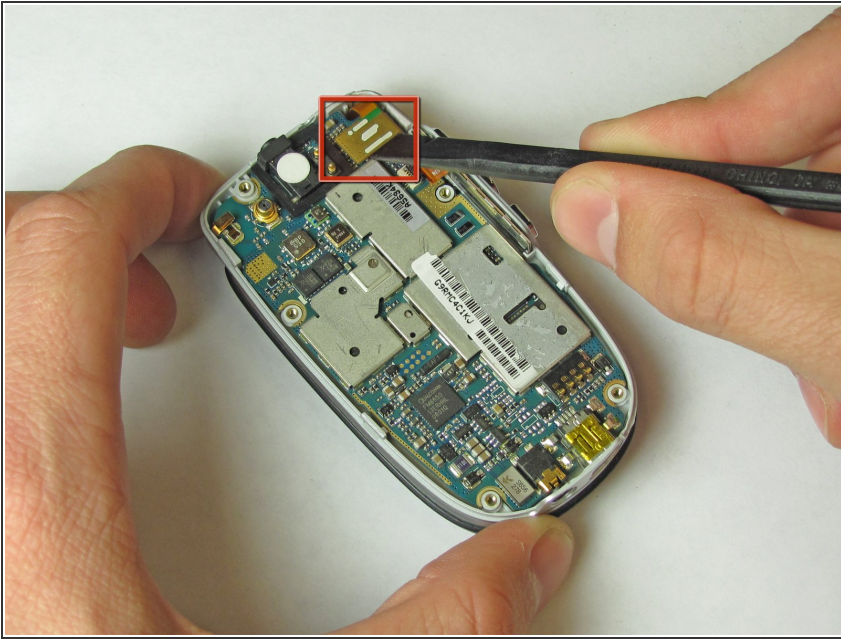
- Insert the plastic opening tool in the groove at the top of the phone.
- Rotate the tool to create an opening between the logic board cover and case.

## Step 7



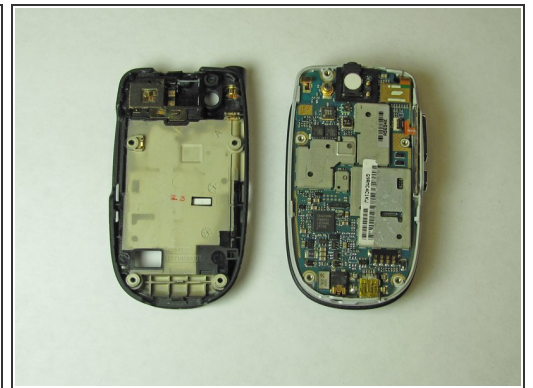
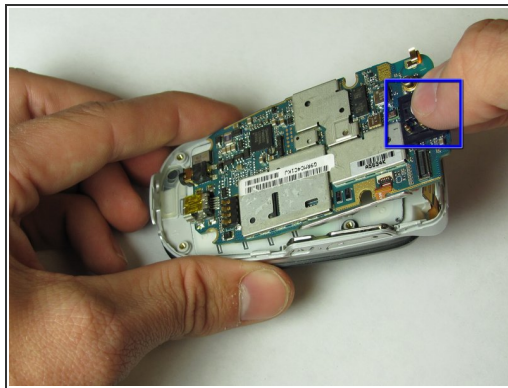
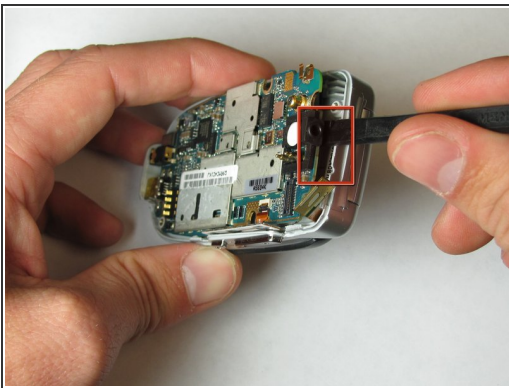
- Slide the plastic opening tool along the groove, until the entire logic board cover has been opened.
- Remove logic board cover and set aside.

## Step 8



- Use the Spudger to detach the screen wire from the logic board.

## Step 9



- Insert the Spudger into the slot on the top of the logic board.
- Gently pry to loosen the top of the logic board.
- ⓘ Note: The logic board may initially seem glued to the phone. It is not glued but does require input of force to remove.
- Grab the top of the logic board and pull at an angle to remove.

To reassemble your device, follow these instructions in reverse order.