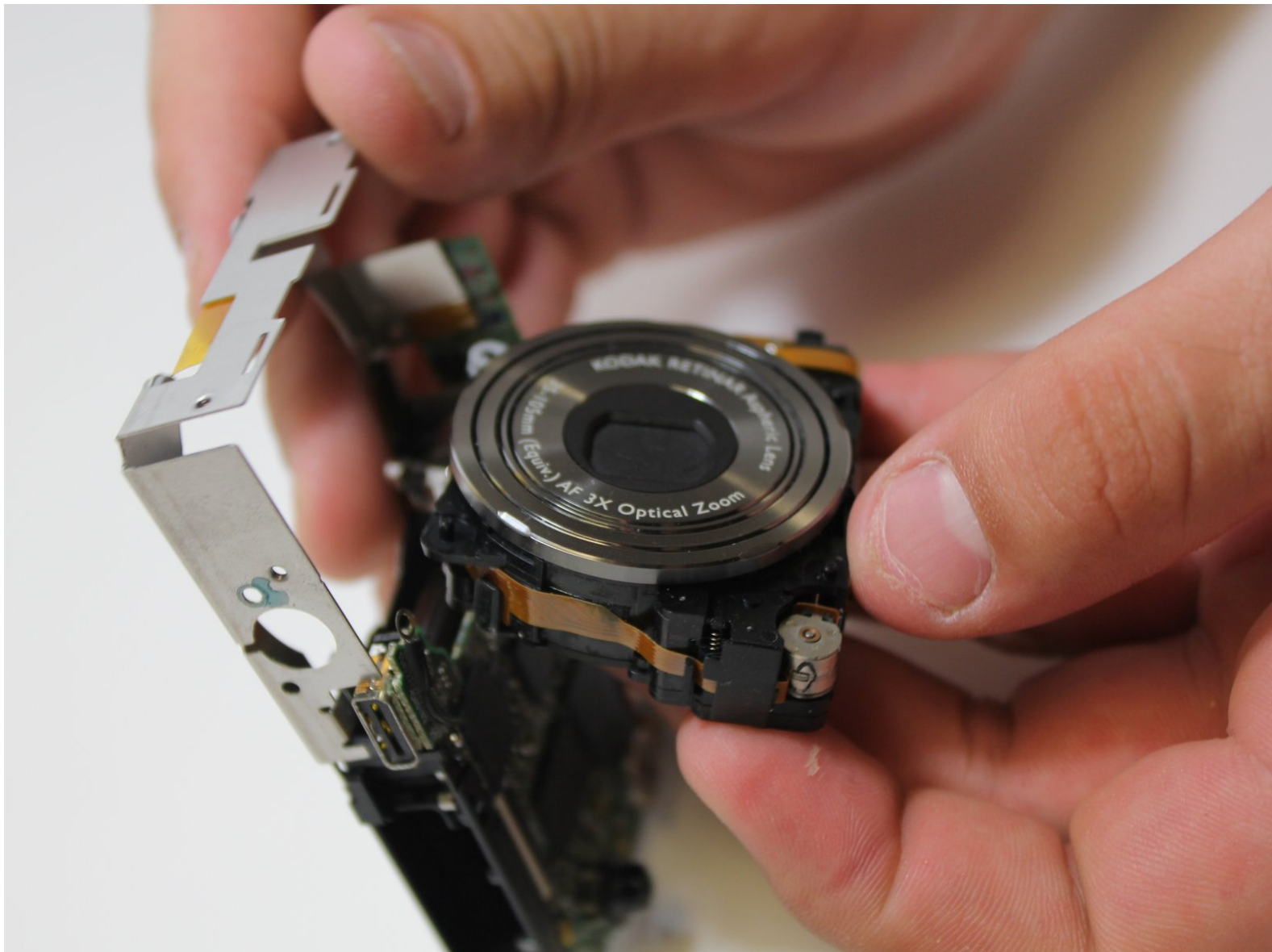




Kodak EasyShare M2008 Lens Replacement

How to safely and properly remove and replace the lens from your device.

Written By: Brian





TOOLS:

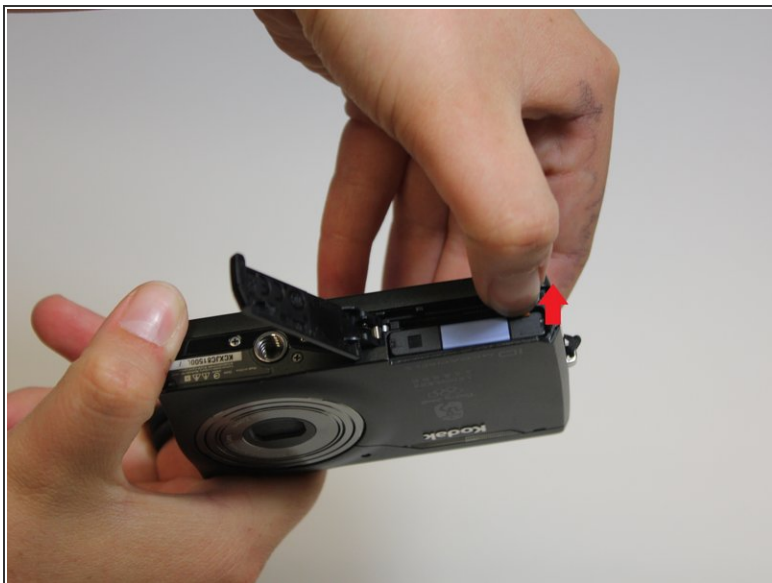
- [Phillips #0 Screwdriver](#) (1)
- [iFixit Opening Tools](#) (1)

Step 1 — Battery



- Place thumb firmly on battery cover.
- Slide thumb right, the cover should follow and pop up.


Step 2



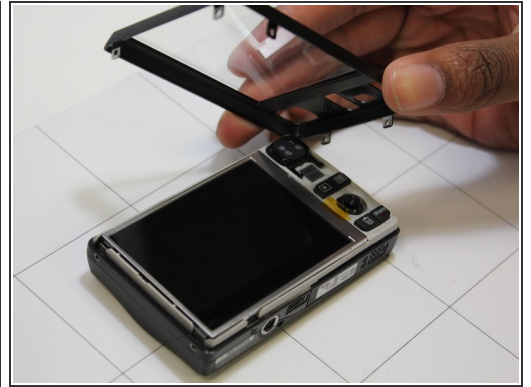
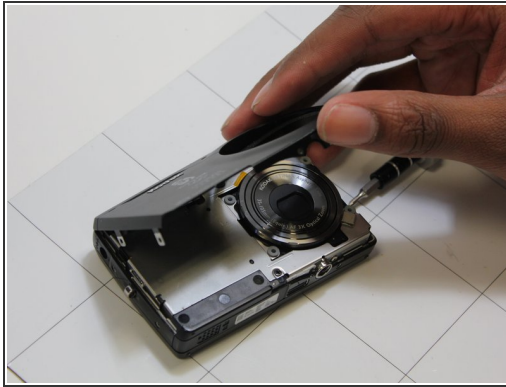
- Place thumb on orange tab and pull back towards screen.
- The battery should pop up.
- Gently lift battery out.

Step 3 — Device Casing



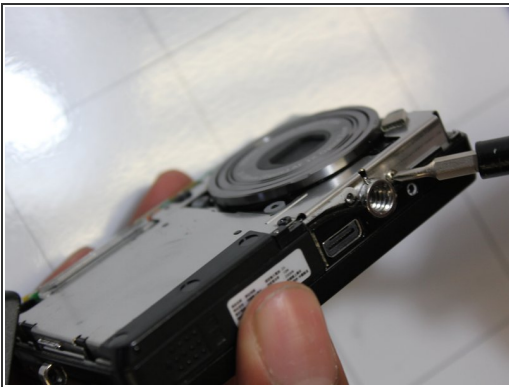
- Remove screws from along outer edge of casing.
- There are 6 screws in total.
-  Righty tighty, lefty loosey!

Step 4



- Gently lift off front and back casing.

Step 5



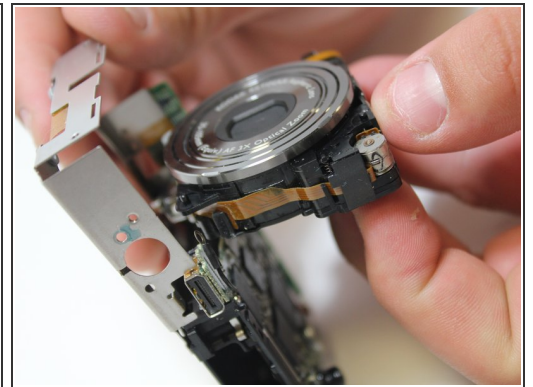
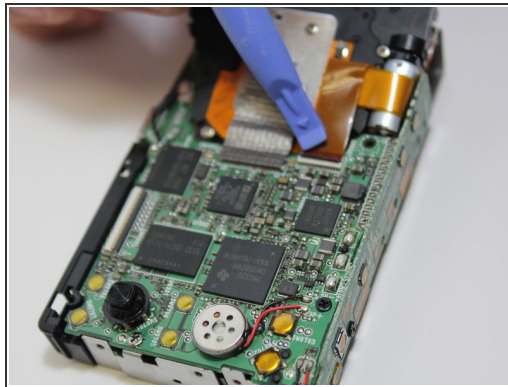
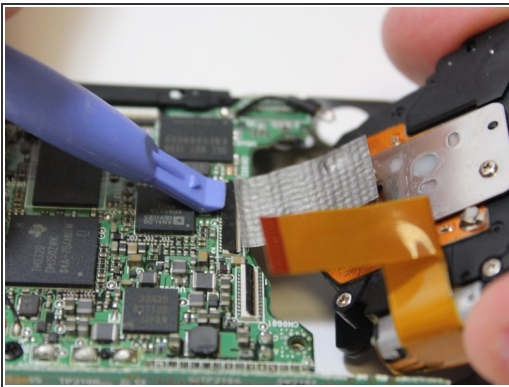
- Remove screws along side.
- Gently peel off side casing.

Step 6 — Lens



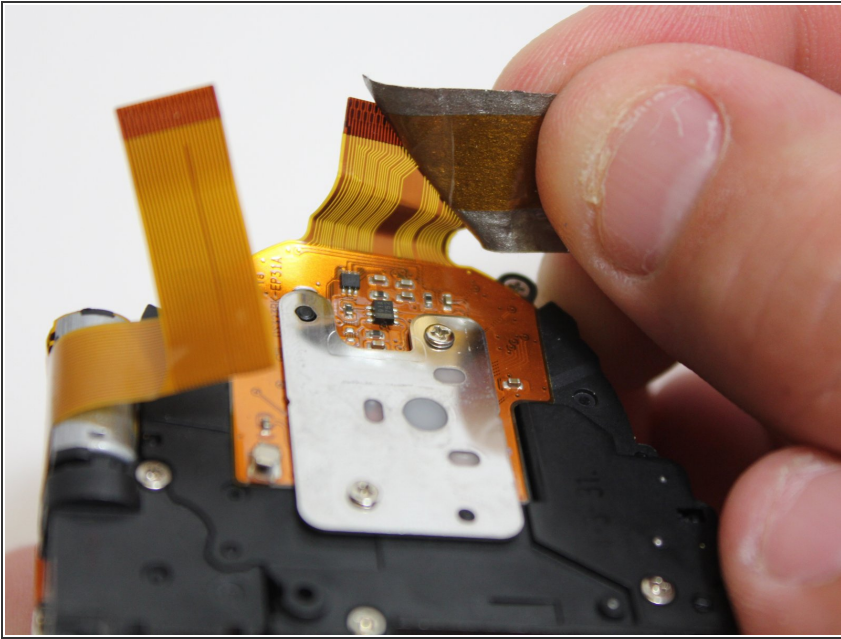
- Remove screws from front silver panel.

Step 7



- Lift up ribbon cable fastener with blue plastic opening tool.
- Gently pull out lens.

Step 8



- To place new lens, peel off silver tape before inserting ribbon cable into proper slot.

To reassemble your device, follow these instructions in reverse order.