



Epson Stylus NX230 Scanner Motor Replacement

Replace the motor that powers the scanning mechanism on your Epson Stylus NX230 printer.

Written By: Kimberly Pugel



INTRODUCTION

The scanner motor powers the physical movement of the scanning mechanism. This mechanism moves across an entire document, copying its contents, so that the printer can scan, fax, and/or print a copy of the original document. This motor may stop working due to a broken fuse or faulty connection and ultimately may need to be replaced.



TOOLS:

- [iFixit Opening Tools](#) (1)
 - [Phillips #2 Screwdriver](#) (1)
-

Step 1 — Scanner Motor



- ⚠ Check that the printer is unplugged to prevent shock.
- Turn the printer so the front buttons are facing away from you.

Step 2



- Locate the 3mm Phillips #0 screw in the top left corner of the printer.
- Remove the screw using a Phillips head screwdriver.
- ⓘ Store the screw in a safe place where you can access them later.

Step 3



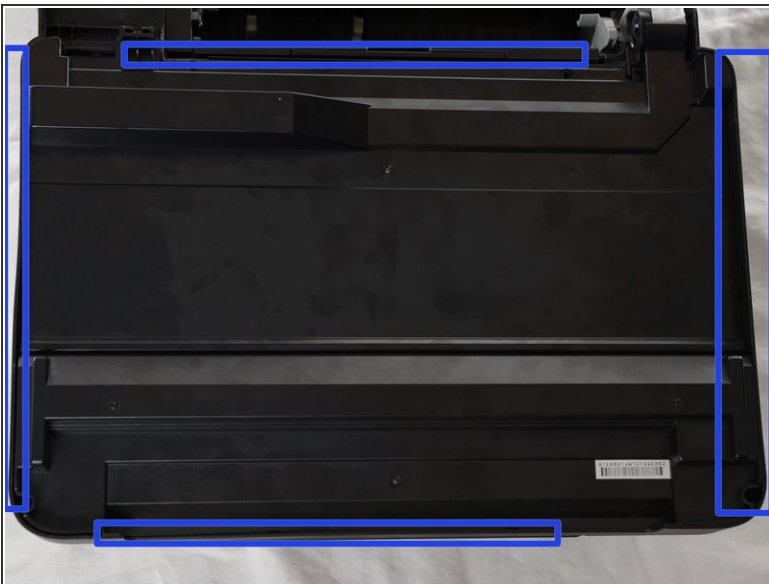
- Flip the top of the printer up so that you can see the inside of the printer.
- There is a white ribbon cable in the right top corner of the printer.
- Make sure that the white ribbon does not come detached from the right side of the printer.

Step 4



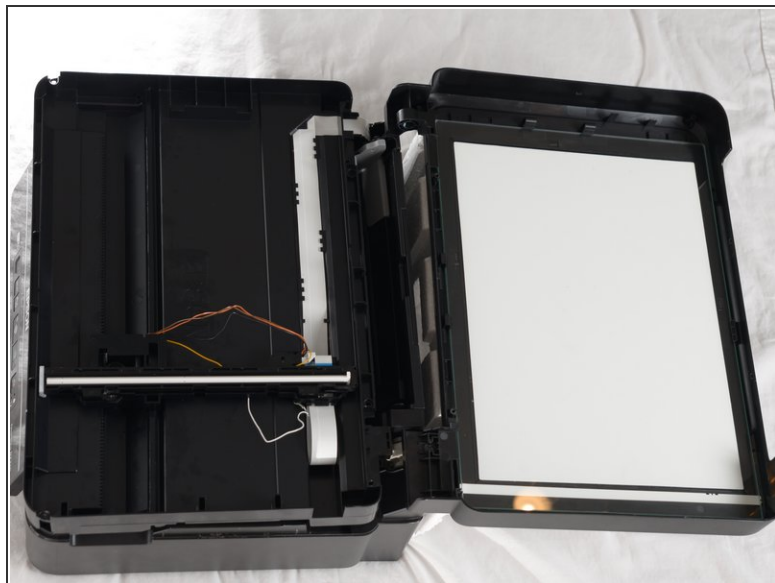
- Lay the scanner face up so you can access the under side, and place something, such as a piece of Styrofoam, underneath of it so that the white tape does not become detached.
- Locate the four 3mm Phillips #2 screws along the edge, and remove all of them.
- ⓘ Store the screws in a safe place where you can access them later.

Step 5



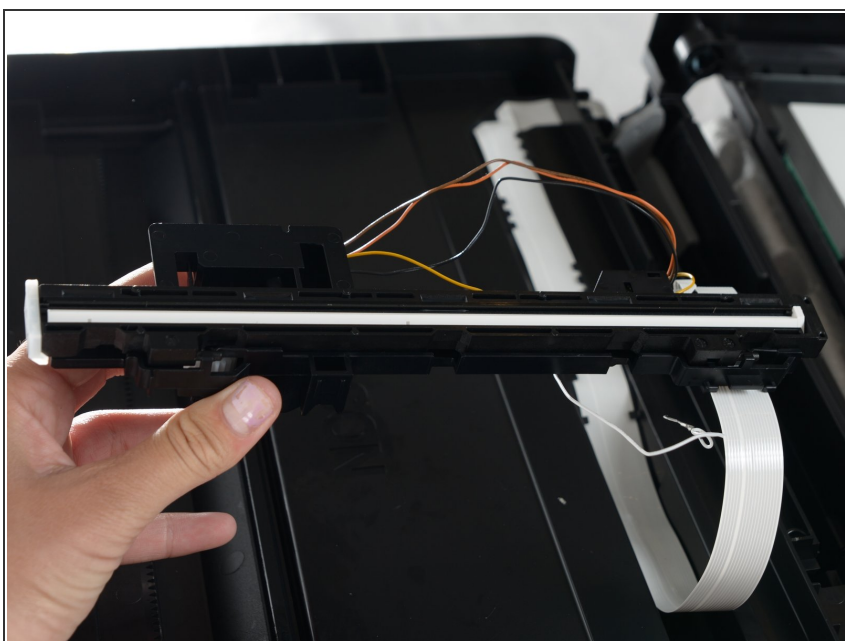
- Locate the seam on between outer shell of the printer and the inside of the printer.
- Starting from the top of the printer, use the plastic opening tool to slowly pry the scanner apart along the seam.

Step 6



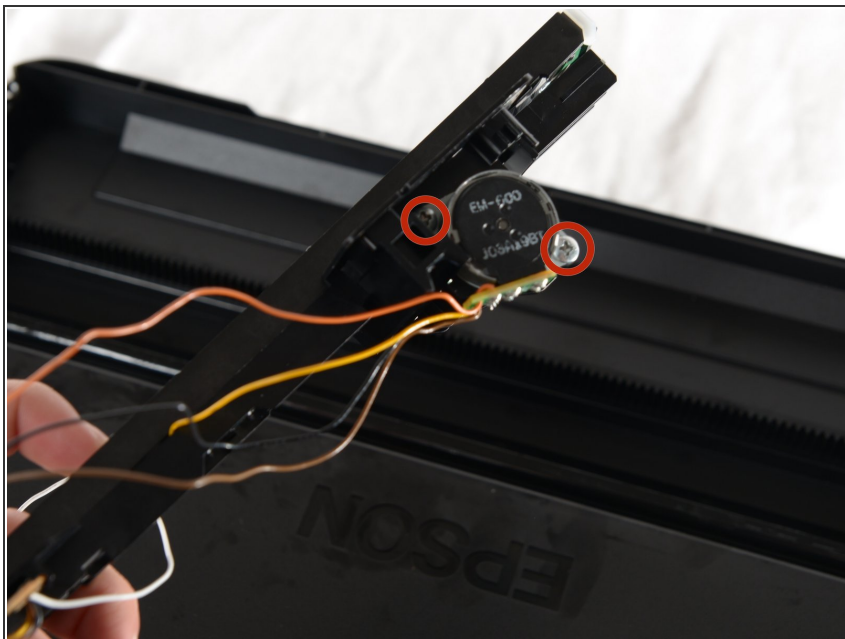
- Detach the bottom of the scanner.
- Flip the bottom of the scanner over so that it rests on top of the printer.
- ⓘ This gives you access to the motor.

Step 7



- Gently lift the scanner bar in order to remove it from the scanner.
- Detach the white ribbon cable from the scanner bar.

Step 8



- Remove the two 3mm Phillips #2 screws on the underside of the scanner bar attached to the silver motor.
- Remove the motor from the scanner bar by gently pulling the motor upwards.

To reassemble your device, follow these instructions in reverse order.