



# Toshiba Portege M300 Motherboard Replacement

Summary: This guide will demonstrate how to remove an old and replace a Toshiba Portege M300 with a new motherboard.

Written By: Nicholas Phillips





## TOOLS:

- [Pro Tech Toolkit](#) (1)
-

## Step 1 — Motherboard



- Place laptop upside down.
- Rotate so the battery side is facing away from you.
- Locate the twelve screws on the bottom of the laptop.
- Using the correct Phillips head screwdriver remove the twelve screws from the bottom of the laptop.

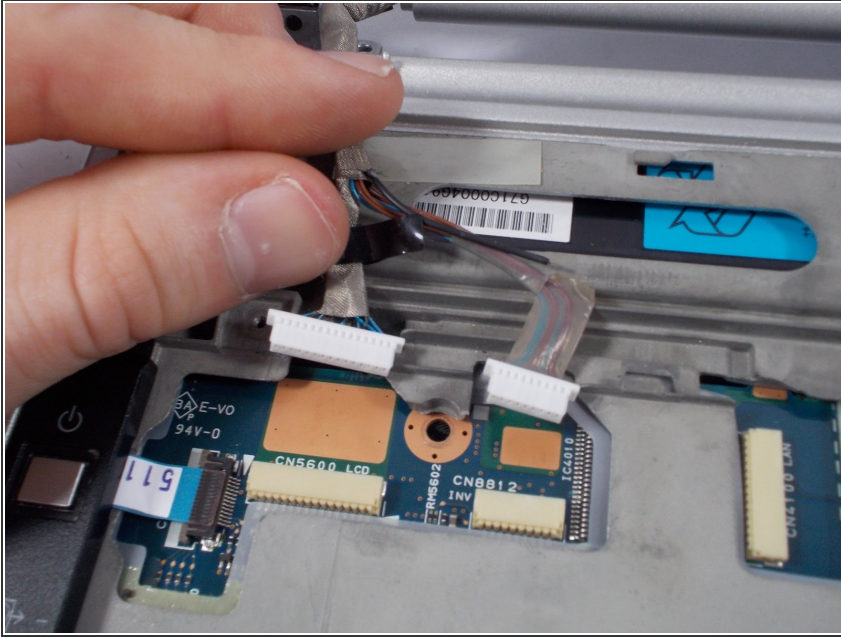
## Step 2



- Locate the two screw covers and screws that can be found underneath the screen of the laptop.
- Once located remove the screw covers and screws from underneath the screen by using the correct sized Phillips head screwdriver.
- The screen should readily detach from the laptops body.

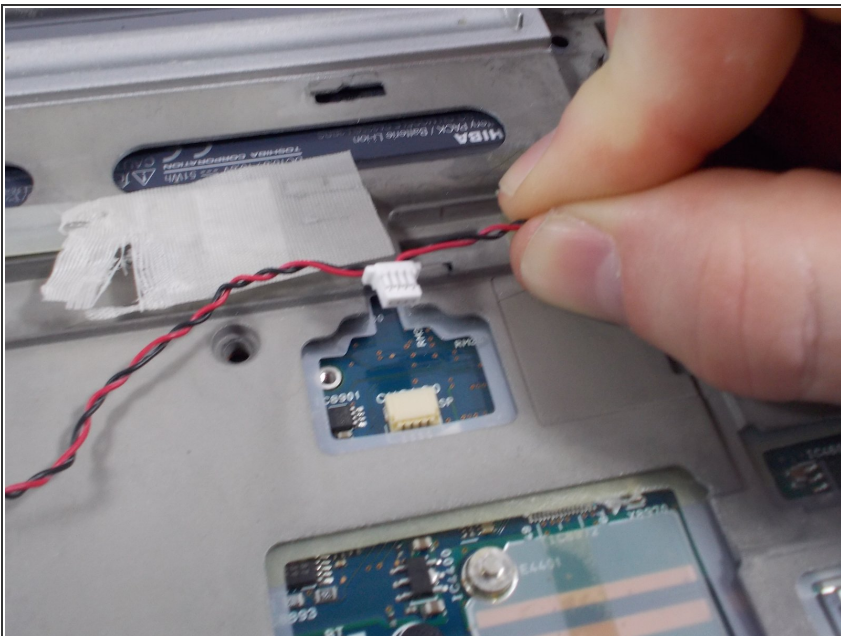


### Step 3



- Locate the wires that connect the screen to the laptops body. (They are located at the bottom left side of the screen.)
- Lift up the black protective cover that the wires lie under.
- With one hand holding the black cover up, with free hand carefully pull away the wires, removing them from the laptop's body.

### Step 4



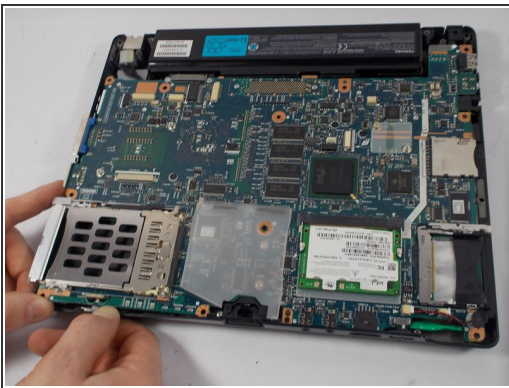
- Underneath the black protective cover locate the wires that are for the speakers.
- With one hand holding the black cover up, with free hand carefully pull away the speaker wires, removing them from the laptop's body.

## Step 5



- Close laptop.
- Grip the left and right sides of the top side of the laptop. (Silver portion).
- Lift gently with both hands upward.
- Top portion should disengage from the bottom half of the laptop. (Black portion).

## Step 6



- With fingers scale the sides of the motherboard and pull back tabs that are holding the motherboard in place to the laptop.
- Once all tabs are pulled back the motherboard should easily be able to be removed from the bottom half of the laptop.

To reassemble your device, follow these instructions in reverse order.