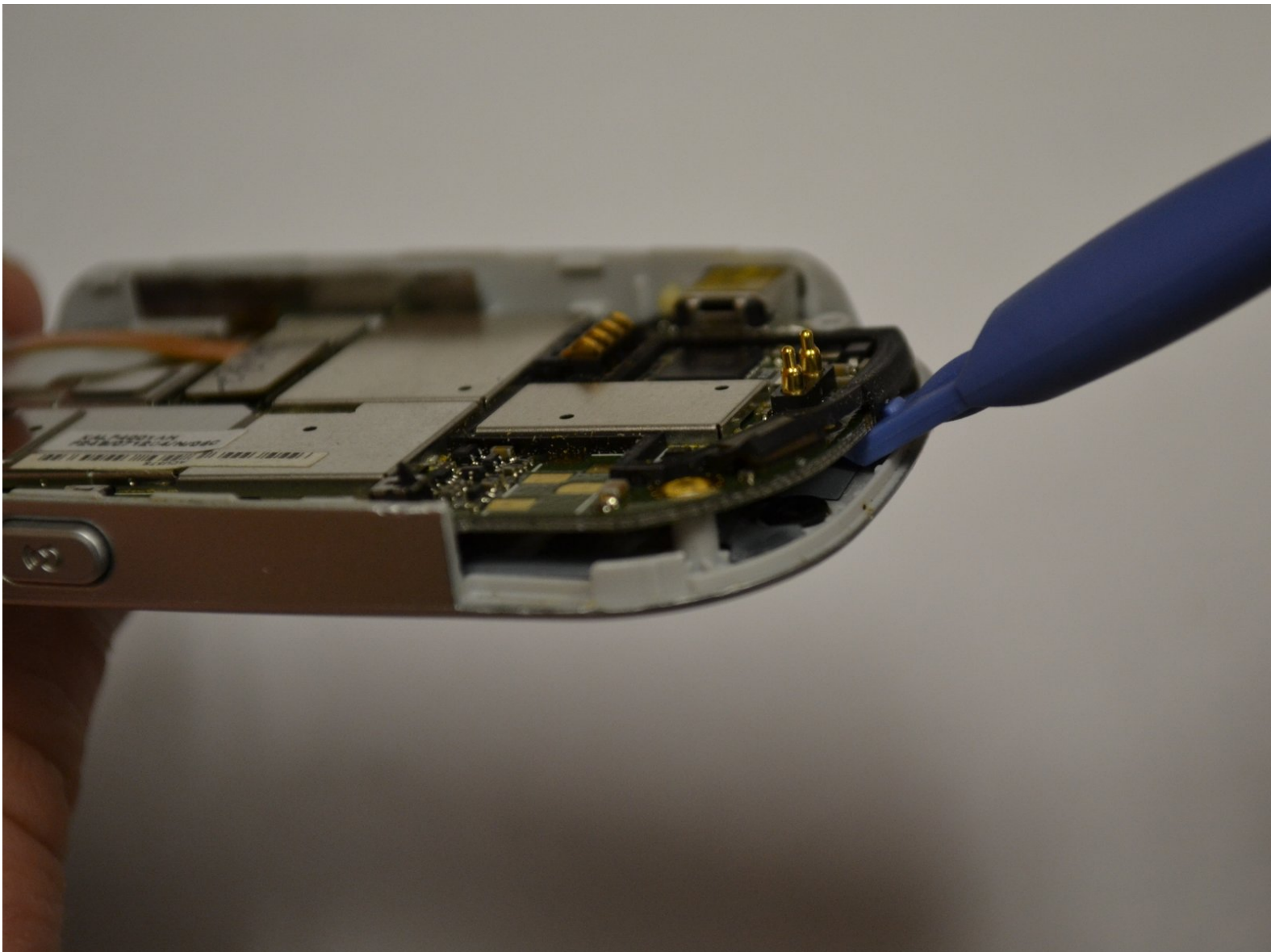




Motorola W315 Circuit Board Replacement

This guide will show how to access and replace the circuit board in the Motorola W315.

Written By: Jacob Gray

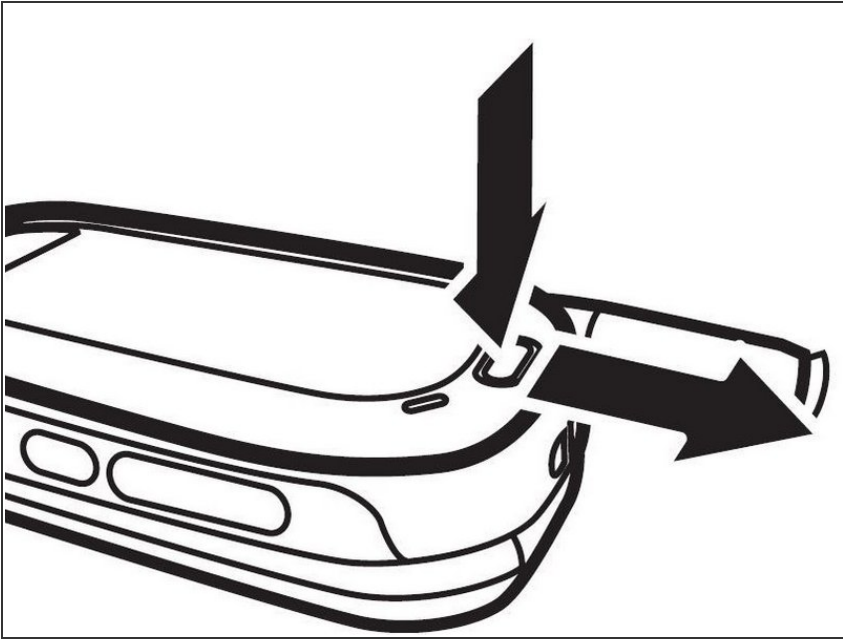




TOOLS:

- [T6 Torx Screwdriver](#) (1)
- [iFixit Opening Tools](#) (1)
- [64 Bit Driver Kit](#) (1)

Step 1 — Battery



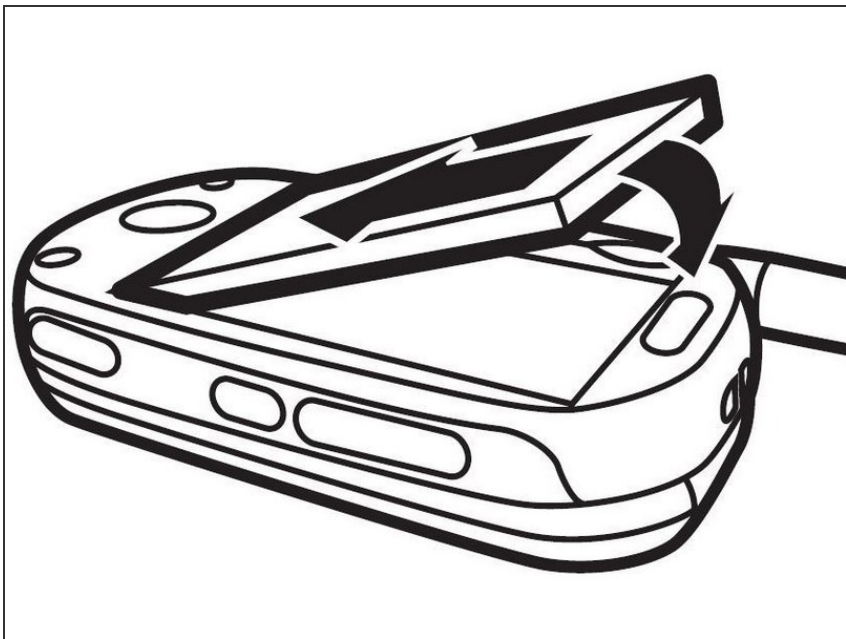
- Turn off the phone.
- Turn the device over.
- Remove the battery cover.

Step 2



- Insert thumb in the gap between the button and the battery and pry the battery upwards.
- Pull the battery out of the phone.

Step 3



- Insert the new battery.

Step 4 — Rear Case



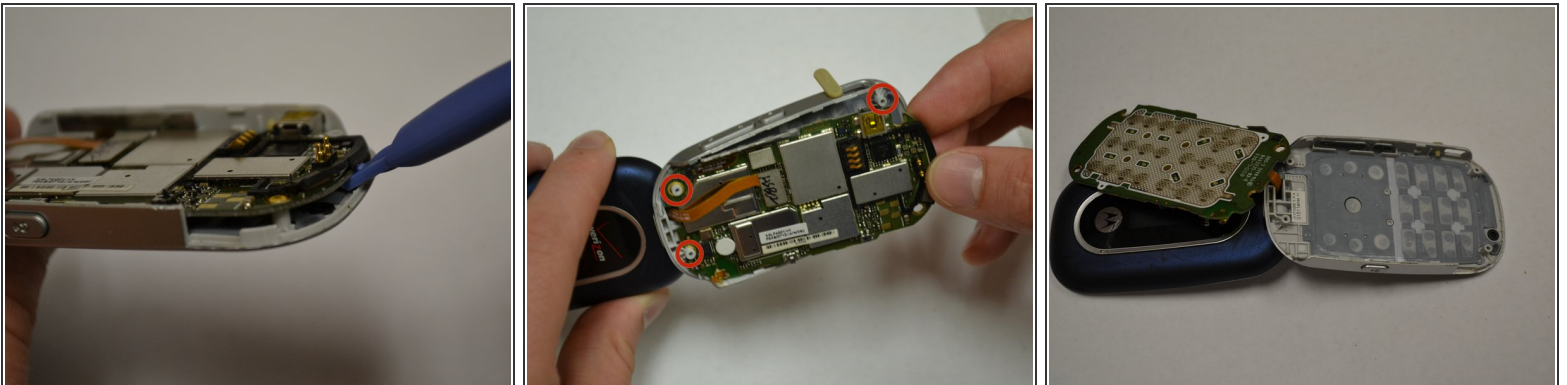
- Four 5 mm screws are visible (circled in red).
- Using the T6 tool, remove all four 5mm screws and set them aside.

Step 5



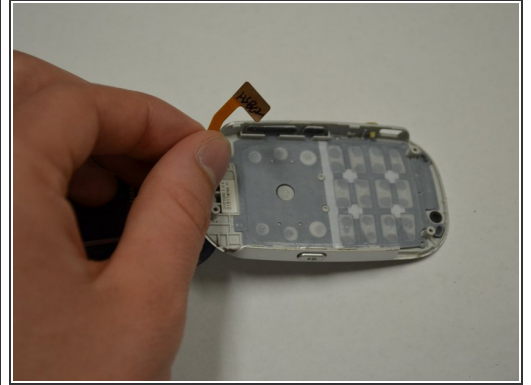
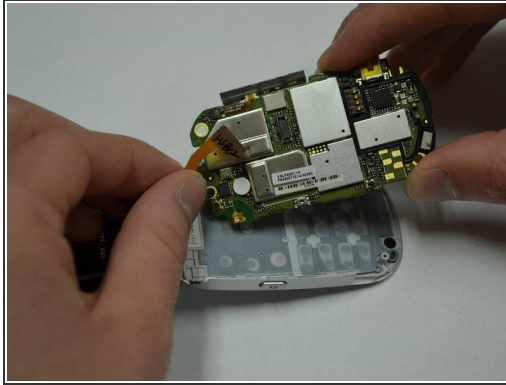
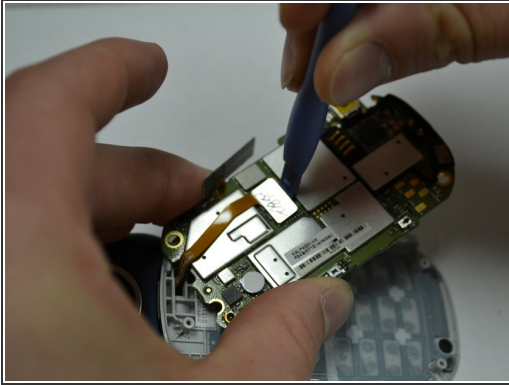
- Insert the plastic opening tool between the front and back panels of the lower half of the device.
- Slide the tool around the entire frame of the device until it has loosened.
- Remove the back of the device.

Step 6 — Circuit Board



- Using the plastic opening tool, gently lift the circuit board off of the four gray pegs that it rests upon.

Step 7



- Use the plastic opening tool to remove the chip connected by magnetic strip to the screen.
- Remove circuit board.

To reassemble your device, follow these instructions in reverse order.

Information on recycling/disposing of your electronic waste is located under Additional Information on the device page.