



Written By: Aaron





TOOLS:

- [Screwdriver](#) (1)
-

Step 1 — Fan



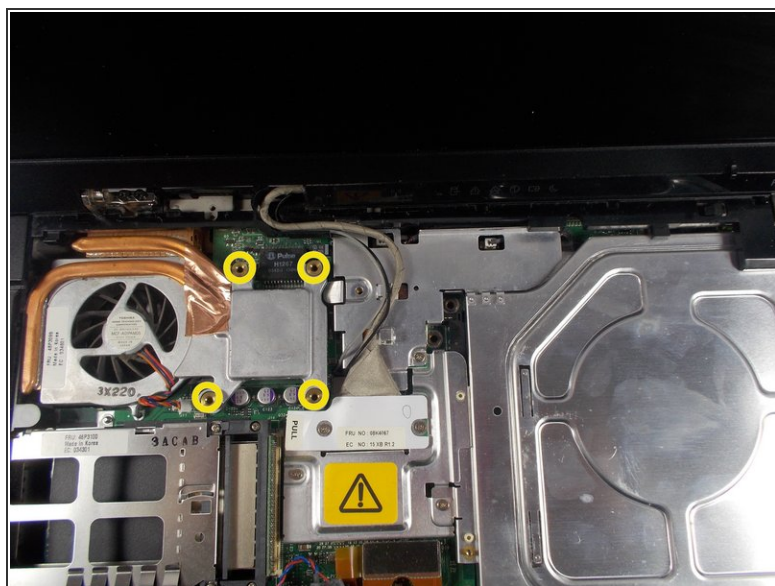
- Remove the screws shown. These screws are connected to the keyboard.

Step 2



- Take the spudger tool, go around the edges of the oranges boxes shown, and pop off those two sections. Then, go around the edges of the keyboard, and it should slide off.

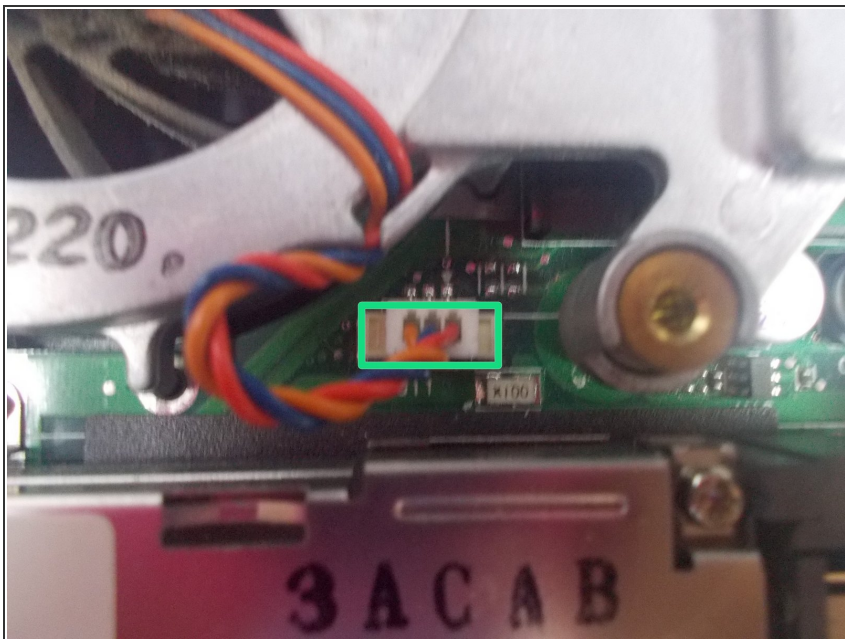
Step 3



⚠ Lift and move keyboard aside to get to screws. Try not to remove the attached ribbon.

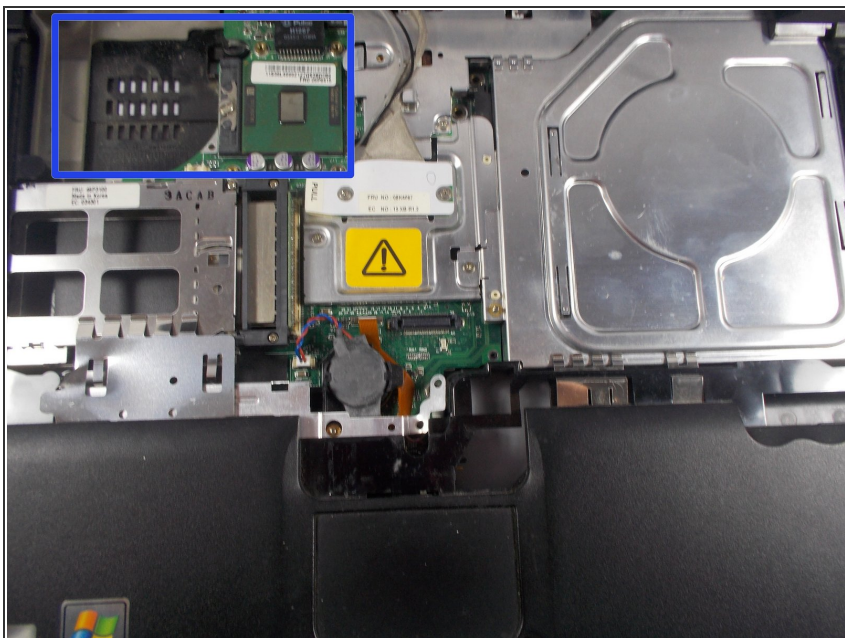
- Remove the screws shown. These screws will allow you to loosen the fan. Be careful since there is still another part connected.

Step 4



- Carefully unplug the highlighted part, and your fan should come straight out.

Step 5



- The section in blue is where your new fan will go.

To reassemble your device, follow these instructions in reverse order.