



Sega Game Gear Screen Replacement

A guide to installing a replacement screen on a...

Written By: Lauren Thurston



INTRODUCTION

A guide to installing a replacement screen on a Sega Game Gear.

TOOLS:

Gamebit 4.5mm (1)

Bit available in the 64 bit kit

Phillips #00 Screwdriver (1)

Step 1 — Battery



- Place your device upside down and locate the two battery compartments.

Step 2



- Press on the tabs at the bottom of the battery covers then lift up to remove.
- Remove batteries if they are present.

Step 3 — Case



- Remove the following screws:
 - Six Phillips screws
 - One 4.5 mm Gamebit screw

Step 4



- Use [tweezers](#) to take all other screws out.

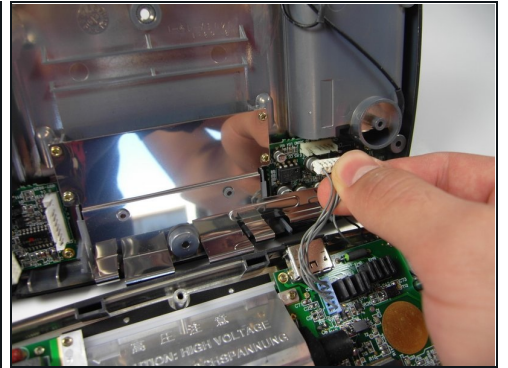
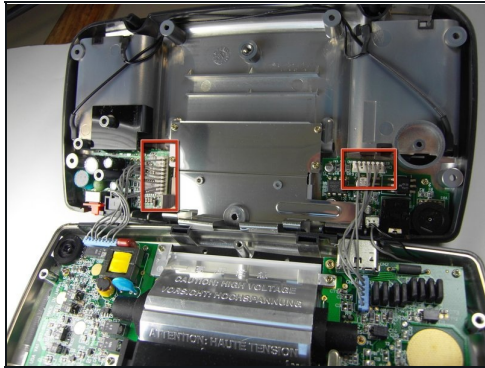
Step 5



- Gently open the case by unfolding it over the top of the Sega Game Gear.

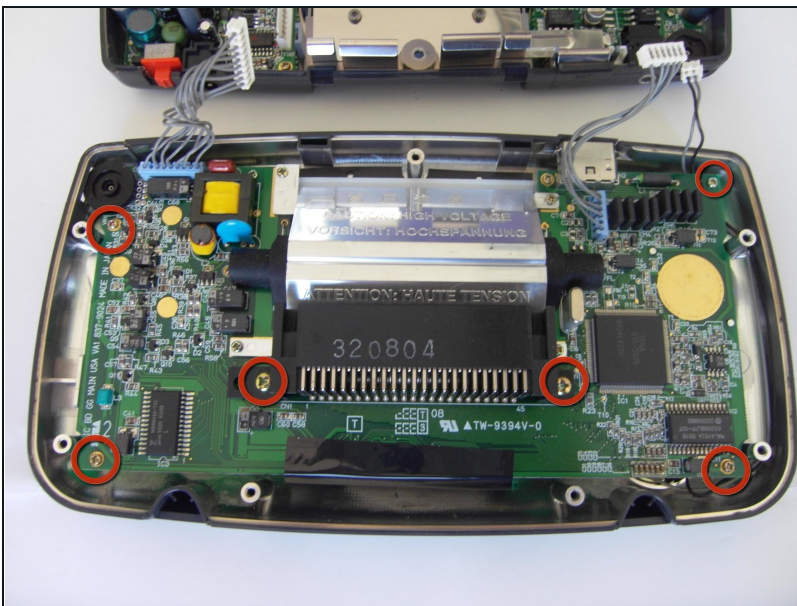
⚠ Do not pull the back of the case away, as cables are connected between both sides.

Step 6



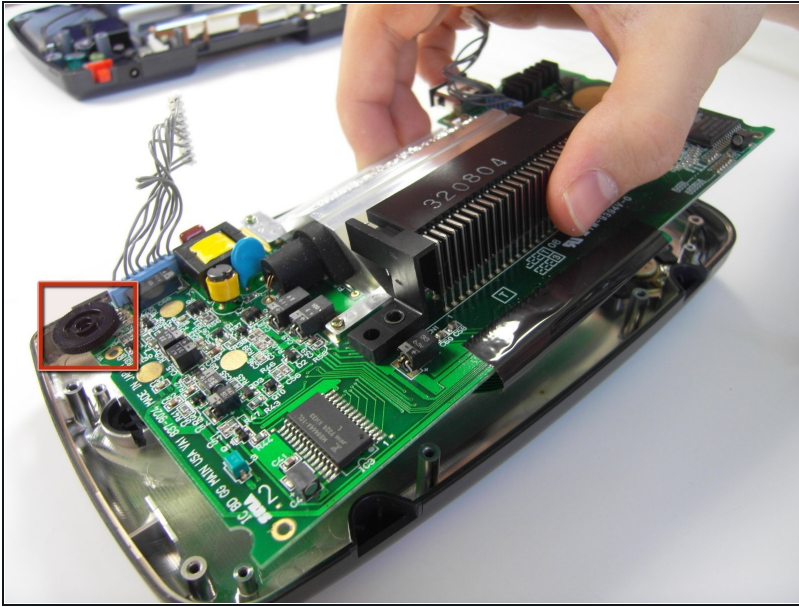
- Carefully unplug the 2 white-tipped connectors on the top cover.

Step 7 — Screen



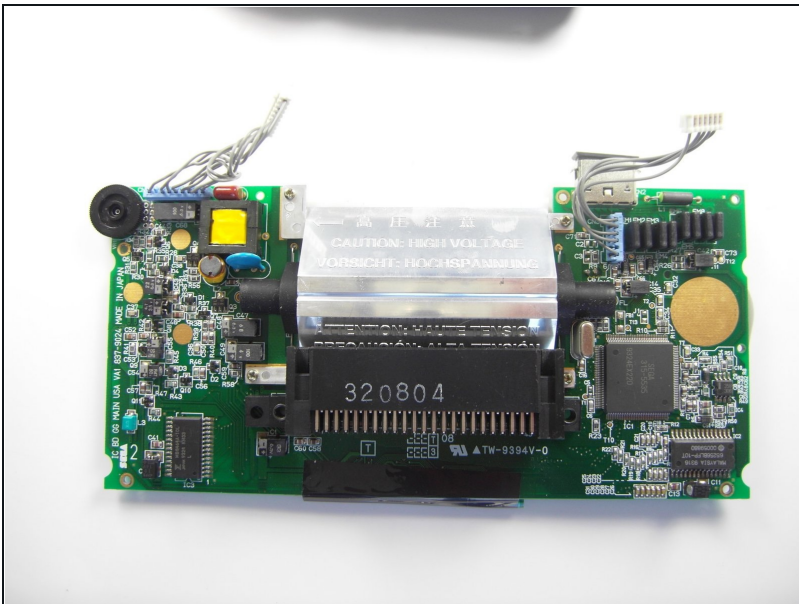
- Unscrew all the marked screws.

Step 8



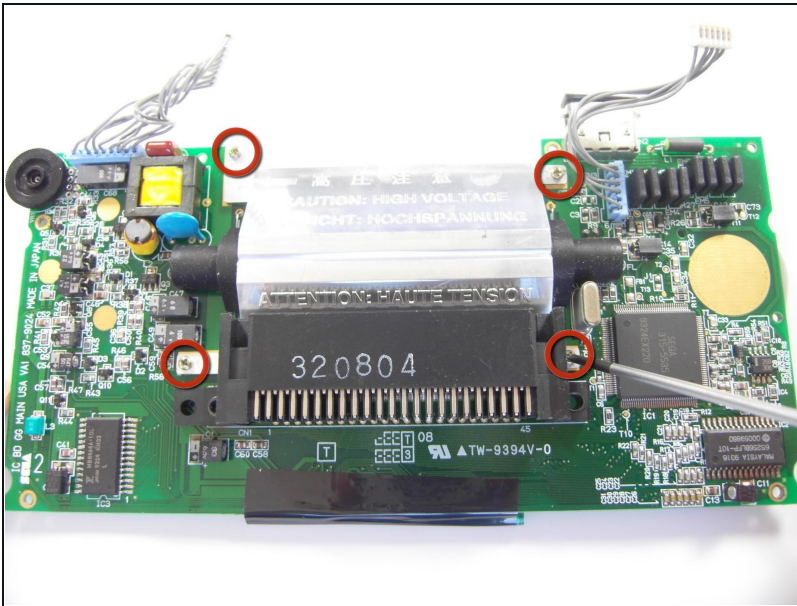
- Slide the logic board out from under the circular black fastener at the top-left corner of the case.

Step 9



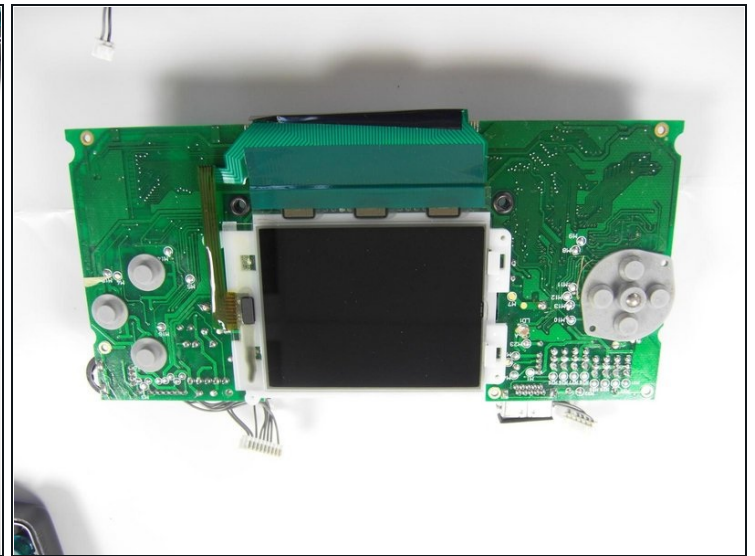
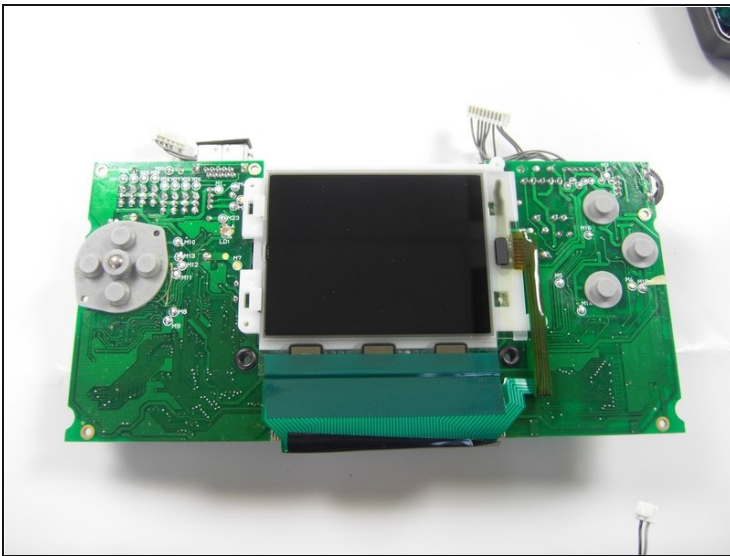
- Place the board onto a flat surface.
- ⓘ Small plastic buttons may fall off during this process, save them in a container or a place where they could be found later on.

Step 10



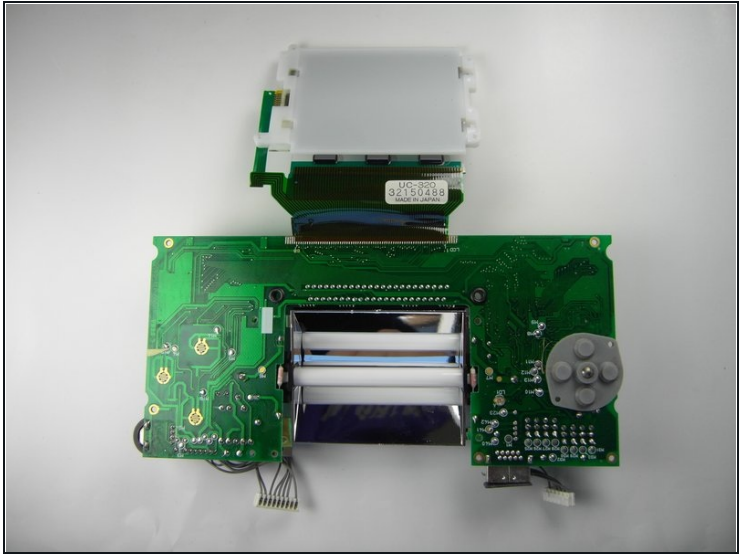
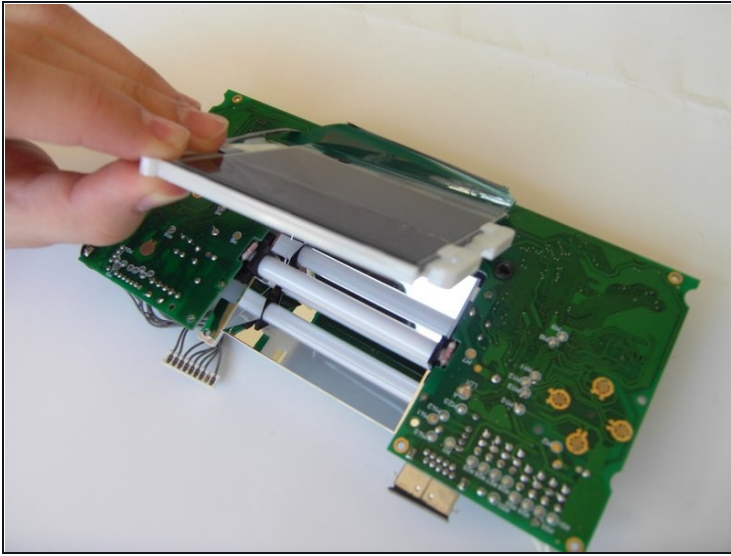
- Unscrew the marked screws.
 - Flip the board, having its back facing up.
- ⚠ Hold onto the screen in the back, as it will flip open if not held onto.

Step 11



- Make sure the screen is towards the bottom, as indicated in the second picture.

Step 12



- Gently open the screen up.
- The screen will not come out all the way since it is glued onto the top side.

To reassemble your device, follow these instructions in reverse order.