



Sony Vaio VGN-FS640 Keyboard Replacement

How to replace the keyboard on a Sony Vaio VGN-FS640 laptop.

Written By: Michael Maravick



INTRODUCTION

This guide will show you how to remove the keyboard from your Sony Vaio VGN-FS640 laptop.



TOOLS:

- [Phillips #00 Screwdriver](#) (1)
 - [Spudger](#) (1)
-

Step 1 — Battery



- Lay the closed laptop on its screen so the bottom is facing towards you.

Step 2



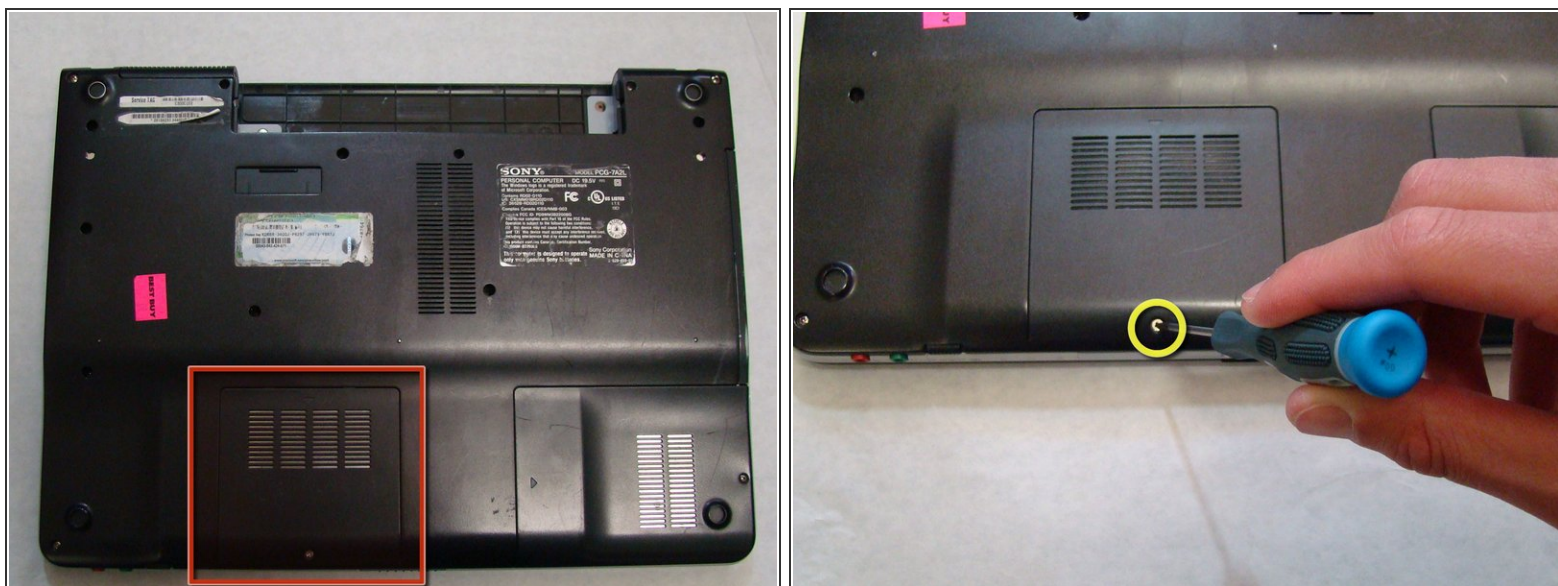
- Push both latches towards the center of the battery.

Step 3



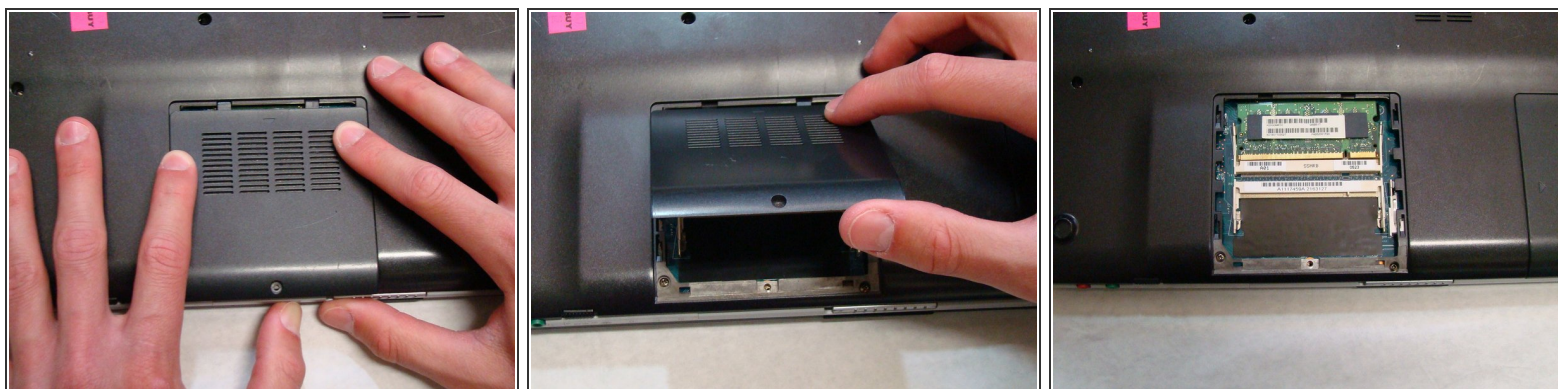
- Remove the battery by pushing it away from the laptop.
- Set the battery away from the laptop.

Step 4 — RAM Cover



- With the bottom of the laptop facing up, locate the RAM cover.
- The RAM is covered by the panel with four columns of vents.
- Locate the screw (Length: 4.8 mm) holding down the panel, which is near the edge of the laptop. Unscrew it with your phillips #0 screwdriver.

Step 5



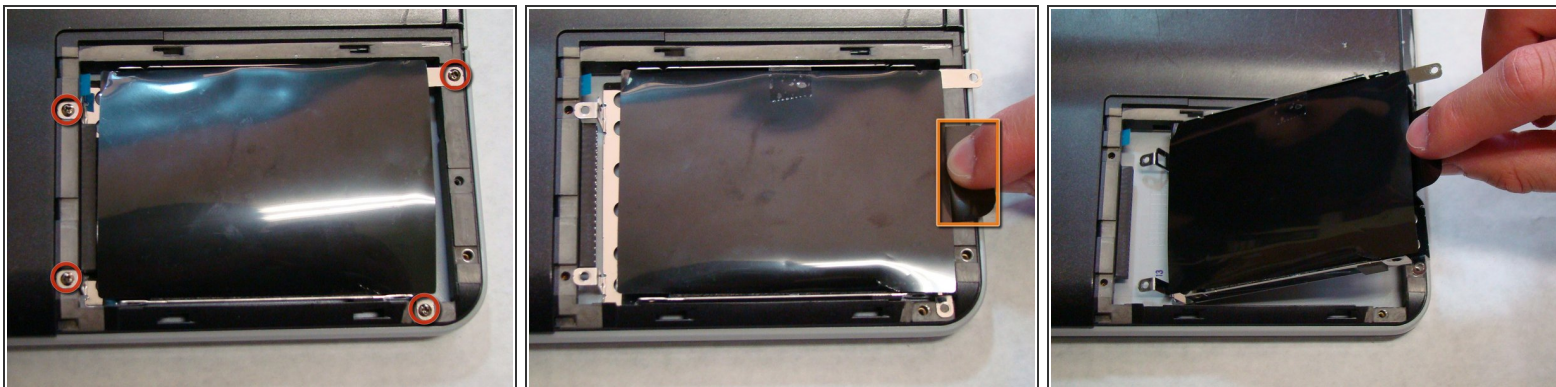
- Use your fingers to slide the cover away from the laptop. (It will only slide a few millimeters)
- Once the panel is out of its locked position, it can be lifted out without any resistance.

Step 6 — Hard Drive



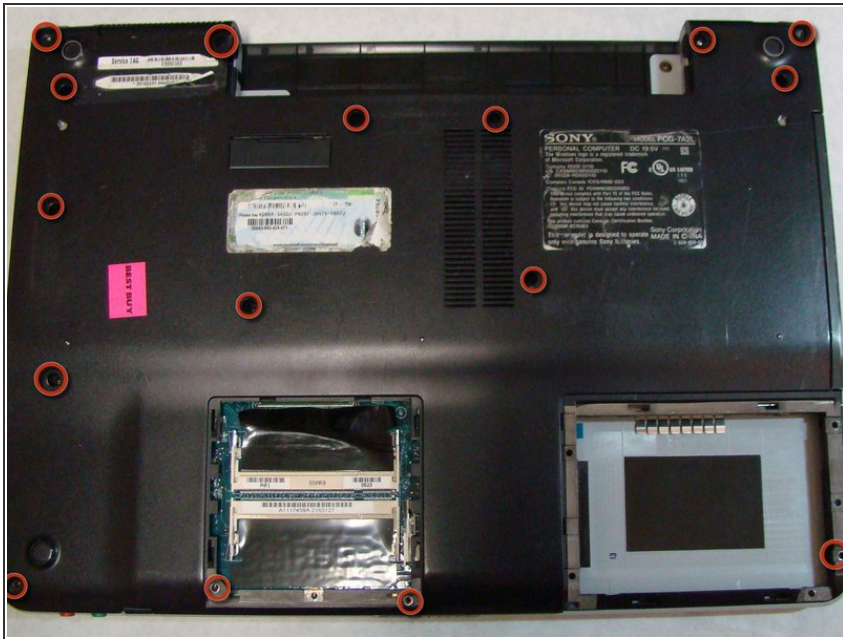
- Locate and remove the screw (Length: 7.7mm) for the hard drive cover.
- Slide the cover until it is free from the laptop case.
- Lift the cover to remove.

Step 7



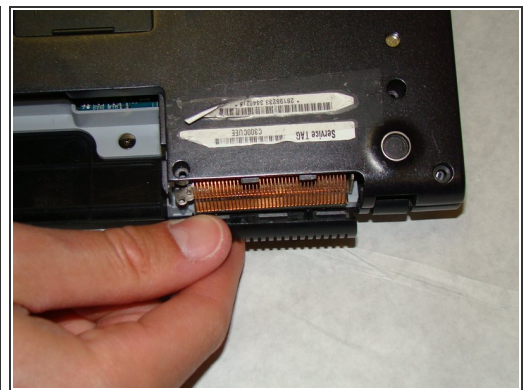
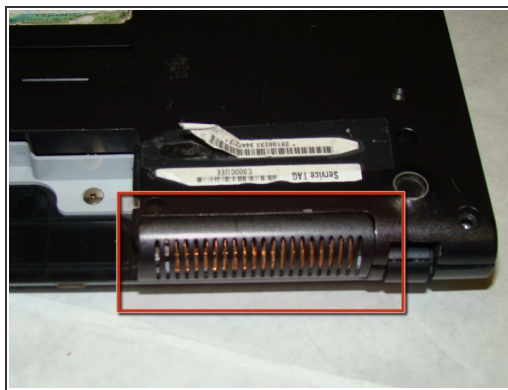
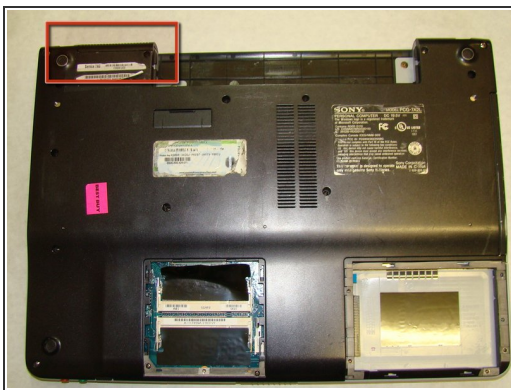
- Locate and remove the four screws (Length: 7.7mm) holding the Hard Drive tray in place.
- Using the tab on the tray, slide the Hard Drive away from the main body of the laptop.
- The Hard Drive should now be disconnected.
- Lift the drive out with the tab on the tray.

Step 8 — Back Cover



- Locate the screws highlighted here. There are 16 total.
- Using a Phillips #0 screwdriver, remove the screws (Length: 6.8mm) and place them on a tray for later use.

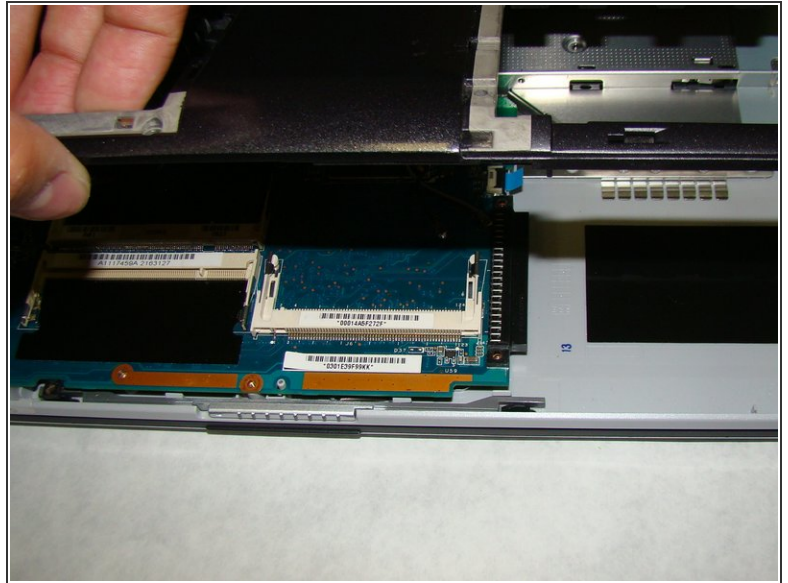
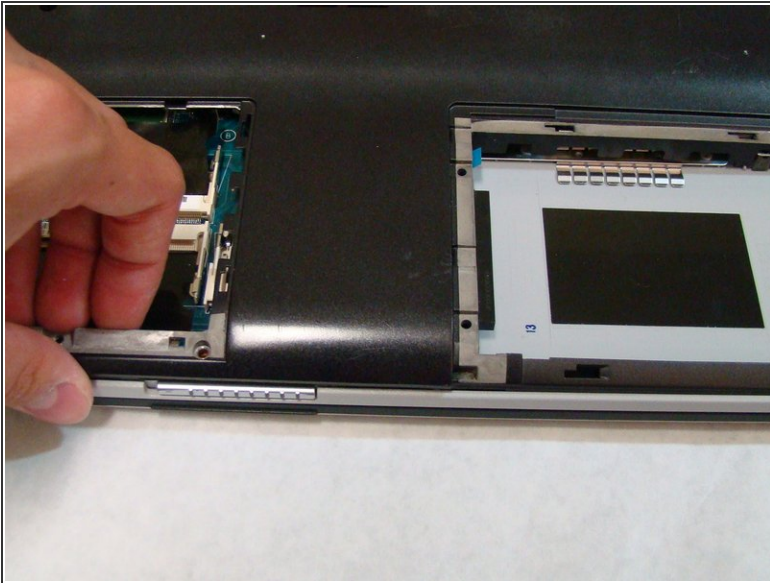
Step 9



⚠ Before you proceed, make sure you pay special attention to the way the small plastic part that covers the radiator fins is held in place. You will need to know how it attaches when you reassemble the laptop.

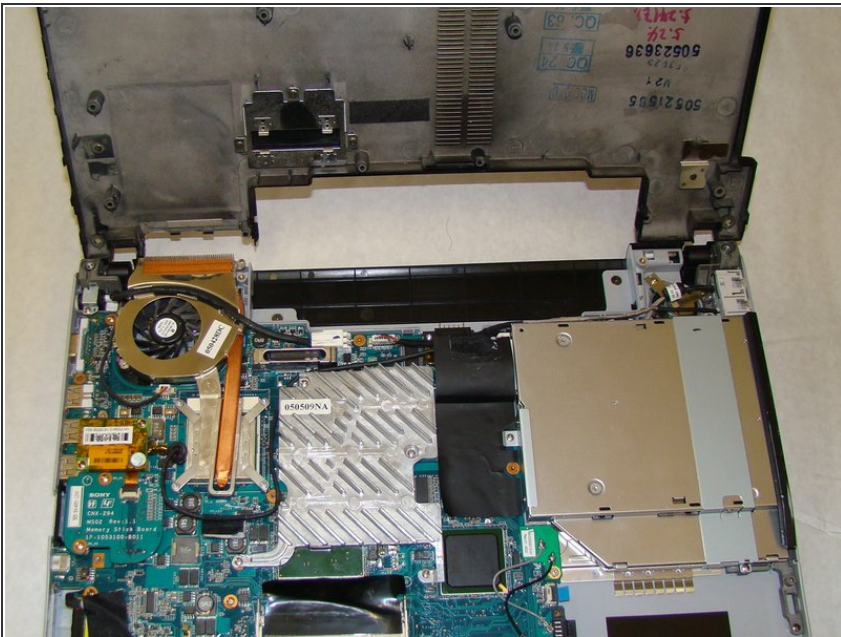
- You do not need to actually remove the part at this time. It is held in place by the rest of the back cover and will fall off when back cover is removed in the next step.

Step 10



- After removing the screws, use your fingers to lift the back cover off the laptop.

Step 11



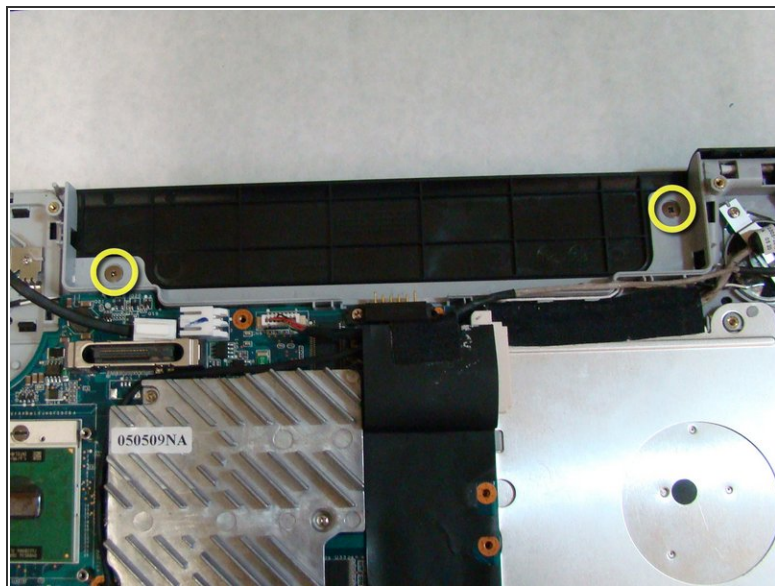
- Remove the back cover and place it somewhere safe so you can locate it later.

Step 12 — Keyboard



- After the back cover is removed, lay the laptop on a flat surface, with the bottom facing up.

Step 13



- To remove the keyboard, the speaker cover must be removed first.
- To do this, first remove the two screws (Length: 2.3 mm) highlighted in the picture.

Step 14



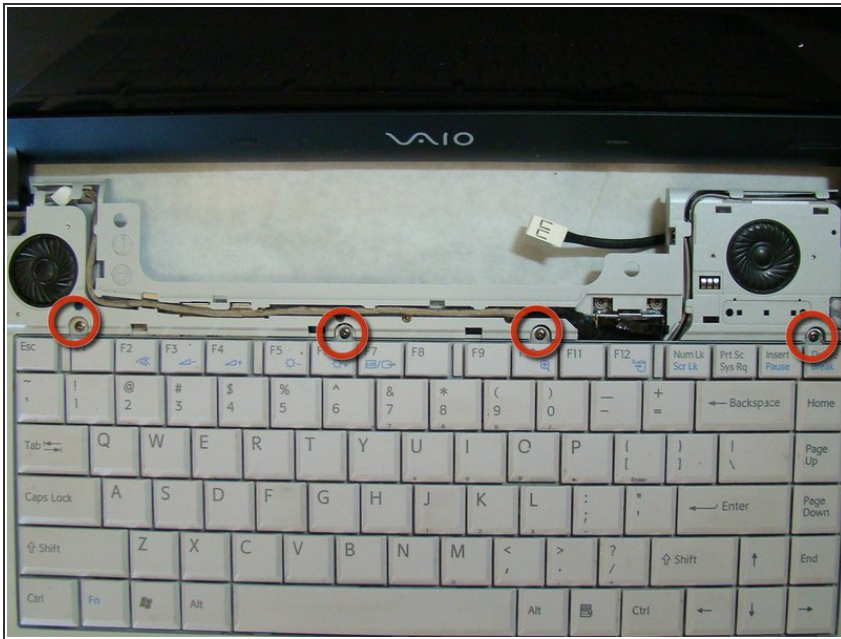
- After the screws are removed, flip the laptop over so the keyboard is facing up and move the screen to its upright position.

Step 15



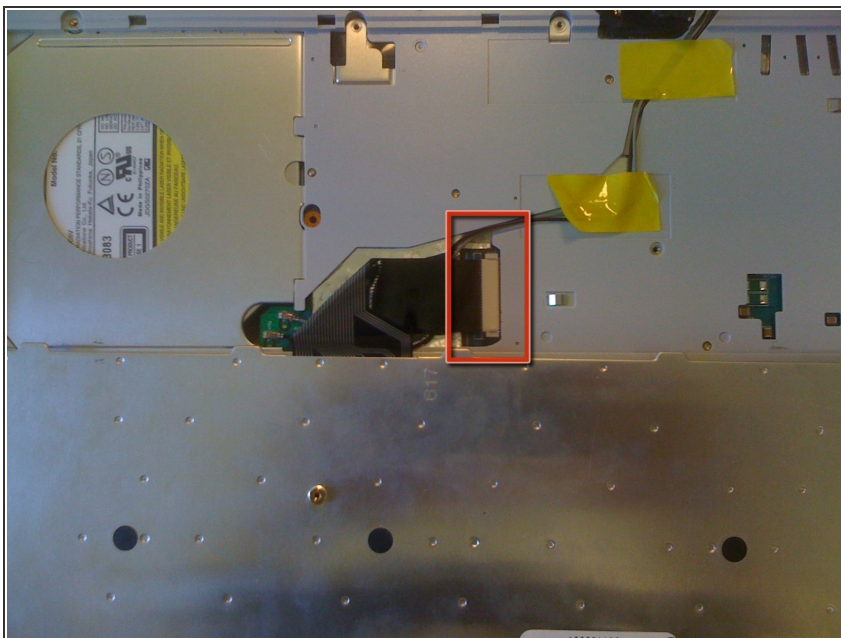
- To start removing the speaker cover, use your finger to lift up on the exposed corner of the black speaker cover, located near the bottom left corner of the screen.
- Slowly pull the speaker cover off from left to right, making sure it snaps off little by little.

Step 16



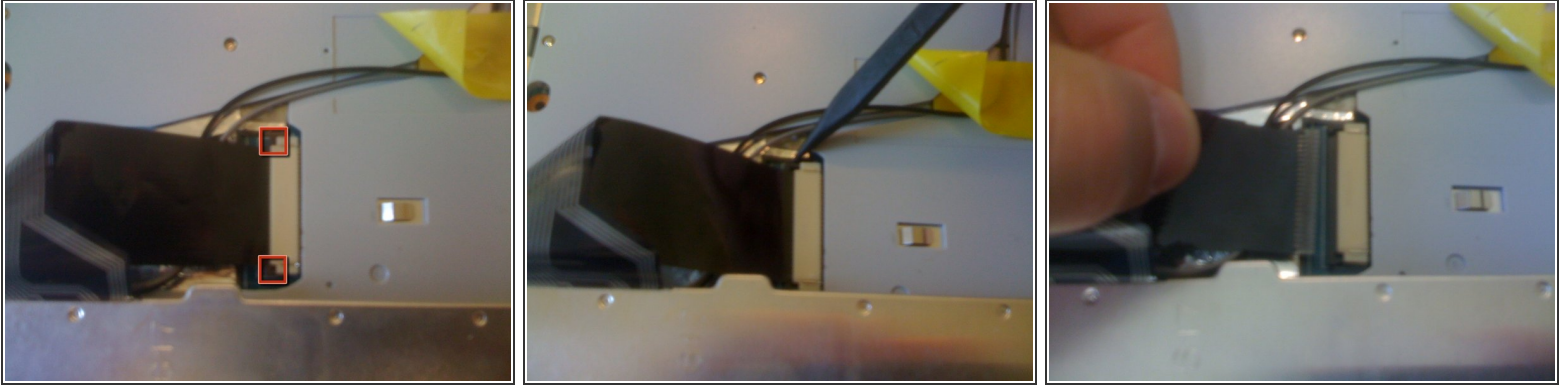
- After removing the speaker cover, remove the four screws (Length: 3.6 mm) with your Phillips #0 screwdriver that hold the keyboard in place.

Step 17



- Lift the free edge of the keyboard and fold it back to expose the ribbon that connects the keyboard to the laptop.
- ⓘ The large silver surface you see at the bottom of the picture is the back of the keyboard.

Step 18



- On each side of the white plastic connector, there is a tiny black tab that locks the ribbon into place.
- Use the sharp edge of a spudger to slide the black tabs away from the white plastic connector.
- Once the tabs have been extended away from the connector, the ribbon can be removed from the keyboard.
- The keyboard is now completely disconnected from the laptop.

To reassemble your device, follow these instructions in reverse order.