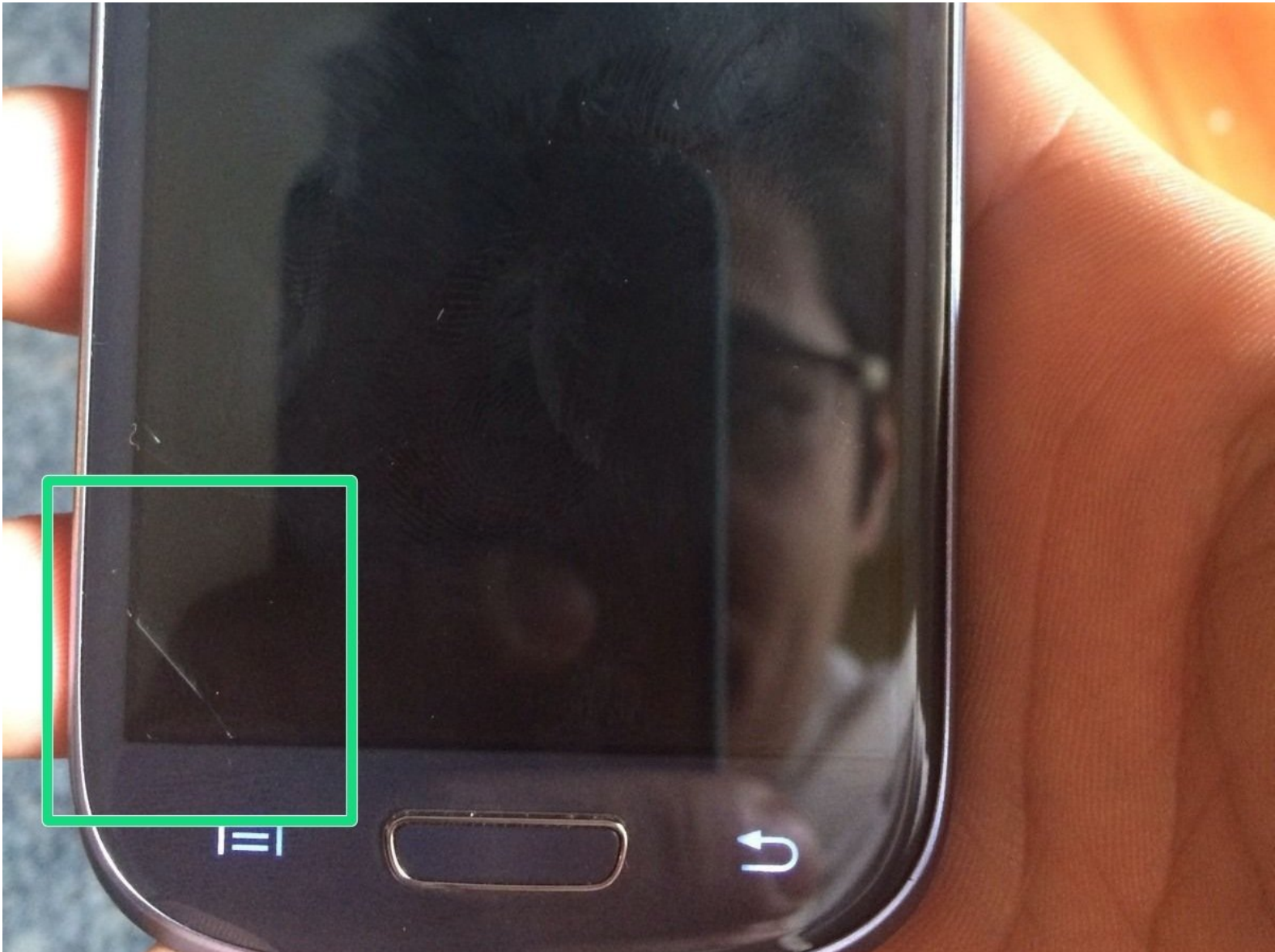




Samsung Galaxy S III i8190 mini Display + Touch Screen Replacement

Here we are! We are going to know how to replace the assembly of display+touch screen

Written By: Jaime



INTRODUCTION

Here we are! We are going to know how to replace the assembly of display+touch screen



PARTS:

- [Galaxy S III Mini \(Verizon\) Screen](#) (1)
-

Step 1 — Display + Touch Screen



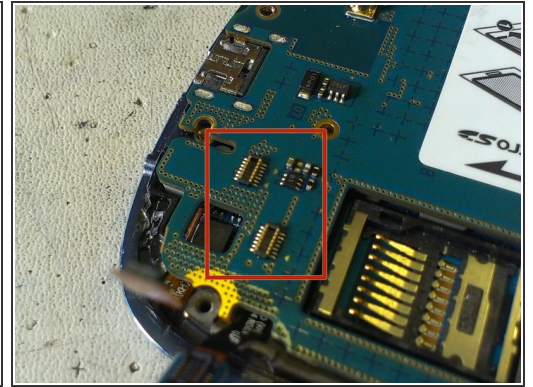
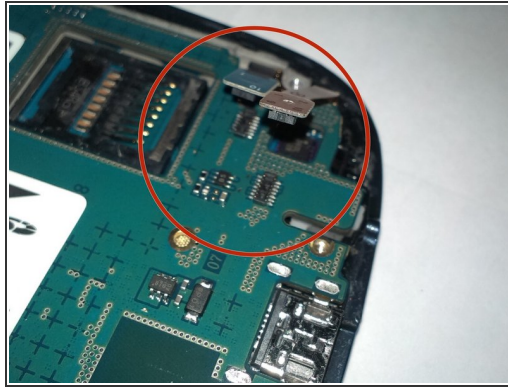
- ✦ Here we have the Samsung Galaxy S3 mini with the LCD broken. The touch works fine, but its easier to replace the entire assy.
- First of all, remove the battery door, then the battery....
 - Then, unscrew all the screw from the bottom side. NOTE:All the screws has the same lenght

Step 2



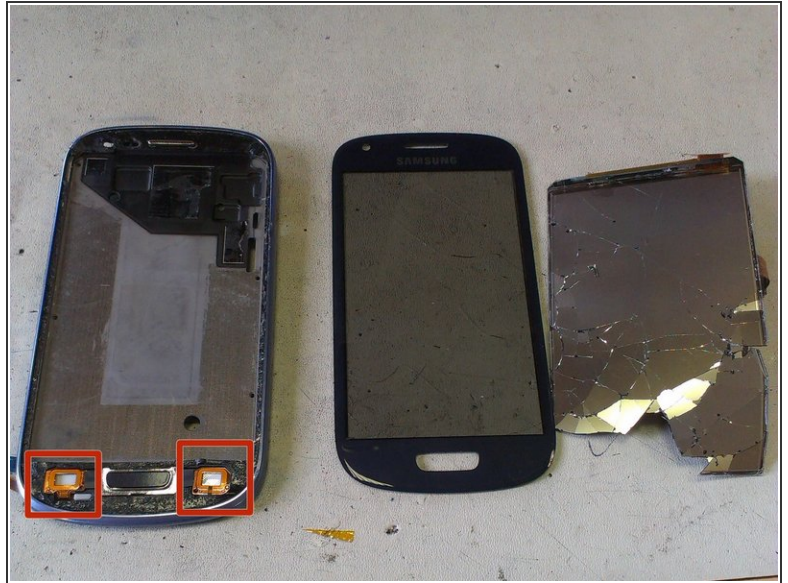
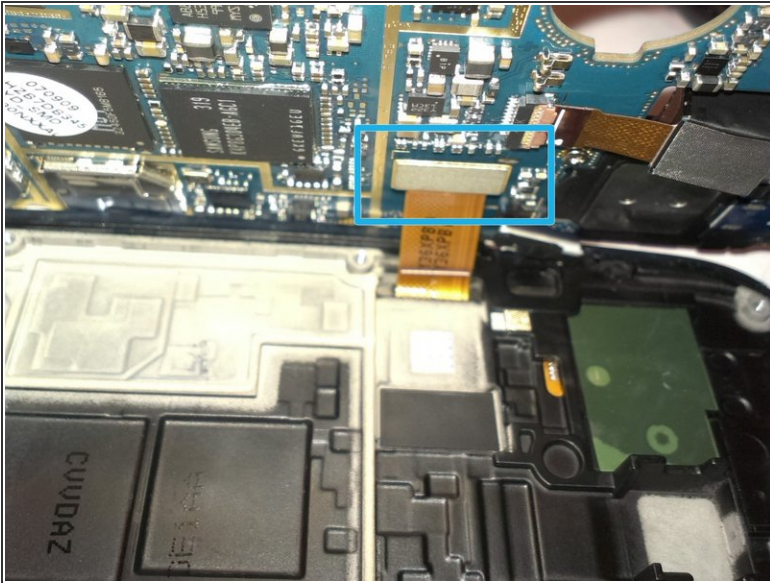
- Now, with a flat screwdriver or the plastic triangle, separate the rear case from the front case.
- Here we have the call speaker. Its glued to the front, so we have to release it or desolder the 2 knobs on the flex cable.

Step 3



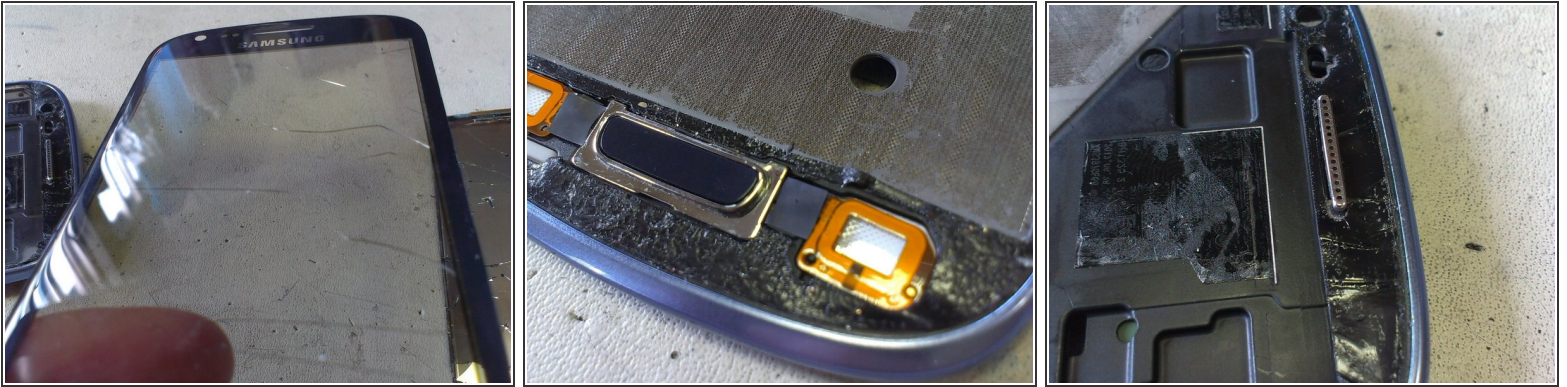
- Remove the volume and power buttons.
- Release the lower buttons and MicroSD connectors.

Step 4



- Now, lift from the right side the board, and be careful, below is the LCD connector.
- It's turn to the HOT STATION. If you don't have one of this, you can do it with a Hairdryer or a Heat gun
- I don't have any photo of the process, so I'm sorry for that. You must heat all the LCD area, and with special attention on the top and bottom areas.
- Please be careful with the 2 lower buttons, they have this orange flat cable!!
- As you can see, the LCD is totally destroyed, but it was broken before, so...

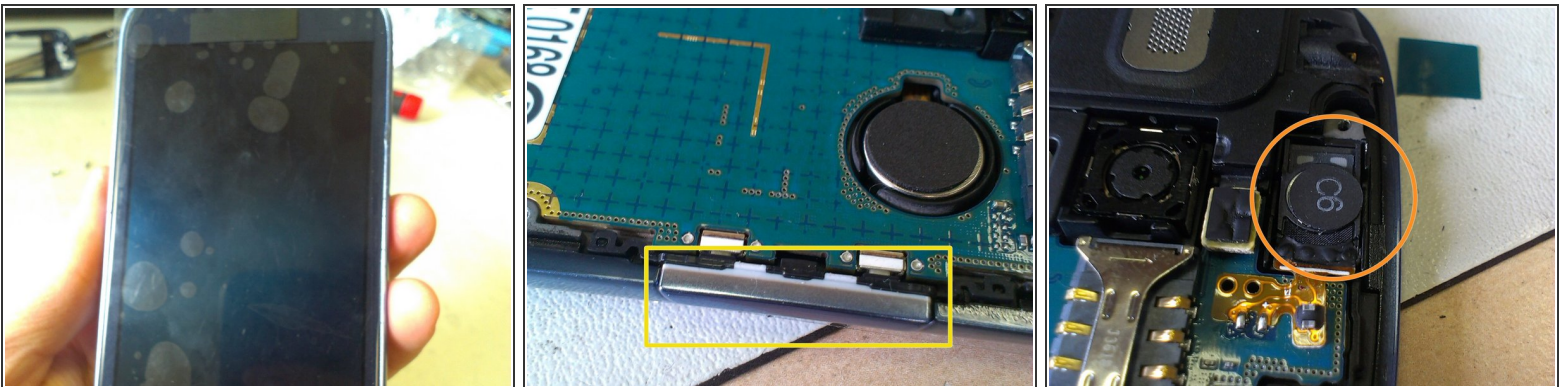
Step 5



- Now, you can see that the touch screen were damaged too, so this is why I have purchased the whole unit assy.

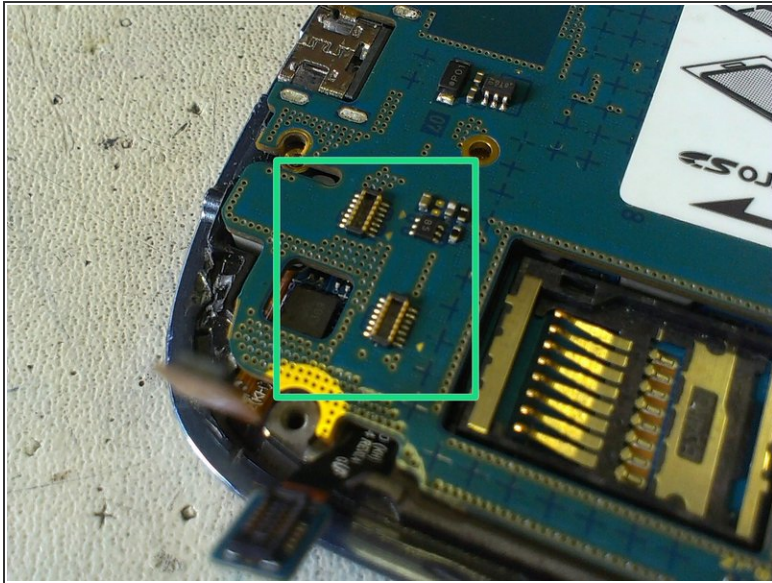
⚠ PLEASE!! DON'T remove these adhesive tapes! They are necessary for the new module (that doesn't have double sided tape)

Step 6



- Now, place the new module on the chassis, and be careful with the flex cables.
- To assembly all together, do the steps backwards, and don't forget to place the volume and power up buttons!
- Remember to put back the speaker

Step 7



- Reconnect all the connectors to the main board, place the rear case, and tight all the screws!
- YOU DID IT!!

To reassemble your device, follow these instructions in reverse order.