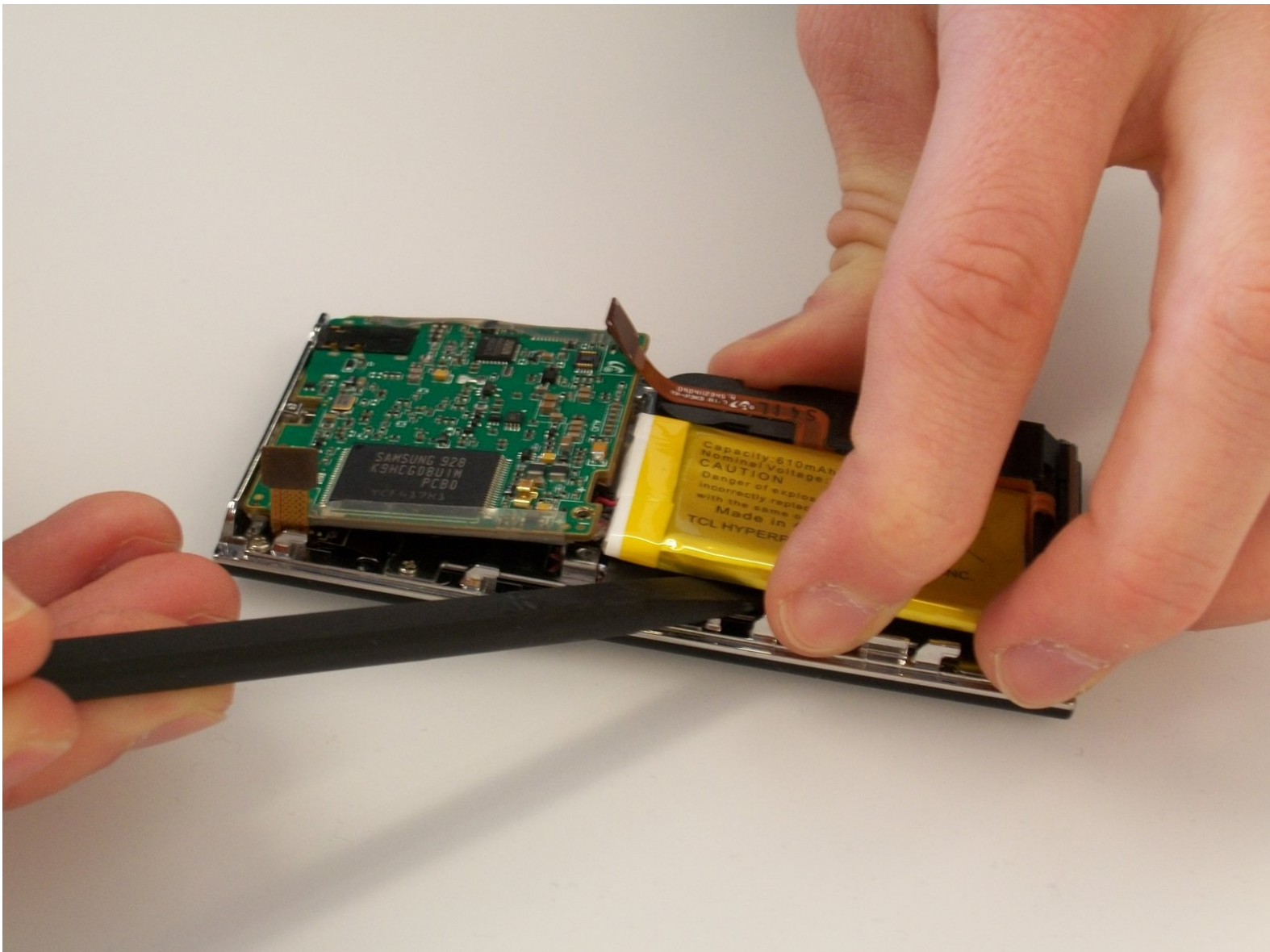




Samsung YP-P3 Battery Replacement

Follow these steps to replace the battery on a Samsung YP-P3 media player.

Written By: Sandra Freeman



INTRODUCTION

This replacement guide covers how to remove the back of the YP-P3, remove the circuit board (which the battery is connected to), and replace the battery.



TOOLS:

- [Phillips #000 Screwdriver](#) (1)
- [Spudger](#) (1)



PARTS:

- [Samsung YP-P3 Battery](#) (1)

Step 1 — Case Backplate



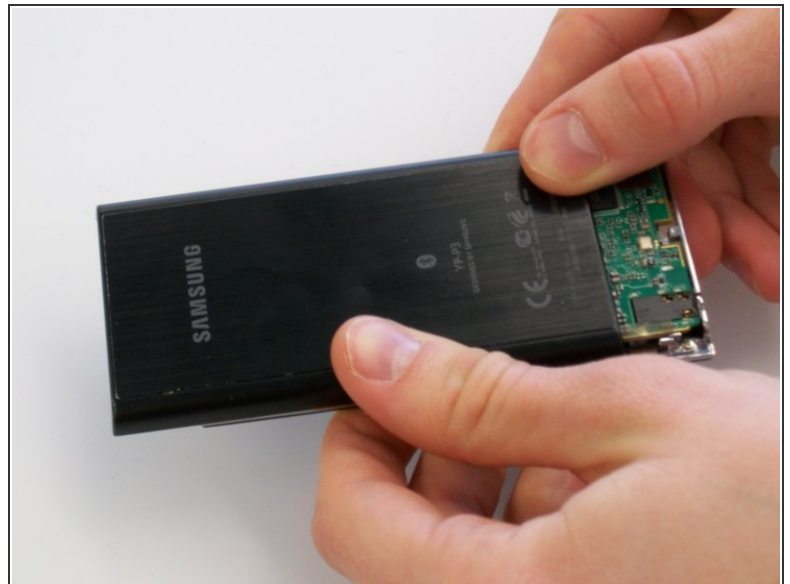
- Pry up the small black piece of plastic located between the volume [-] button and the HOLD/ON button.

Step 2



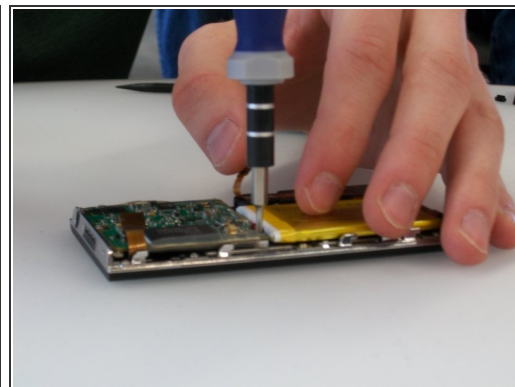
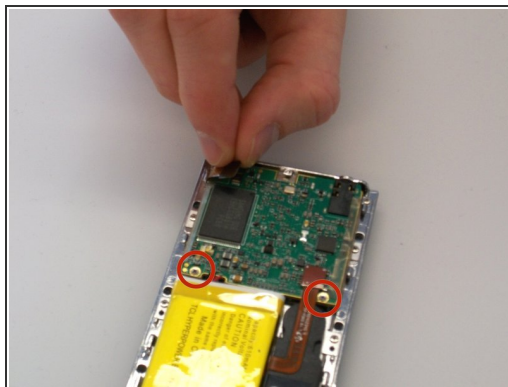
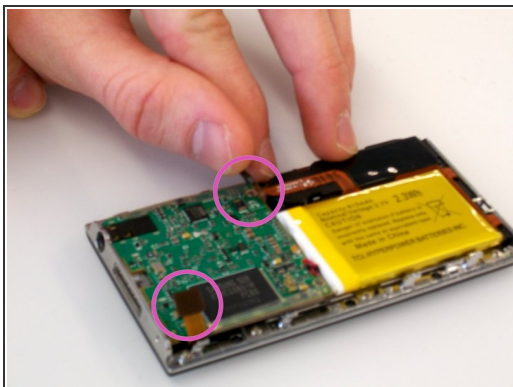
- Underneath the piece of plastic you just removed, there is a small screw (Phillips #000, 2.0 mm long). Use a Phillips #000 screwdriver to remove it.

Step 3



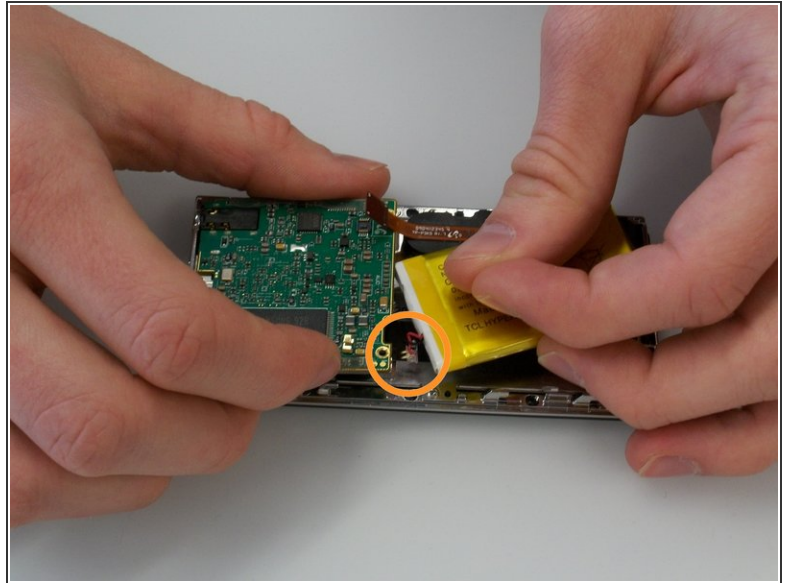
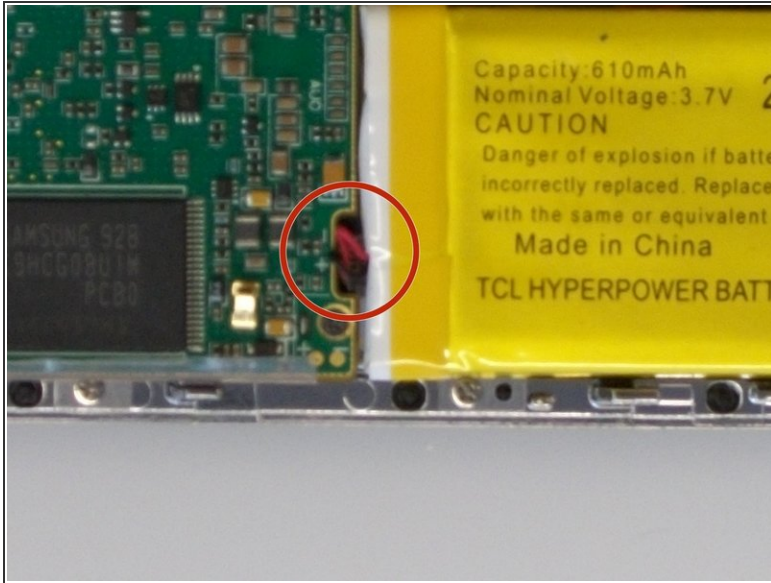
- Push on the backplate with both thumbs, sliding it towards the top of the device.
- Once it begins to move, lift up slightly. You can then slide the backplate all the way off.

Step 4 — Printed Circuit Board



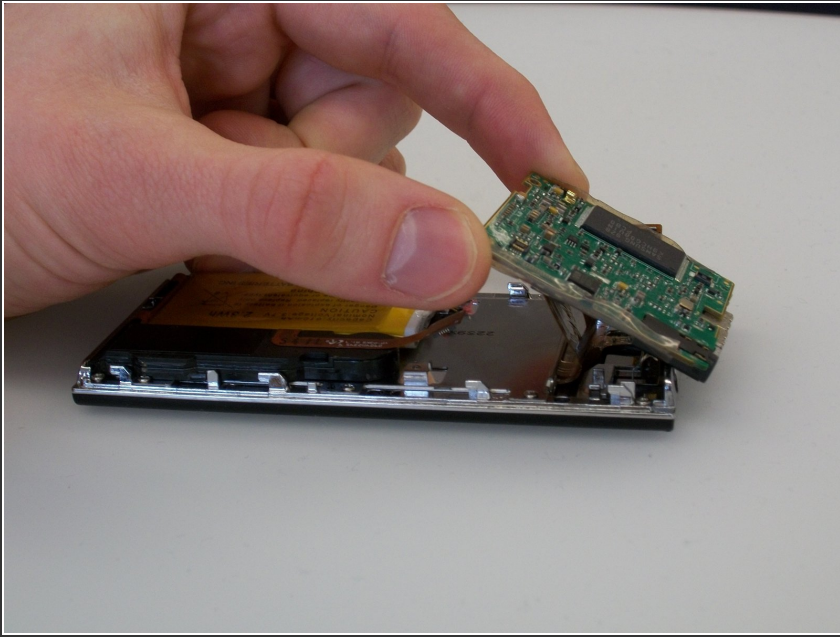
- Before removing the circuit board, we must remove the ribbon-like wires attached to two sides of the circuit board.
- There are two screws (Phillips #000, 2.0 mm long) holding in the circuit board. Use a Phillips #000 screwdriver to take out those screws.

Step 5



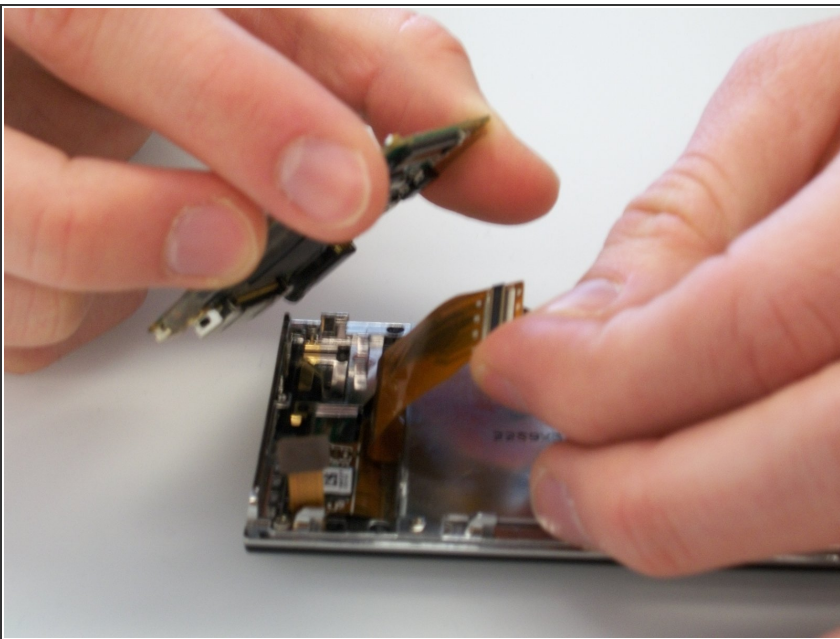
- The battery is also attached to the circuit board by a cable. The cable is difficult to disconnect with both components in place. It's best to lift the circuit board out partially to give yourself more room to disconnect the connector.
- The wire that is connected to the circuit board is connected by a plastic piece with two metal prongs.
- Use the pointy end of the spudger to place in between the computer board and the plastic piece and gently pry the prongs away from the circuit board.

Step 6



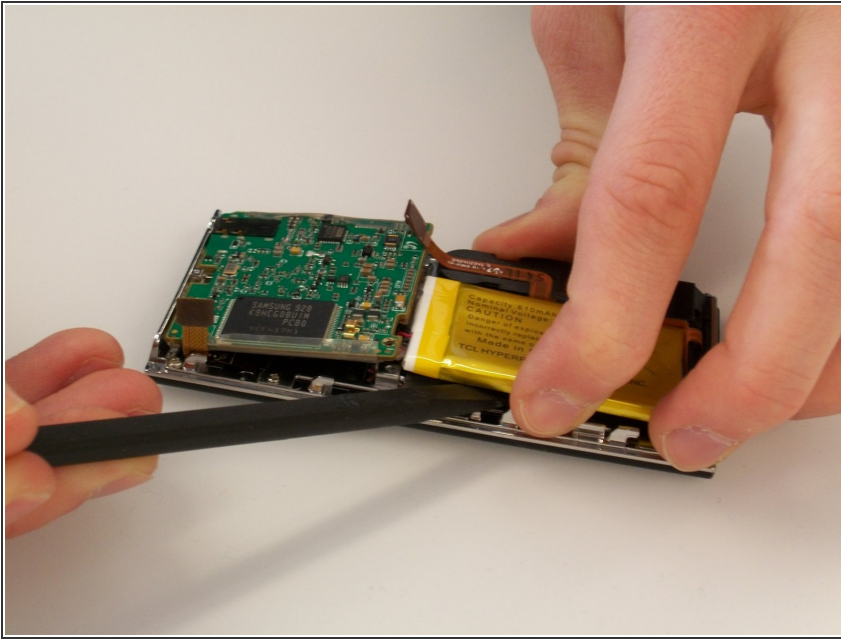
- Disconnect the battery connector, and then lift the circuit board up.

Step 7



- Finally, disconnect the ribbon cable on the bottom of the circuit board. You can then lift the circuit board all the way out.

Step 8 — Battery



- Use the spudger to carefully pry up the battery. The battery is attached with a few spots of glue, so it may not move at first.

To reassemble your device, follow these instructions in reverse order.