



Sony BDP-S1 Optical Drive Replacement

Replace the internal optical drive.

Written By: Sam



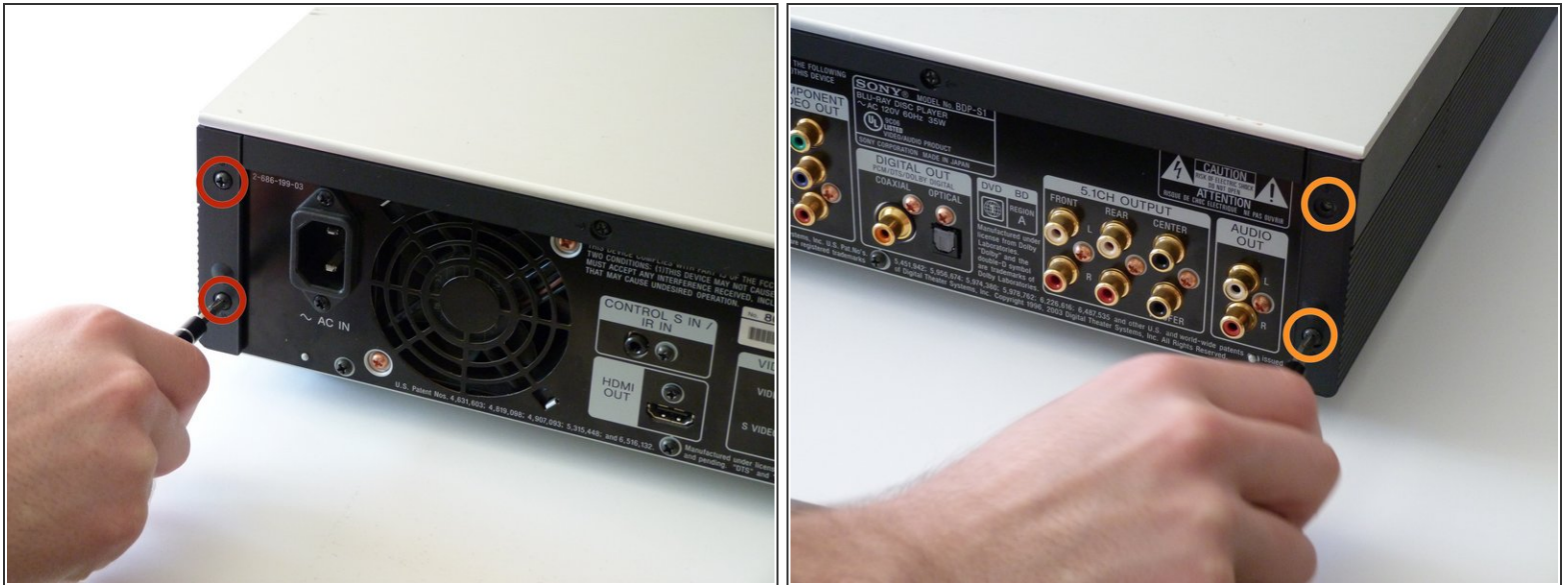
INTRODUCTION

Remove the screws holding the optical drive in place, unplug cables going to the optical drive, and finally replace the drive. You'll be back to watching movies in no time!

TOOLS:

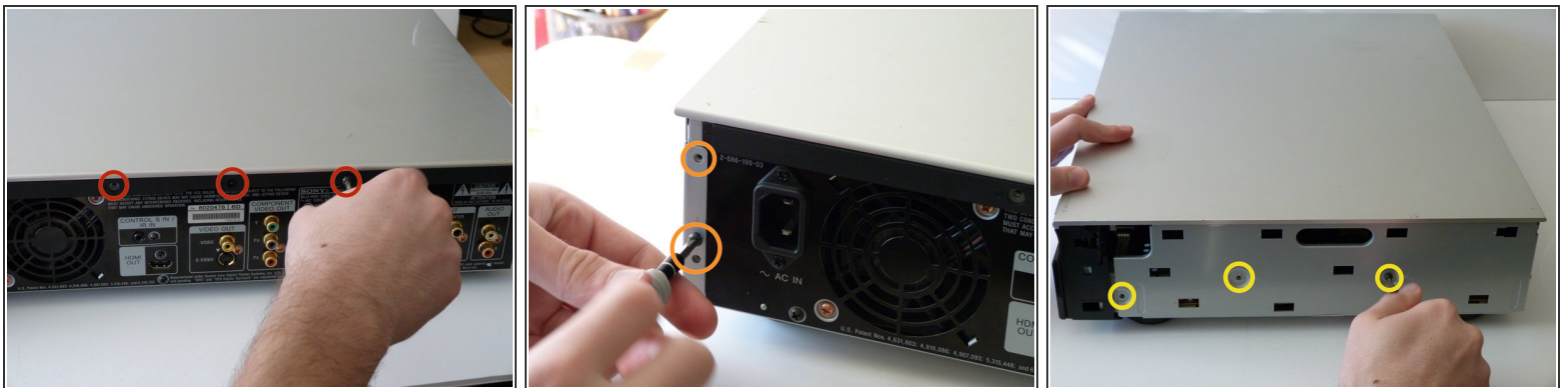
- [Phillips #2 Screwdriver](#) (1)
-

Step 1 — Sony BDP-S1: Getting inside the device



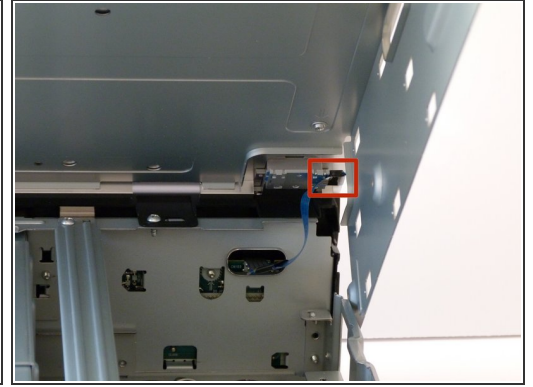
- Remove the 12mm screws with the Philips #2 screwdriver which keep the plastic panels in place.
- Don't forget, there are two more 12mm screws on the other side as well.


Step 2



- First, remove the three 12mm black screws holding the top panel on (Phillips #2).
- Then, remove the two 12mm black screws - one on each side of the back of the device - holding the top panel on.
- Lastly, remove the three 12mm black screws on each side of device.

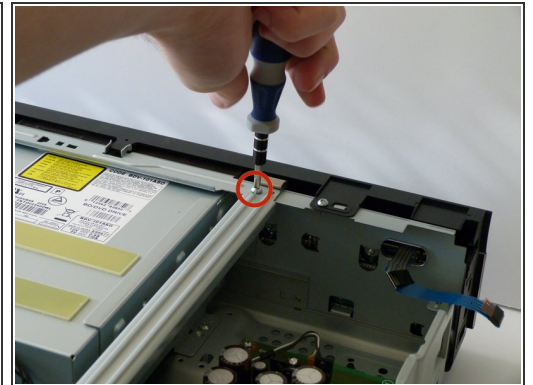
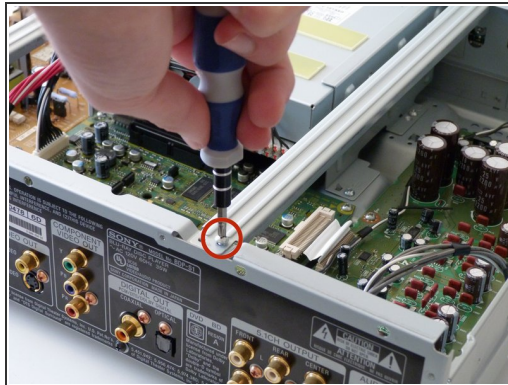
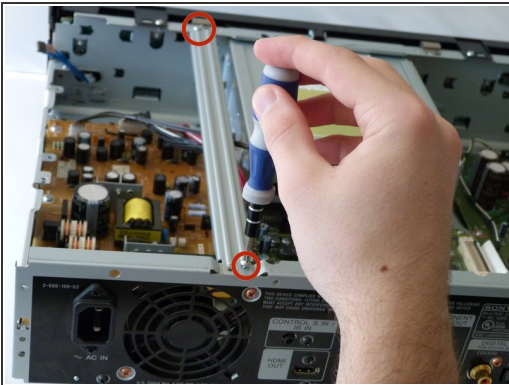
Step 3



 Carefully lift up the top panel, because there are two blue ribbon cables that must be disconnected before removing the panel, and we do NOT want them to break.

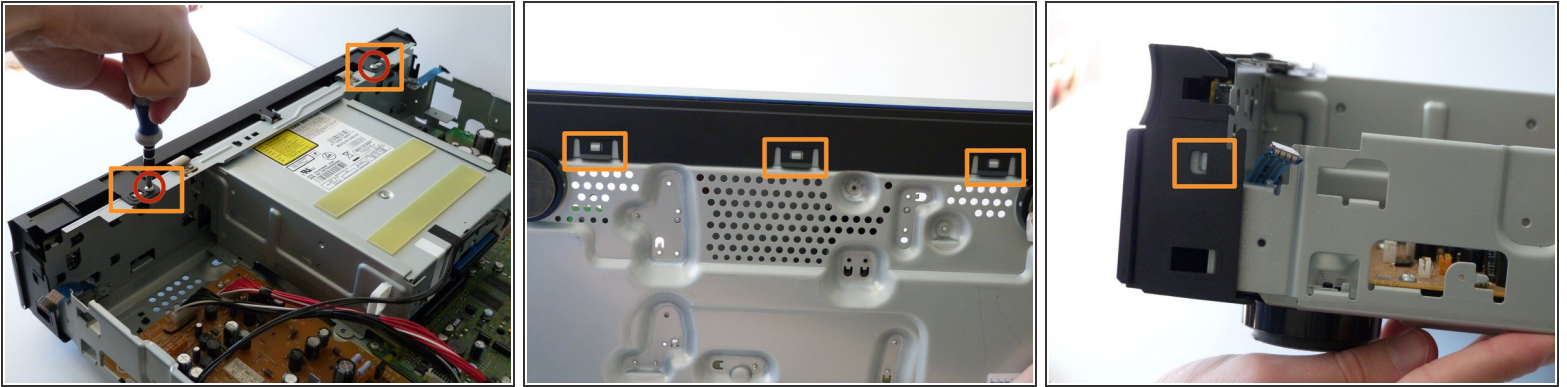
- After gently disconnecting the two ribbon cables (you can just pull them out with your hand), take the top off and set it to the side.

Step 4



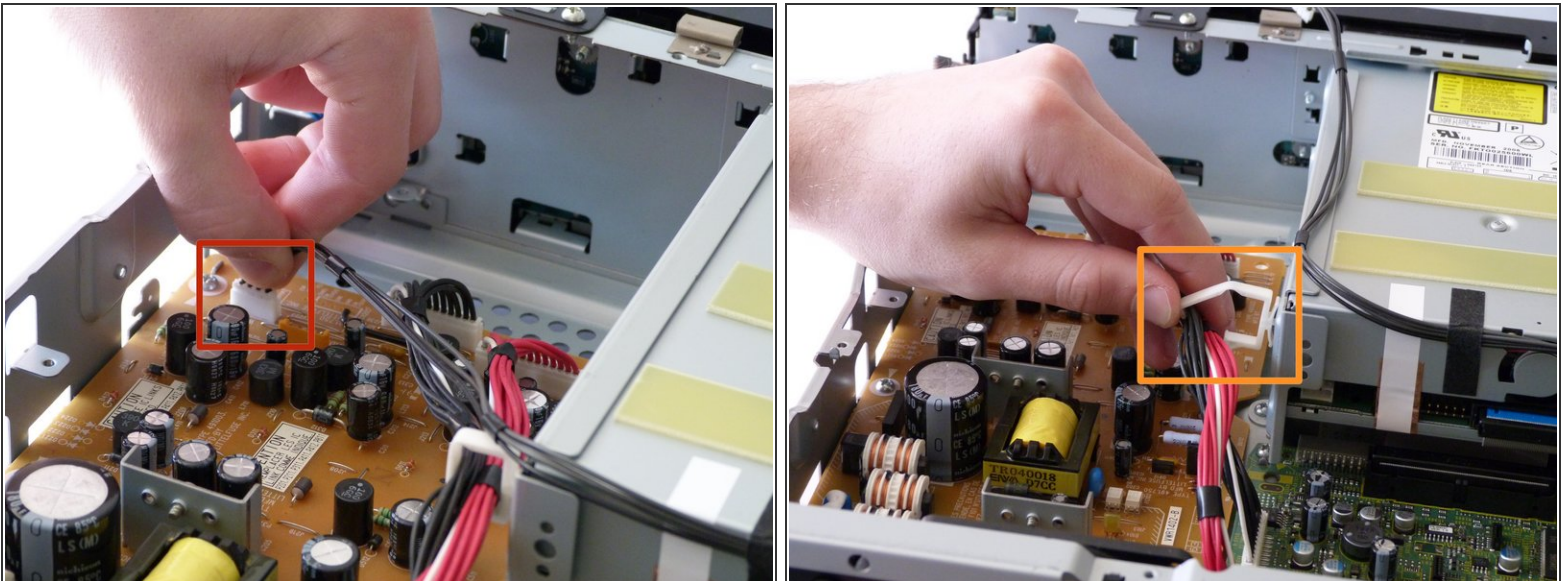
- After the top is off, you'll see that there are two metal bars that go across the top of the device.
- Remove each bar by unscrewing the two 10mm silver screws on each end.

Step 5 — Optical Drive



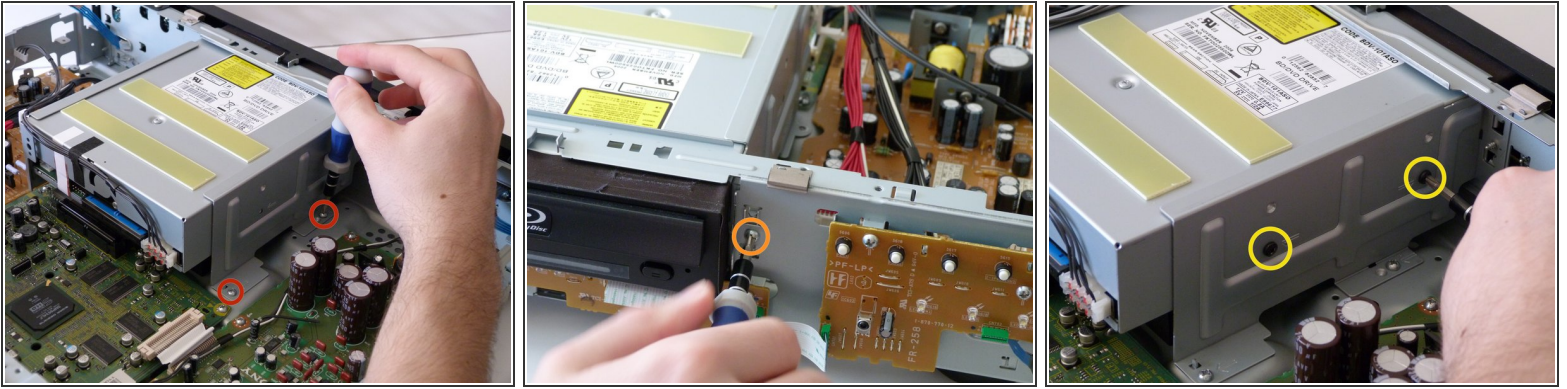
- Remove the two 10mm silver screws holding the front panel on with the Phillips #2 screwdriver, located on the top side of the front panel.
 - Take off the front panel by depressing the clips (either with your fingers, screwdriver, or other small object) and pulling it off.
- ⓘ There are two clips on the top, one on each side, and three on the bottom.

Step 6



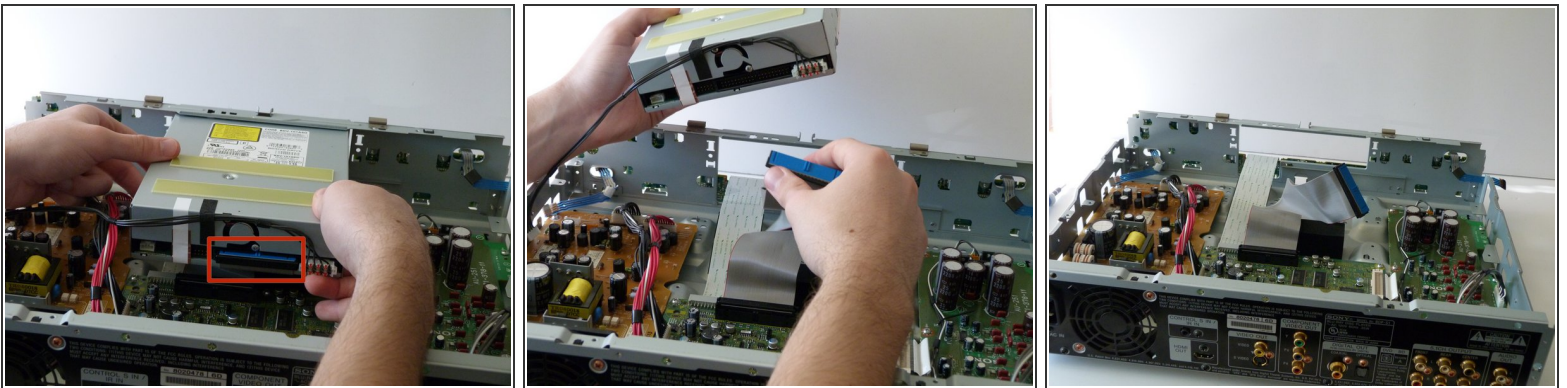
- Before unscrewing the optical drive enclosure, the small cable on the left of the drive (when looking at the device from the back) needs to be disconnected from the circuit board (the orange one).
- Also, take the cables out of the white clip that is on the side of the optical drive.

Step 7



- Unscrew the two metal clamps on both sides of the optical drive by removing three sets of screws:
 - The two 10mm silver screws on the bottom of the each clamp.
 - The 10mm silver screw holding each clamp from the front.
 - The two 5mm black screws on the sides.
- Remove the two clamps. They can be removed by hand.

Step 8



- Gently pull the optical drive back to dislodge it from the front of the device and then lift it up.
- Remove the wide ribbon cable from the back of the optical drive.

To reassemble your device, follow these instructions in reverse order.