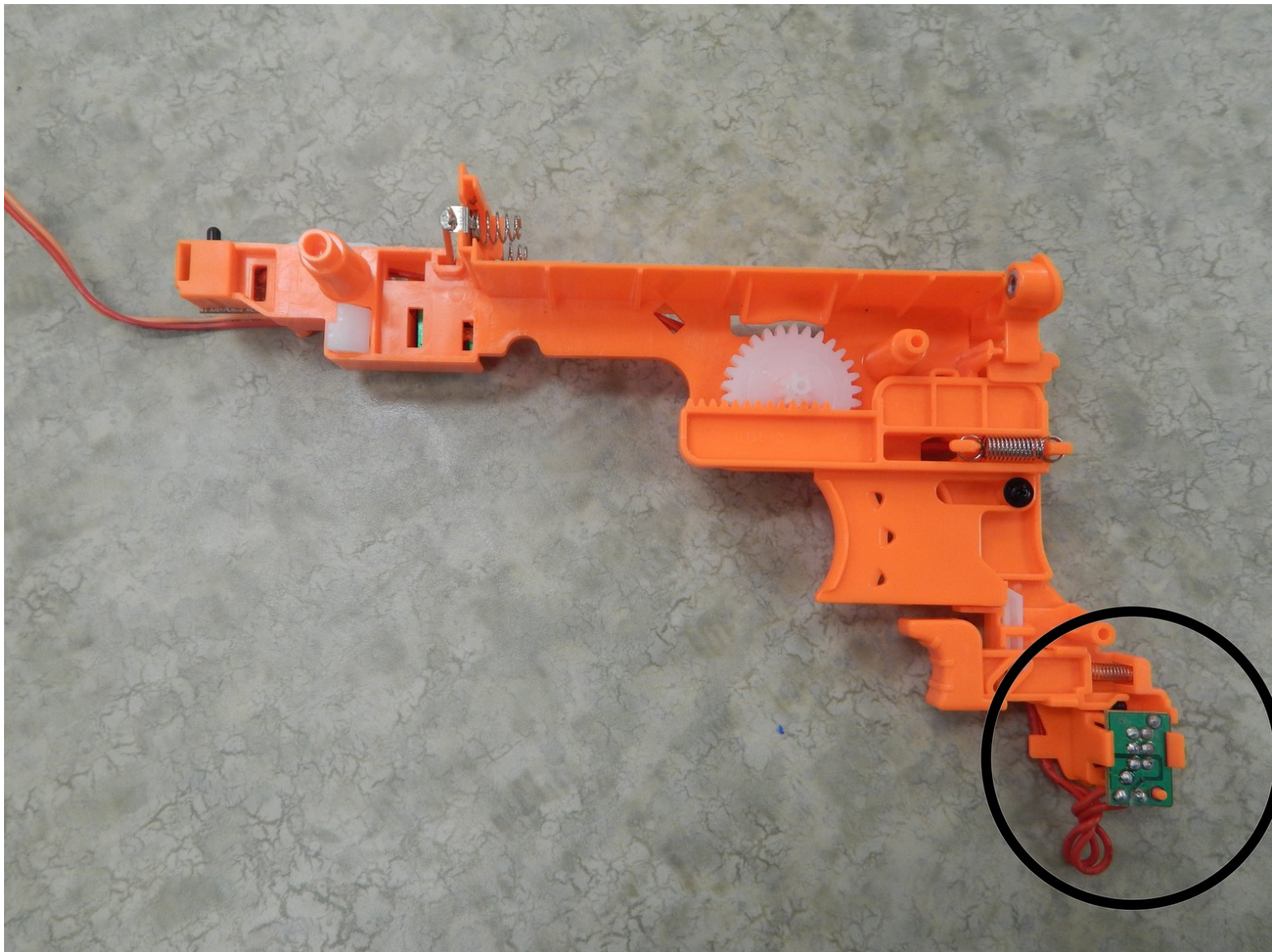




# Nerf N-Strike Elite Hail-Fire Trigger Circuit Board Replacement

Remove the circuit board that activates the automatic firing mechanism from your Nerf N-Strike Elite Hail-Fire.

Written By: sage



---

## INTRODUCTION

Use this guide to remove the circuit board that activates the automatic firing mechanism.

---




### TOOLS:

- [Phillips #2 Screwdriver](#) (1)
  - [iFixit Opening Tools](#) (1)
-

## Step 1 — Left Shell



 Before disassembling your Nerf Hail-Fire, be sure to remove the batteries.

- Remove the two 9.0 mm Phillips screws securing the battery compartment.
- Slide the battery compartment out.

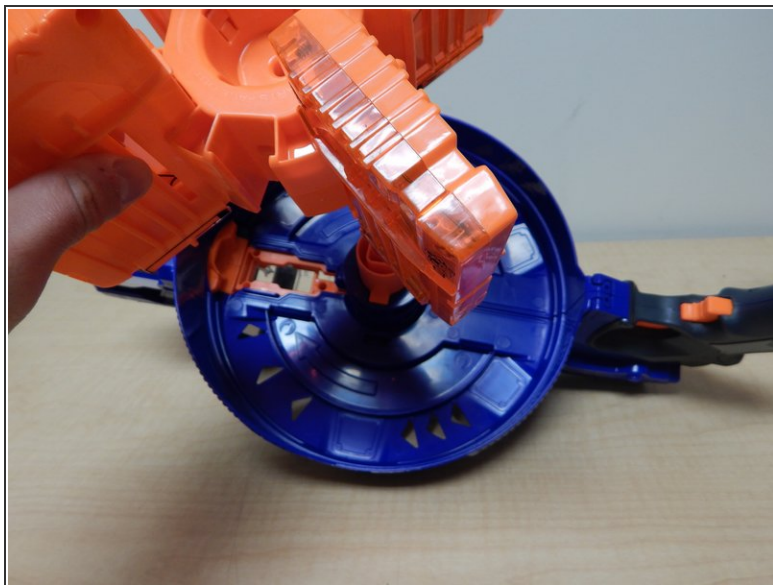
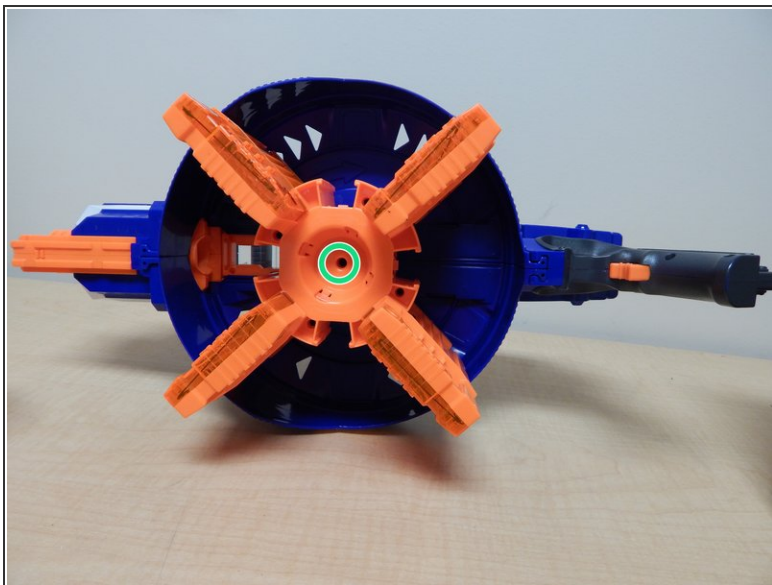
## Step 2



- Remove the five 9.0 mm Phillips screws securing the trigger.

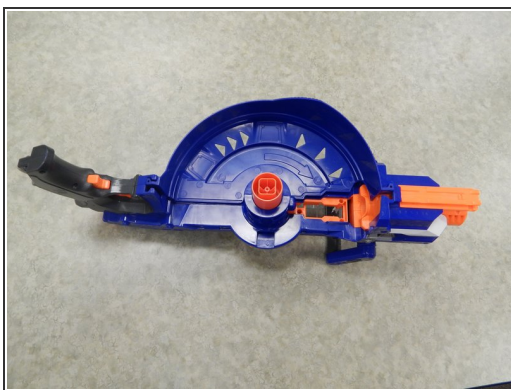


### Step 3



- Remove the single 11.0 mm Phillips screw securing the magazine cartridge chambers.
- Pull the entire chamber upwards to separate it from the rest of the Nerf Gun.

### Step 4



- Remove both halves of the ring by tugging on it upwards until the lock gets freed.

⚠ This requires quite a bit of force and if you are not careful, you may break the plastic lock.

## Step 5



- Remove the four 9.0 mm Phillips screws from the newly revealed cylinder.

## Step 6



- Remove the three 9.0 mm Phillips screws holding the top latch of the Nerf Gun together.



## Step 7



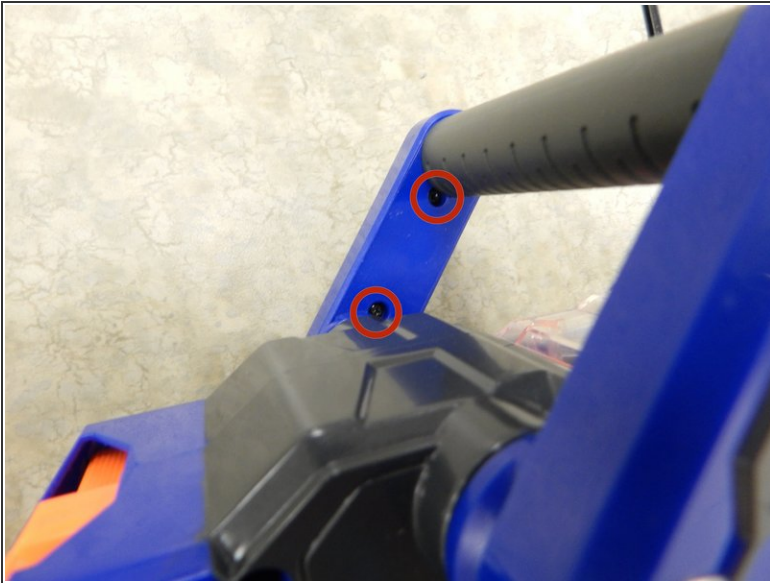
- Remove the three 9.0 mm Phillips screws holding together the firing chamber.
- Remove the single 7.0 mm Phillips screw below the barrel.
- Remove the two 14.0 mm Philips screws using a screwdriver with a length of approximately 4.0 inches and a diameter of approximately 0.2 cm.

## Step 8



- Remove the single 14.0 mm Phillips screw holding together the handle and the Nerf Gun.

## Step 9



- Remove the two 9.0 mm Phillips screws holding together the handle.
- Remove the plastic cover of the handle.



## Step 10



- Insert one plastic opening tool inside one side of the orange part depicted in the picture.
- Insert a second plastic opening tool to the other side of the orange part and gradually pull the piece out, freeing it from the handle.

## Step 11



- Pull one end of the handle away from the orange latch.
- Repeat the procedure on the other side to completely remove the handle from the rest of the Nerf Gun.



## Step 12



⚠ Lift the entire left shell slowly. The process should be easy and if there is any resistance, there is something wrong. You may have forgotten a screw.

- Completely remove the left shell from the rest of the Nerf Gun.

## Step 13 — Inner Plastic Components



- Remove the cartridge support.

## Step 14



- Remove the handle crank.

## Step 15



- Remove the clear plastic barrel cover.



## Step 16



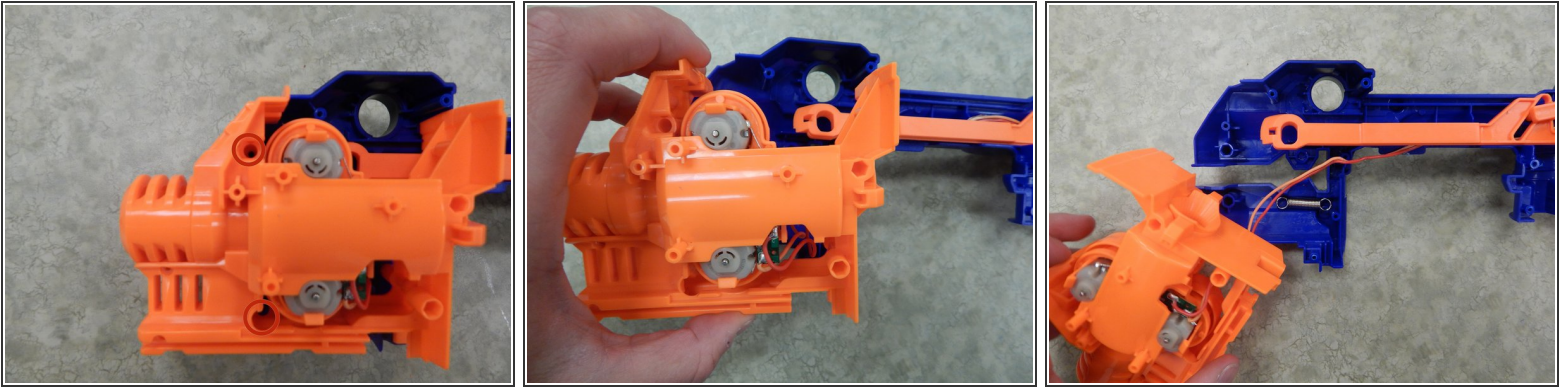
- Remove the firing pin.

## Step 17 — Right Shell



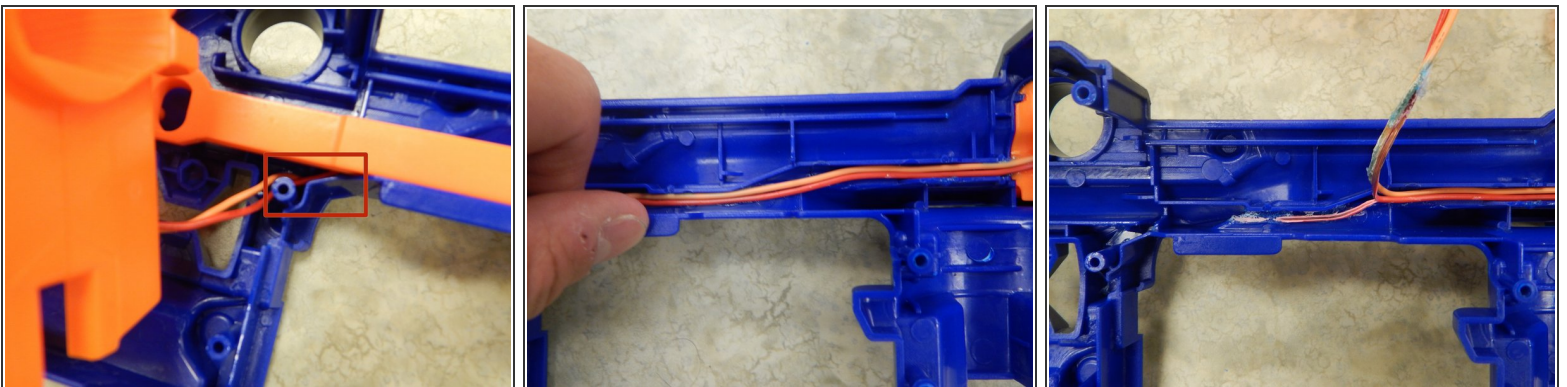
- Lift the trigger mechanism out of the shell.
- ⓘ You cannot fully remove the trigger mechanism just yet. However taking it out of the shell helps in later steps.

## Step 18



- Remove the two 9.0 mm Phillips screws.

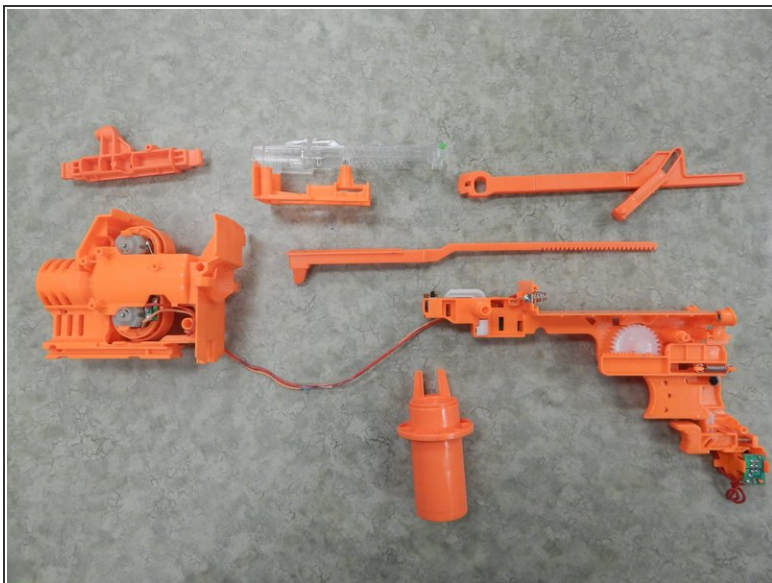
## Step 19



- To remove the motor and trigger mechanism you have to detach these two wires which are glued to the shell.
  - Hold close to the wire and pull upward slowly.
- ⚠ If you pull too quickly you can potentially damage the wire.



## Step 20



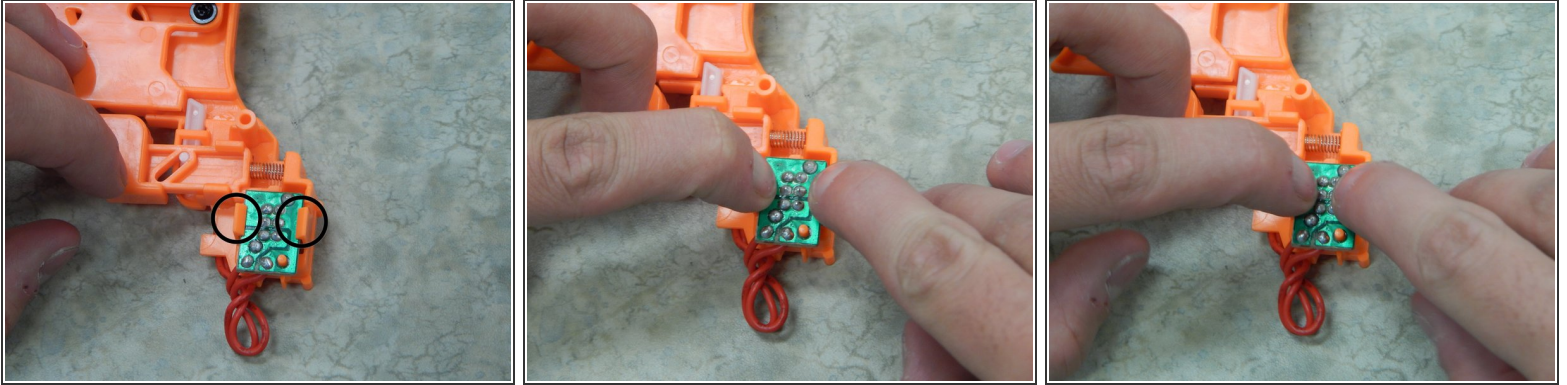
- Once all the pieces are removed the right shell should be fully accessible.

## Step 21 — Trigger Circuit Board



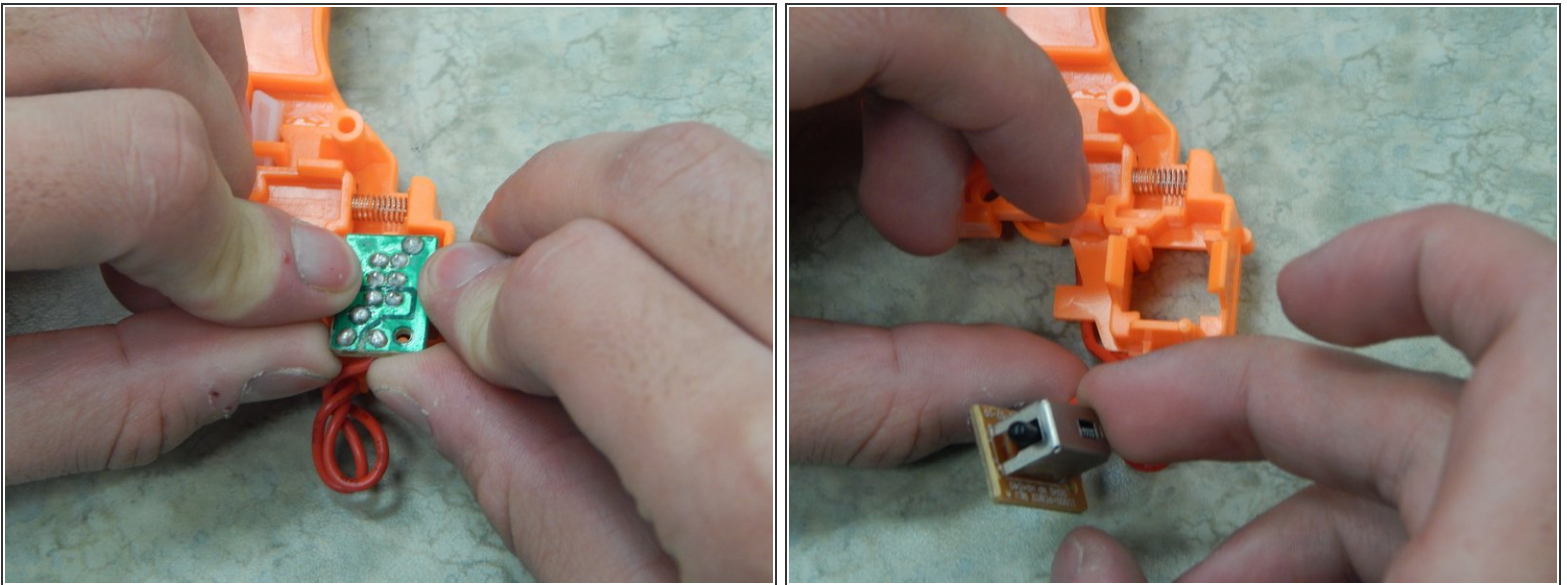
- Once you have the handle disassembled locate the triggering circuit board.

## Step 22



- Find the two plastic clasps and position your hands so you can pry them open with your fingers. We recommend that you try and pry them open without removing the piece so you can feel how fragile the plastic is.

## Step 23



- ⚠ The circuit board has sharp metal solder points on it. If your finger slips you could injure yourself. Consider using gloves.
- To remove use two fingers to pry the plastic edges apart and with your thumbs remove the circuit board. Having a friend help with this step could be beneficial.



To reassemble your device, follow these instructions in reverse order.