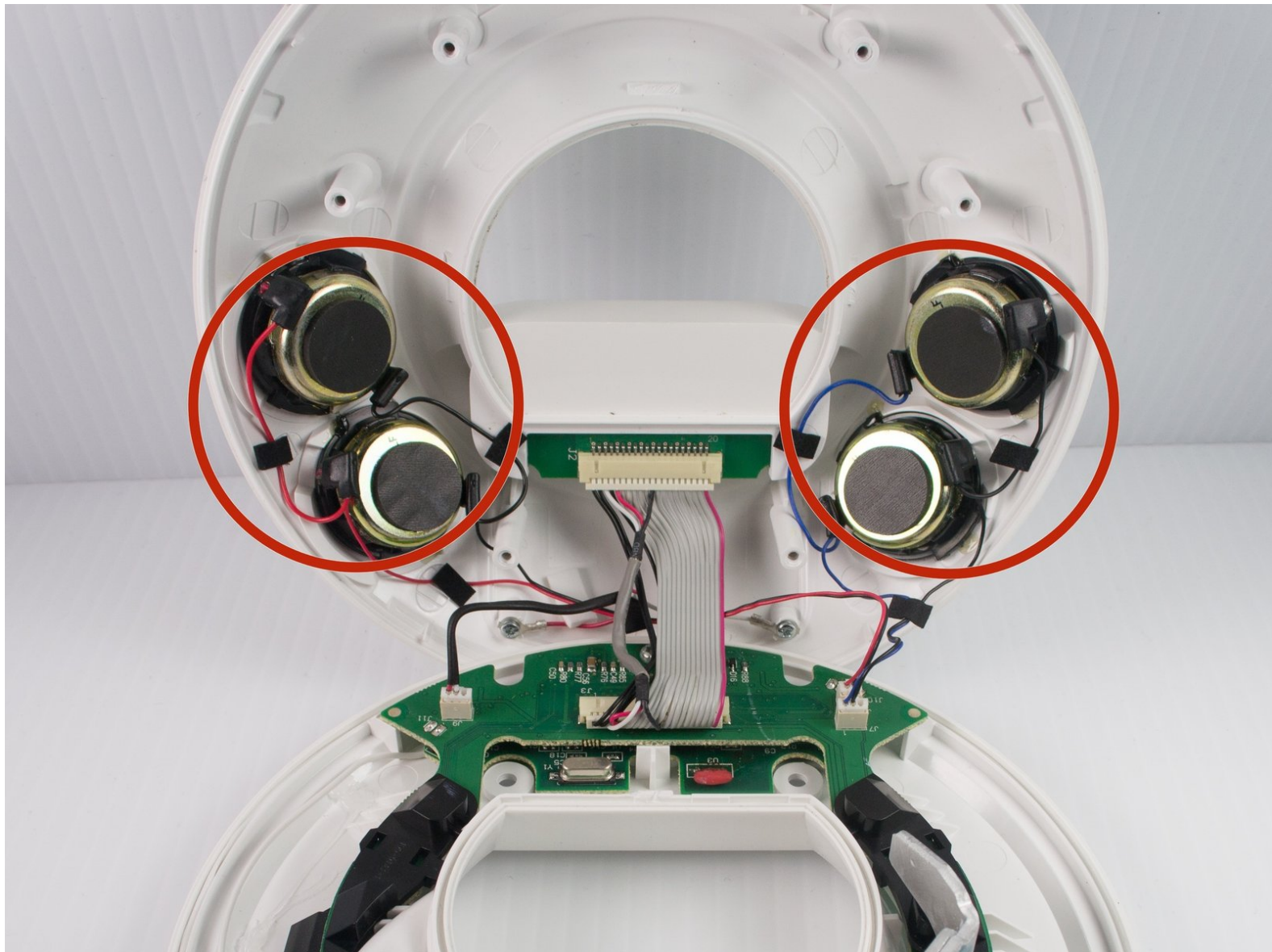




# JBL On Stage II Speakers Replacement

This will guide you through how to remove and replace the speakers within the device.

Written By: Janessa D Cabrera



---

## INTRODUCTION

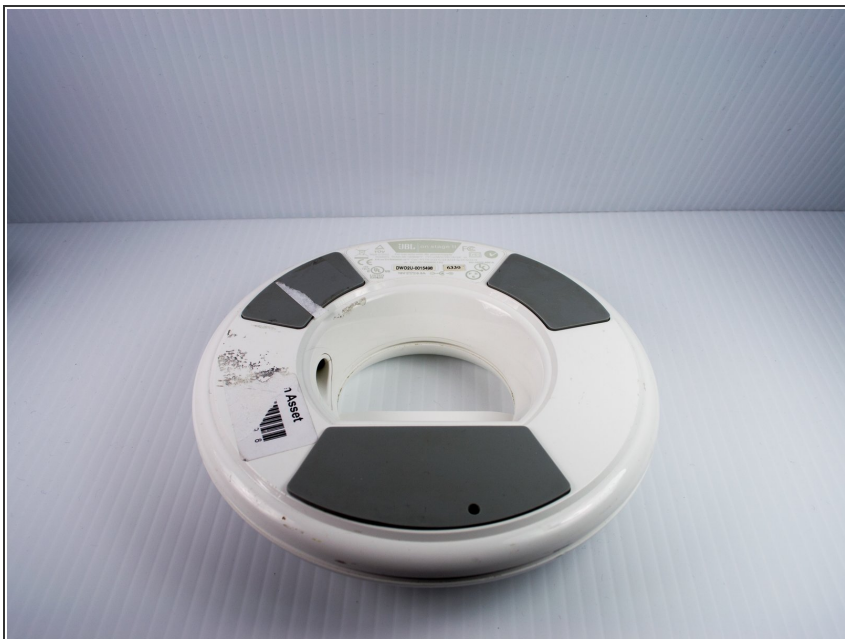
First, the device will need to be cracked open. After, you will remove the damaged speakers and replace them with new, working speakers.

---

### TOOLS:

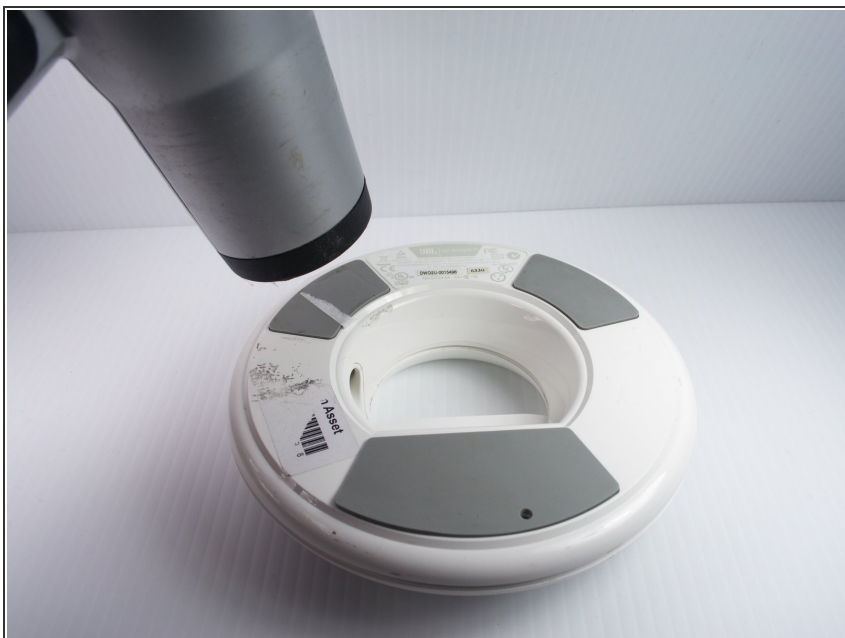
- [Heat Gun](#) (1)
  - [T-10 Torx Screwdriver](#) (1)
  - [Metal Spudger Set](#) (1)
  - [Heat Shrink Tubing Assortment](#) (1)
  - [Flush Wire Cutters](#) (1)
  - [Soldering Workstation](#) (1)
-

## Step 1 — Cracking the Case



- Turn the device upside down so that the three rubber pads are facing up.

## Step 2



- Use a heat gun (set to low) to apply heat to one of the rubber pads until you can easily remove the pad. This step takes around 5-7 minutes.

### Step 3



- Remove the heated rubber pad with a plastic opening tool.
- Repeat steps 2 and 3 for the two remaining rubber pads.

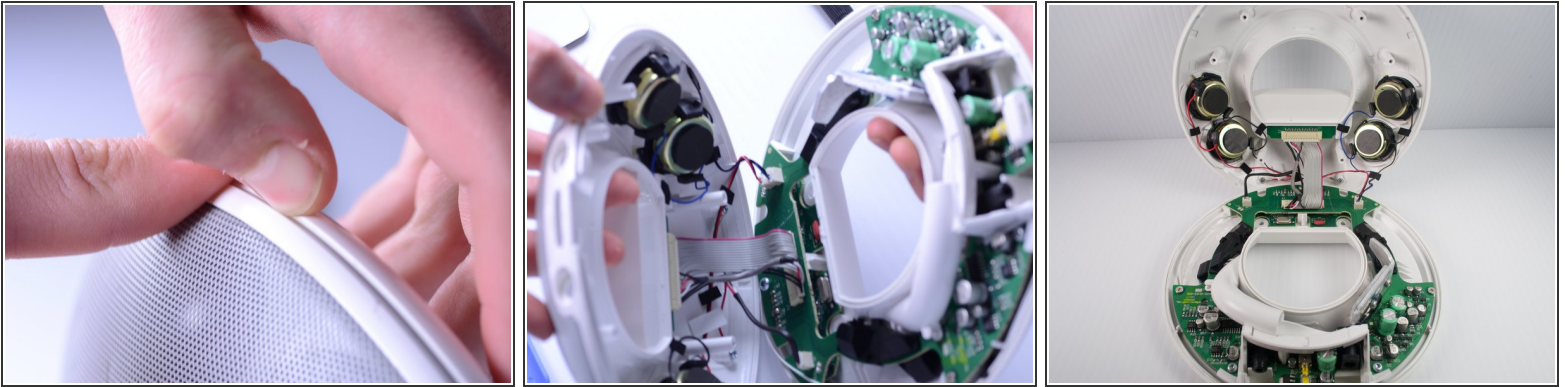
### Step 4



- Remove the six 1cm T-10 torx screws on the bottom of the device (found under the rubber pads) using a T-10 Torx screwdriver.



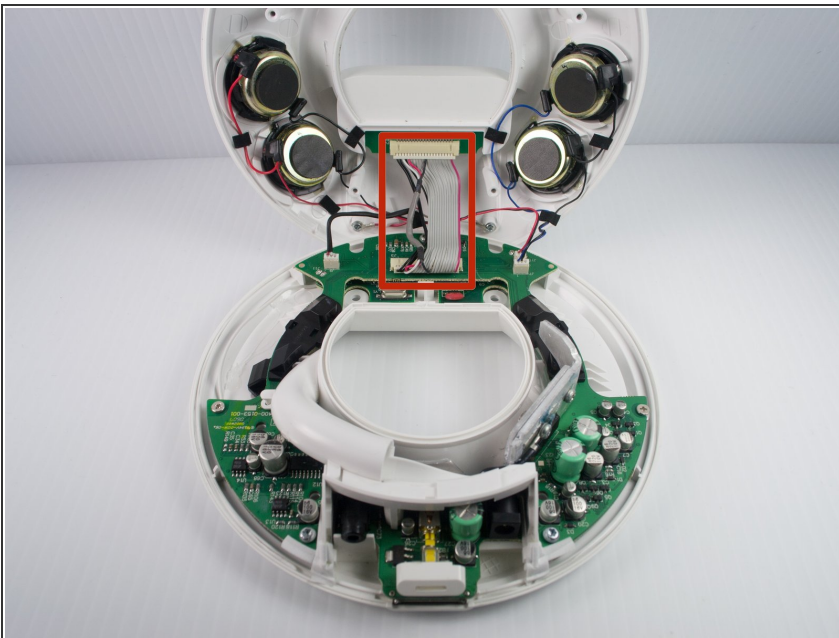
## Step 5



- Open the device along its seam.

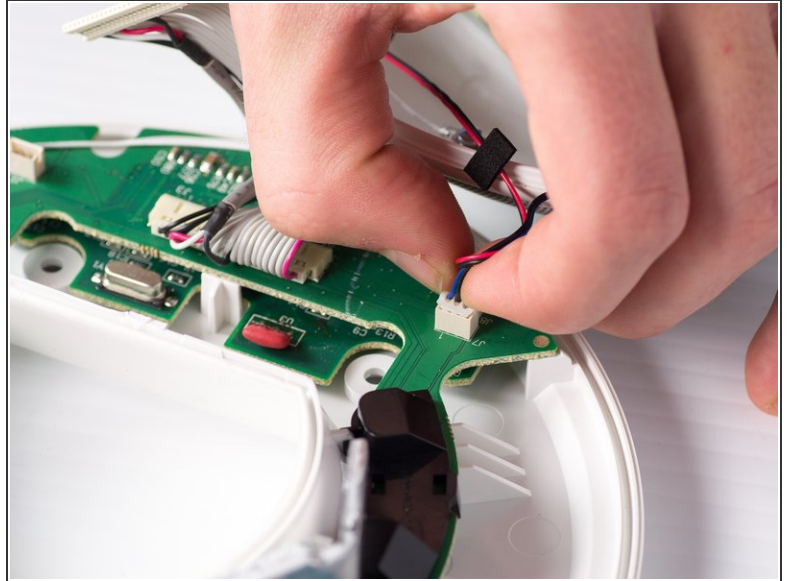
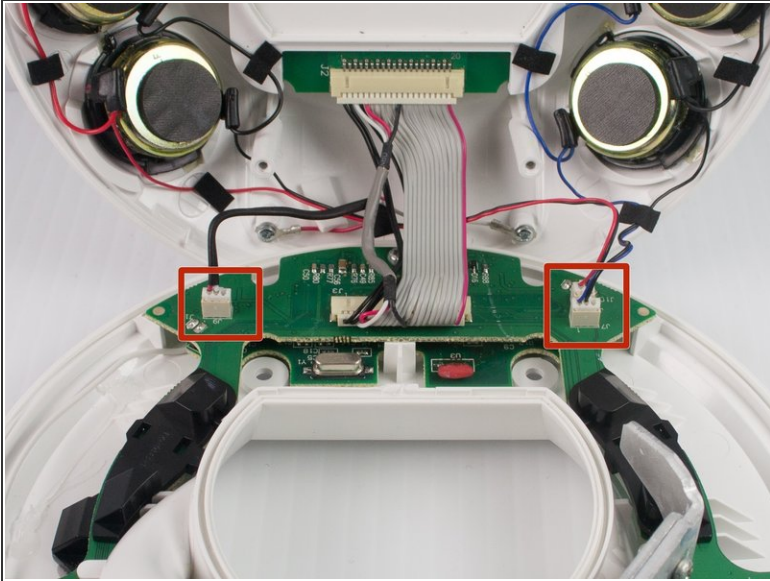
⚠ Be careful when separating the device because there are wires connecting the two separate halves.

## Step 6



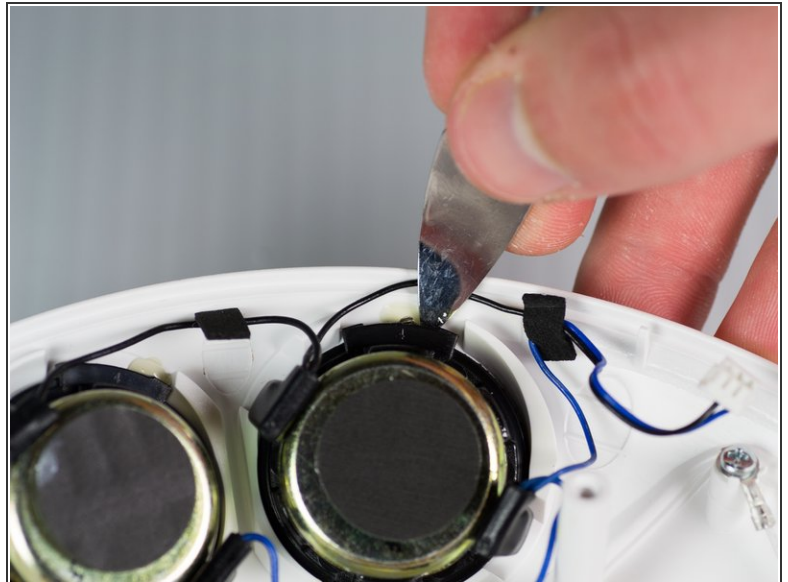
- Disconnect the ribbon cable connector from the top half of the device by pulling outward and parallel to the connecting pins.

## Step 7



- Locate and disconnect the two molex connectors found on either side of the ribbon cable connector on the bottom half of the device.

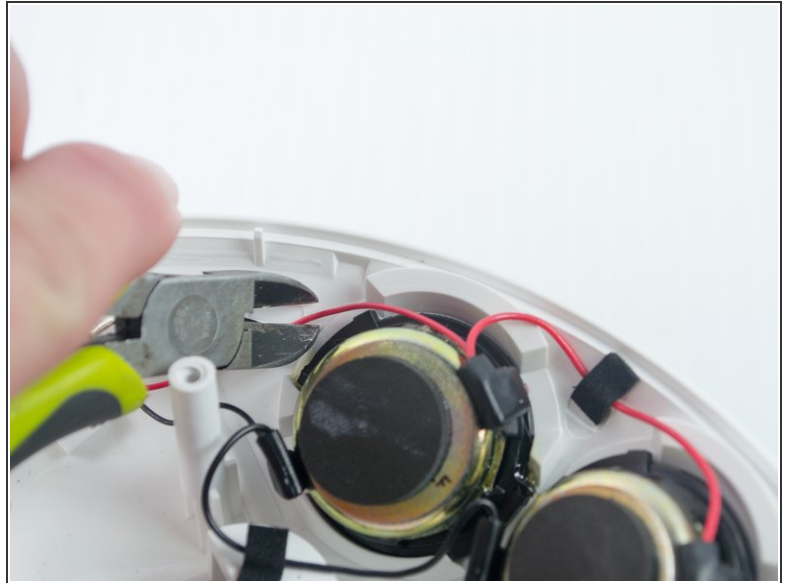
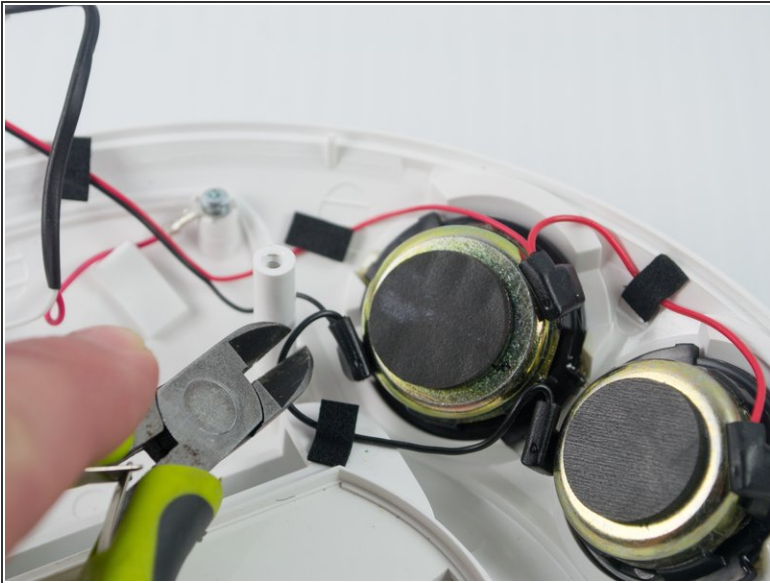
## Step 8 — The Speakers



- Separate speakers from their slots using a metal spudger.

⚠ Careful, as this step may cause damage to the device.

## Step 9



- Cut the black wire (leading to the speaker you are replacing) with a pair of wire cutters.
- Cut the red wire (leading to the speaker you are replacing) with a pair of wire cutters.
- ⓘ Notice that two black wires and two red wires connect to the speaker, be sure to reattach both wires to the new speaker.

To reassemble your device, follow these directions in reverse order.