



# Repairing Samsung SPH-A640 Keypad Replacement

This guide will enable you to replace the keypad in a Samsung SPH-A640 phone.

Written By: Natasha



# INTRODUCTION

This guide will enable you to replace the keypad in a Samsung SPH-A640 phone.



## TOOLS:

- [Spudger](#) (1)
- [Phillips #00 Screwdriver](#) (1)
- [1.5 mm Flathead Screwdriver](#) (1)
- [Tweezers](#) (1)



## PARTS:

- [Keypad](#) (1)

## Step 1 — Back Cover



- Press and hold the “End” button until the phone powers off.

## Step 2



- Turn the phone over on its backside.
- Remove the bottom cover by sliding it downward, and then remove the battery.



## Step 3 — Keypad



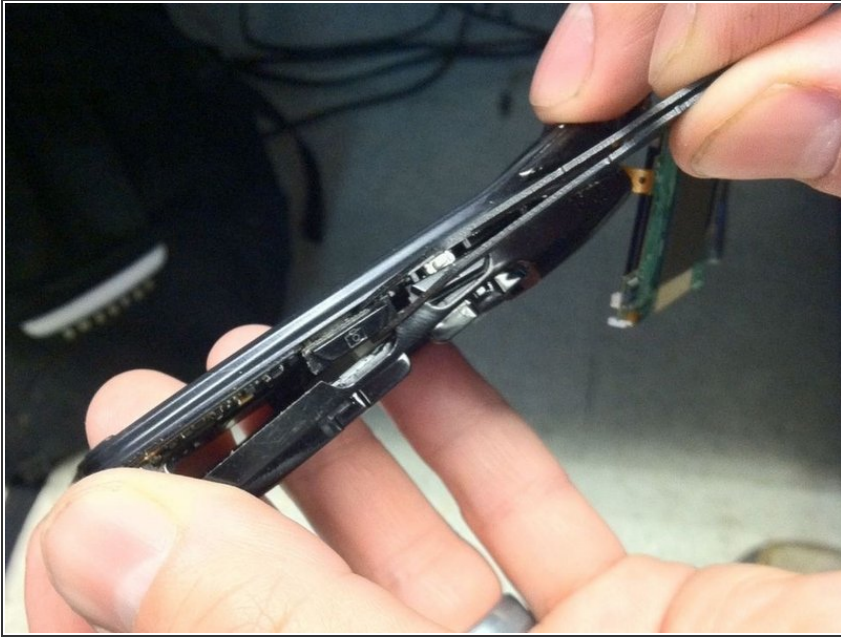
- Using a #00 Phillips screwdriver, remove four screws from the bottom half of the phone in the battery compartment. Place screws off to the side.

## Step 4



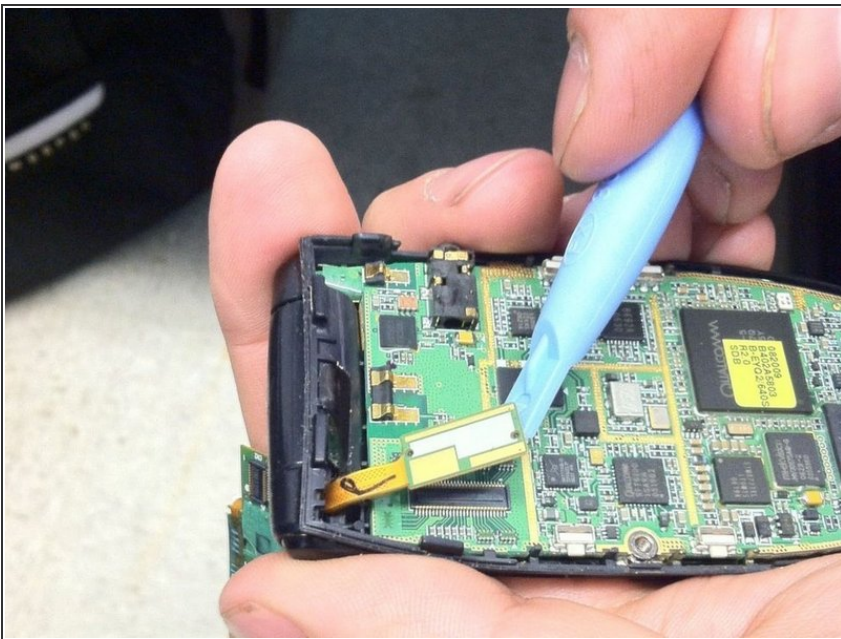
- Using spudger, pry off back cover starting at the bottom corners and moving around the perimeter towards the hinge. Disengaging the clips near the hinge may require some force.

## Step 5



- Using tweezers, carefully remove buttons from both sides while removing back cover. Note the positions of the buttons. They must be returned to the proper positions.

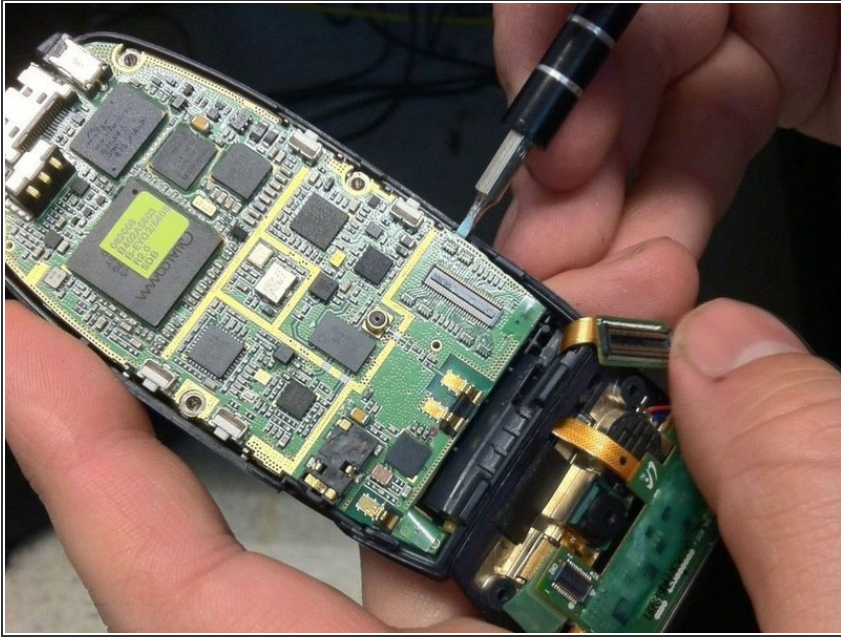
## Step 6



- Using spudger, disconnect electrical connector near the hinge.

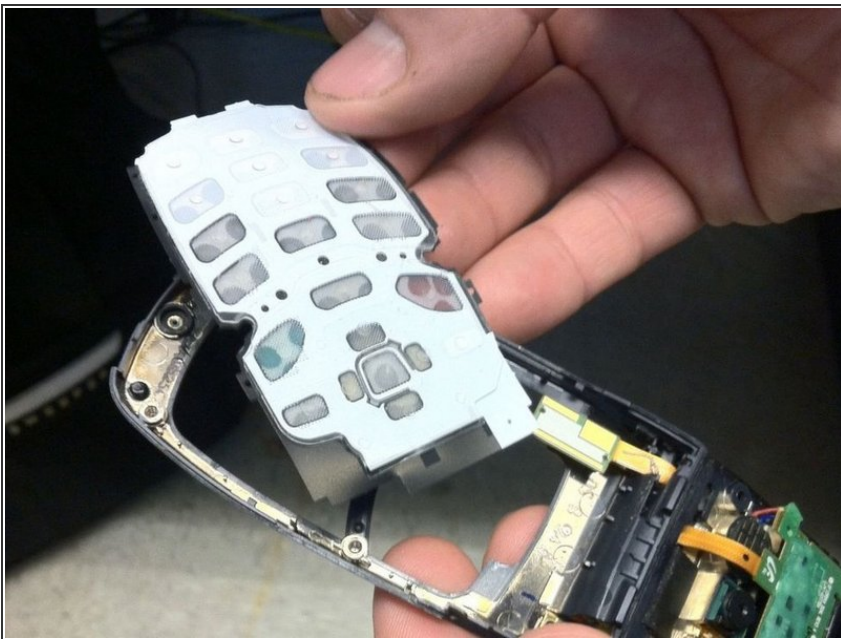


## Step 7



- Using flathead screwdriver, lift motherboard away and remove from phone.

## Step 8



- Lift, remove and replace key pad.

To reassemble your device, follow these instructions in reverse order.