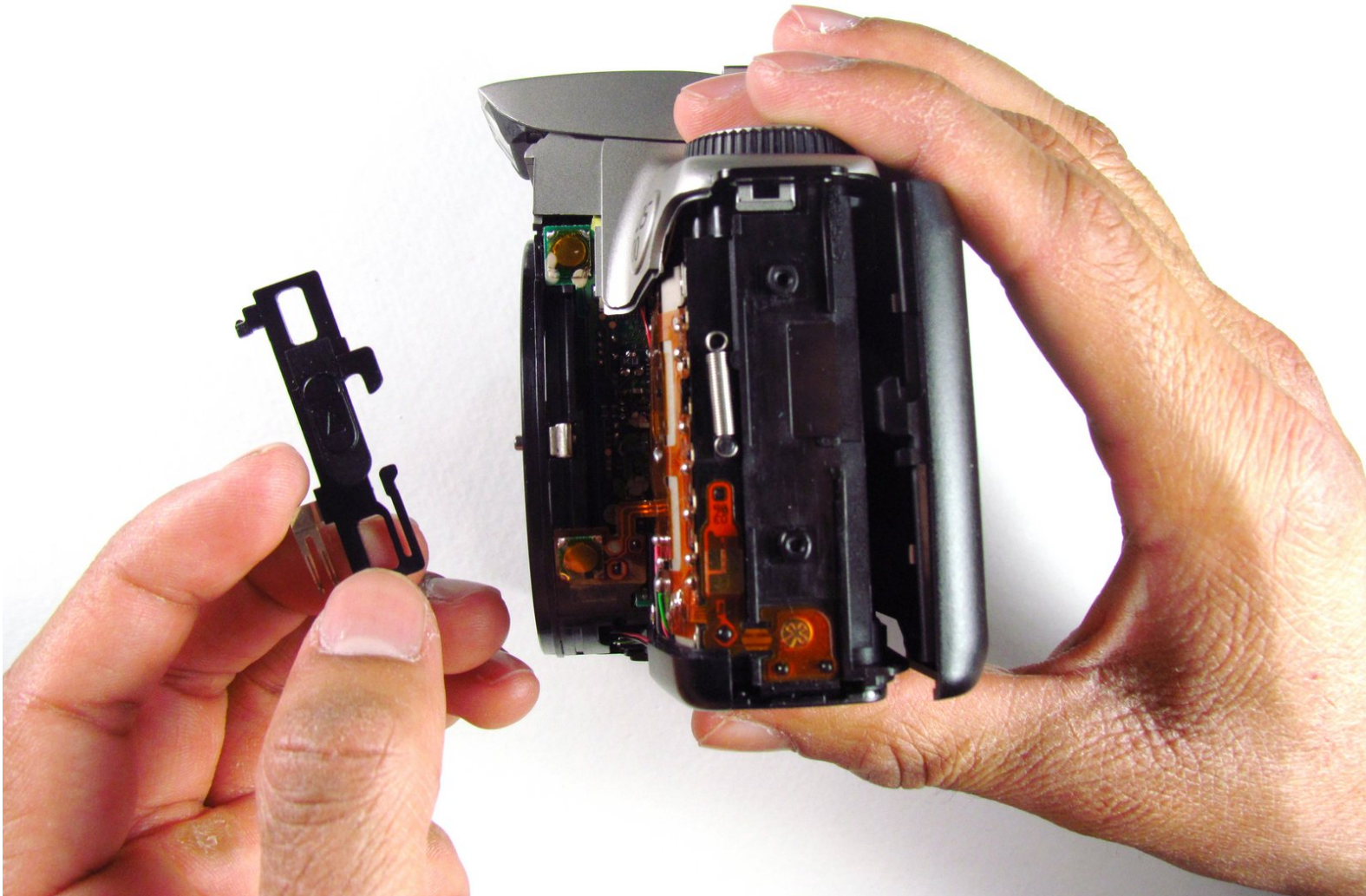




Canon EOS 300 Back Lock-Release Lever Replacement

This guide shows how to remove and replace the back lock-release lever.

Written By: Jordan Tang



INTRODUCTION

If the back lock-release lever is loose or broken, this will allow you to attempt to replace it.



TOOLS:

- [Phillips #00 Screwdriver](#) (1)
-

Step 1 — Batteries



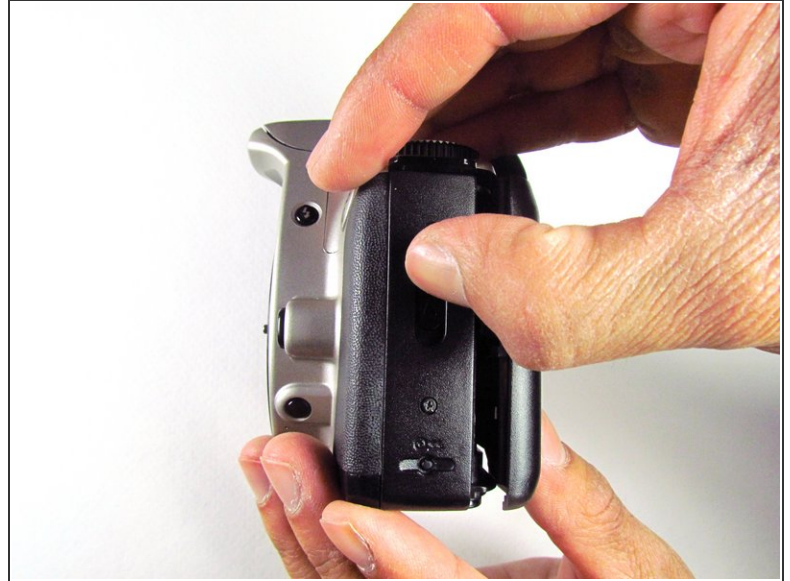
- Open up the battery door.

Step 2



- Remove the batteries from the camera by sliding them out into your palm.

Step 3 — Side Panel with Lever



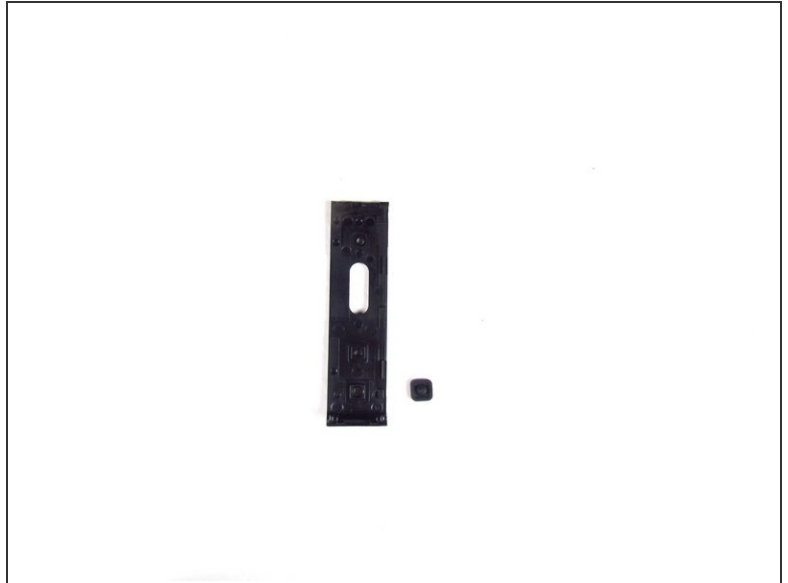
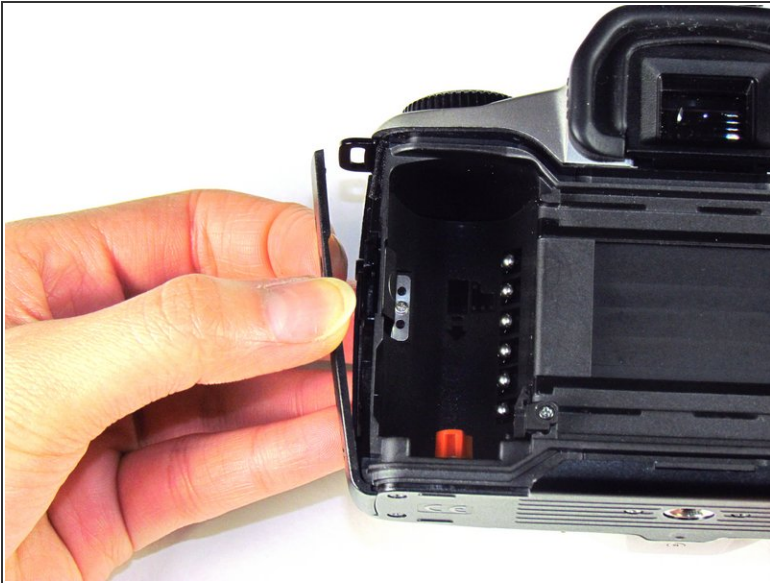
- Release the side latch to open the back panel.

Step 4



- Remove the two black 4.5mm screws above and below the latch.

Step 5



- Using your finger, carefully pry open the side panel from the top of camera.
- Pull panel downwards to remove.
- ⓘ Make sure to keep track of the small black piece of rubber under the latch.

Step 6 — Front Panel



- Remove the two silver 6mm Phillips #1 screws.

Step 7



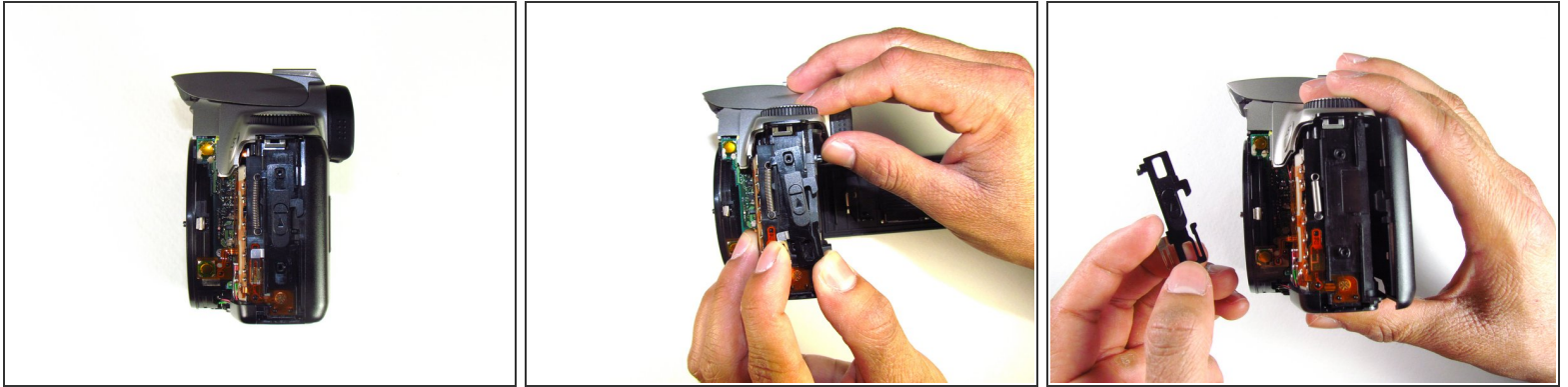
- Flip camera over to the bottom.
- Remove the one 5mm Phillips #1 silver screw.

Step 8



- Remove the front panel by pulling away from the side with the lever.

Step 9 — Back Lock-Release Lever



- Pull off the lever by pushing up from the bottom and pulling away from the bottom.

To reassemble your device, follow these instructions in reverse order.