



# MacBook Unibody Model A1342 Upper Case Replacement

Written By: Andrew Bookholt



# INTRODUCTION

Replacing the upper case requires the removal of nearly every component in your MacBook.

[video: <http://www.youtube.com/watch?v=ovuyKF53dkM>]



## TOOLS:

- [Phillips #00 Screwdriver](#) (1)
- [Spudger](#) (1)
- [T6 Torx Screwdriver](#) (1)
- [TR8 Torx Security Screwdriver](#) (1)
- [Y1 Tri-point Screwdriver](#) (1)



## PARTS:

- [MacBook Unibody \(Model No. A1342\) Upper Case](#) (1)
- [MacBook Unibody \(Model A1342\) Trackpad](#) (1)

## Step 1 — Lower Case



- Remove the eight 4 mm Phillips screws securing the lower case to the MacBook.

## Step 2



**⚠** The lower case is constructed of rubber-coated aluminum. Do not excessively bend the aluminum during removal, as any permanent deformation will cause tolerance issues after reassembly.

- Slightly lift the lower case near the vent opening.
- Continue running your fingers between the lower and upper cases until the upper case pops off its retaining clips.

**i** The location of these three clips is shown in the third picture.

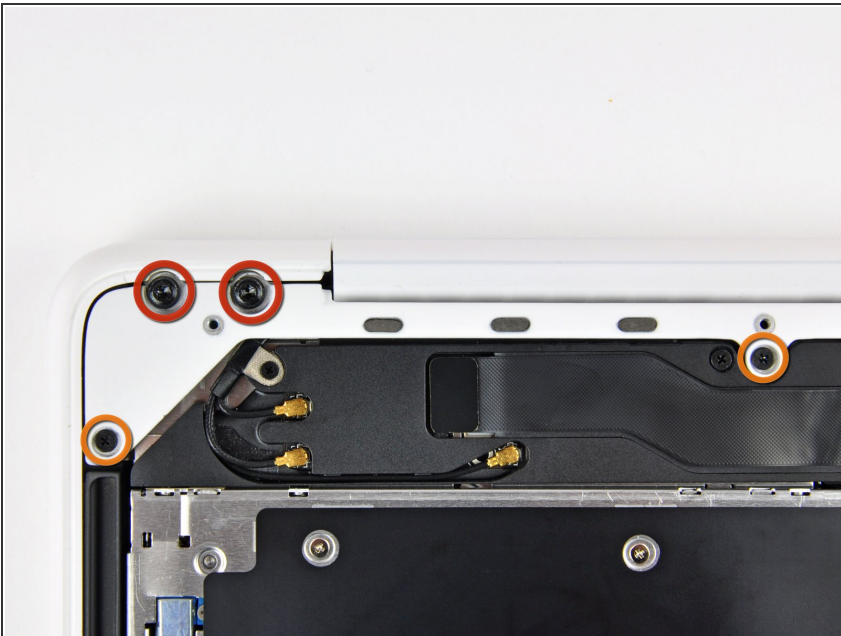
## Step 3 — Battery



**⚠** For precautionary purposes, we advise that you disconnect the battery connector from the logic board to avoid any electrical discharge. This step is **optional** and is not required.

- Use the flat end of a spudger to lift the battery connector up out of its socket on the logic board.
- ⓘ It may be easier to use your fingernails to lift up on both sides of the connector.

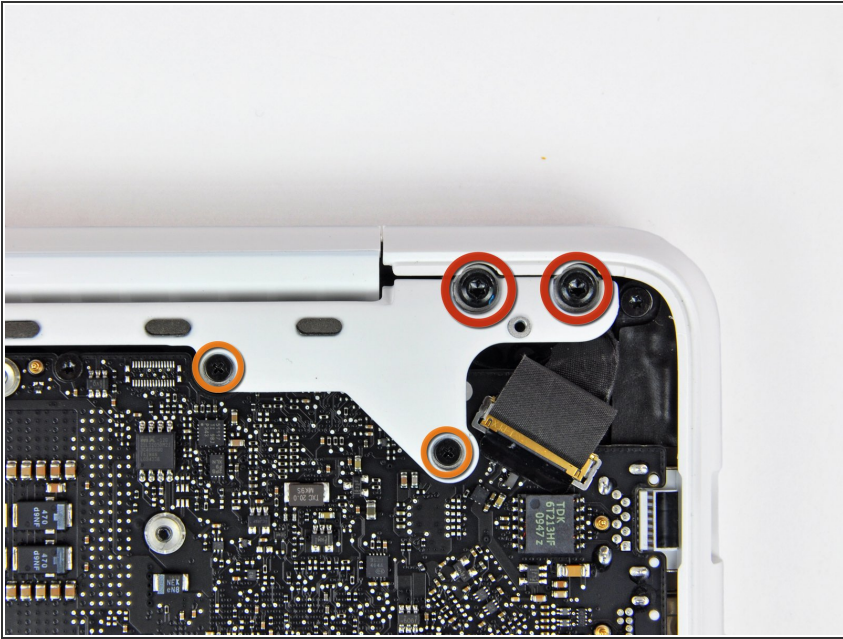
## Step 4 — Rear Vent



- Remove the following screws from the optical drive side of the rear vent:
  - Two 10 mm T8 Torx
  - Two 5.2 mm Phillips



## Step 5



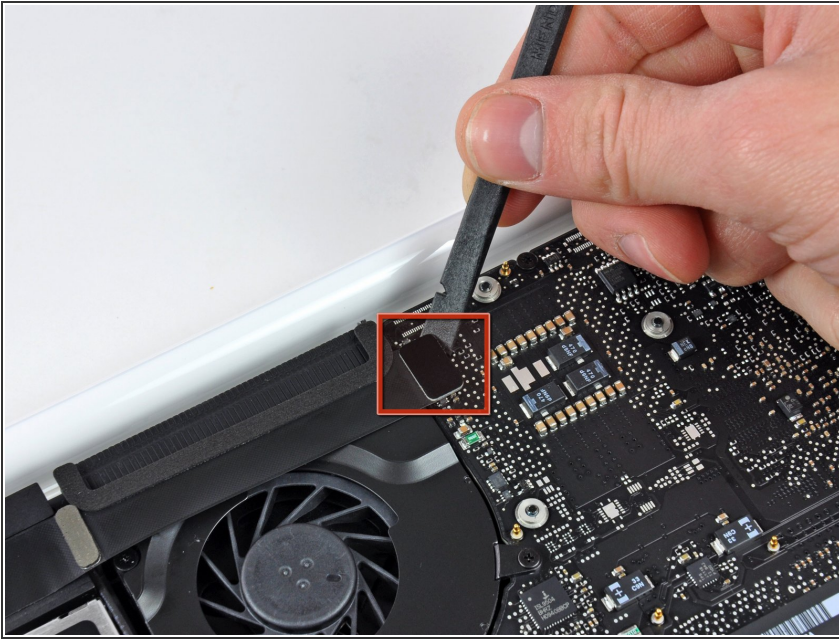
- Remove the following screws from the port side of rear vent:
  - Two 10 mm T8 Torx
  - Two 5.2 mm Phillips

## Step 6



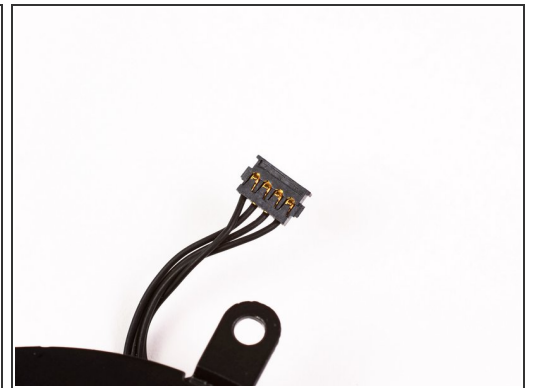
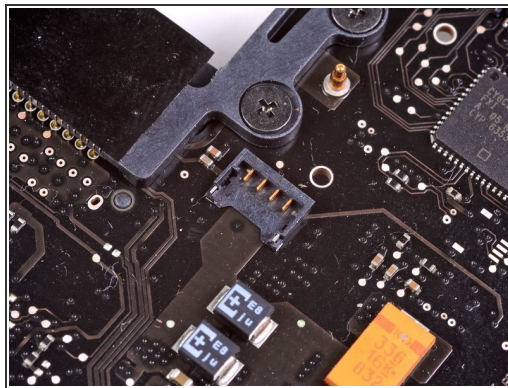
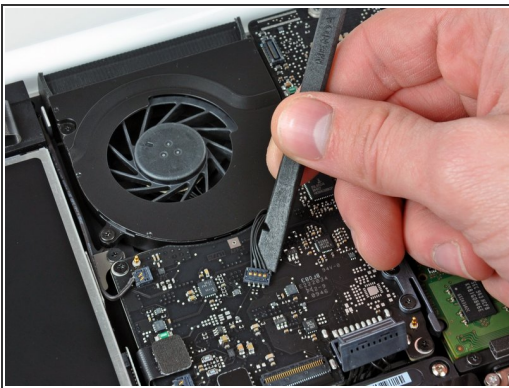
- Carefully lift the rear vent out of the upper case.

## Step 7 — Logic Board



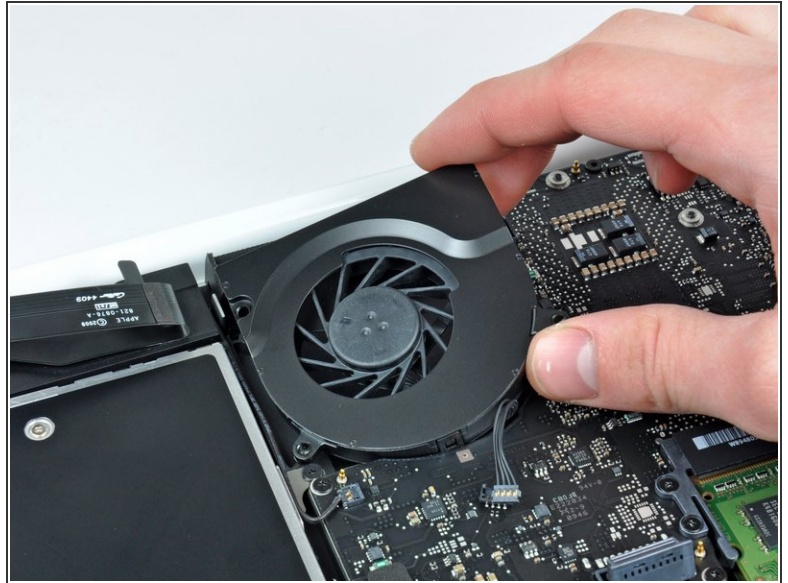
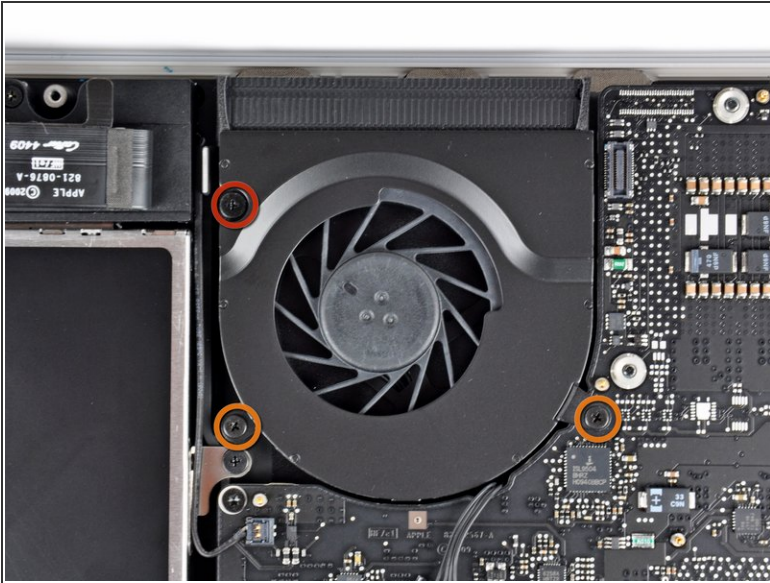
- Use the flat end of a spudger to pry the AirPort/Bluetooth ribbon cable up off the logic board.

## Step 8



- Use a spudger to pry the fan connector straight up and out of its socket on the logic board.
- ⓘ It is useful to twist the spudger axially from beneath the fan cable wires to release the connector.
- ⚠ The fan socket and the fan connector can be seen in the second and third pictures. Be careful not to break the plastic fan socket off the logic board as you use your spudger to lift the fan connector straight up and out of its socket. The layout of the logic board shown in the second picture may look slightly different than your machine but the fan socket is the same.

## Step 9




- Remove the following three screws securing the fan to the upper case:
  - One 7.1 mm Phillips screw.
  - Two 5 mm Phillips screws.
- Lift the fan out of the upper case.



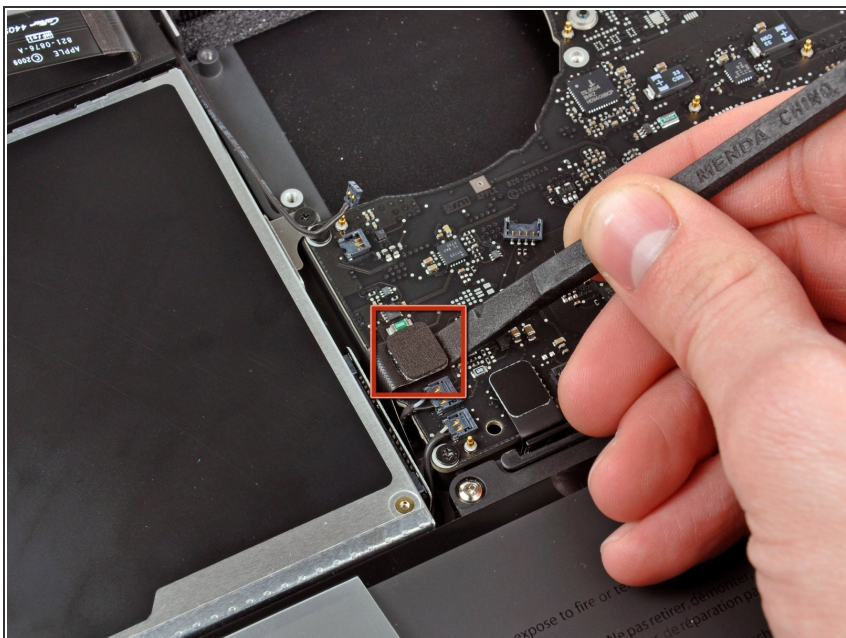
## Step 10



- Carefully pry the delicate rear speaker connector up off the logic board. These small L/R speaker connectors are quite easily broken.

 Use extreme caution; this connector is easily destroyed.

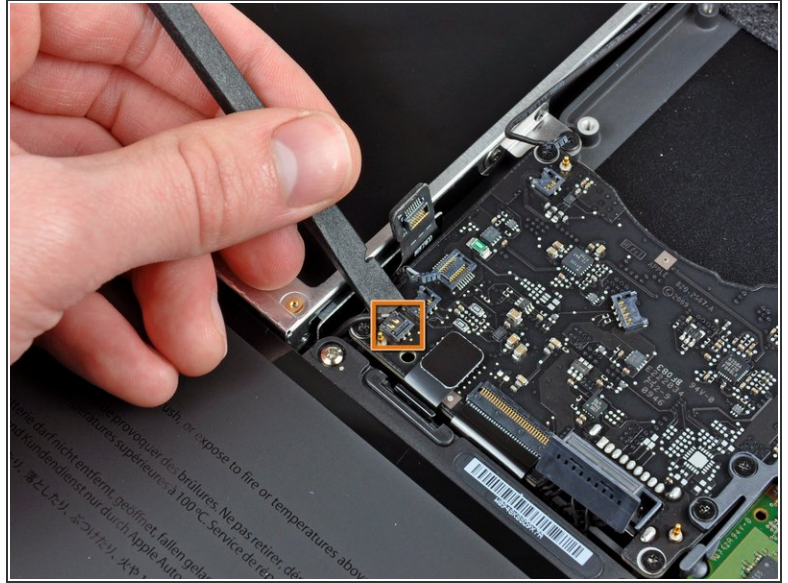
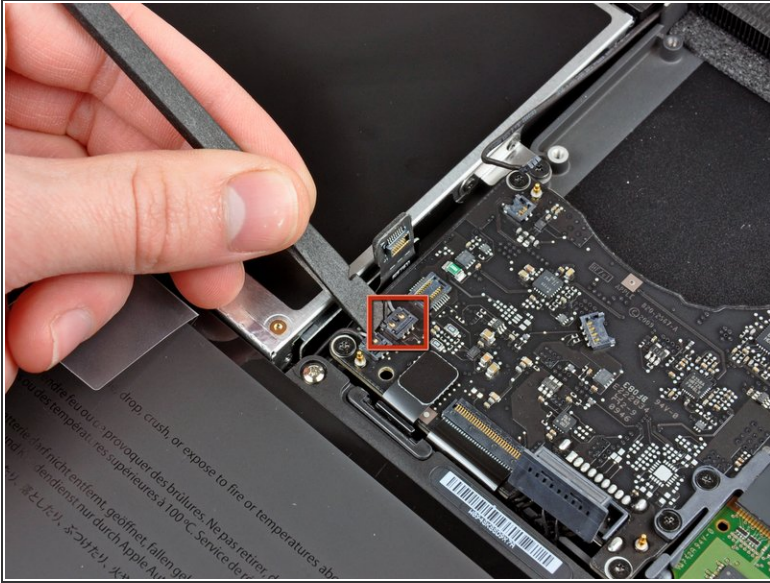
## Step 11



- Use the flat end of a spudger to pry the optical drive connector up off the logic board.



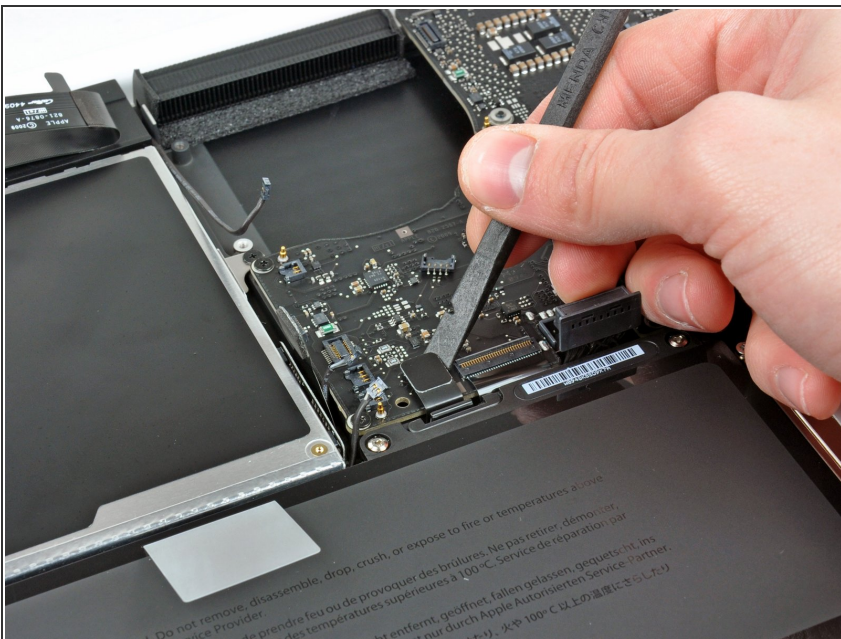
## Step 12



- Use a spudger to pry the right speaker connector and sleep LED connector up off the logic board.

⚠ These connectors are very delicate and easily broken.

## Step 13



- Use the flat end of a spudger to pry the trackpad ribbon cable connector up off the logic board.

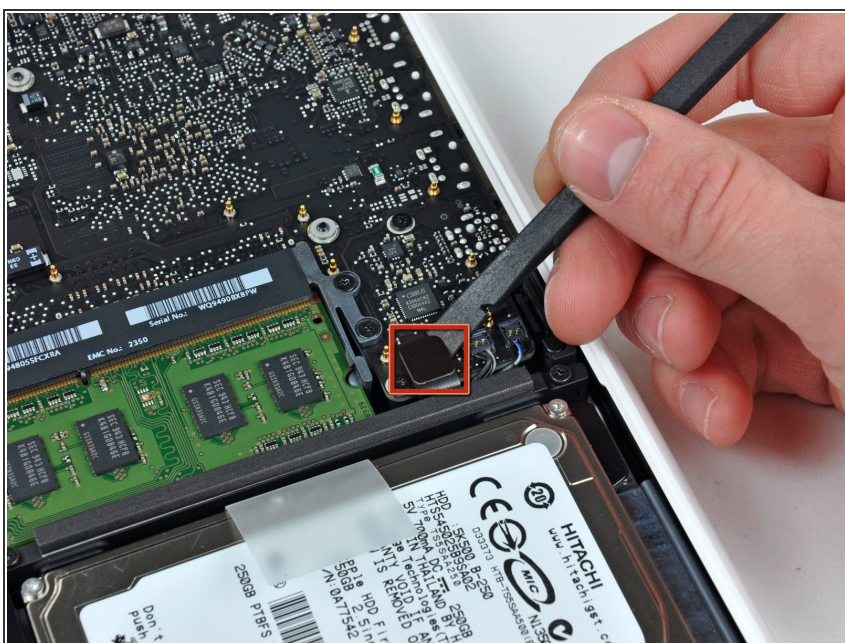


## Step 14



- Use your fingernail to flip up the locking flap on the ZIF socket for the keyboard ribbon cable.
- Use the tip of a spudger to slide the keyboard ribbon cable out of its socket.

## Step 15



- Use the flat end of a spudger to pry the hard drive cable connector up off the logic board.



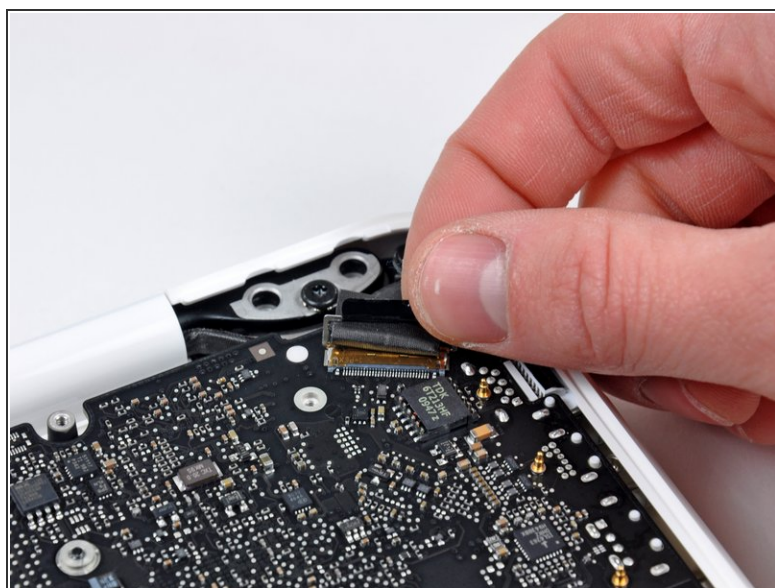
## Step 16



- Use a spudger to pry the left speaker connector and microphone connector up off the logic board.

⚠ These connectors are very delicate and easily broken.

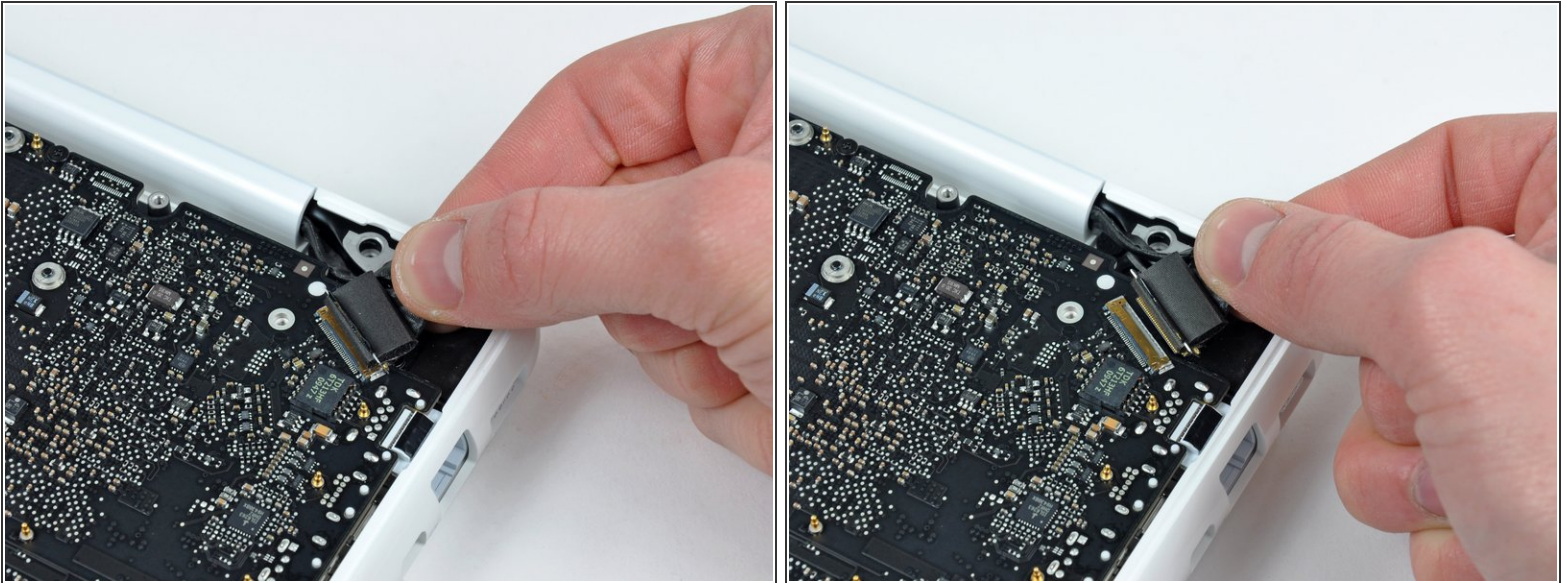
## Step 17



- Grab the plastic pull tab secured to the display data cable lock and rotate it toward the DC-In side of the computer.



## Step 18

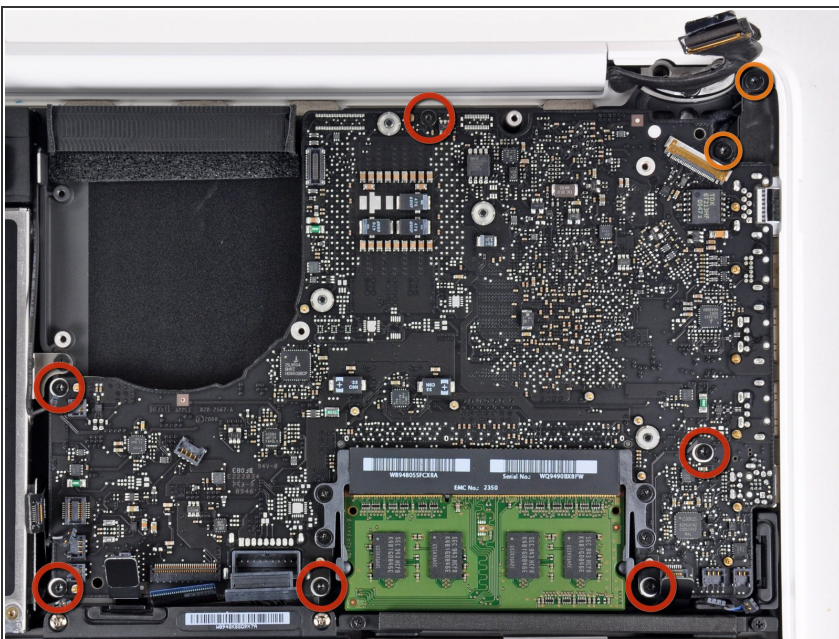


- Gently pull the display data cable connector away from its socket on the logic board.

- ⓘ Pull the socket parallel to the face of the logic board.

⚠ The display data cable socket is made of very thin metal and is easily bent. Be sure to pull the connector straight away from its socket.

## Step 19



- Remove the six 4.1 to 4.4 mm T6 Torx screws securing the logic board to the upper case.
- Remove the two 4.1 to 4.5 mm T6 Torx screws securing the MagSafe board to the upper case.
- On some models, these screws may be T7. Be careful not to strip away the head with a smaller bit.



## Step 20



- Lift the side of the logic board opposite the ports out of the upper case.
- Rotate the logic board away from the upper case until the ports clear the lip molded in the upper case.
- Pull the logic board and MagSafe board away from the edge of the upper case as one piece.
- ☑ The MagSafe board may get accidentally disconnected during this process. As a precaution, be sure the MagSafe board connector is securely seated in its socket before lowering the logic board back into the upper case.
- ☑ Before lowering the logic board back into the upper case, be sure the left speaker and microphone cables are seated in their channels cut into the upper case (as seen in the third picture).

## Step 21 — Upper Case



- Remove the two Phillips screws securing the hard drive bracket to the upper case.
- ⓘ These screws are captive in the hard drive bracket.
- Remove the hard drive bracket from the upper case.

## Step 22



- Lift the free side of the hard drive and pull it away from the side of the upper case.
- ⓘ The hard drive is still attached to the upper case by the hard drive cable.

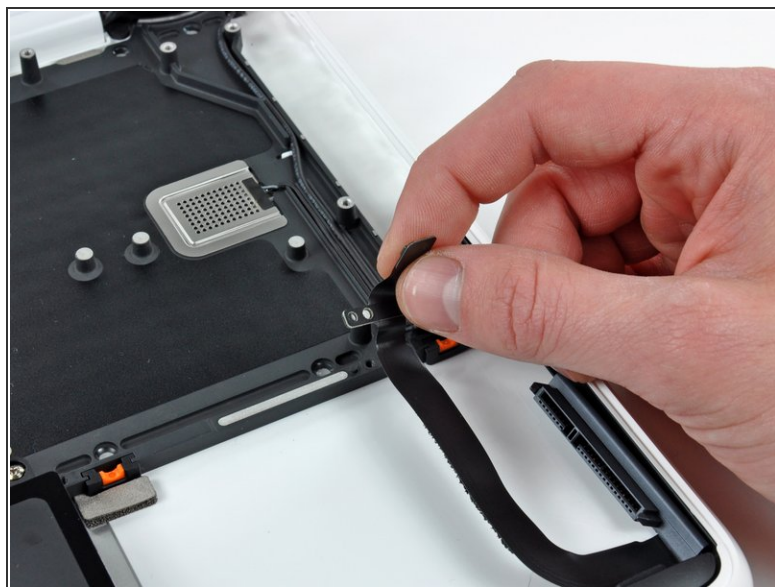


## Step 23



- Disconnect the hard drive by pulling the hard drive cable connector away from its socket on the hard drive.

## Step 24



- Remove the single 3.1 mm Phillips screw securing the hard drive cable to the upper case.
- Lift the hard drive cable out of the upper case.

## Step 25



- Remove two 5 mm Tri-Wing screws securing the battery to the upper case near the battery connector.

## Step 26



- Use the tip of a spudger to carefully peel back the finger of the warning label to reveal a hidden Tri-Wing screw.
- Remove the 5 mm Tri-Wing screw securing the battery to the upper case.



## Step 27



- Remove three 3.1 mm Phillips screws securing the battery near the edge of the upper case.
- ☞ When reinstalling the battery, be sure to install these three screws before proceeding to fasten the Tri-Wing screws. Keep an eye on the keyboard ribbon cable, you may need to use the flat of the spudger to hold the ribbon cable out of the path of the battery as it swings down into place.

## Step 28



- Lift the battery near its connector and remove it from the upper case.
- ⚠ When replacing the battery, take care that the keyboard ribbon cable is not trapped underneath.

## Step 29



- Use the tip of a spudger to pry the AirPort/Bluetooth antenna connectors (three total) up off the AirPort/Bluetooth board.
- If necessary, de-route the long antenna cable from its slot in the rear speaker housing.

## Step 30



- Remove the single 3 mm Phillips screw securing the antenna ground straps to the rear speaker housing.

## Step 31



- Remove the single 2.2 mm Phillips screw inserted horizontally into the side of the optical drive.

## Step 32



- Remove the single 12 mm Phillips screw securing the rear speaker to the upper case.

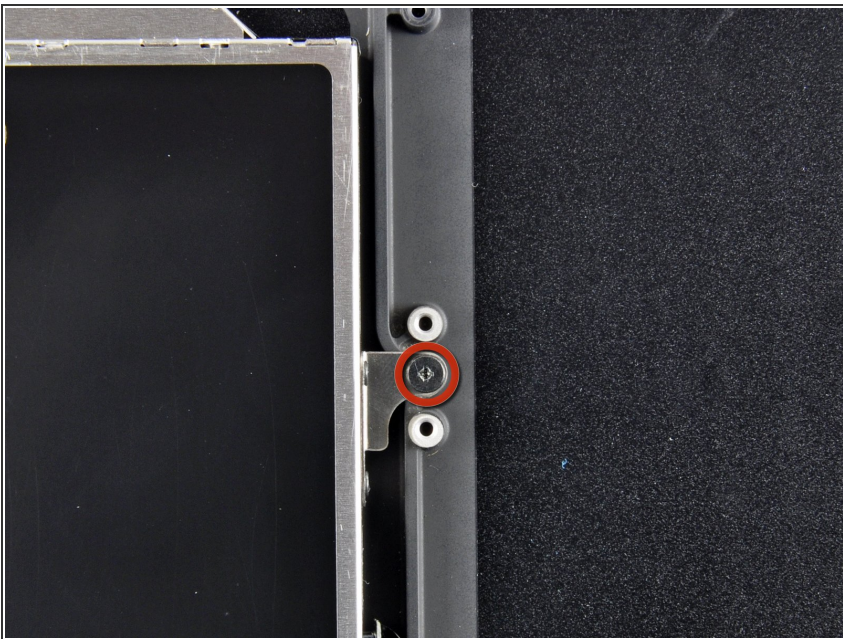


## Step 33



- Remove the rear speaker assembly from your MacBook.

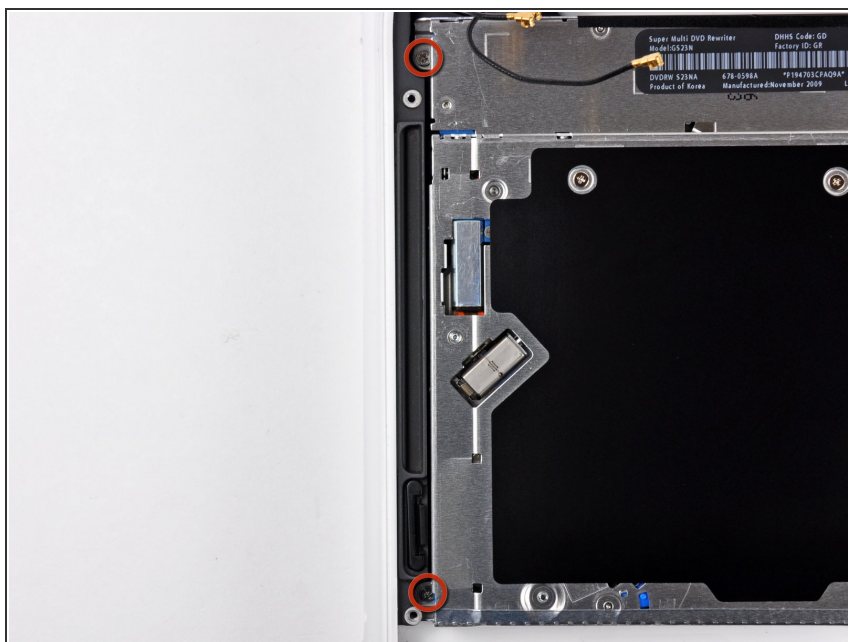
## Step 34



- Remove the single 4.5 mm Phillips screw securing the inner edge of the optical drive to the upper case.



## Step 35



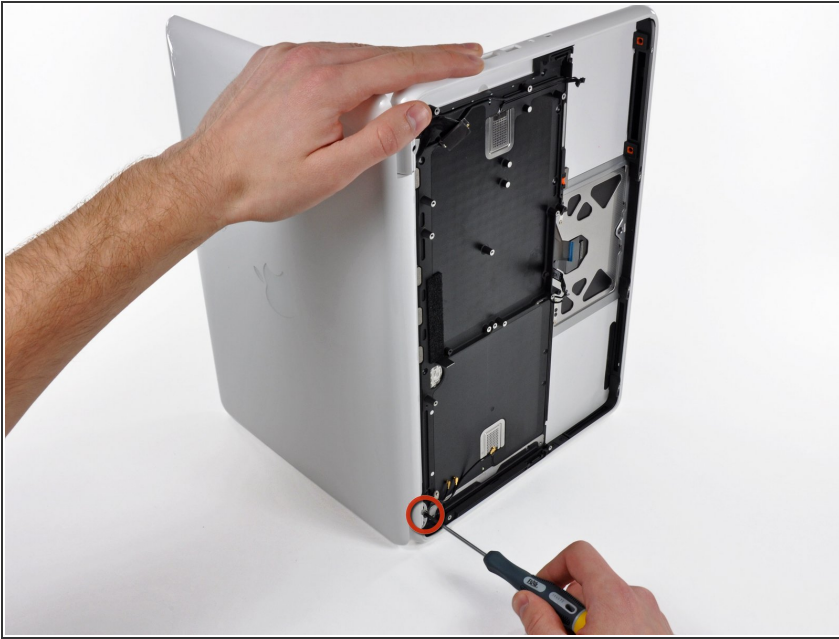
- Remove the two 2.5 mm Phillips screws securing the optical drive to the upper case near the optical drive opening.

## Step 36



- Lift the optical drive near its connector and pull it away from the upper case to remove it from the computer.

## Step 37



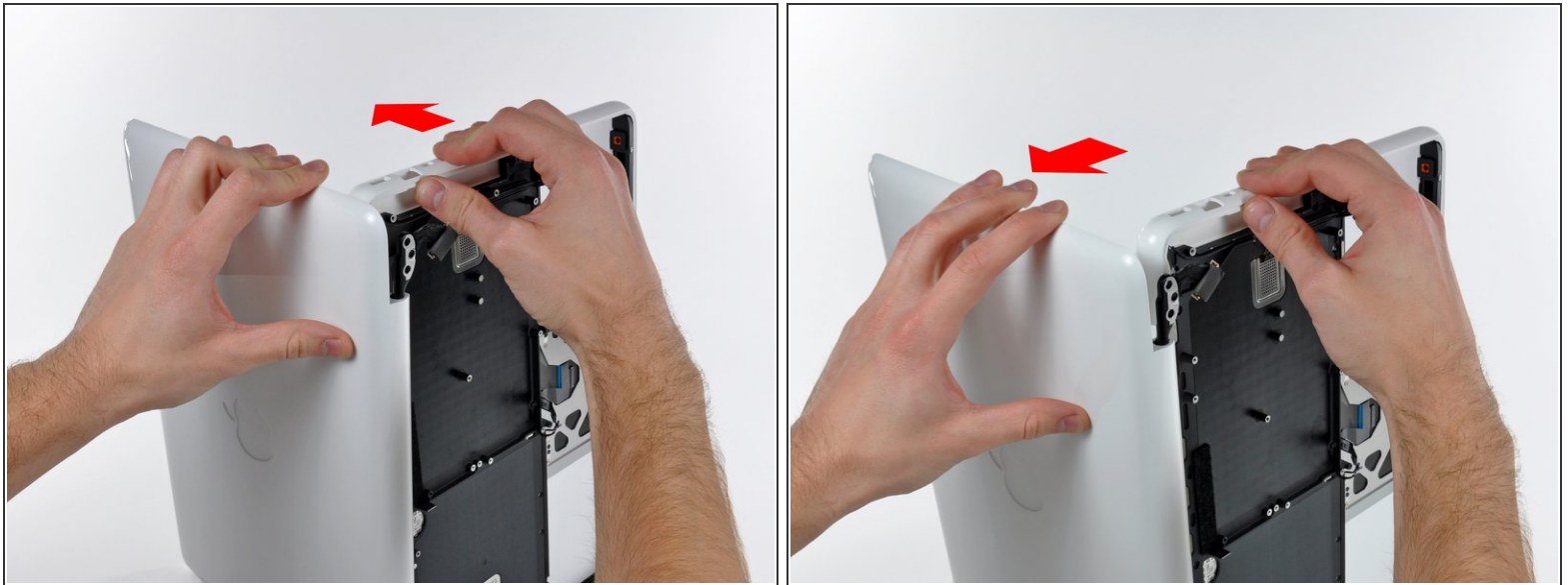
- Open your MacBook so the display is perpendicular to the upper case.
- Place your opened MacBook on a table as pictured.
- While holding the display and upper case together with your left hand, remove the remaining T8 Torx screw from the lower display bracket.
- Before retightening the T8 Torx screws, close the display and adjust it so that the back edges of the upper case and display are aligned and the gaps at the ends of the hinge are equal.

## Step 38



- ⚠ Be sure to hold the display and upper case together with your left hand. Failure to do so may cause the freed display/upper case to fall, potentially damaging each component.
- Remove the last remaining T8 Torx screw securing the display to the upper case.

## Step 39



- Grab the upper case with your right hand and rotate it slightly toward the top of the display so the upper display bracket clears the edge of the upper case.
- ⓘ The display data cable may cause the upper display bracket to get caught on the upper case. It may be helpful to slightly rotate the upper case away from the display for more clearance.
- Rotate the display slightly away from the upper case.



## Step 40



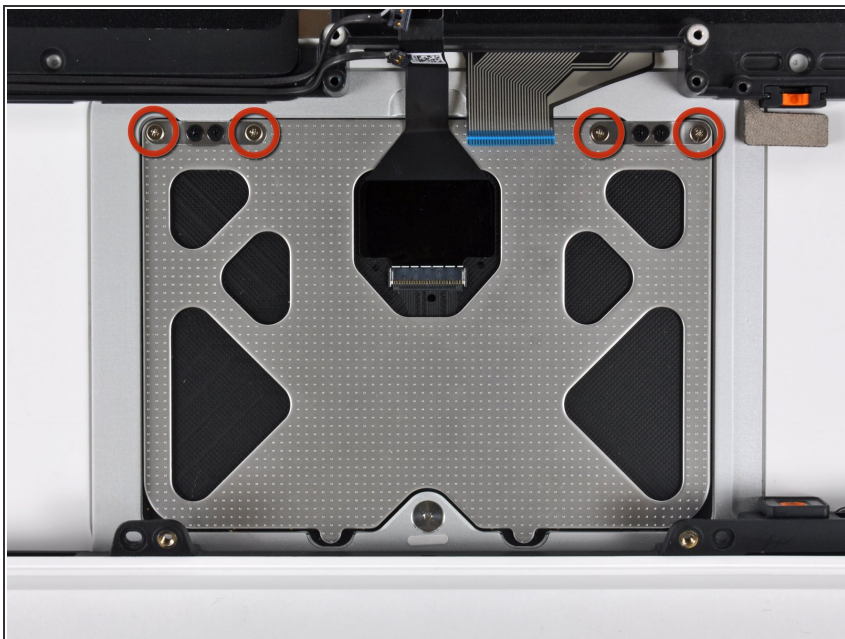
- Lift the display up and away from the upper case, minding any brackets or cables that may get caught.

## Step 41



- There are four orange and black rubber inserts that the hard drive sits in. One side has full circles and the other side has half circles. (The other side of the half circles are located on the hard drive bracket that was previously removed).
- The new upper case may not have these inserts. Be sure to remove them from the old and insert into the new.
- The inserts are easily pried out with a spudger or a flat tipped screwdriver. They are not glued in, but instead have notched sides to hold them in place.

## Step 42 — Upper Case



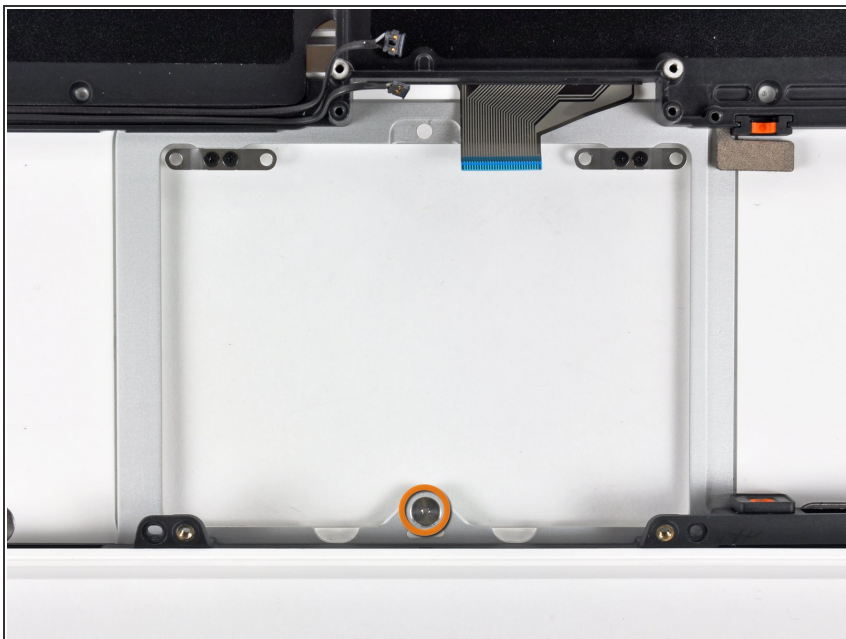
- Remove the four 1.3 mm Phillips screws securing the upper edge of the trackpad to the upper case.

## Step 43



- Carefully tilt the trackpad away from the keyboard side of the upper case.
- Pull the trackpad away from its opening in the upper case to clear the two mounting tabs on its lower edge.

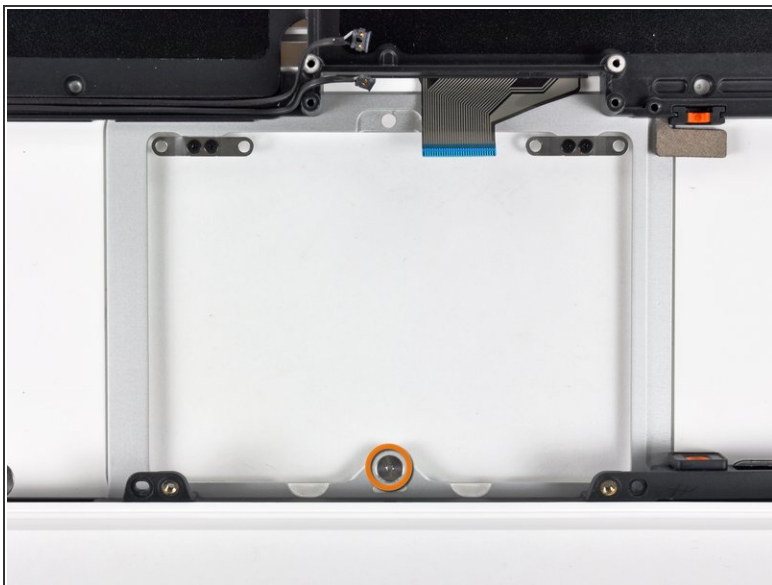
## Step 44



- Remove the 1 mm T6 Torx set screw near the front edge of the upper case.



## Step 45



- ⓘ Use the following steps to install the old trackpad into your new upper case.
  - Reinstall the T6 Torx set screw until it is flush with the aluminum bracket surrounding the trackpad.
  - Place the trackpad back into its void in the upper case, being sure the lower tabs are inserted underneath the keyboard side of the upper case.
- ⓘ Be sure the trackpad ribbon cable is not pinched between the trackpad and the upper case.

## Step 46



- Reinstall the four silver Phillips screws securing the trackpad to its steel brackets.
- Loosen all four silver screws about 1/16th of a turn.
- Flip the upper case over and adjust the position of the trackpad until the gap between the trackpad and the upper case is evenly spaced around the perimeter of the trackpad.
- Tighten the four silver screws to hold the trackpad in place.
- ⓘ Repeat this process until the trackpad is perfectly positioned in its void on the upper case.



## Step 47



- While repeatedly pressing the trackpad to simulate clicking, tighten the T6 Torx set screw until the trackpad no longer wiggles freely.

**⚠ Do not over-tighten the set screw, as the button will cease to click at a certain point. Adjust the set screw until the movable side of the trackpad has minimal play.**

To reassemble your device, follow these instructions in reverse order.