



# Conair Cord-Keeper 169XR On/Off Switch Replacement

If your Conair Cord-Keeper 169XR dryer isn't...

Written By: Candace



## INTRODUCTION

If your Conair Cord-Keeper 169XR dryer isn't turning on, the back of the On/Off button that engages the power may be broken.

---

### TOOLS:

Phillips #2 Screwdriver (1)

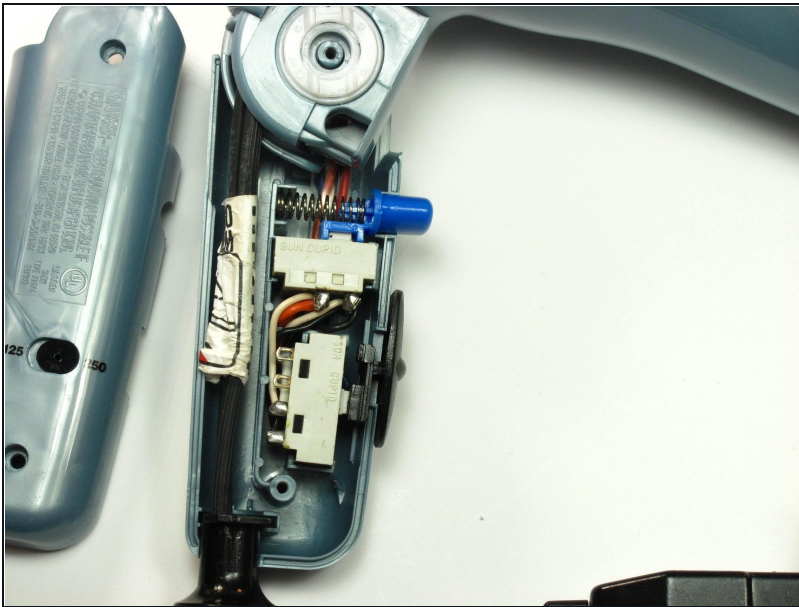
---

### Step 1 — Handle Cover



- Unscrew the **two 18 mm long Phillips #2** screws on the side of the hair dryer.

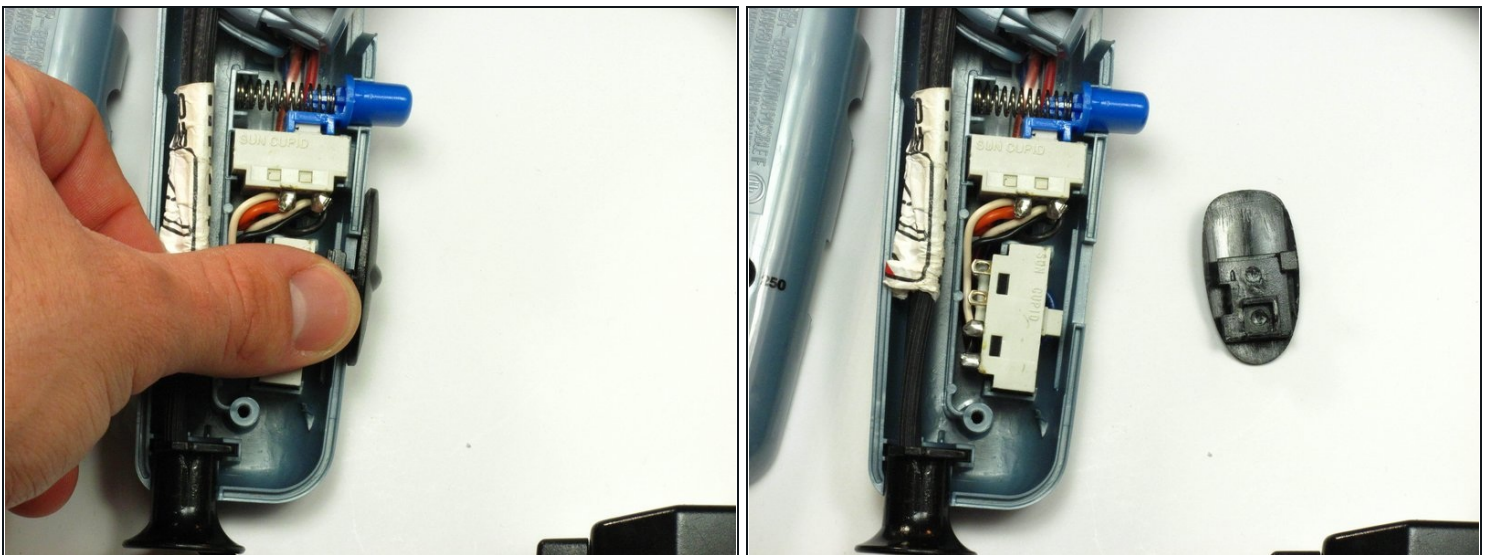
## Step 2



**⚠ Be cautious of pieces that can possibly fall out when removing the face of the handle.**

- Once you have taken the screws out, take the top half of the handle off by lifting it off of the dryer.

## Step 3 — On/Off Switch



- Now take out the On/Off switch by gently pulling it out towards you and lightly pushing it to the right with your finger until it comes out of the groove it is resting in.
- Once the new switch is in place you can put the dryer back together.

---

To reassemble your device, follow these instructions in reverse order.