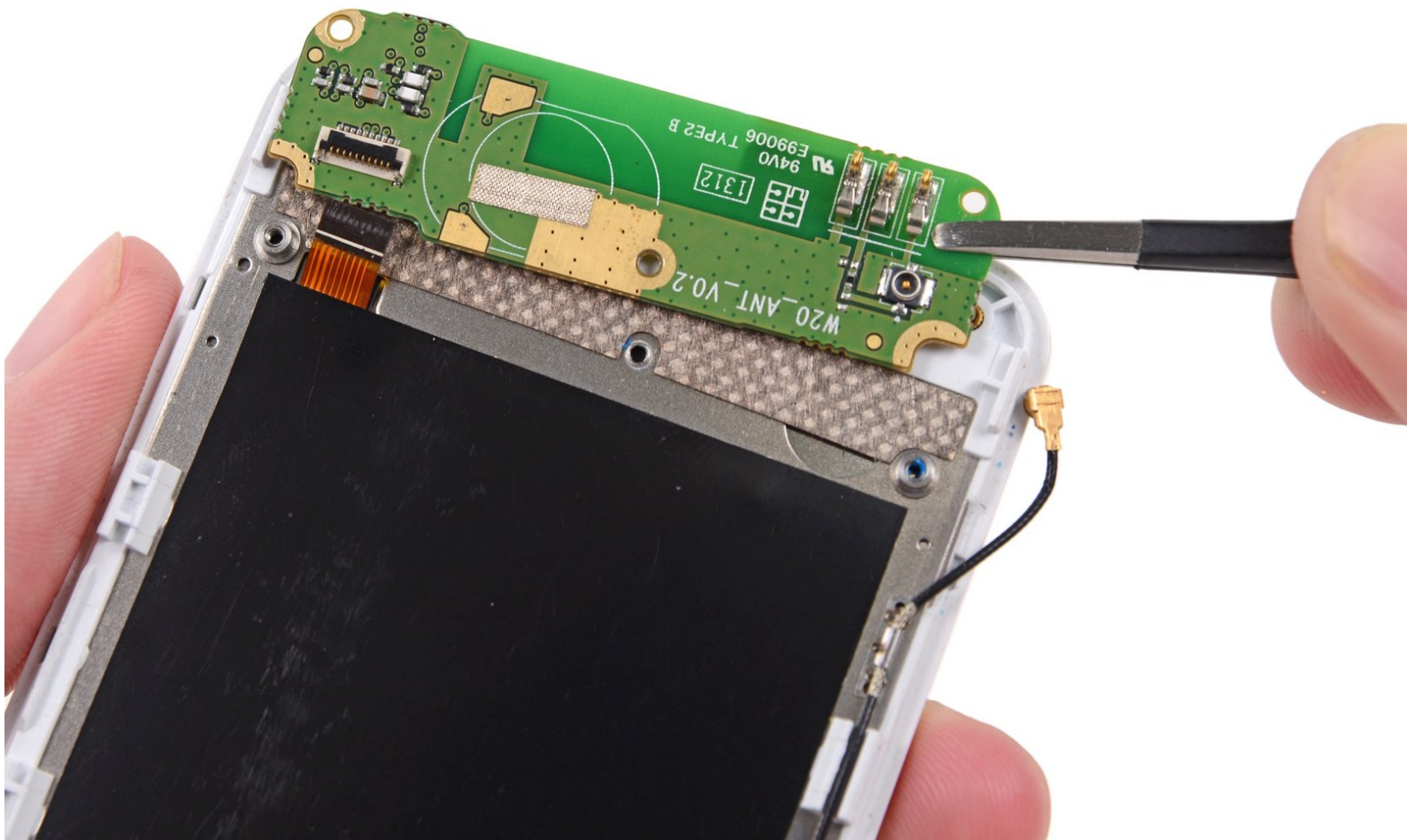




Fairphone 1 Wi-Fi Antenna Daughterboard Replacement

Replace the Wi-Fi Antenna Daughterboard in your Fairphone.

Written By: Andrew Optimus Goldheart



INTRODUCTION


Use this guide to replace the Wi-Fi antenna daughterboard in your Fairphone.

TOOLS:

- [iFixit Opening Picks \(Set of 6\)](#) (1)
 - [Phillips #000 Screwdriver](#) (1)
 - [Spudger](#) (1)
 - [Tweezers](#) (1)
-

Step 1 — Back Cover



 There is a small indentation in the side of the phone near the bottom of the back cover.

- With the indentation as leverage, use your fingernail to pry the bottom portion of the back cover from the phone.

Step 2



- Slide the back cover down and remove it from the phone.

Step 3 — Battery



- i** There is a small indentation in the back of the phone just below the battery.
- Use a fingernail in this indentation to push the battery toward the top of the phone
 - Pull the battery out away from the phone.

Step 4



- Remove the battery from your Fairphone.

Step 5 — SIM and MicroSD Card



- Use your finger to slide the SIM card straight down out of its tray.
- Remove the SIM card from your Fairphone.
- ⓘ Repeat this procedure if you have a second SIM card.

⚠ Be sure to remove all SIM cards before servicing your phone.

Step 6



- If you have a microSD card, use your finger to slide it straight out of its slot.
- Remove the microSD card from your phone.

Step 7 — Midframe Assembly



- Remove the five 3.9 mm Phillips #000 screws securing the midframe to the display assembly.

Step 8



- i** The midframe is secured to the display assembly by several small plastic clips.
- Use an opening pick to carefully pry the midframe away from the display assembly.
 - Start just below the volume rocker and work your way down toward the bottom of the phone, freeing the plastic clips along the side.

Step 9



- Carefully round the corner, separating the midframe from the display assembly.

Step 10



- i** After rounding the next corner, the midframe should be free along the bottom and the sides.

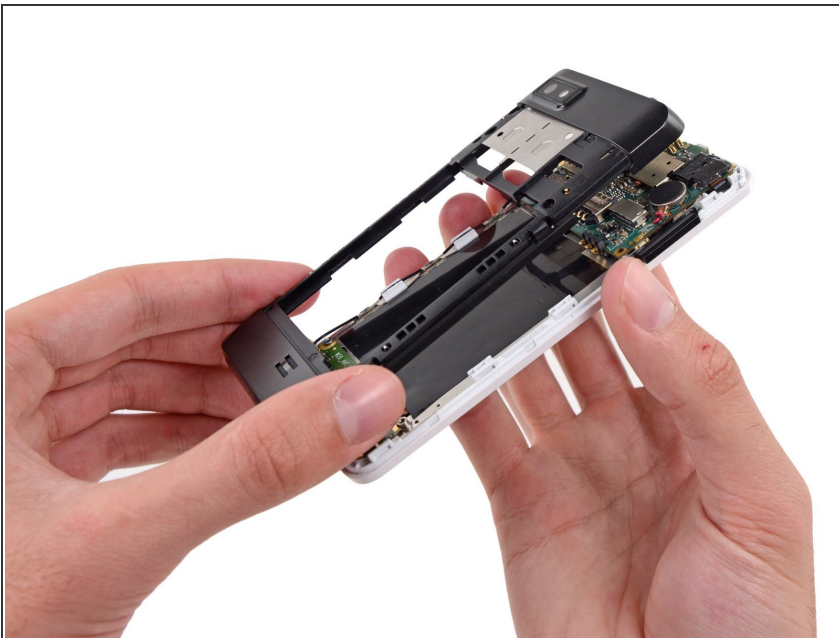
Step 11



- Run the opening pick and pry along the top seam.

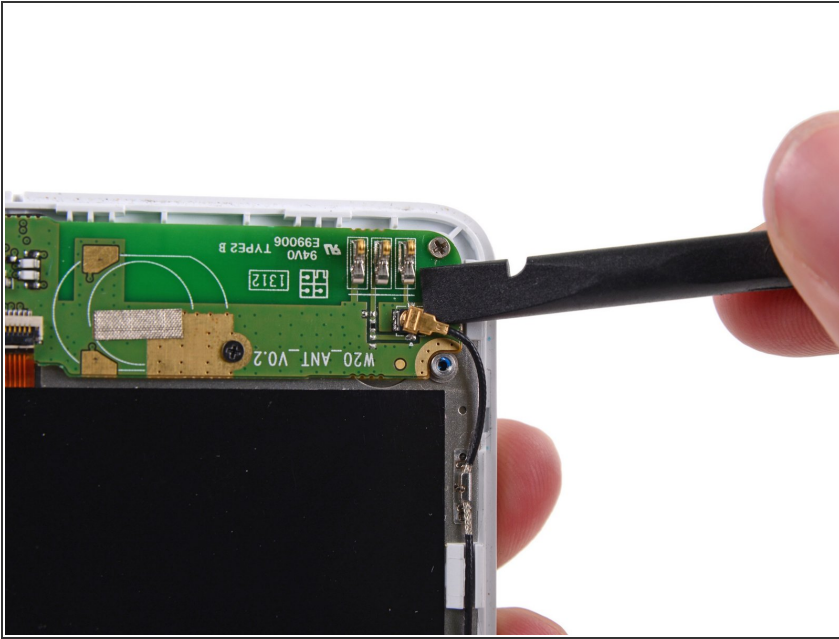
 To avoid bending or damaging the opening picks, do not pry near to the power switch, USB port, or headphone jack.

Step 12



- Separate any remaining clips and remove the midframe from the phone.

Step 13 — Wi-Fi Antenna Daughterboard



- Use the flat end of a spudger to disconnect the antenna cable connector.

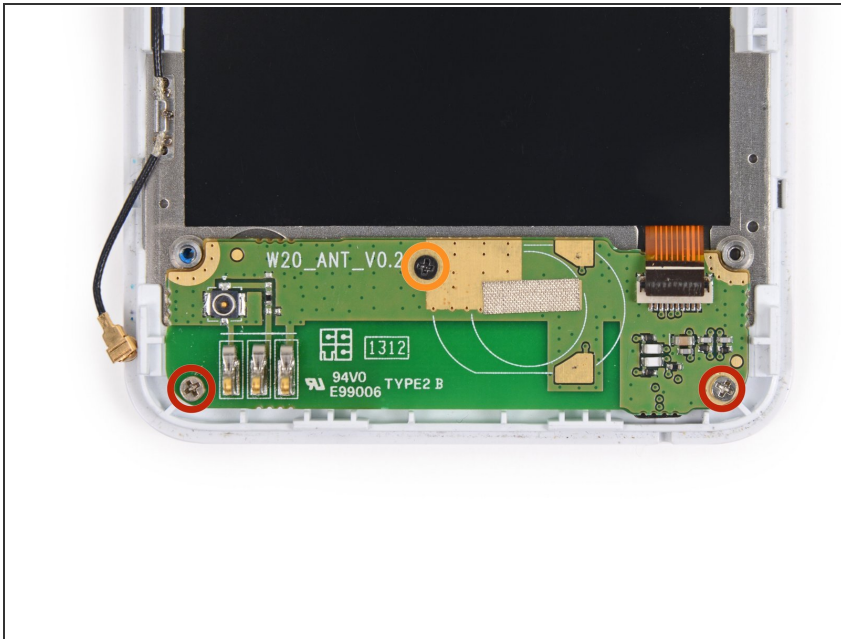
⚠ Be careful to pry on the connector, **not** the socket.

Step 14



- Use the tip of a spudger to flip open the tab on the daughterboard data cable ZIF connector.
- Use tweezers to pull the daughterboard data cable away from its socket.

Step 15



- Remove the following screws securing the Wi-Fi daughterboard to the display assembly:
 - Two 2.5 mm Phillips #000 screws
 - One 1.6 mm Phillips #000 screw

Step 16



i The Wi-Fi antenna daughterboard is held to the front assembly by mild adhesive.

- Use tweezers to gently pry the board up and remove it from the phone.

To reassemble your device, follow these instructions in reverse order.