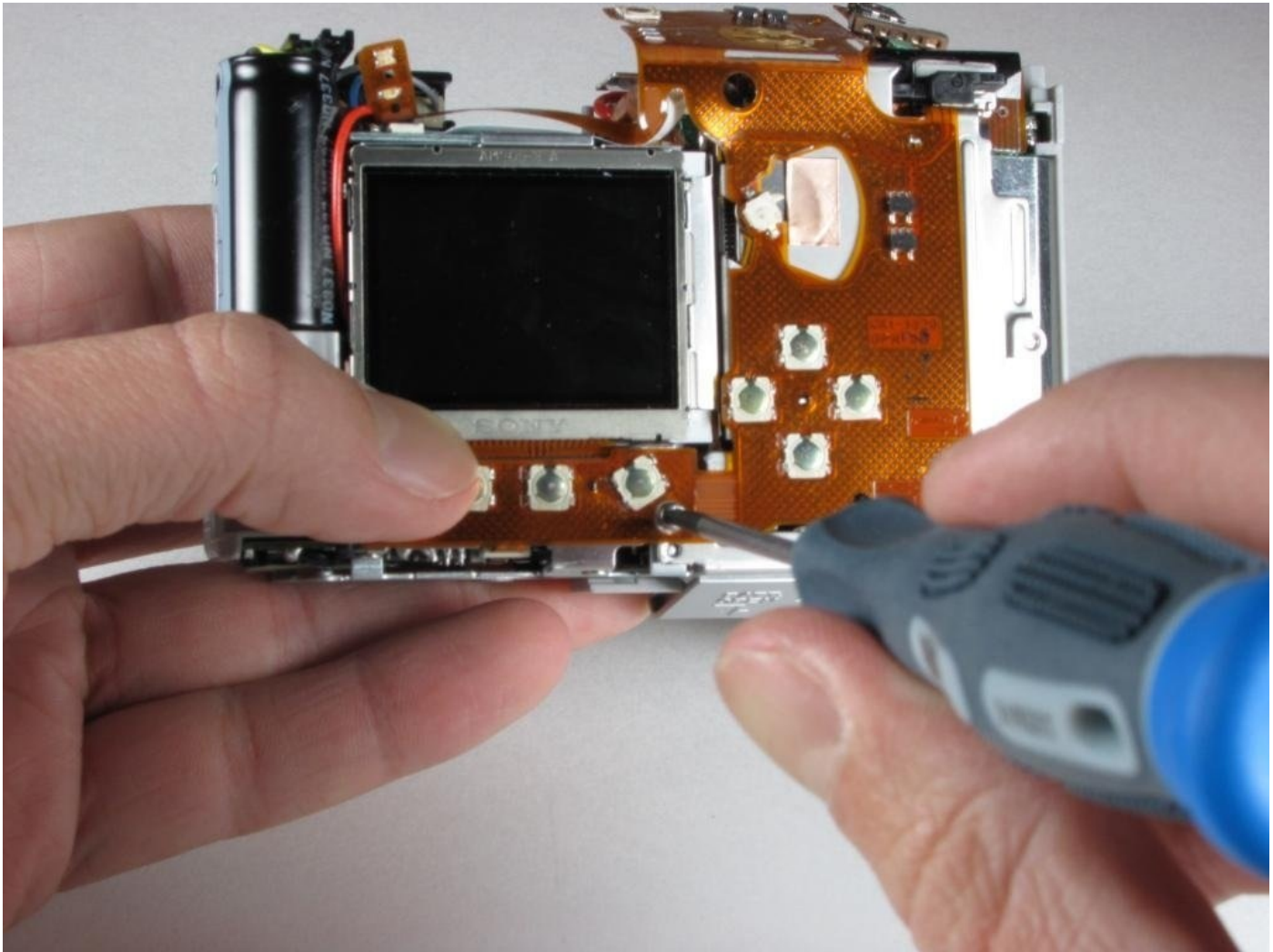




# Canon Powershot A70 Button Flex Assembly Replacement

Use this guide to remove the flex assembly on...

Written By: Brian



# INTRODUCTION

Use this guide to remove the flex assembly on your Canon Powershot A70 to either replace it or get underneath to reach another issue

The flex assembly of the Powershot is directly tied to the display usage of the camera and damage could render the device useless essentially making it a fancy brick with a lens. This is a delicate part of the A70 which does degrade over time by usage, weather, and general things like being dropped. You can also use this as a way to properly get under the flex in case the flex itself isn't the issue.

The parts involved are quite small so keep a nearby container handy and make sure to take special care on removing the battery in step 5 lest you end up with another required fix.

---

## TOOLS:

[iFixit Opening Tool](#) (1)

[Phillips #00 Screwdriver](#) (1)

---

## Step 1 — Shutter/Speaker Panel



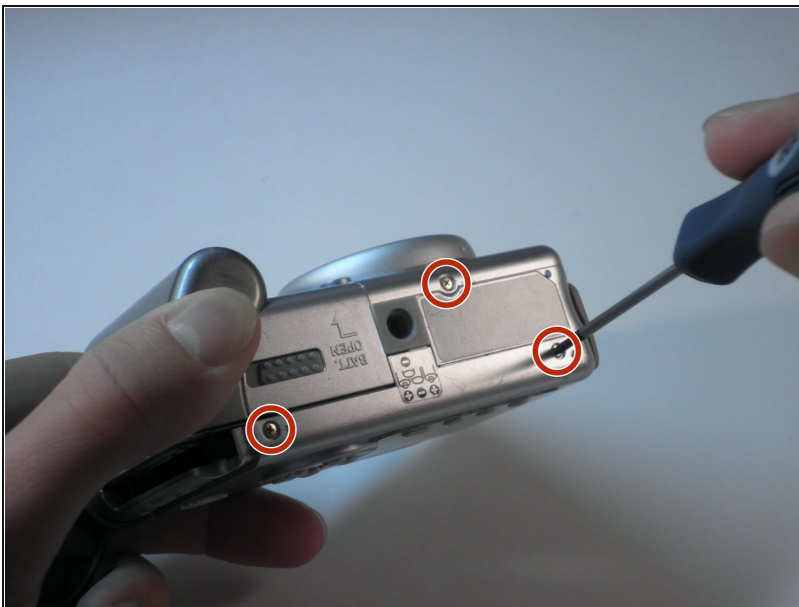
- Open the battery compartment and remove the batteries.
- Remove the two screws that are deep in the battery compartment with a Phillips #00 screwdriver.

## Step 2



- Open the CF compartment and remove the top screw with a Phillips #00 screwdriver.
- The panel that holds the shutter button and zoom will come off.
  - ⚠ Be careful! There are two small wires connecting the speaker to the body of the camera. These are very delicate so proceed with caution. Do not remove.

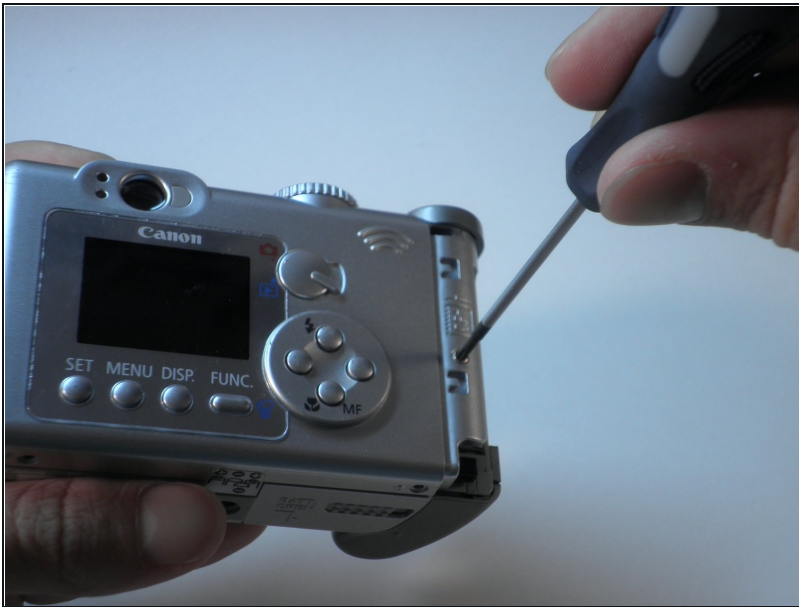
## Step 3 — Rear Exterior Panel



- Unscrew the three small screws on the bottom of the camera with a Phillips #00 screwdriver.
- Remove the wrist strap.

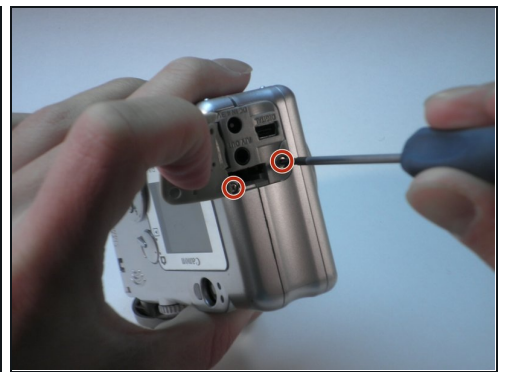


## Step 4



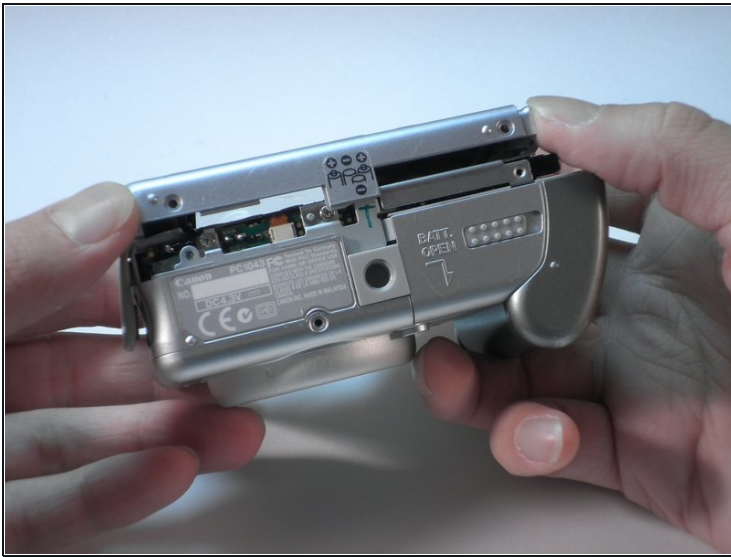
- Remove the screw in the CF compartment with a Phillips #00 screwdriver.

## Step 5



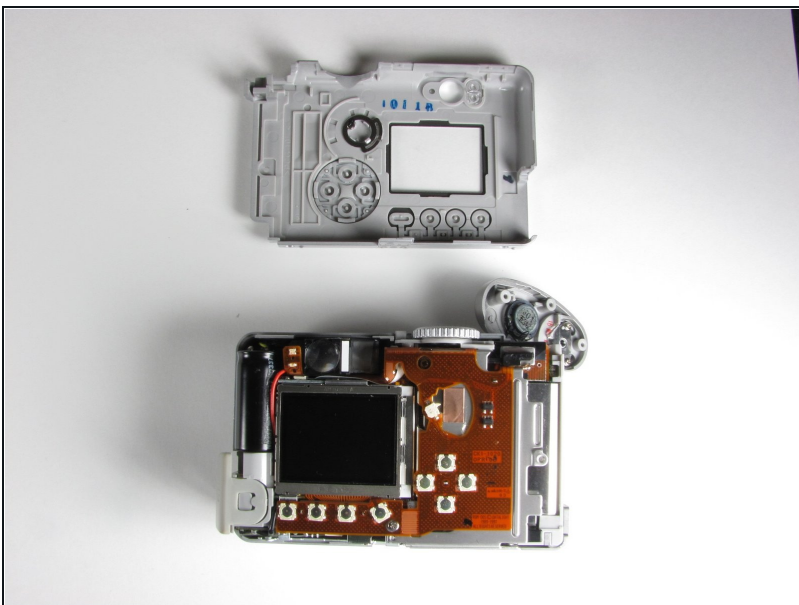
- Open the rubber Digital AV Out compartment flap.
- Pry the battery with an opening tool.
- Carefully pull out the battery with two fingers.
- Remove the two screws that are now visible with a Phillips #00 screwdriver.

## Step 6



- Starting from the bottom, carefully pull the casing off.
- The casing will now pivot at the top.
  - There are three catches that hold the back casing to the body.
- ⓘ You may have to pull with some force. The rear panel will make a snapping noise when it separates from the body.

## Step 7



- The interior of the camera should look like this.

## Step 8 — Front Exterior Panel



- Remove the two screws at the top of the battery compartment with a Phillips #00 screwdriver.

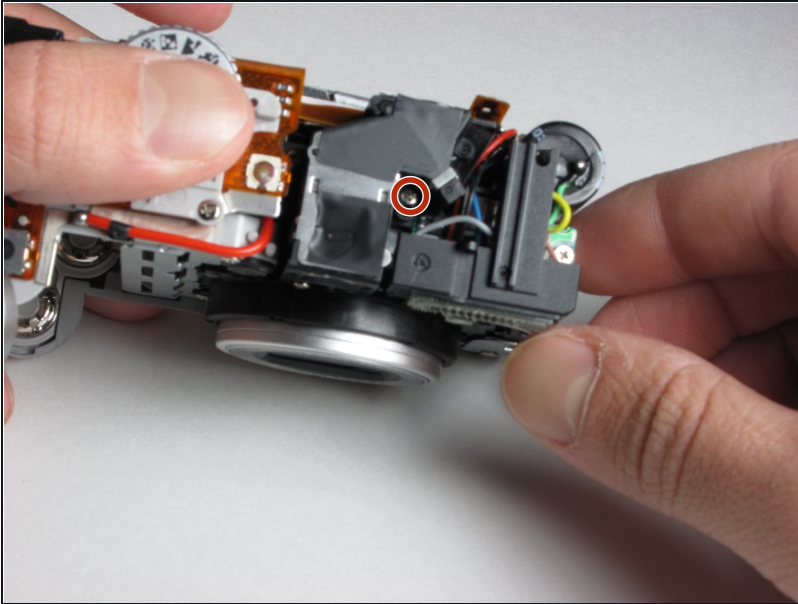
## Step 9



- With your right thumb, pull back on the tab while using your left hand to pull the face of the camera away from the body.

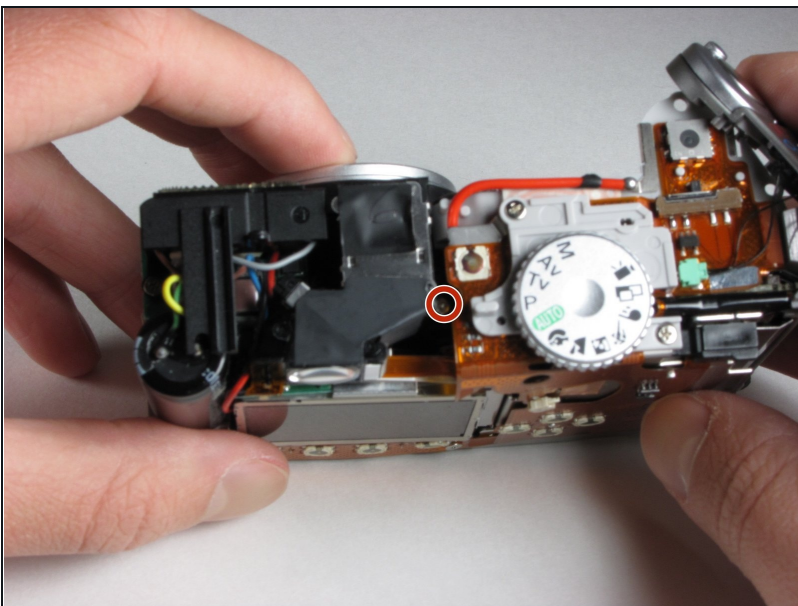


## Step 10 — Viewfinder



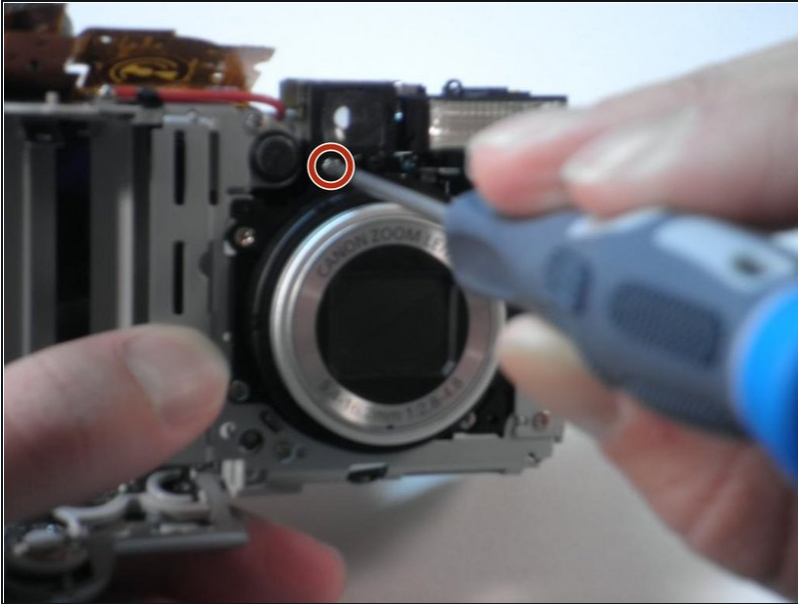
- After removing the front and rear panels, locate the viewfinder directly above the lens on top of the camera.
- Three screws hold the viewfinder in place: two on the top and one on the lens side of the camera.
- First, remove the screw in the bent corner of the viewfinder with a Phillips #00 screwdriver.

## Step 11



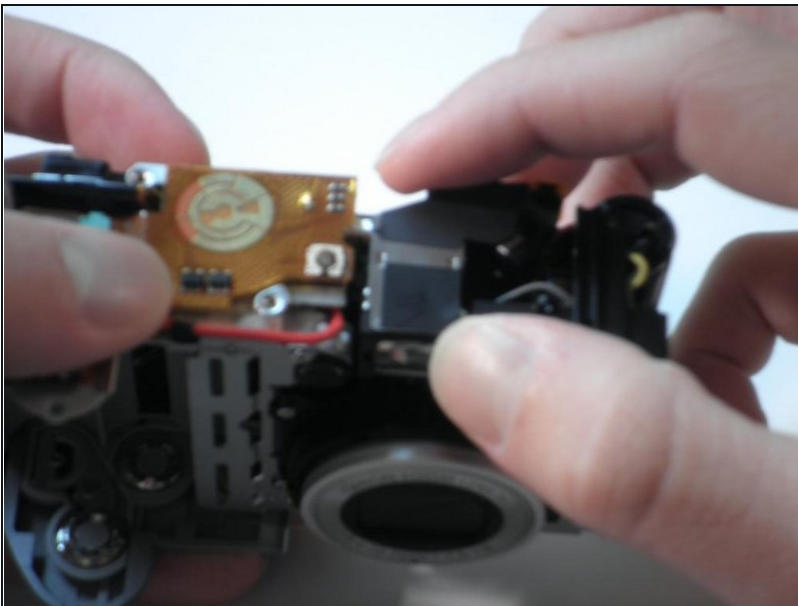
- Remove the second screw directly across from the bent corner.
- ⓘ It may be hidden in the space under the orange circuitry with a Phillips #00 screwdriver.

## Step 12



- Remove the final screw directly under the left side of the viewfinder (on the lens side) with a Phillips #00 screwdriver.

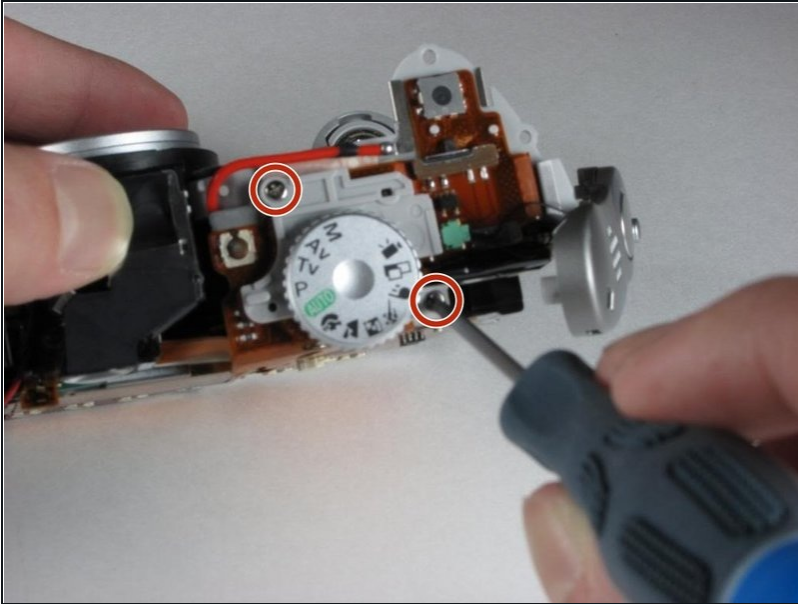
## Step 13



- After removing the three screws, the only thing still holding the viewfinder in place is a small plastic peg.
- Remove the viewfinder with a firm pull directly upwards.

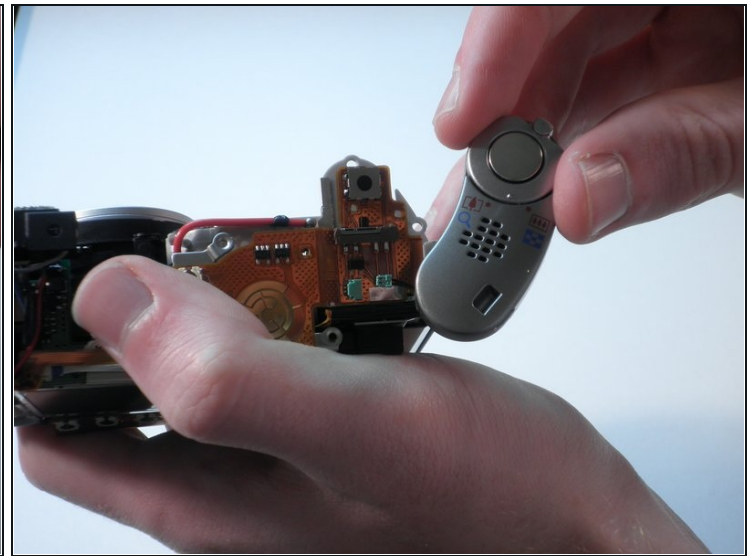
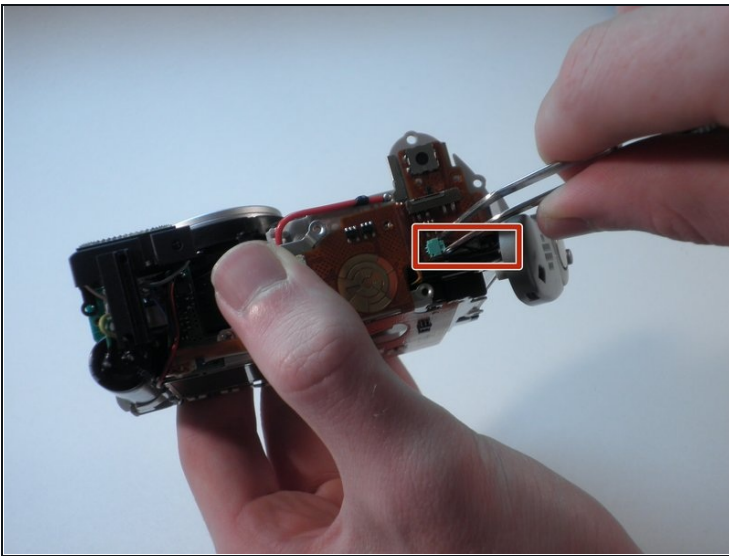


## Step 14 — Speakers



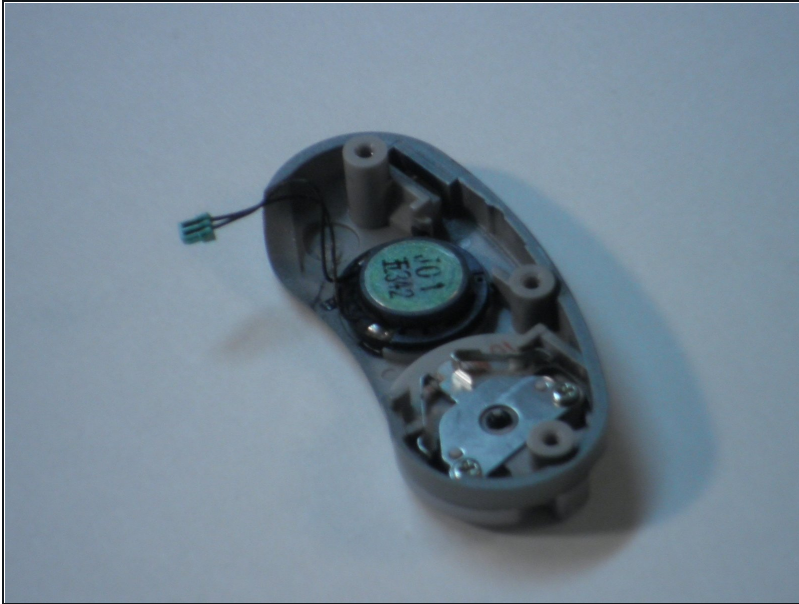
- Remove the two clearly visible screws from the control dial with a Phillips #00 screwdriver.
- Remove the dial—it should come off easily.

## Step 15



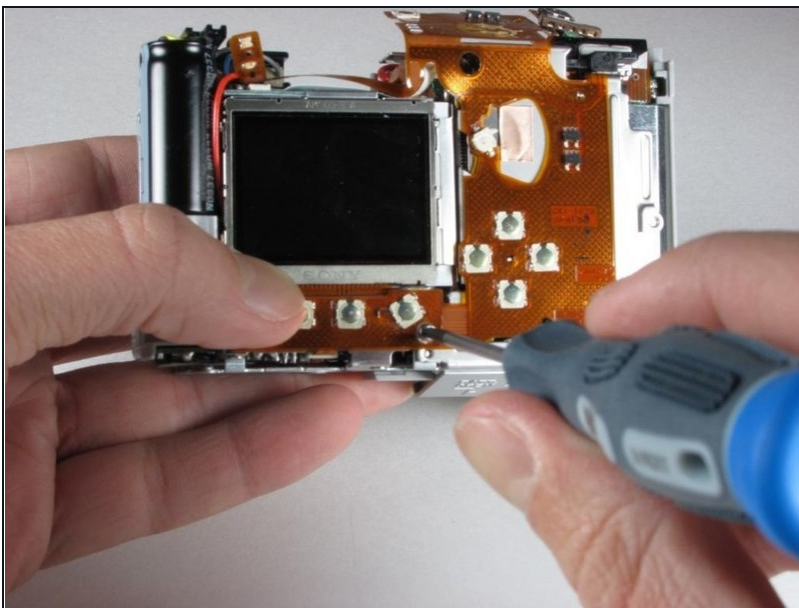
- With tweezers, carefully unplug the two small wires from the green plug.
- Carefully replace the broken speaker/shutter panel with a new one.

## Step 16



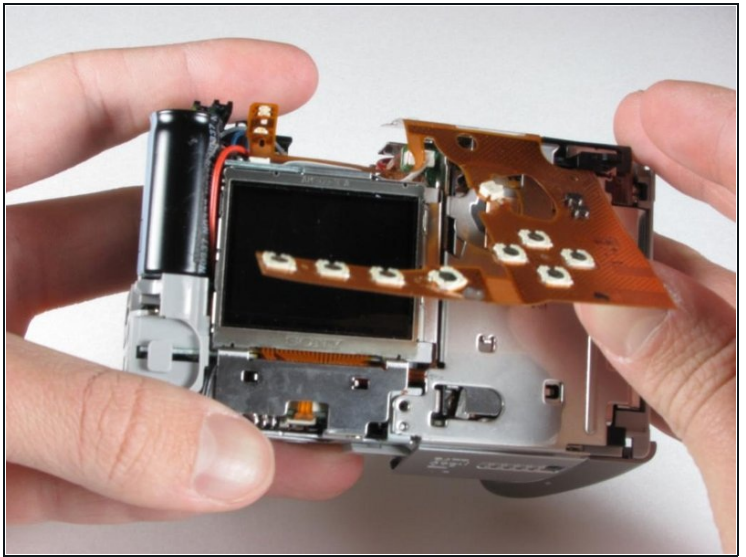
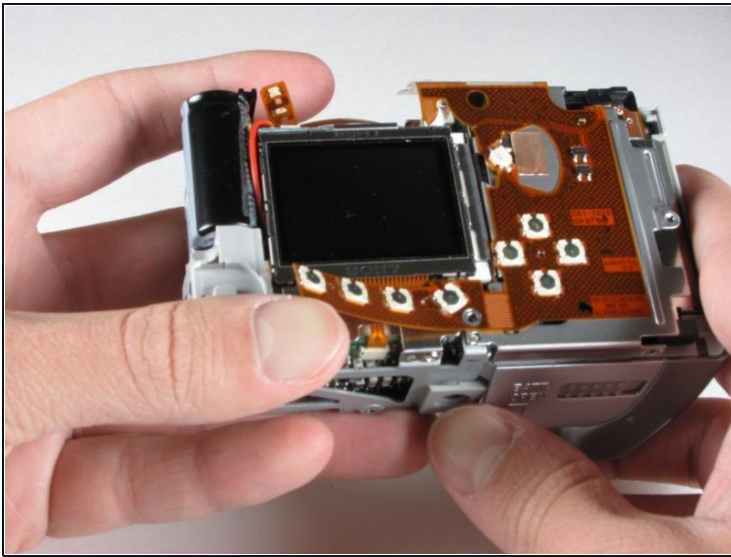
- The removed panel should look like this.

## Step 17 — Button Flex Assembly



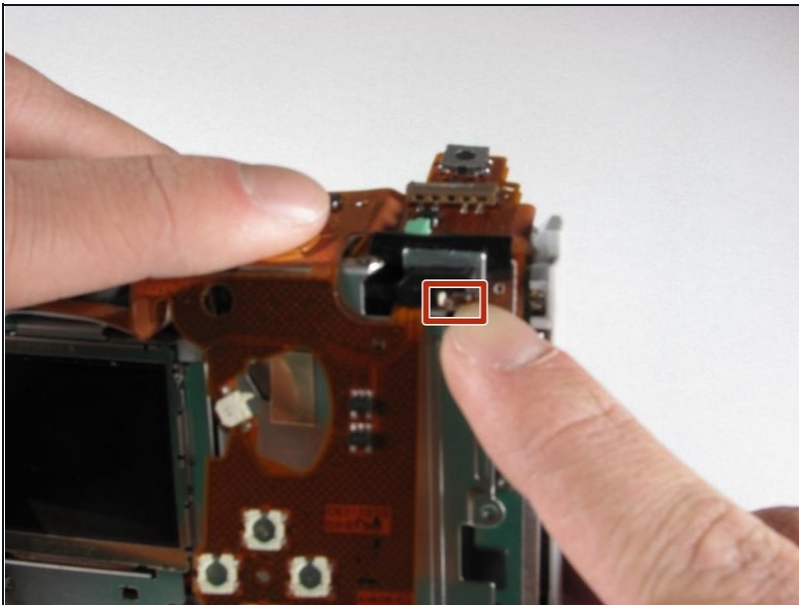
- Using a Phillips #00 screwdriver, remove the one visible screw that attaches the flex assembly to the back of the camera.

## Step 18



- Starting with the bottom-left corner (below the screen), lift the flex assembly away from the camera chassis.

## Step 19

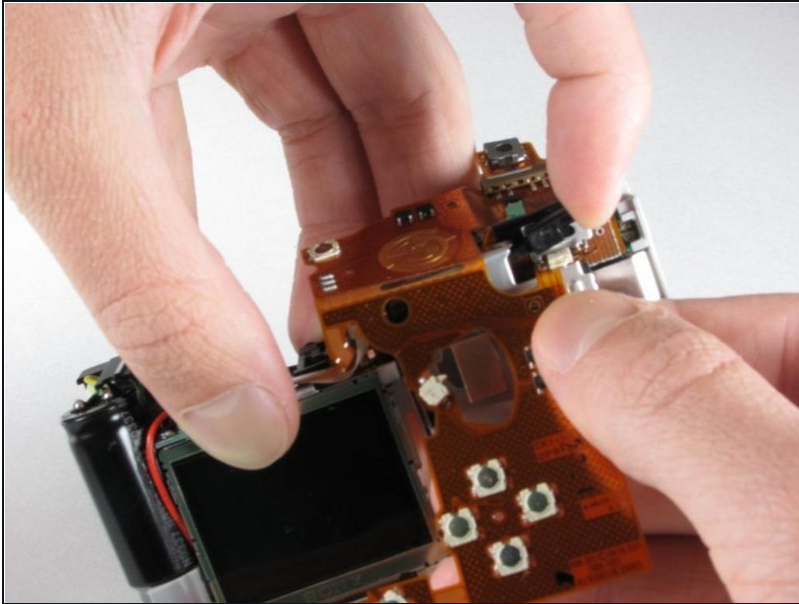


- Use your finger to release the small metal tab that attaches the flex assembly to the upper-right corner of the camera.

ⓘ The tab is very small and may be hard to see.



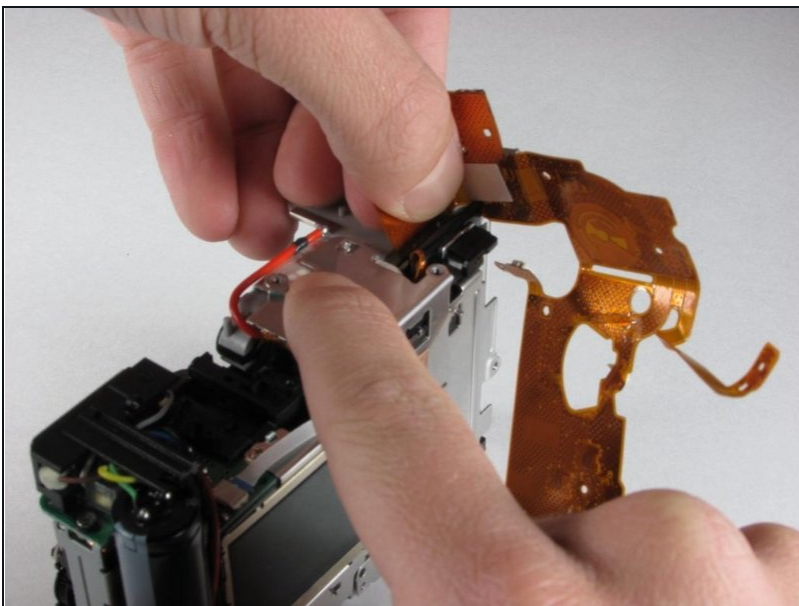
## Step 20



- Disconnect the black connector by lifting it up.

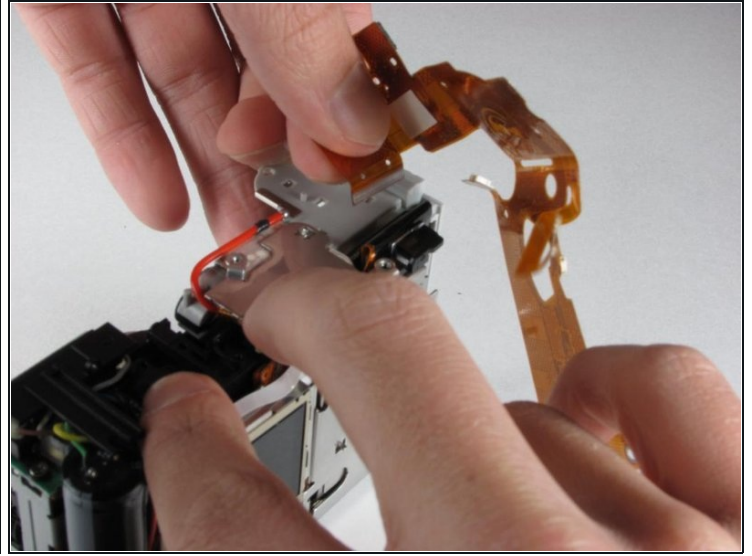
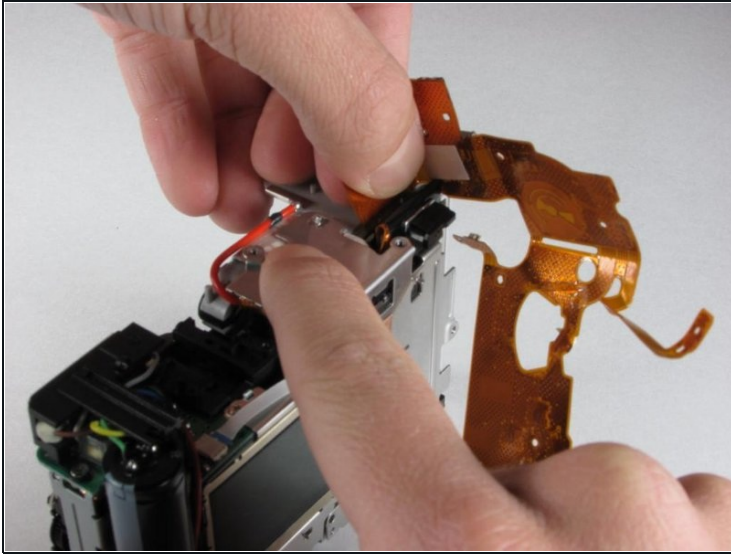
⚠ Potential for device damage: You may damage the flex assembly if you forcibly remove it without disconnecting the connector.

## Step 21



- Gently pull the rest of the flex assembly away from the camera body until you reach the last connector.

## Step 22



- Hold the flex assembly gently but firmly, and pull it out of the connection with two fingers.
  - ⓘ Be sure to pull straight up, not at an angle.

---

To reassemble your device, follow these instructions in reverse order.