



# Game Boy Advance LCD Screen Replacement

Written By: Aldo Corona



---

# INTRODUCTION

Use this guide to remove the LCD screen from the Game Boy Advance.

---



## TOOLS:

- [Phillips #1 Screwdriver](#) (1)
  - [Spudger](#) (1)
  - [Tri-point Y0 Screwdriver](#) (1)
-

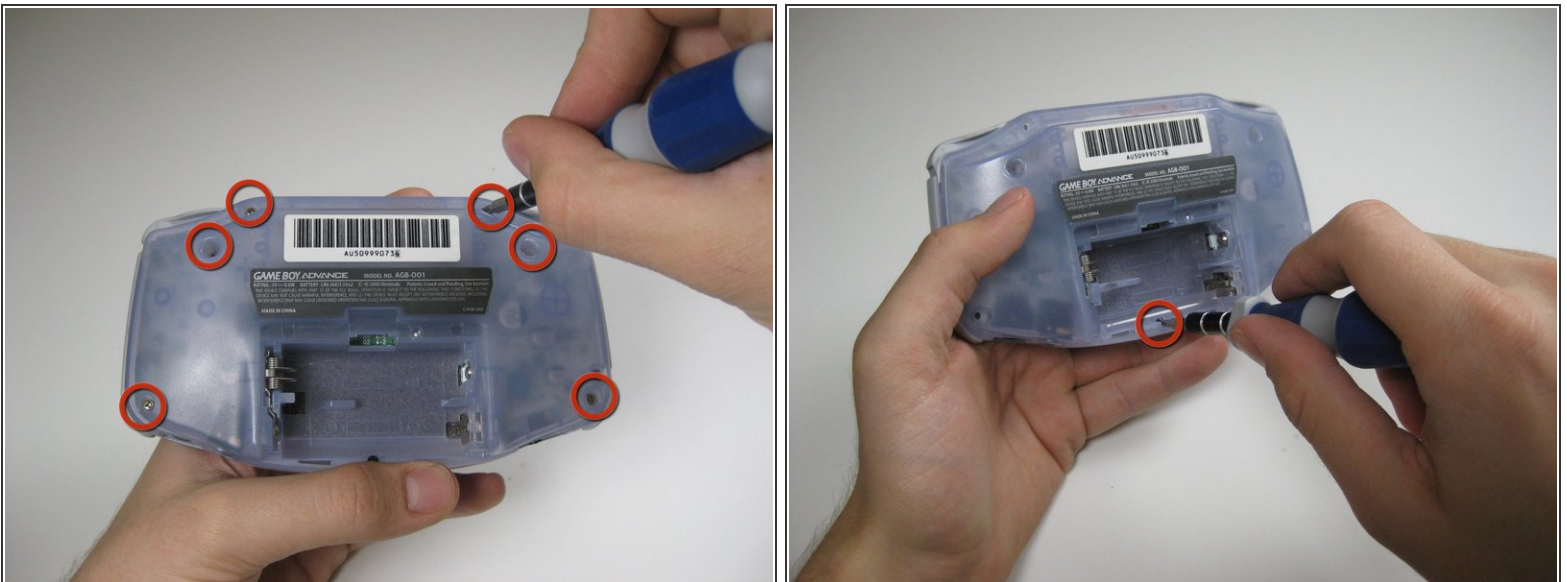
## Step 1 — Remove the Battery Cover/Batteries



- Take the battery cover off by releasing the locking tab and hinging the cover away. Remove the batteries inside the cover

**⚠ Do not forget to remove the batteries! This applies to working with any electronic device as working with live electricity may damage the device or cause malfunctions**

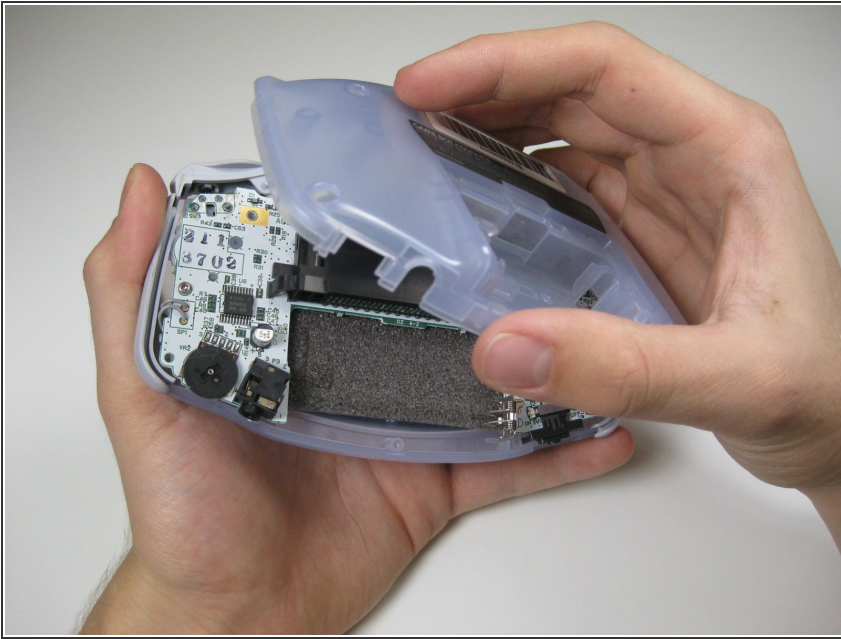
## Step 2 — Unscrew the Back Panel



- Remove the six back panel screws using a Tri-wing Screwdriver.
- Remove bottom back panel screw with a Phillips #1 screw driver. (Image #2)



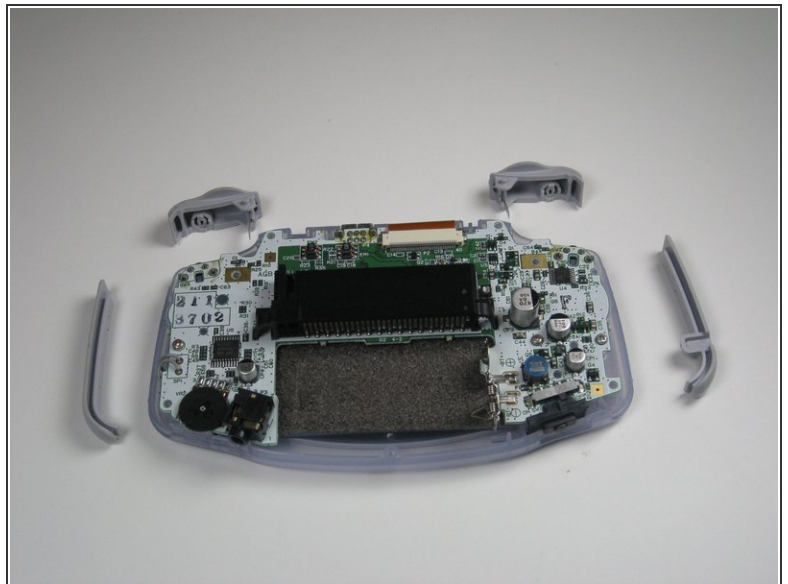
### Step 3 — Remove the Back Panel



- Remove the back panel by pulling away with one hand and the front secured in the other hand.

**⚠ Removal of the back panel may cause shoulder buttons and side panels to come loose and fall off.**

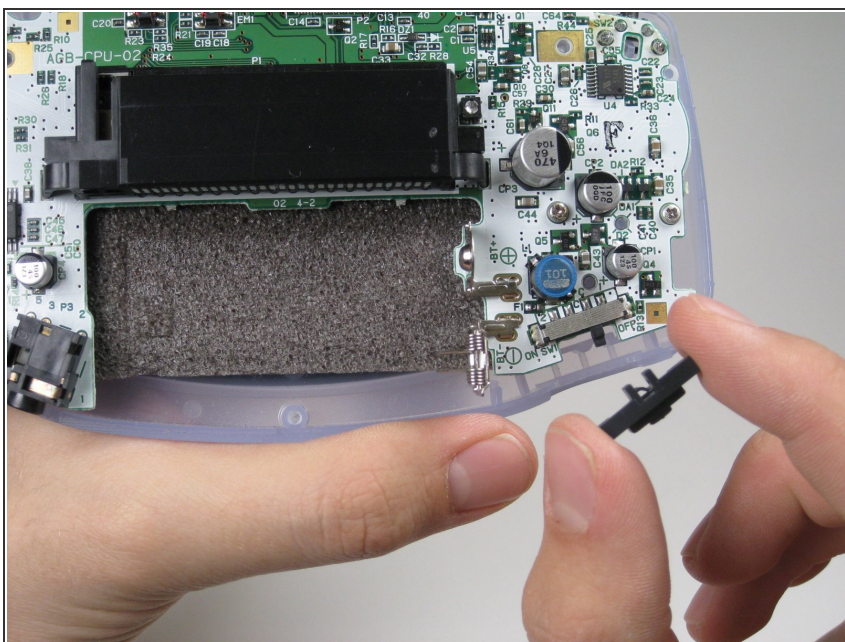
### Step 4 — Remove Triggers



- Remove left and right triggers by lifting and pulling them away from the system.
- Do the same for side panels

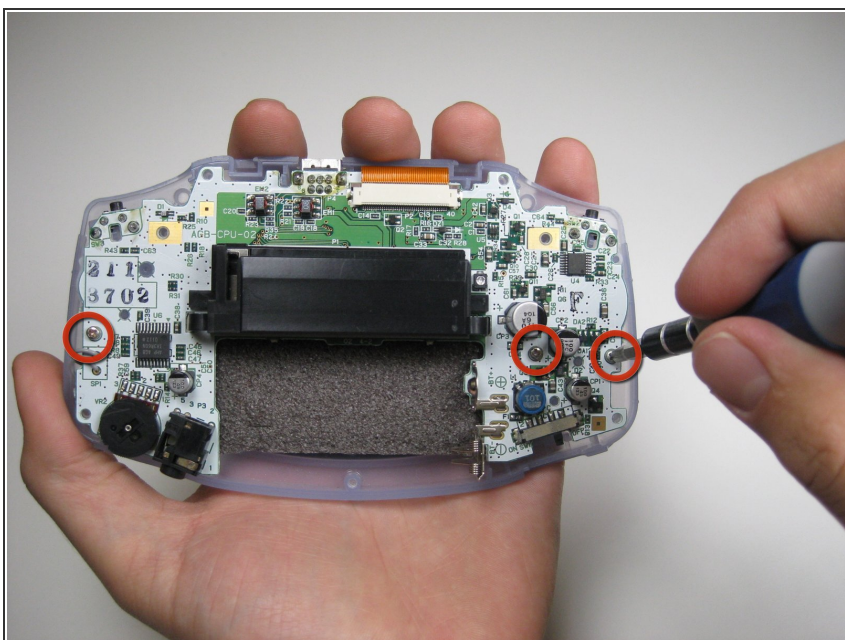
**i For finicky or jammed triggers only!** Adjust and correct triggers and reassemble. Most jammed triggers are caused by buttons misplaced or jammed in its enclosure.

## Step 5 — Remove the On/Off Switch



- Remove the gray **On/Off** Switch by pulling up and away from the unit. Replace with another switch if necessary.

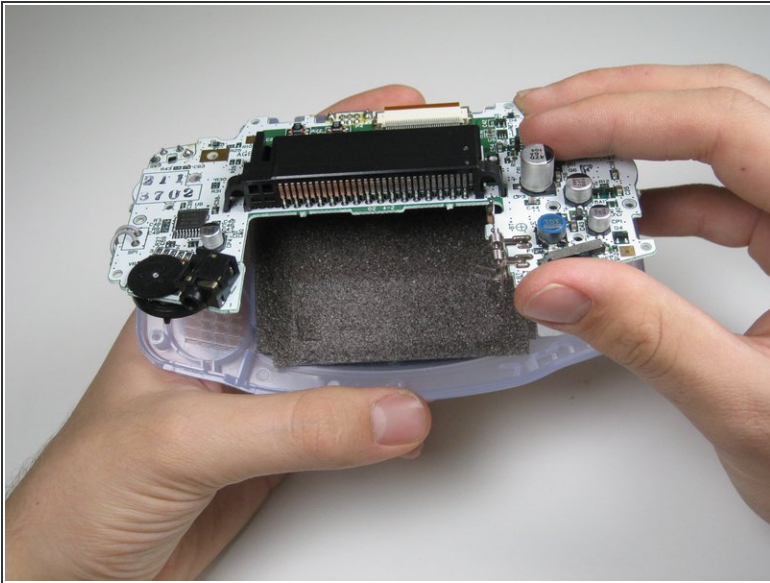
## Step 6 — Buttons and LCD Screen



- Remove the three screws on the circuit board with a Phillips #1 screw driver.



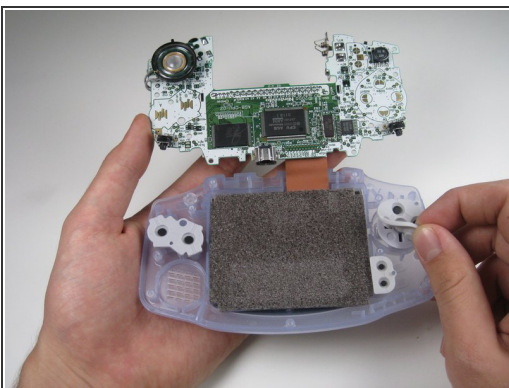
## Step 7



- Pull circuit board away from the front panel by pulling up at the bottom of the circuit board, keeping the top ribbon still connected.

**⚠ Handle with care!** The ribbon connecting the circuit board to the LCD screen can easily be damaged and will require replacement if broken.

## Step 8 — Buttons



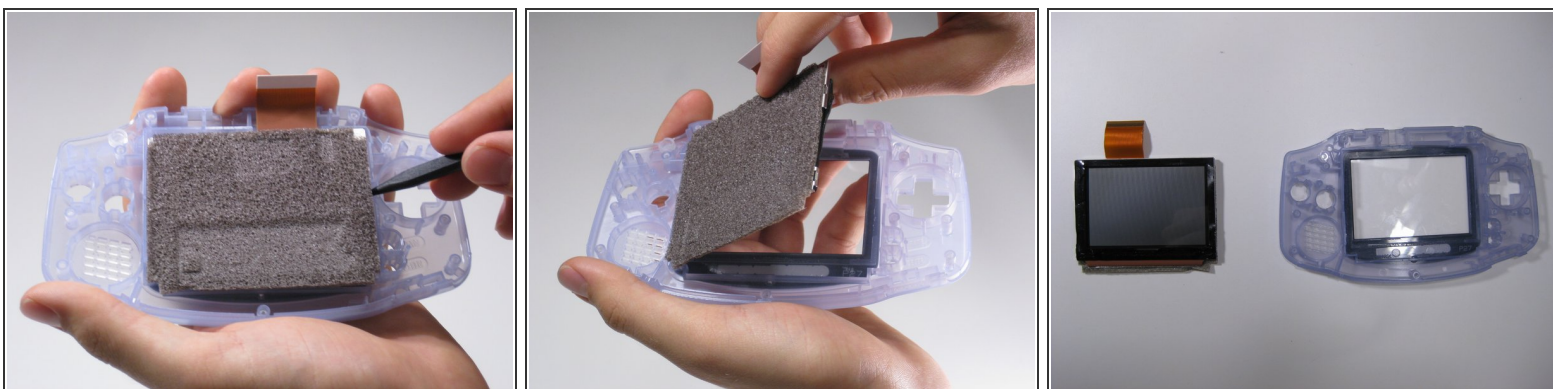
- Remove the rubber button pads from their pockets.
- Remove the plastic buttons and the D-pad from beneath the rubber pads with tweezers or by hand.

## Step 9 — LCD Screen



- Use a spudger/tweezers/fingernail to unlatch the LCD ribbon port by pulling the grey tabs on the sides upwards (towards the top edge of the PCB).
- Once the LCD ribbon port has been unlatched, the LCD ribbon should very easily slide out and can be removed with zero force using fingers or tweezers.

## Step 10



- Use the spudger to lift the screen from the front panel. Place the spudger in the space directly left of the D-pad.

**⚠ The screen and the front panel is connected by a black tape that could rip if not removed carefully.**

To reassemble your device, follow these instructions in reverse order.