



Les Paul Wireless Guitar Body Teardown

This guide will demonstrate how to open the body of the guitar.

Written By: Chris



INTRODUCTION

The body of the guitar holds most of the main components and motherboards.



TOOLS:

- [TR10 Torx Security Screwdriver](#) (1)
-

Step 1 — Les Paul Wireless Guitar Body Teardown



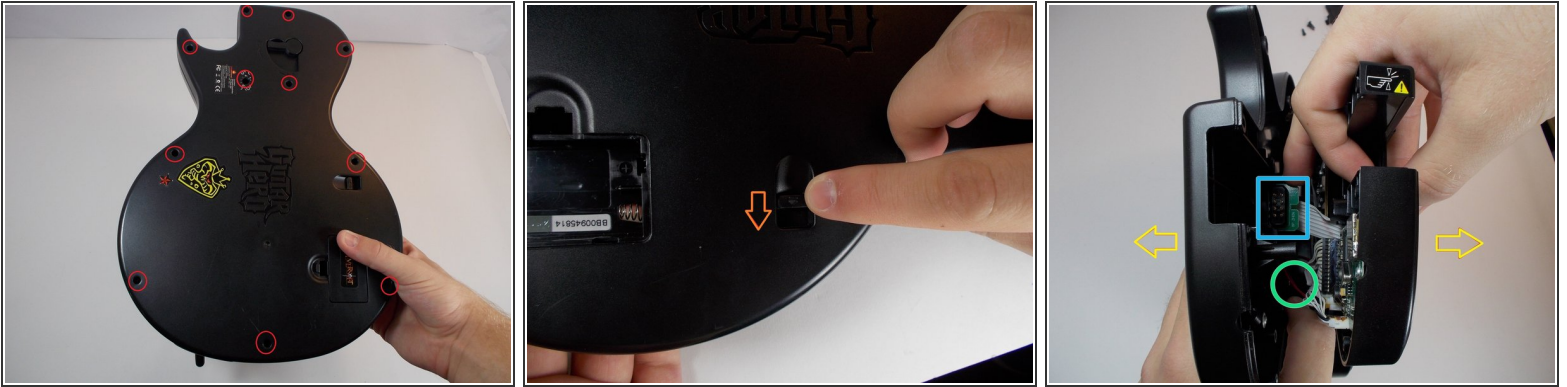
⚠ Remove batteries

Step 2



- Remove void warranty sticker
- The sticker is covering a torx screw

Step 3



- Unscrew the 11 screws securing the back of the body using a T10 Torx screwdriver. Each screw is 1 cm long.
- Push level, this will detach the back of the guitar from the front.
- Carefully remove the back of the body
 - The battery pack cord is attached to both sides of the guitar, be careful not to tear it apart.
 - The neck connector may be stuck to the back so be sure to detach it before fully pulling

To reassemble your device, follow these instructions in reverse order.