



# HP Mini 110-1046NR 3G Card Replacement

If the mobile network card is malfunctioning,...

Written By: Amos Hine



# INTRODUCTION

If the mobile network card is malfunctioning, or you want to install a different card in the Mini PCI Express (Mini PCI-E) slot that the mobile network card occupies, this guide will tell you what to do.

## TOOLS:

Phillips #00 Screwdriver (1)

Phillips #0 Screwdriver (1)

Phillips #1 Screwdriver (1)

Spudger (1)

iFixit Opening Tool (1)

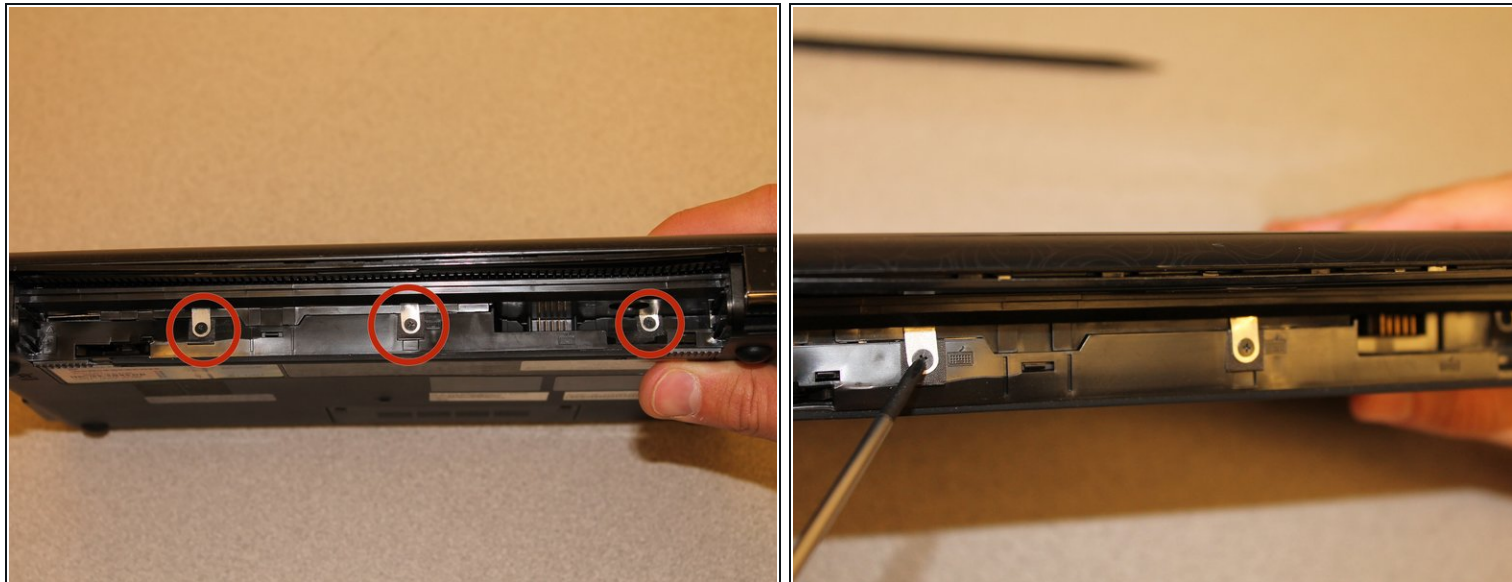
## Step 1 — Battery



- Power-off the netbook fully before attempting to remove the battery.
- Flip your netbook upside down, and locate the sliding tabs near the battery.
- Slide both tabs inward so that the battery visibly moves away from the case of the computer.
- Release the tabs and pull the battery out.

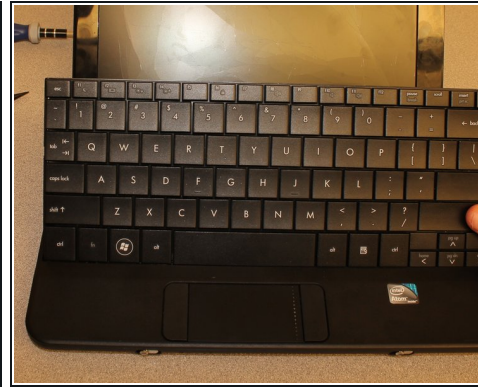
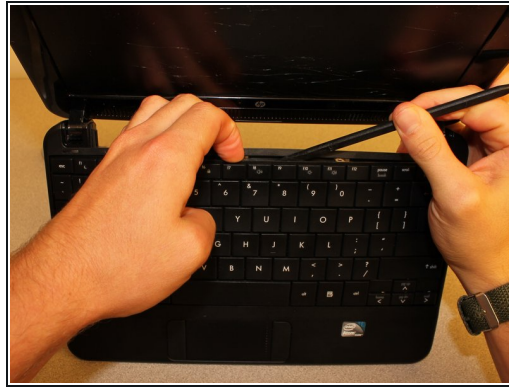
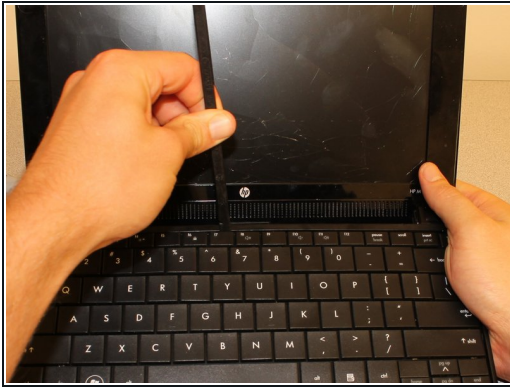


## Step 2 — Keyboard



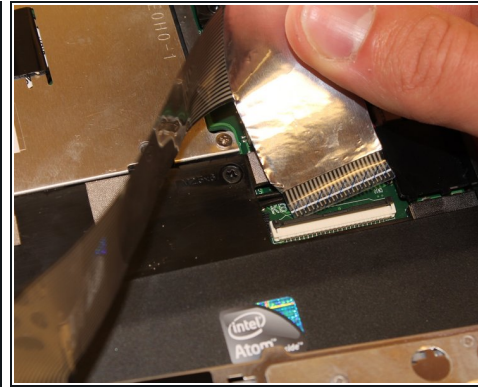
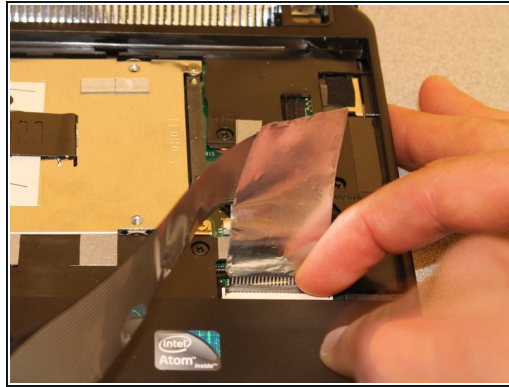
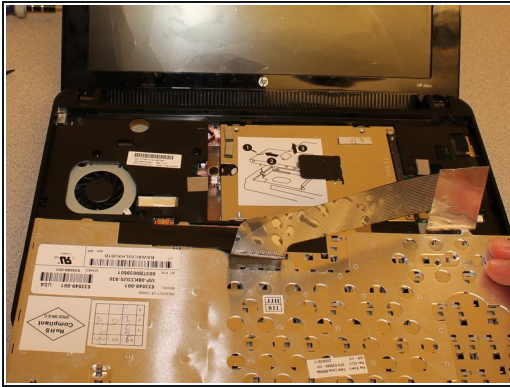
- With the screen closed, turn your netbook around so that the battery slot is facing you.
- Remove the three 2.9mm screws in the battery slot.
  - This step can be made easier by using a magnetic screwdriver.

## Step 3



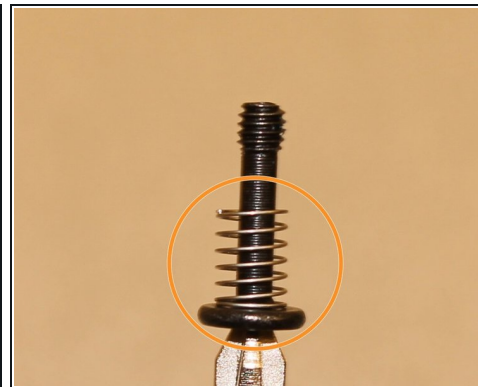
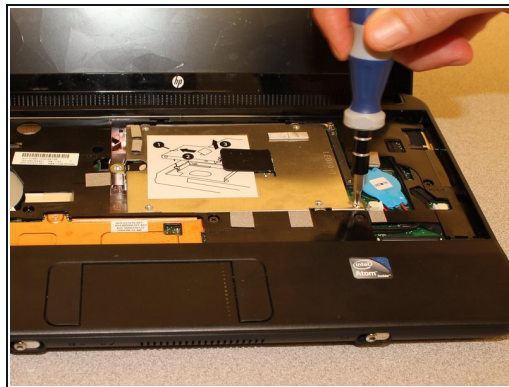
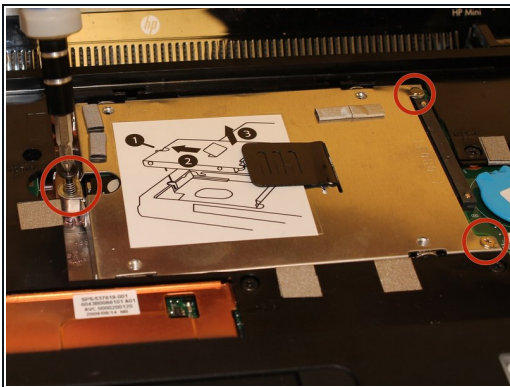
- Flip the netbook upright, and open the screen as far as it will go.
  - Pry up the keyboard from the middle of the top edge.
    - Insert the flat end of the spudger between middle of the the top edge of the keyboard and the plastic frame behind it.
    - Pry the keyboard up until it pops out or until you can grab it with your fingers, and then pull gently until it pops out on both sides.
- ⚠ Do not pull the keyboard out immediately - there is a potentially fragile ribbon cable that attaches to the motherboard behind the keyboard.

## Step 4



- Flip the keyboard over (toward you) by pivoting it about the lower edge, and lay it upside down on top of the touchpad area to reveal the ribbon cable.
- Lightly pull up on the black tab on top of the keyboard ribbon cable until it hinges toward you and releases the ribbon cable end.
- Pull the ribbon cable backward and out of the receptacle. This should not require any effort.

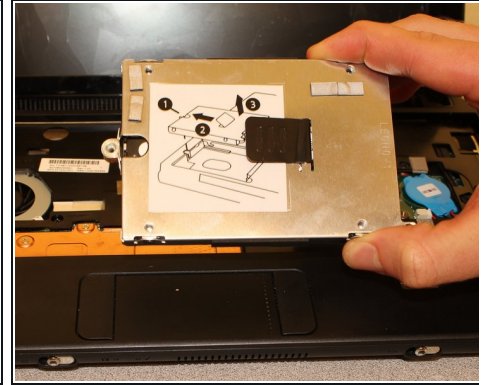
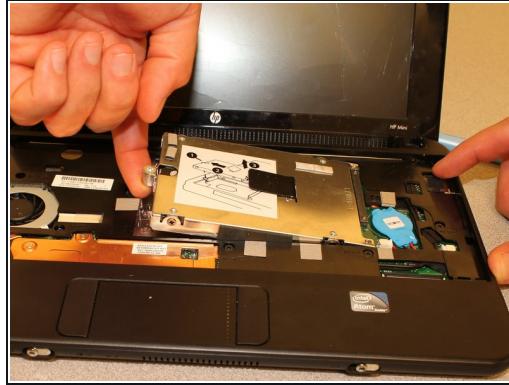
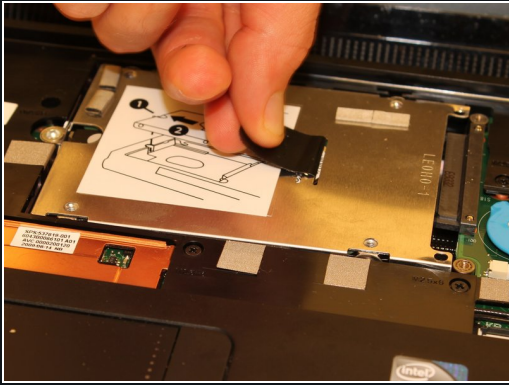
## Step 5 — Hard Drive



- Remove the three screws holding down the hard drive. Use a Phillips PH0 screwdriver for the two silver, 3.4mm screws on the right, and use a PH1 for the black, 10.3mm screw on the left.
- It is not necessary to fully remove the 10.3mm screw, but if you do, be careful to not lose the spring.

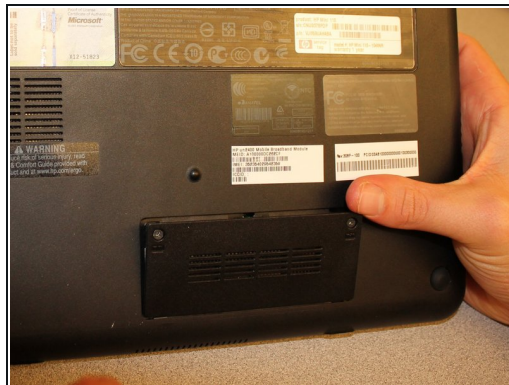
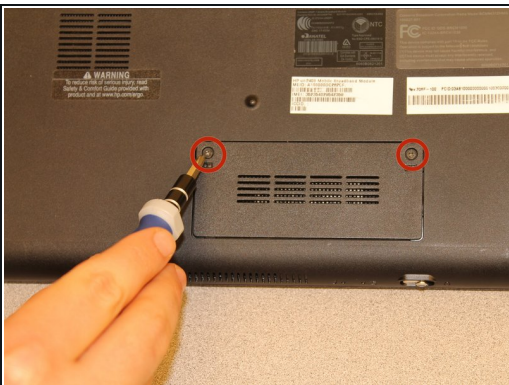


## Step 6



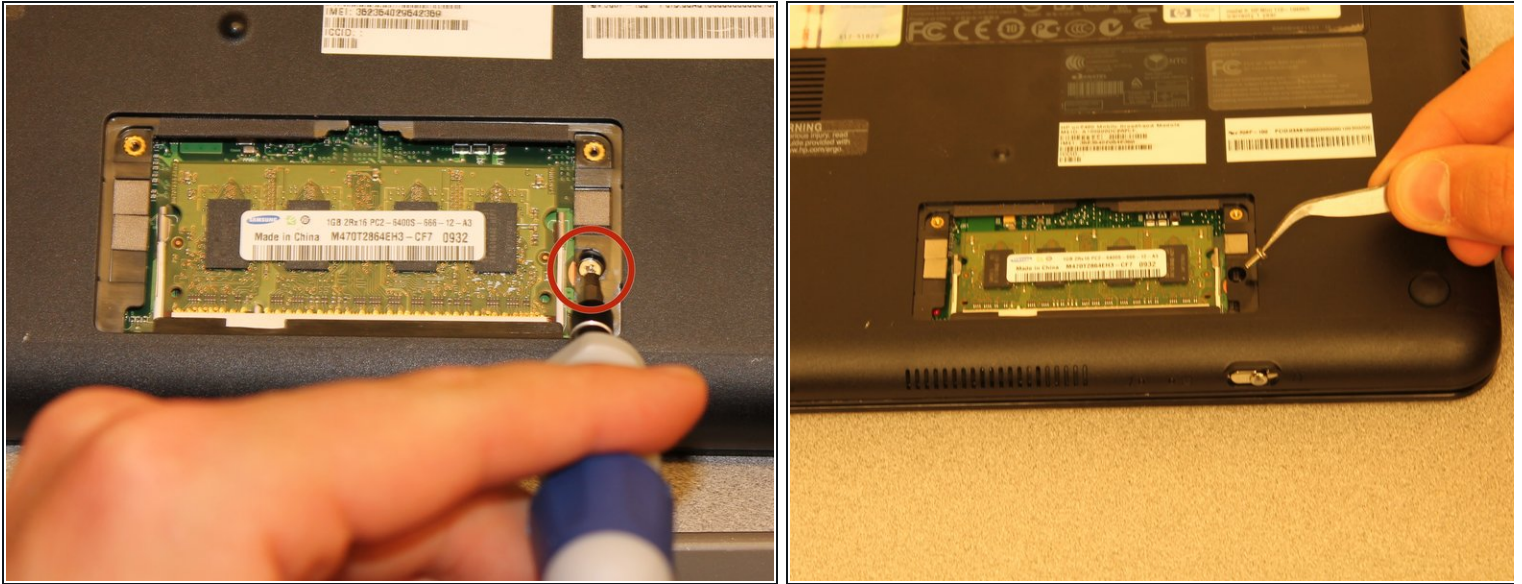
- As shown on the top face of the hard drive itself, pull hard drive left using the black tab until the hard drive is unplugged and entirely released from its receptacle.
- Lift the hard drive out of the laptop.
- Place the hard drive in an anti-static bag to reduce the likelihood of damaging it with static electricity.

## Step 7 — Memory Card Cover



- Flip the netbook over so you are looking at the bottom, and locate the two screws that hold the memory card cover.
- Next, take a Phillips PH1 screwdriver and unscrew the two screws.
  - ❗ These screws will not release from the cover once they are unscrewed.
- If necessary, use the flat end of the spudger to assist in prying the cover away from the computer.

## Step 8 — Keyboard Bezel



**i** It is not necessary to remove the memory card for this step.

- Remove the 4.9mm screw located to the right of the of the memory card using a PH1 screwdriver.

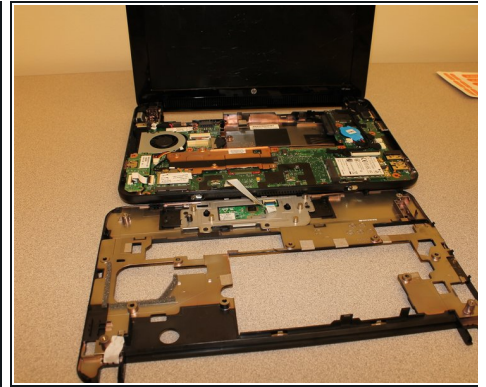
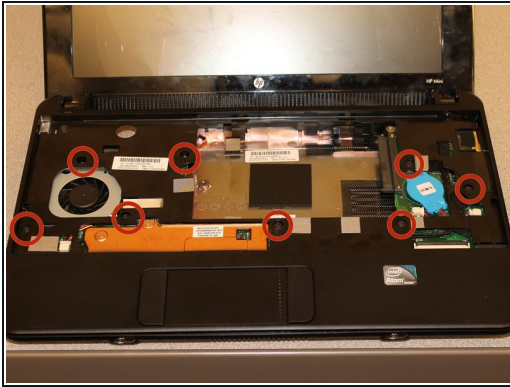
## Step 9



- Pry the four feet with the pick-end of the spudger. These are glued down, so this may require some force.
- Remove the 6mm PH1 screws located under each foot.



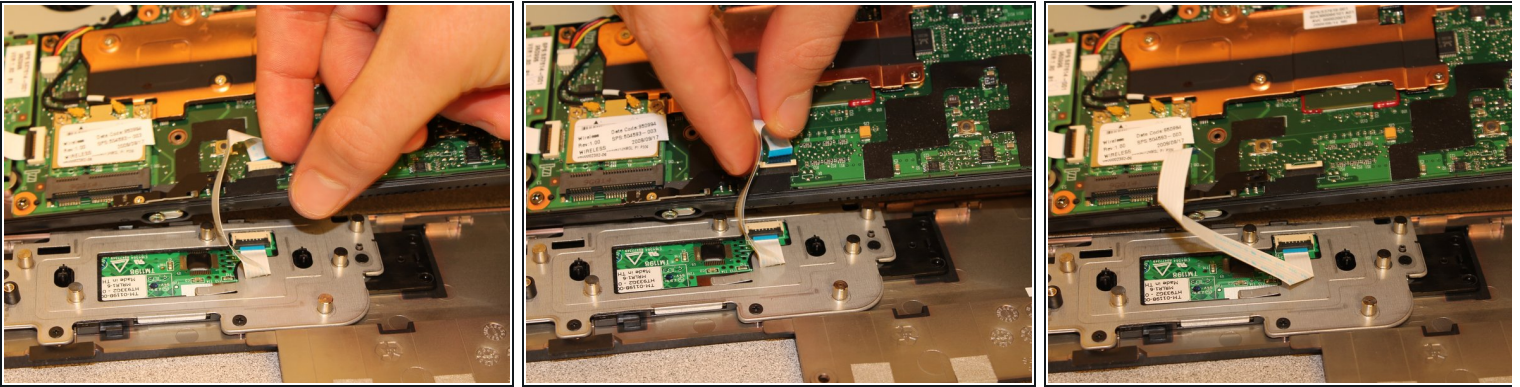
## Step 10



- Flip the netbook over and remove with a PH1 screwdriver the eight 5.9mm screws that secure the keyboard bezel in place.
- ❗ Only remove the black screws with "M2.5x6" markings next to them. All others are unnecessary.
- ⚠ Taking the keyboard bezel off without removing the hard drive may be possible, but there is a risk of breaking several tabs on the keyboard bezel located between the hard drive and the frame of the computer.
- Using the flat end of the spudger or pry stick, pry the keyboard bezel away from the base by wedging the tool between the base and keyboard bezel and run the tool along the side until the cover is fully released.
- ⚠ Don't pull the front of the keyboard up very far. There is a small, potentially fragile ribbon cable on the back of the touchpad that is still attached to the system board.
- Carefully flip the keyboard bezel over (toward you) to reveal the touchpad ribbon cable.

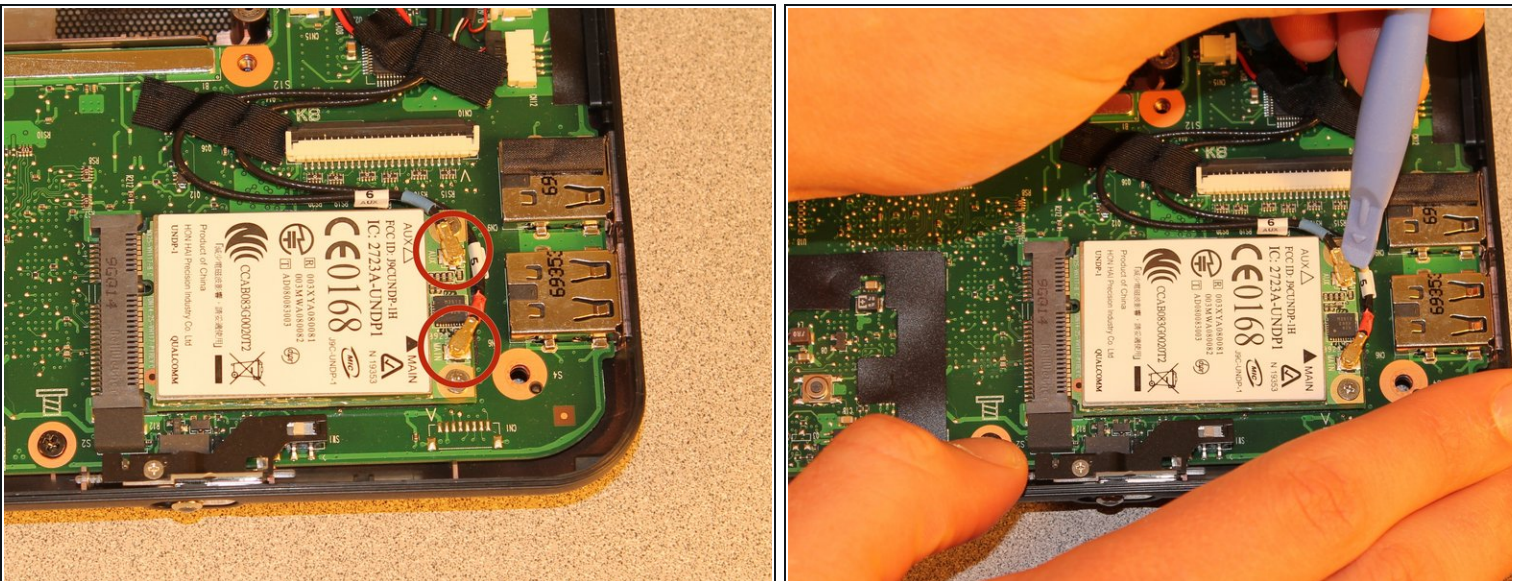


## Step 11



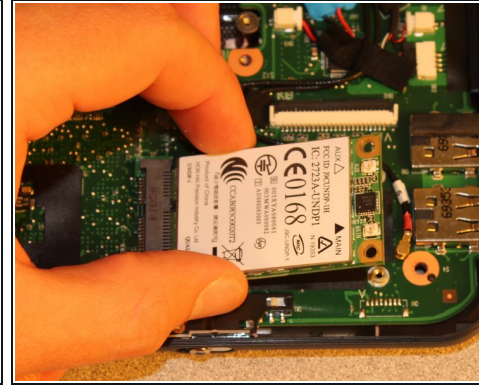
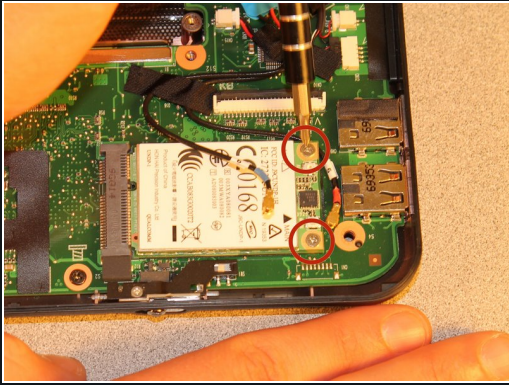
- Locate the black and white tab that connects the touchpad ribbon cable to the motherboard.
- Using your fingernail or a pry stick, flip the white tab up to release the ribbon cable end.
- Remove the touchpad ribbon cable from the receptacle on the system board by gently pulling the ribbon away from the clamp.

## Step 12 — 3G Card



- Using a pry stick, pop off the two cables from the right-hand end of the card.
- ⓘ Be sure to make a note of which cable attaches to which connector on the card. They should already be labelled "AUX" and "MAIN" to avoid any confusion.

## Step 13



- Remove the two 3.4mm screws that hold down the right edge of the card with a Phillips PH0 screwdriver.
- ① The card is spring loaded at the receptacle. Unless you hold it down, the card will spring up once both screws are removed.
- Allow the card to lift up, and then slide it out of the black receptacle.
- ★ When putting the card back in, make sure it is fully seated in the receptacle before pushing it down to re-insert the screws.

To reassemble your device, follow these instructions in reverse order.