



LG LX160 Keyboard Replacement

This guide will show you how to replace a worn...

Written By: Shane Smith



INTRODUCTION

This guide will show you how to replace a worn out, scratched, or damaged internal keyboard on the LG LX160 cell phone. To begin this guide, complete steps 1 to 10 of the tear down guide

TOOLS:

Phillips #0 Screwdriver (1)

Tweezers (1)

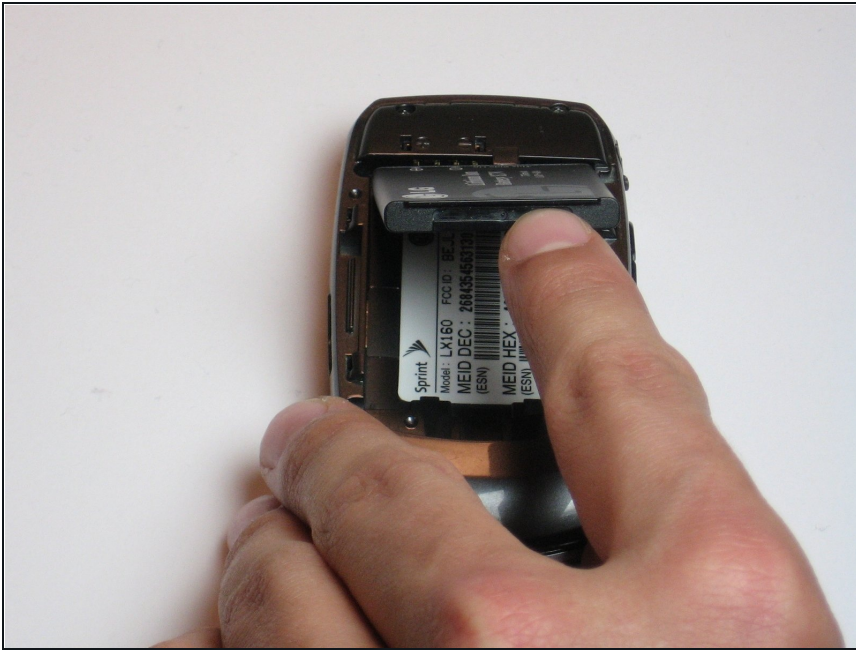
64 Bit Driver Kit (1)

Step 1 — Battery



- Place the phone on a flat surface with the back facing upward.
- Remove the back panel by placing your thumb on the LG logo and sliding the panel in a downward motion until the panel is removed.

Step 2



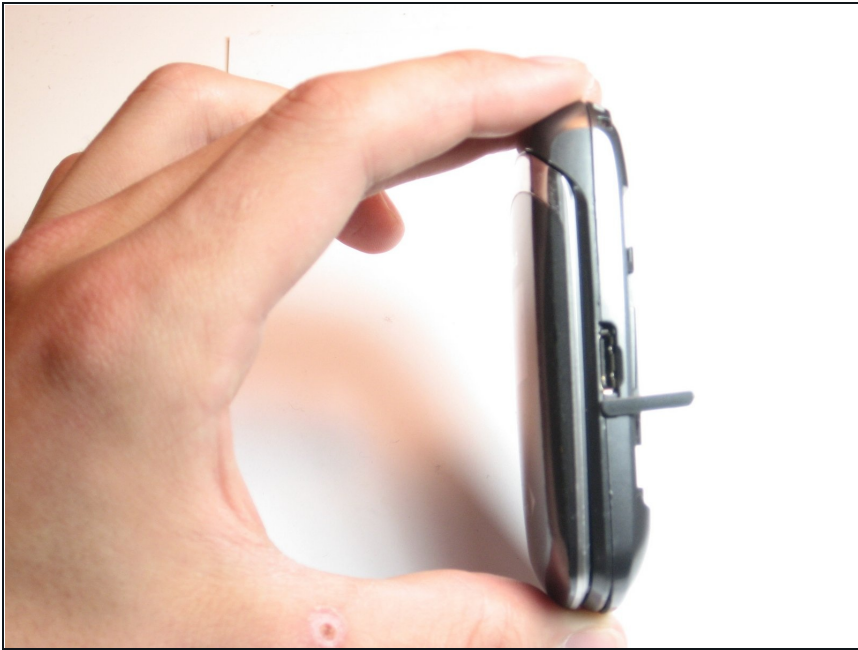
- Once the panel is removed, you will see the battery. Remove the battery by sliding your finger into the notch where the LG logo was on the panel and lift the battery.

Step 3



- Remove the battery completely from the phone and place the battery off to the side.

Step 4 — Motherboard



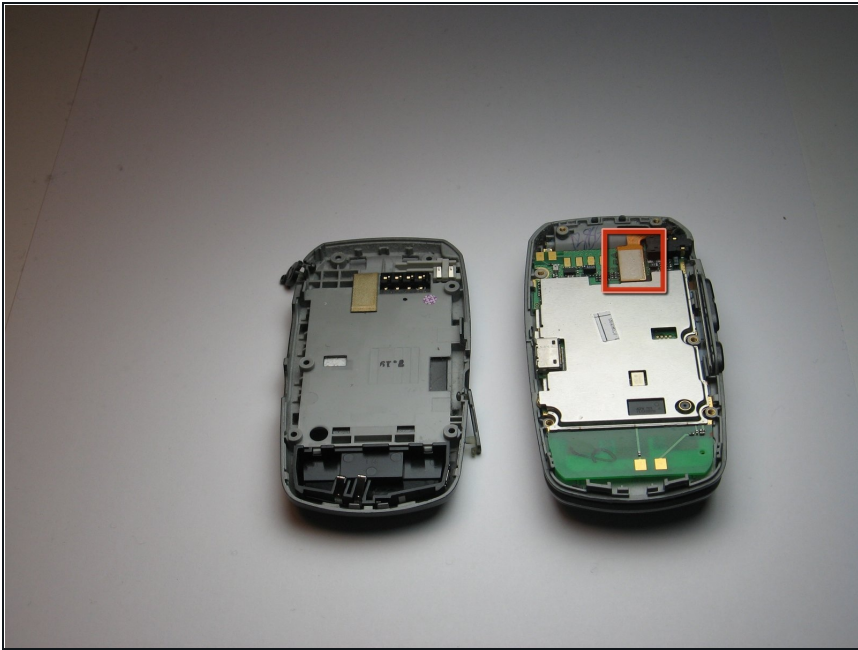
- Before continuing pull off all the rubber tabs to the headphones, and the power input.

Step 5



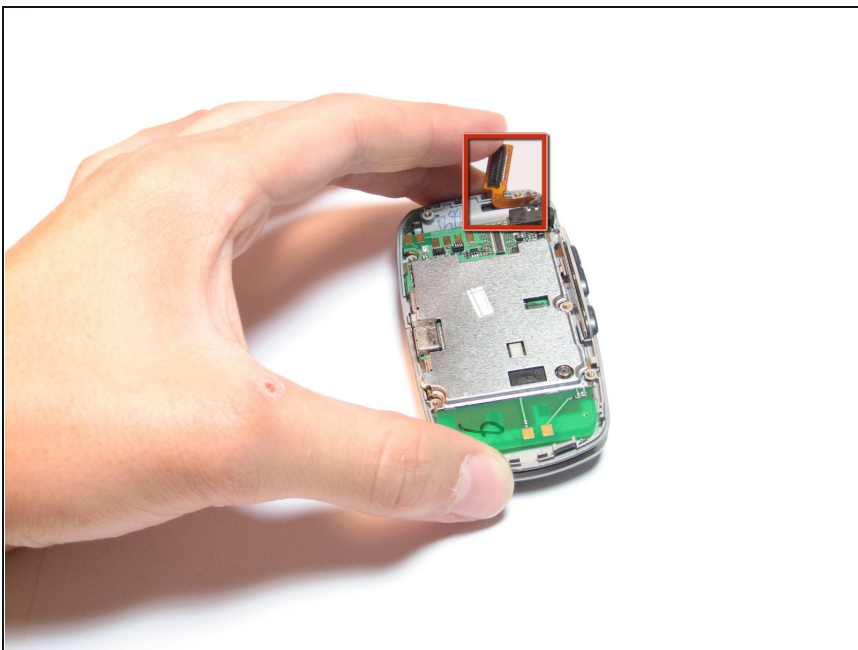
- Now turn the phone so that you can see the back where the battery was. Using a screw driver, unscrew the 6 screws holding the back casing together.

Step 6



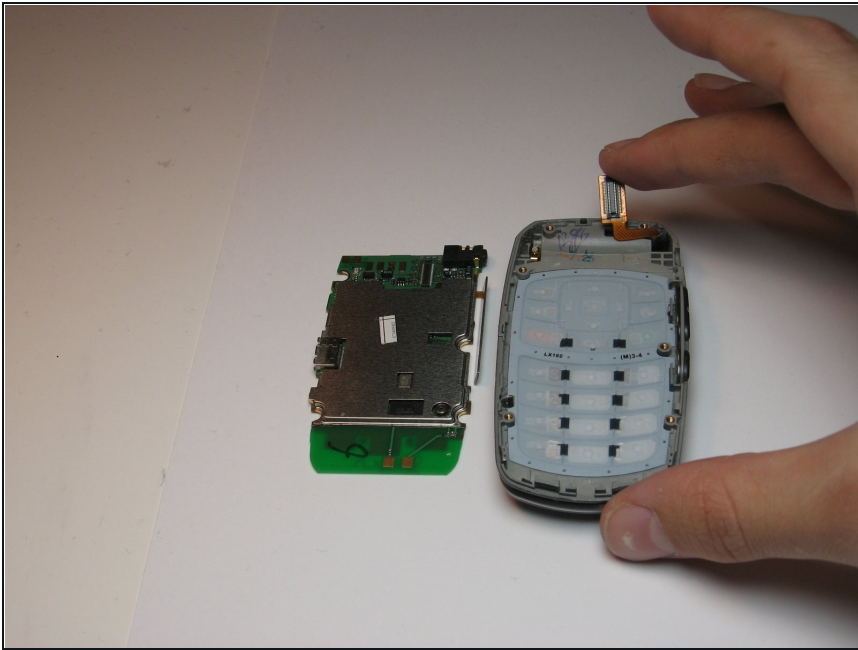
- At the top of the logic board there is a small rectangle with a white pad on it, use your [tweezers](#) and gently grip the neck of the orange wire.
- Gently pull up on the orange wire until it comes loose. It may take some force so do not be concerned with being overly gentle.

Step 7



- After pulling on the orange wire it should come loose like the image.
- Be sure that the black chip on the underside of the orange wire is all the way out like in the picture before continuing to the next step.

Step 8



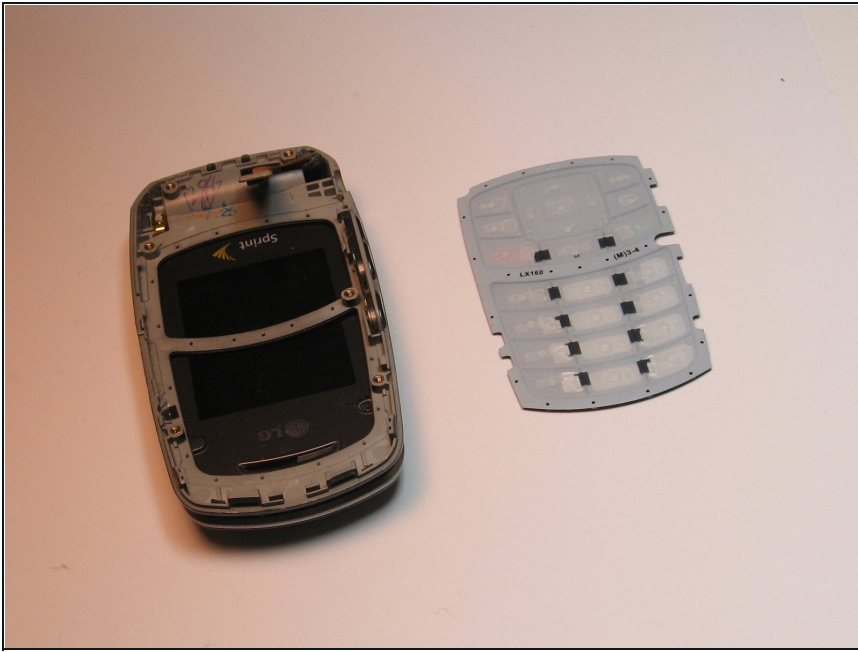
- Now you can remove the logic board from the casing, and set it aside.
- If you're replacing the logic board insert the board into the phone and attach the phone via the small orange tab

Step 9 — Keyboard



- Peel out the keypad in the back of the phone. It is the white flimsy plastic from the bottom.

Step 10



- The keyboard will be separated and may be replaced with a new keyboard.

To reassemble your device, follow these instructions in reverse order.