



iPhone 4 Speaker Enclosure Assembly Replacement

Prereq with logic board still in.

Written By: Walter Galan



INTRODUCTION

Prereq with logic board still in.




TOOLS:

- [Phillips #000 Screwdriver](#) (1)
 - [iFixit Opening Tools](#) (1)
-

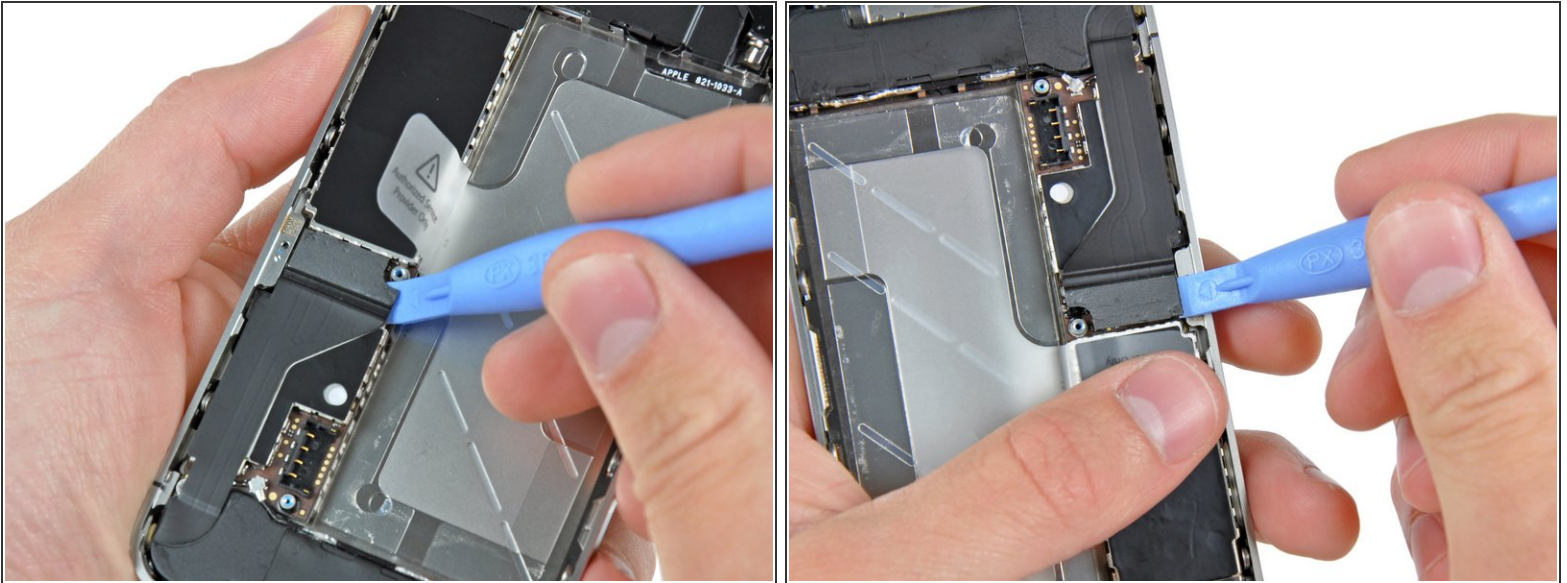
Step 1 — Speaker Enclosure Assembly



- Remove the following two screws:
 - One 1.2 mm Phillips
 - One 1.6 mm Phillips
- Remove the thin steel dock connector cable cover from the iPhone.

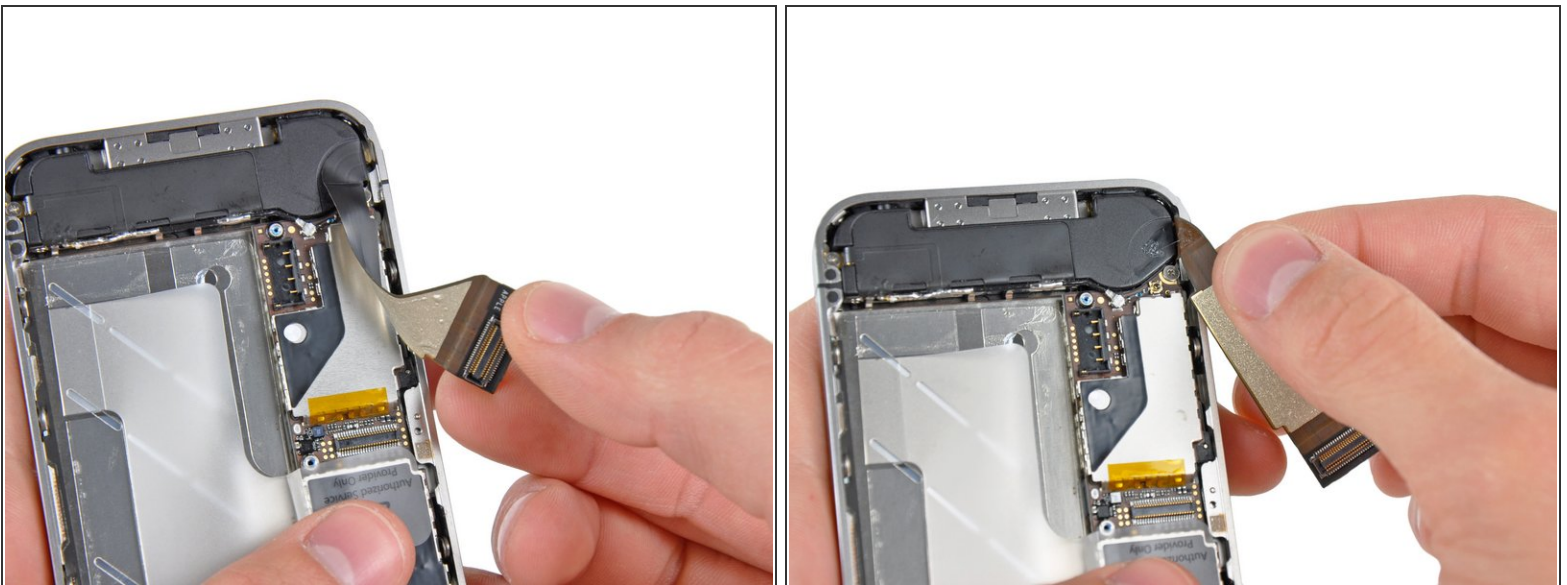
 Before reassembly, be sure to clean all metal-to-metal contact points on the dock connector cable cover with a de-greaser such as windex. The oils on your fingers have the potential to cause wireless interference issues.

Step 2




- Use a plastic opening tool to gently pry the dock cable connector up off the logic board from both short ends of the connector.

Step 3



- Carefully peel the dock ribbon cable off the logic board and the lower speaker enclosure.

 Do not use excessive force to peel the dock ribbon cable off the logic board. Doing so may tear the cable.

Step 4



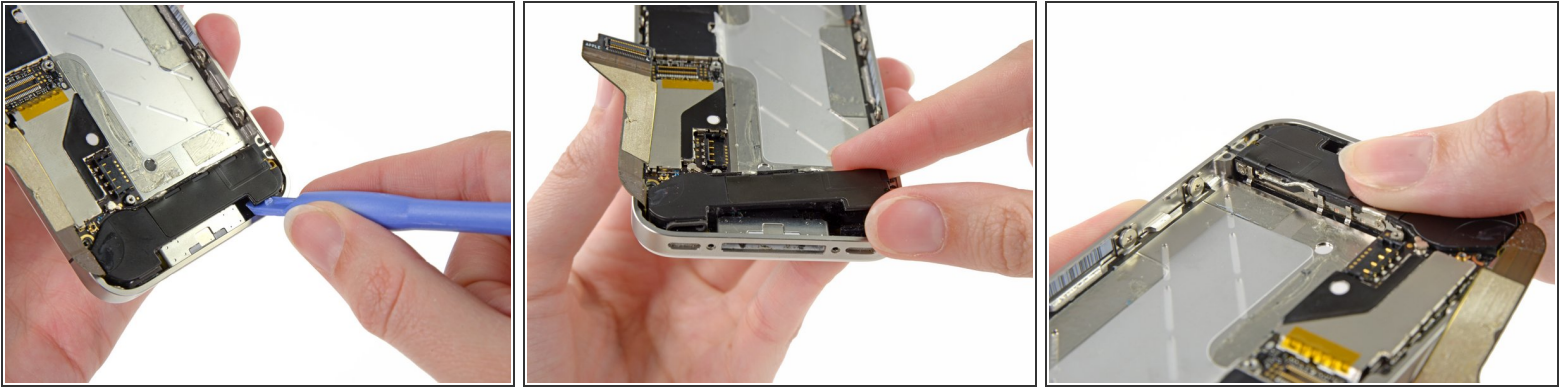
- Use a plastic opening tool to pry the lower antenna connector up off its socket on the logic board.



Step 5



- Remove the following screws securing the speaker enclosure assembly to the outer case:
 - One 1.9 mm Phillips screw
 - One 2.4 mm Phillips screw

Step 6



- Use a plastic opening tool to lift the speaker enclosure assembly out of the case, being sure not to damage the EMI fingers on the attached Wi-Fi antenna.
 - Remove the speaker enclosure assembly.
-  Before reinstalling the speaker enclosure assembly's screws, be sure the Wi-Fi grounding fingers are installed below the lip in the iPhone's metal case as seen in the third picture.
-  Before reassembly, be sure to clean all metal-to-metal contact points between the grounding fingers of the Wi-Fi antenna and the case of the iPhone with a de-greaser such as windex or isopropyl alcohol. The oils on your fingers have the potential to cause wireless interference issues.

To reassemble your device, follow these instructions in reverse order.