



TomTom XXL 540 Back Panel Replacement

This guide shows how to replace the back panel...

Written By: Mike Sollars



INTRODUCTION

This guide shows how to replace the back panel on a TomTom XXL 540.

TOOLS:

[T5 Torx Screwdriver](#) (1)

[Tweezers](#) (1)

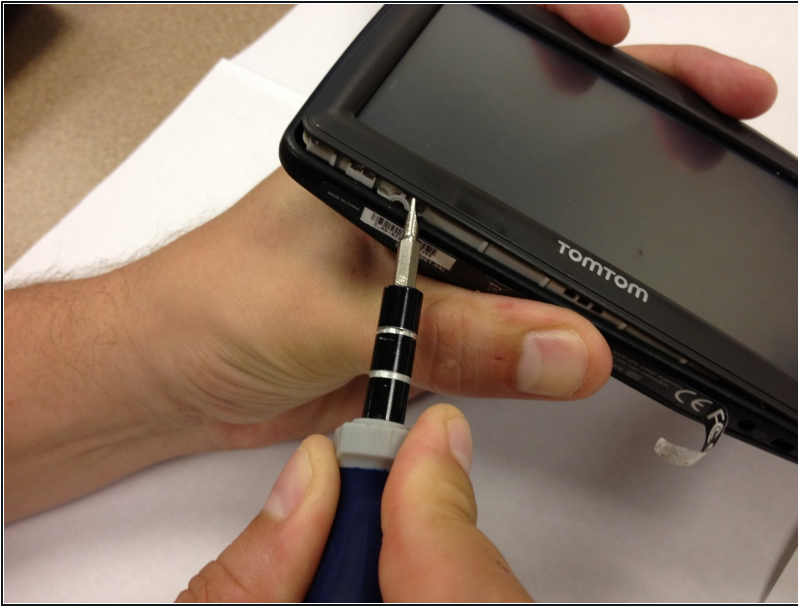
[6-in-1 Screwdriver](#) (1)

Step 1 — Remove the screws



- Using [tweezers](#), peel back the sticker on the bottom of the device to reveal the two T5 screws.
- Use the T5 Torx screwdriver to unscrew the two T5 screws.

Step 2 — Remove the faceplate



- Use a flat edge screwdriver to pry open the faceplate.

Step 3 — Remove the ribbon cable



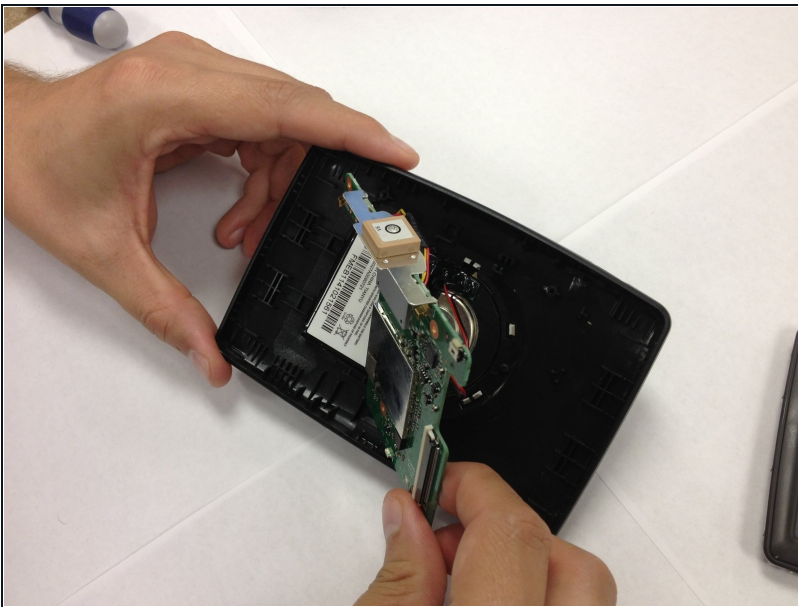
- Release the ribbon cable that connects the two sides.

Step 4 — Remove the screws from the motherboard



- Identify the green motherboard.
- Use the T5 Torx screwdriver to unscrew the three T5 screws that hold the motherboard in place.

Step 5 — Remove the board and battery



- Remove and disconnect the motherboard and battery from the back panel.

Step 6 — Re-attach the board and battery



- Attach the motherboard and battery to the new back panel.

To reassemble your device, follow these instructions in reverse order.