

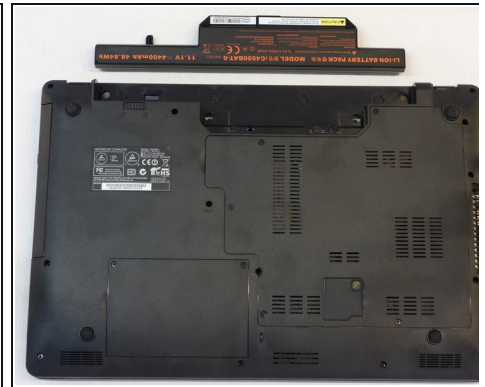
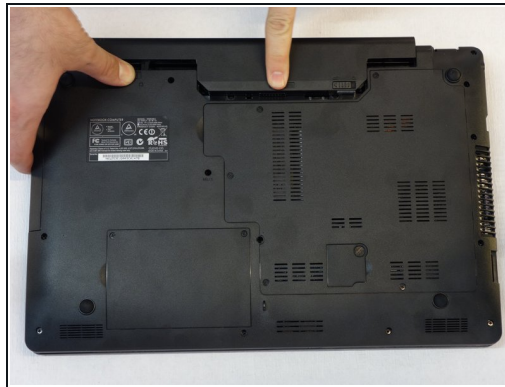
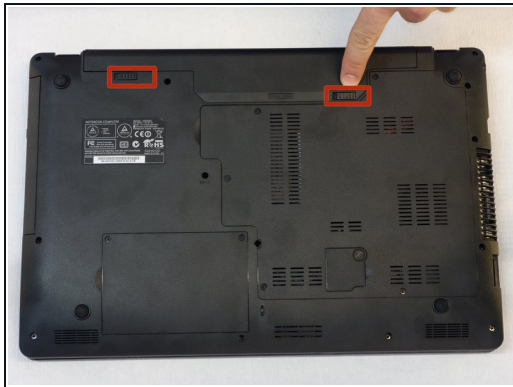


# Motherboard by why! Replace W253EU

Written By: Felice Suglia

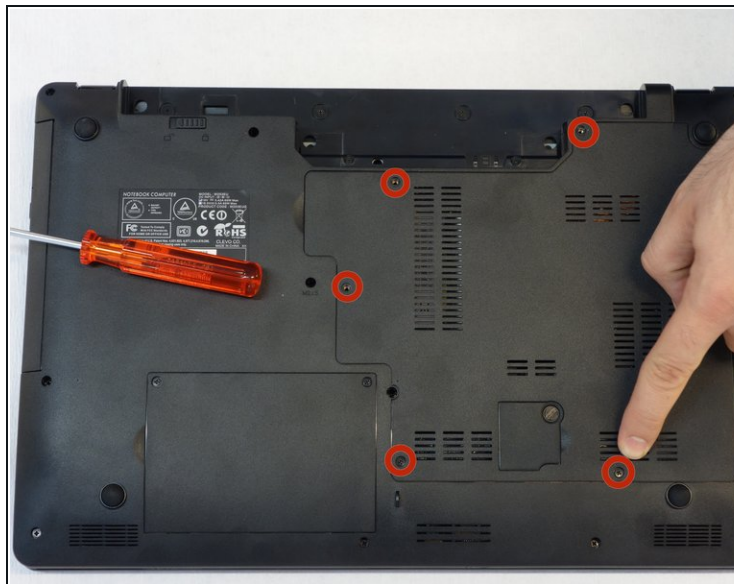
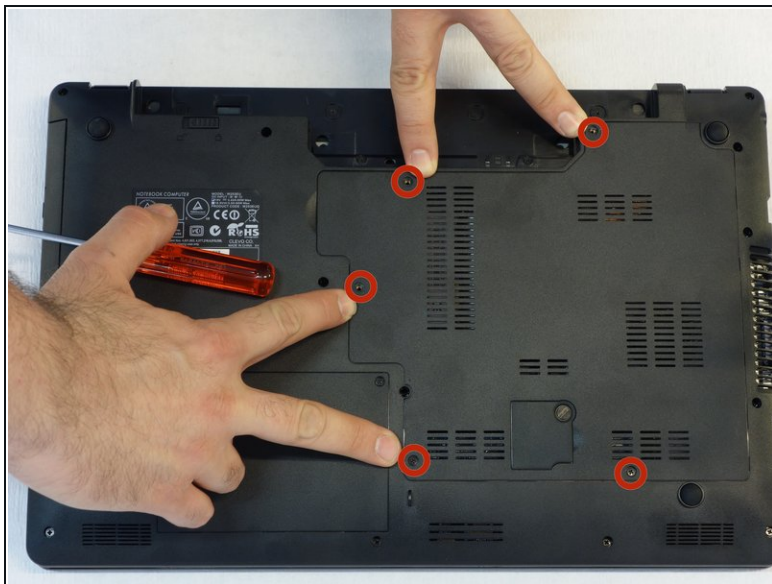


## Step 1 — Battery from why! Remove W253EU



- Turn off the computer.
- ❗ Before each operation it is important to start with the removal of the accumulator.
- Take the slide unlocked into position, remove the battery.

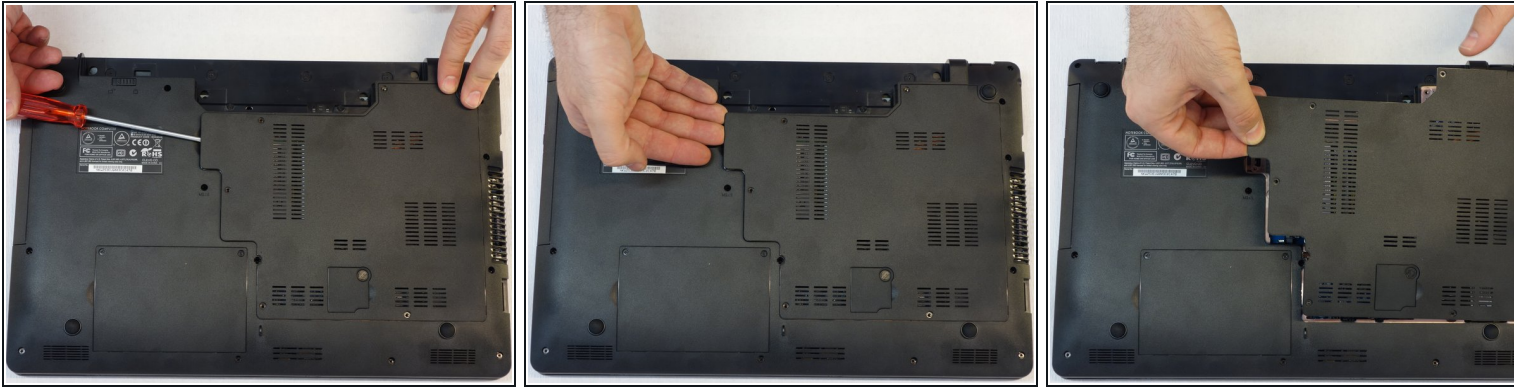
## Step 2 — Access to RAM and CPU from why! W253EU



- Using a Philips #1 screwdriver, unscrew the 5 screws securing the cover.

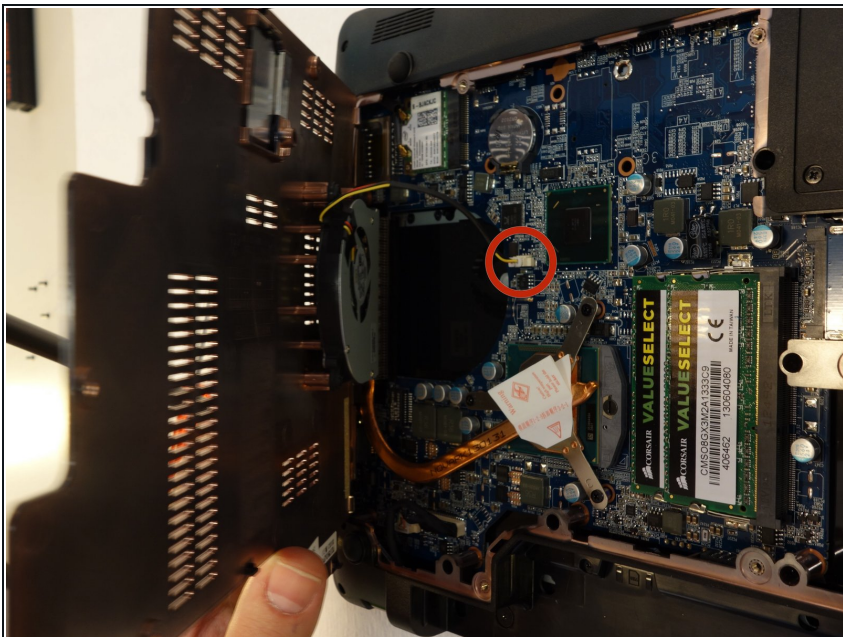


### Step 3



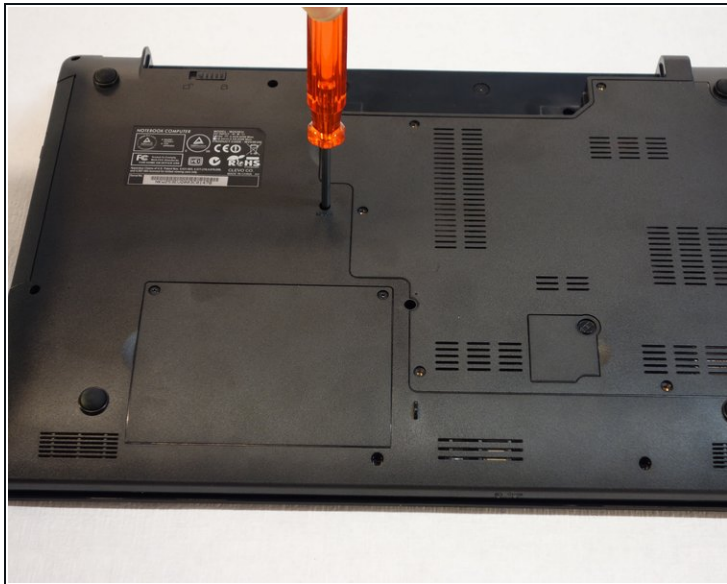
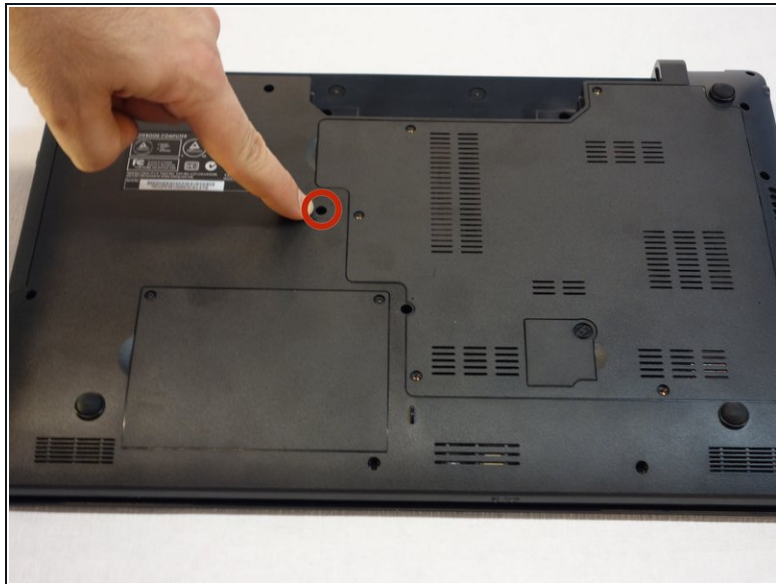
- Push the screwdriver a few millimeters under the cover so that it can be touched with your fingers.
- Now lift the cover carefully.
- Attention! Disconnect the ventilator cable so that the cover can be completely removed (see next step).

### Step 4



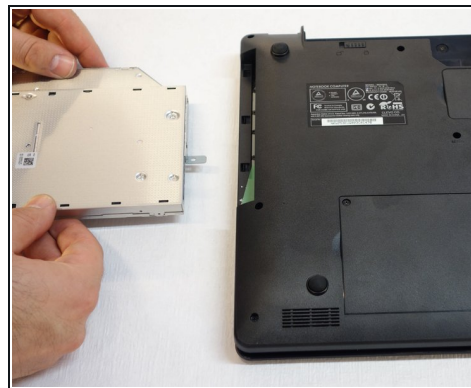
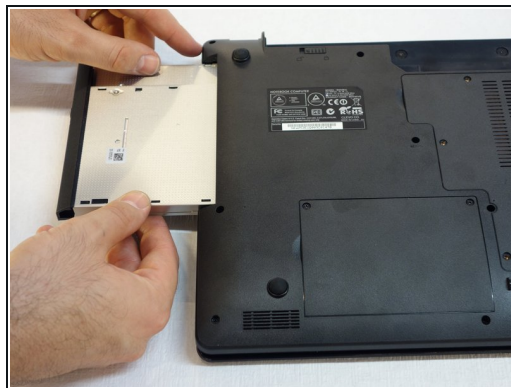
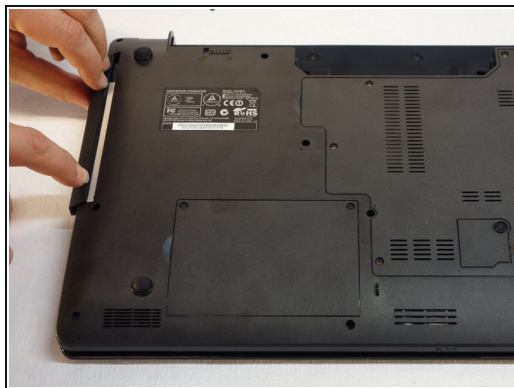
- Since the ventilator is mounted under the cover, its power supply cable must first be disconnected so that the cover can then be completely removed.

## Step 5 — CD / DVD RW drive



- Use a Phillips # 1 screwdriver to screw that holds the CD / DVD drive in place.

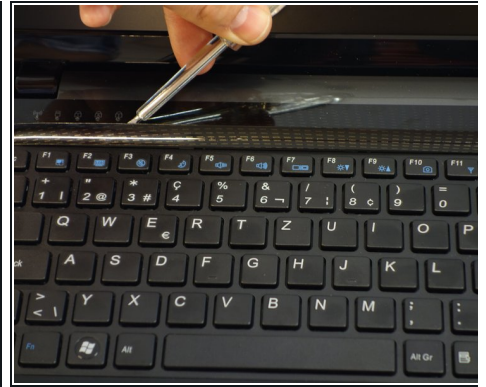
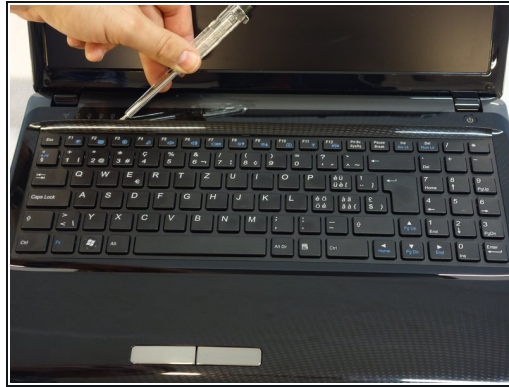
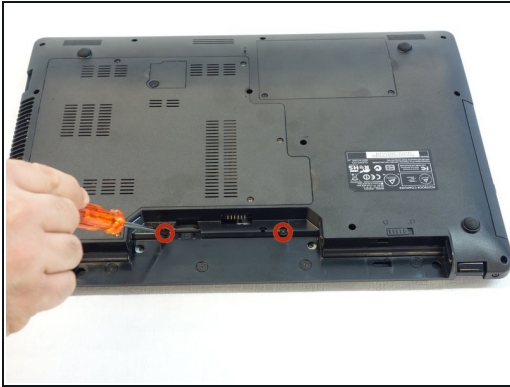
## Step 6



- Pull the CD / DVD drive carefully out

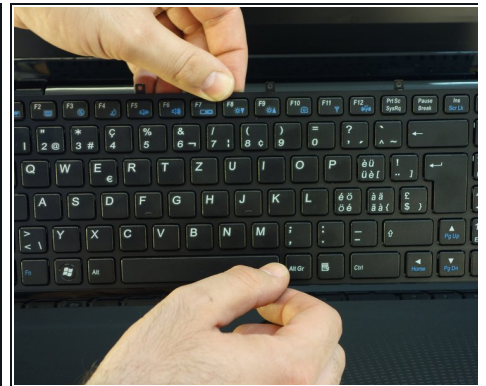
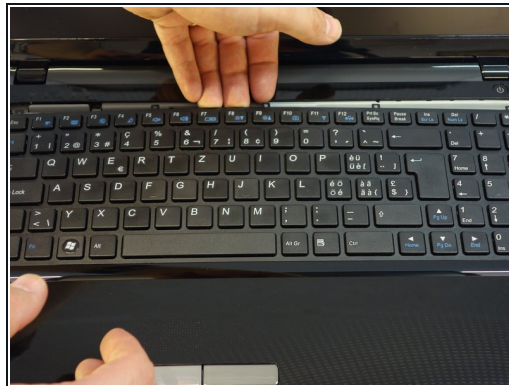
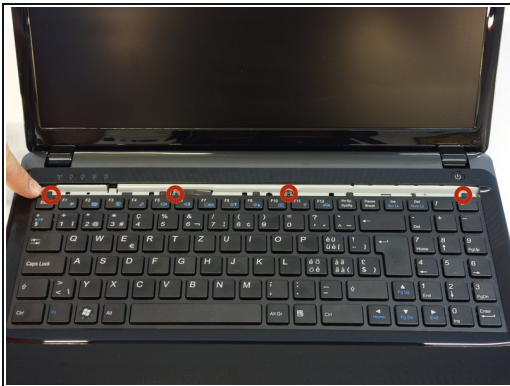


## Step 7 — Keyboard



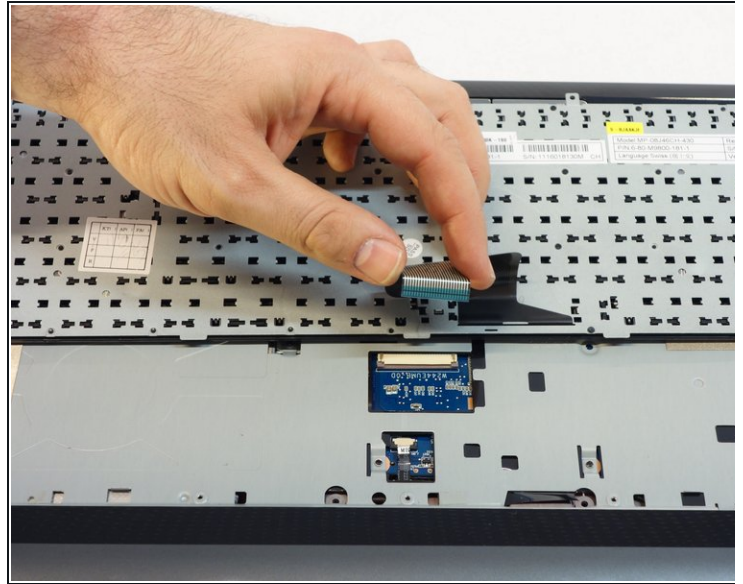
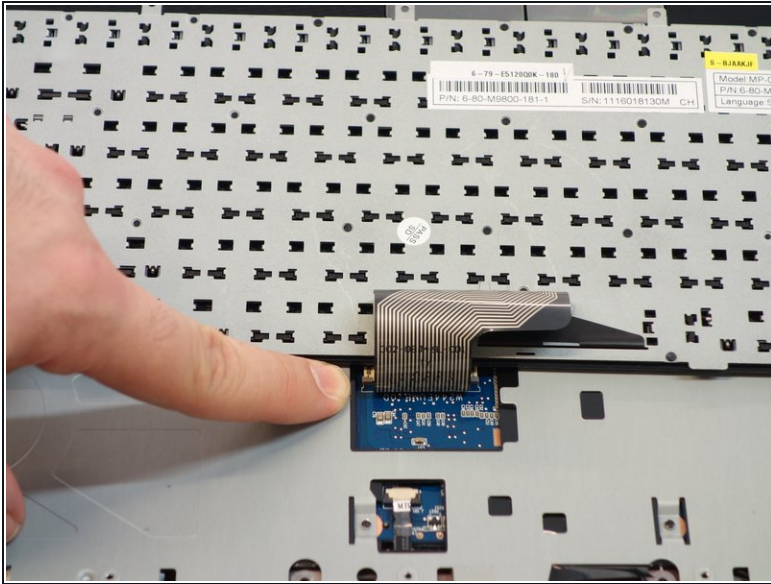
- Use a Phillips # 1 screwdriver to remove the two screws located in the slot of the accumulator.
- Insert a standard screwdriver into the slot in the cover above the keyboard.
- Lift the cover with the usual care.

## Step 8



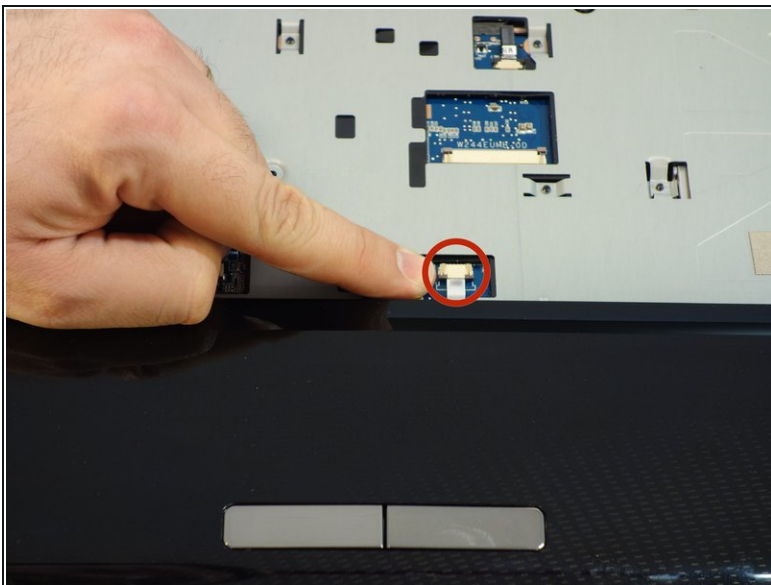
- Use a Phillips # 1 screwdriver to remove the four screws securing the keyboard in the upper part.

## Step 9



- Turn the keyboard towards the screen.
- Carefully remove the connection cable in the direction of the plug axis.

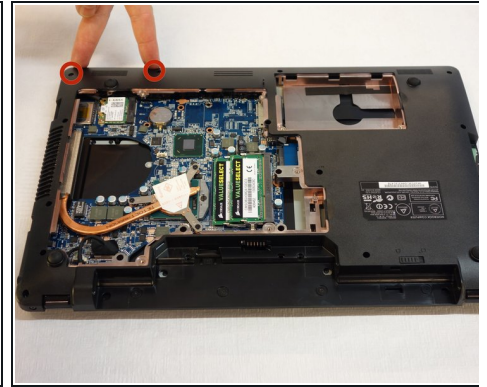
## Step 10 — motherboard



- Disconnect plug A.
- Disconnect plug B.

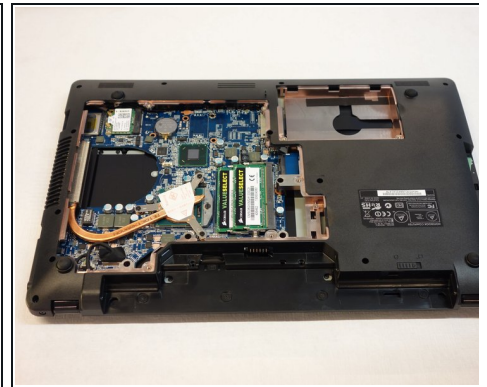
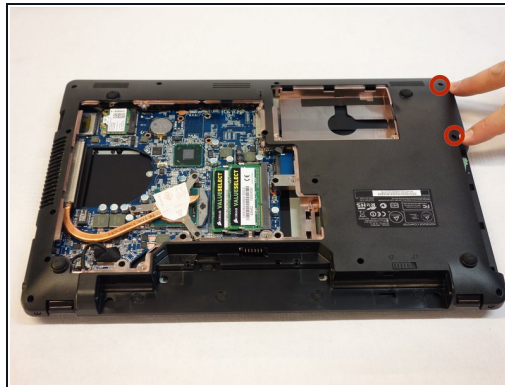
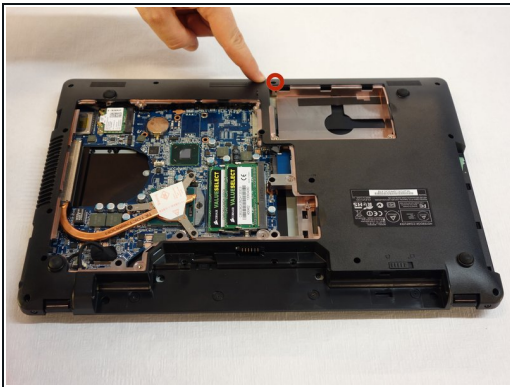


## Step 11



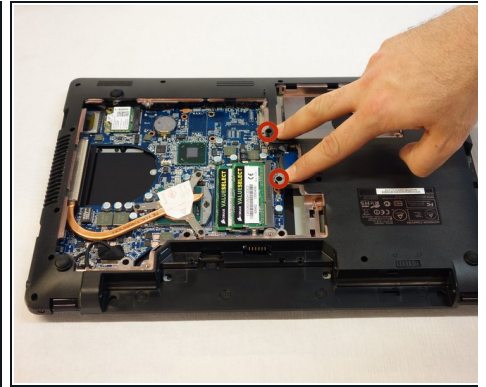
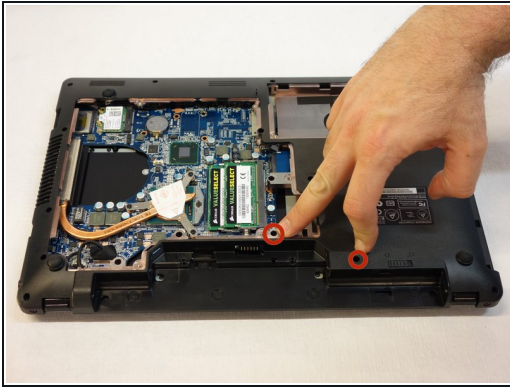
- Using the Phillips # 1 screwdriver, remove the 16 screws that secure the cover.

## Step 12



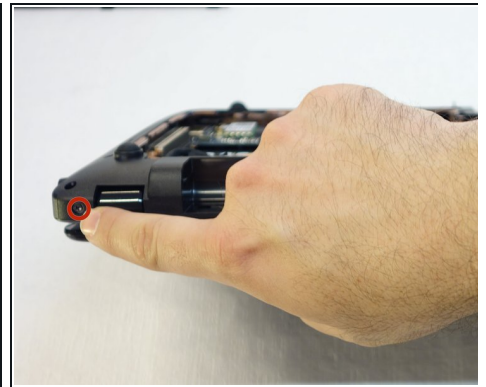
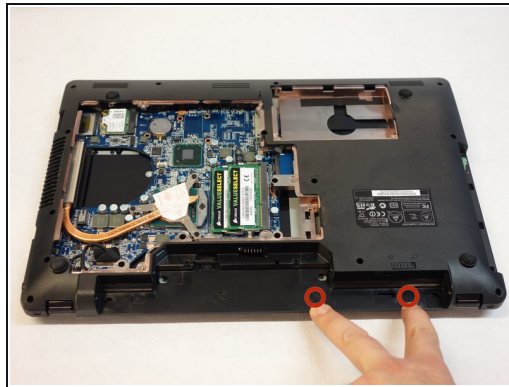
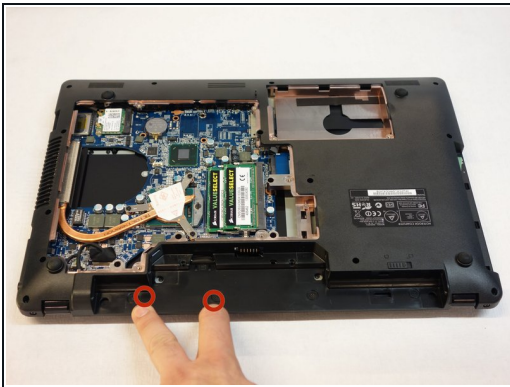
- Using a Phillips #1 screwdriver, remove all 16 screws that secure the entire cover.

## Step 13



- Using a Phillips #1 screwdriver, remove all 16 screws that secure the entire cover.

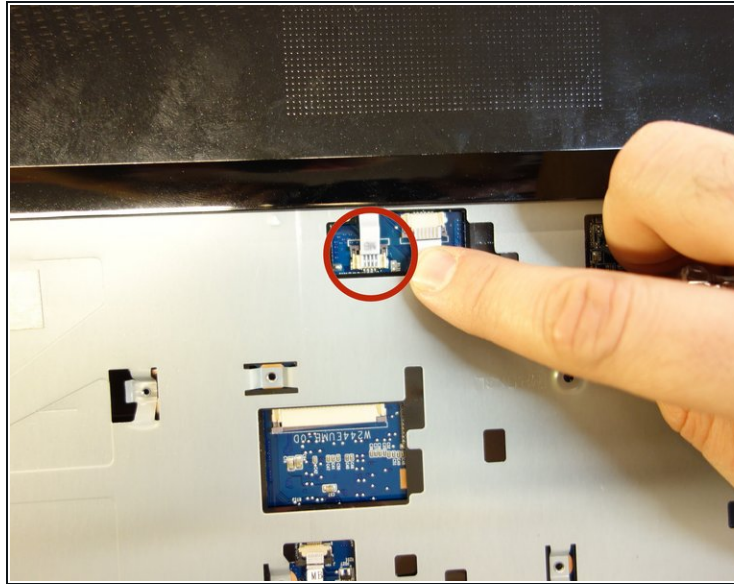
## Step 14



- Using a Phillips #1 screwdriver, remove all 16 screws that secure the entire cover.

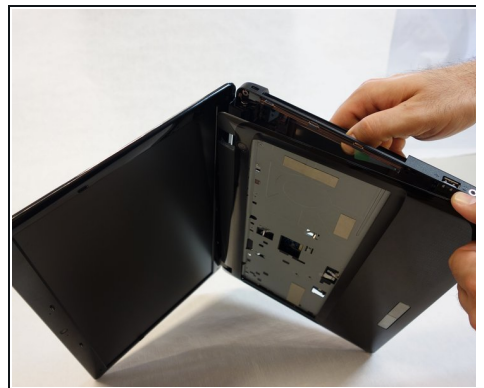
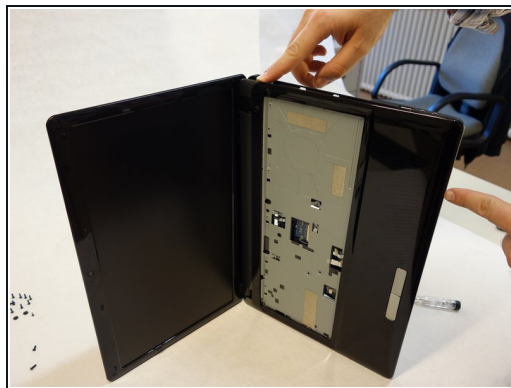


## Step 15



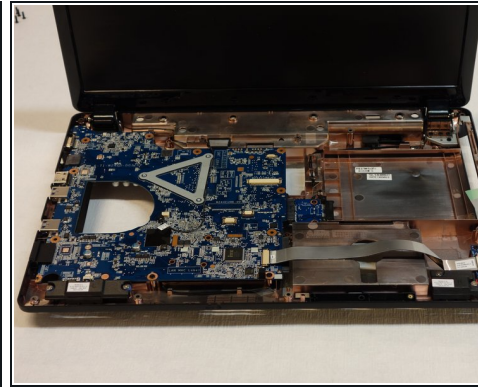
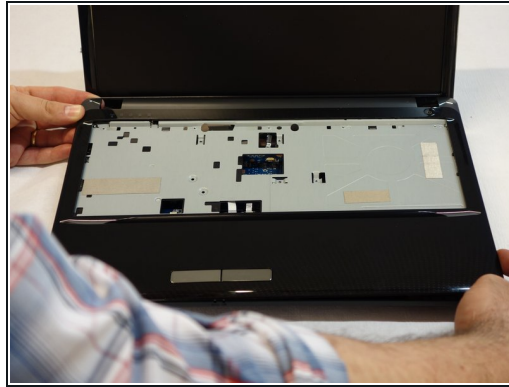
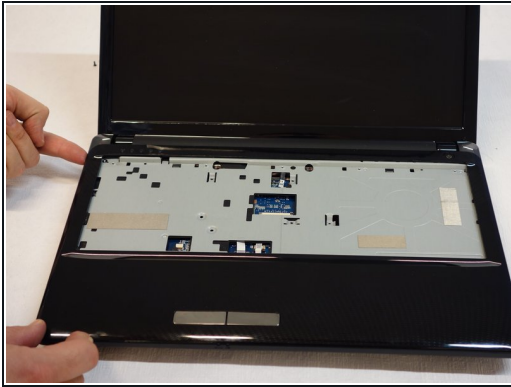
- Using a Phillips #1 screwdriver, remove the other screw located on the back.
- Remove the connector for the touchpad.

## Step 16



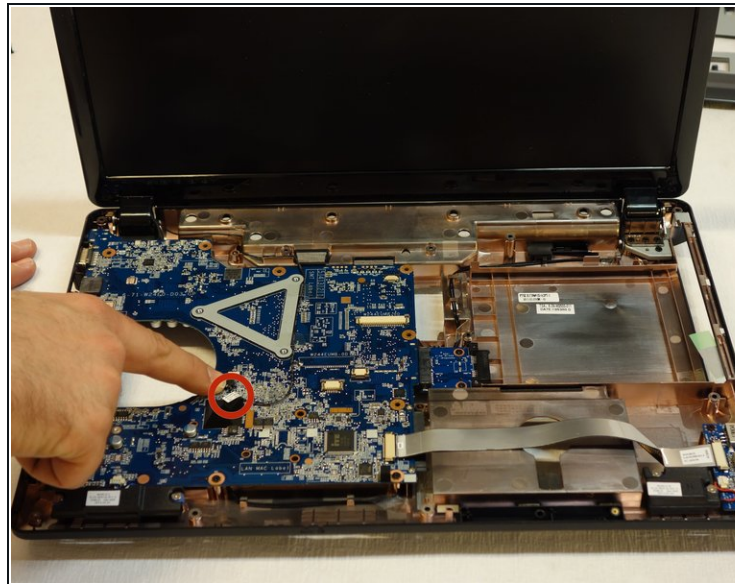
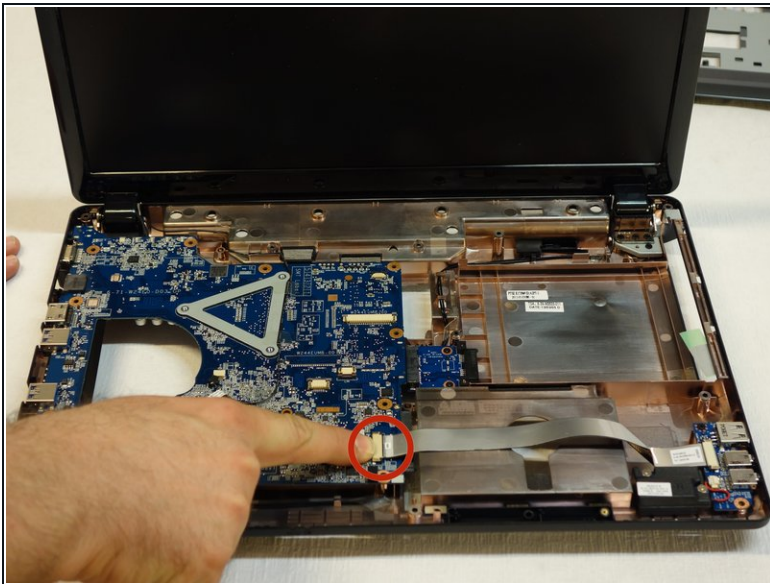
- To remove the keyboard frame, start with the upper part on the right. (Visual access to the clips through the opening of the CD/DVD drive) by inserting a small normal screwdriver or better a small guitar pick
- Then continue with the lower part.

## Step 17



- Proceed with the removal of the keyboard bezel in the clockwise direction.
- Remove the keyboard frame and the motherboard appears.

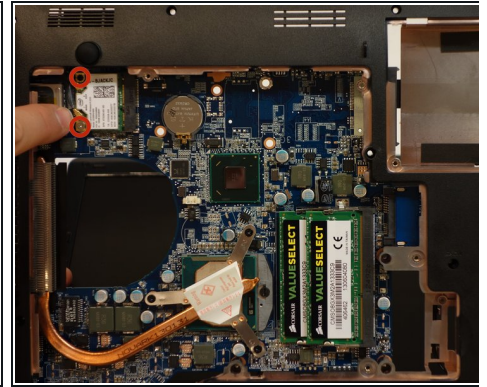
## Step 18



- Unplug the main connector.
- Unplug the small connector in the middle.

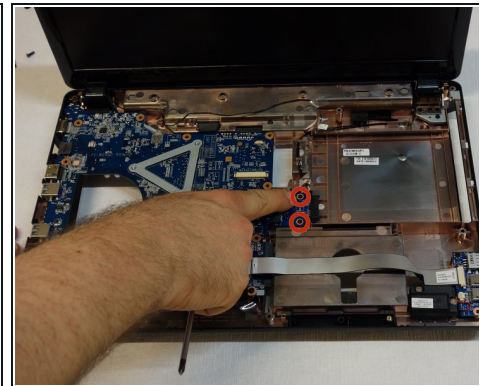
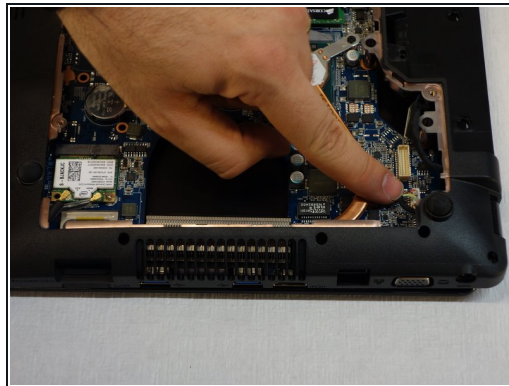
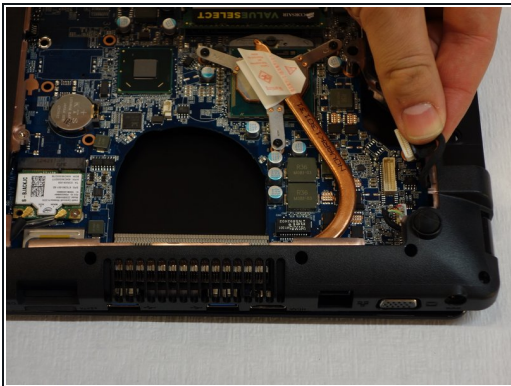


## Step 19



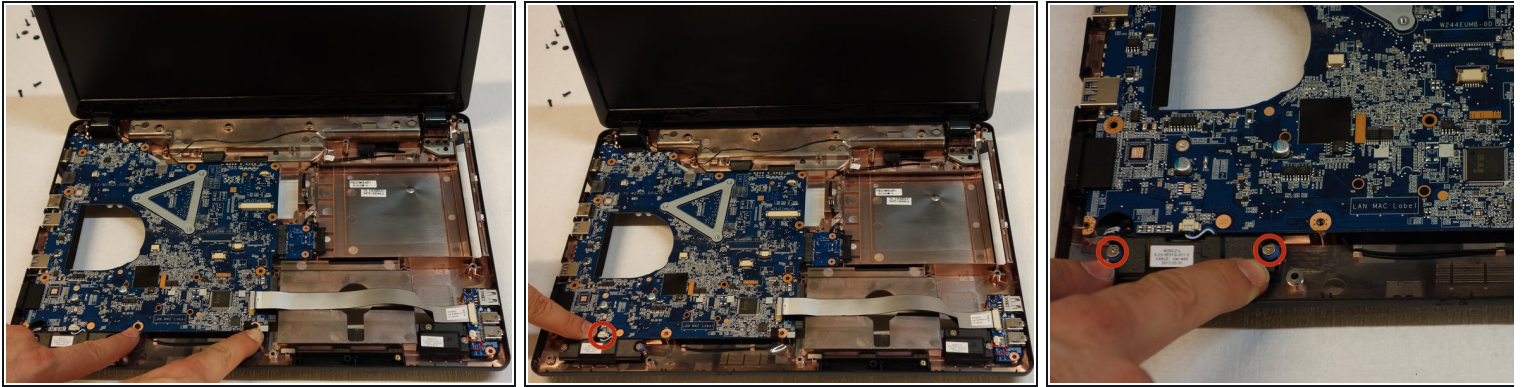
- Turn the computer over and unplug the connector near the processor (CPU).
- Remove the other connector that is immediately to the right of it.
- Using a Philips #1 screwdriver, remove the 2 mounting screws of the Wi-Fi chipset.

## Step 20



- Unplug the plug that is positioned in the back
- Disconnect the small connector that is right next to the first connector.
- With a Philips #1 screwdriver, remove the screws outlined in red.

## Step 21



- Using a Philips #1 screwdriver, remove the 10 mounting screws from the motherboard.
- Disconnect the small connector that is located in the front.
- With a Philips #1 screwdriver, remove the 2 screws that are crosswise and marked with blue circles.
- Take out the motherboard.

For reassembly, follow the instructions in reverse order.