



---

# INTRODUCTION

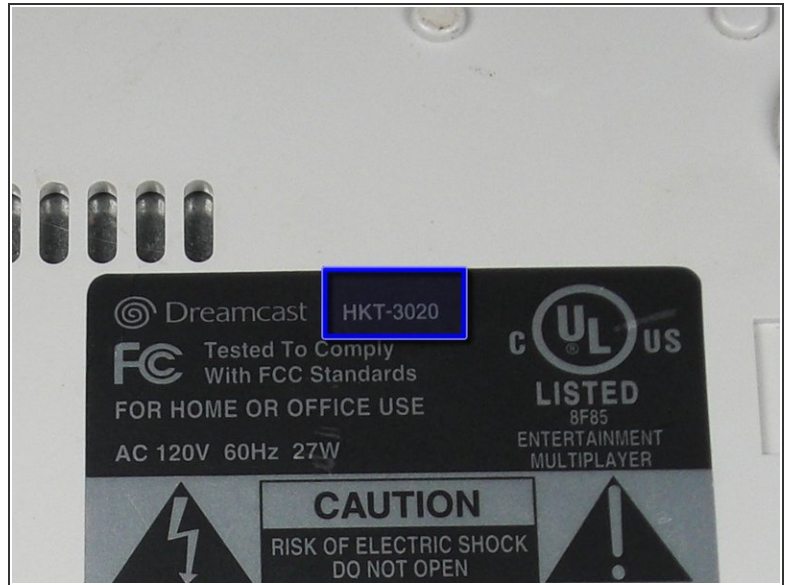
A guide to remove the Logic Board from the Sega Dreamcast.



## TOOLS:

- [Anti-Static Wrist Strap](#) (1)
  - [Phillips #00 Screwdriver](#) (1)
  - [Phillips #2 Screwdriver](#) (1)
-

## Step 1 — Expansion Bay



⚠ Verify that the console is disconnected from the AC outlet before you begin.

- Flip the console over on its back.
- Take note of your model number , in case replacement parts are needed.

## Step 2



- Remove the expansion bay by applying pressure to the small clip on the expansion bay while prying it away from the console.



## Step 3 — Top Cover



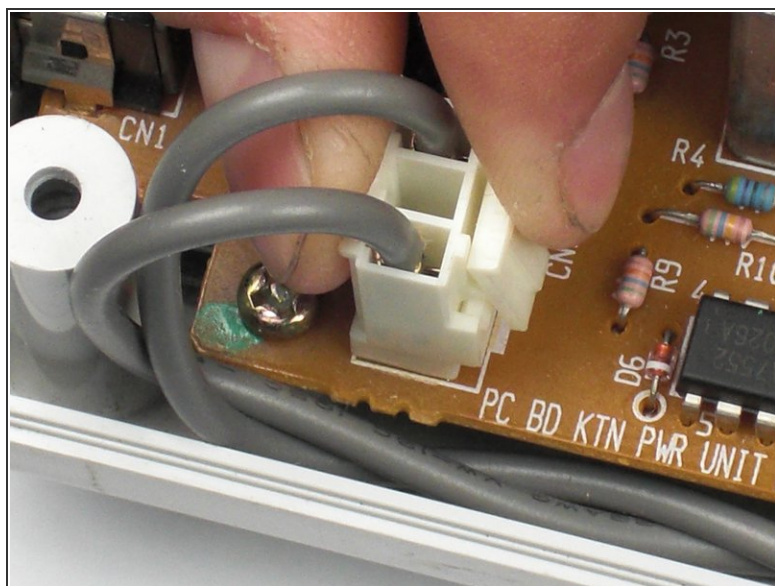
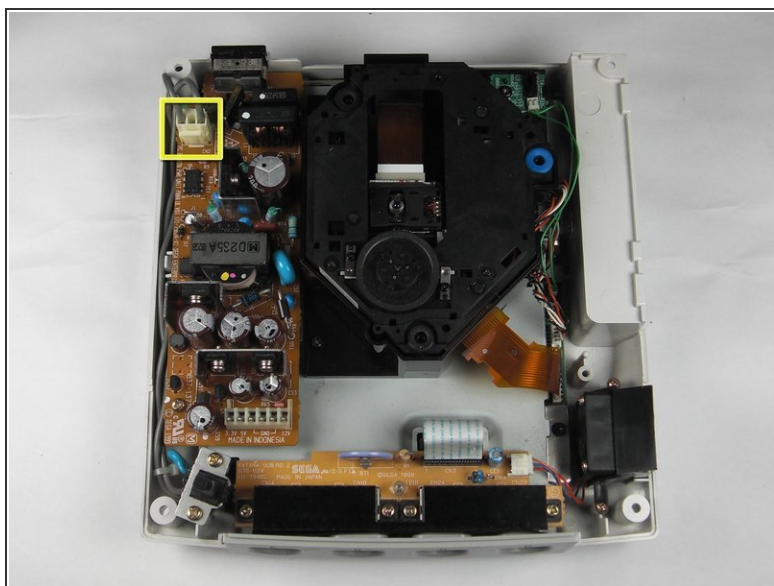
- **Locate and remove all four black 12mm Phillips #02 screws** from the underside of the console.
- ⓘ **Note:** Remove the expansion bay to locate the fourth screw

## Step 4



- ⚠ **Internal components can be loose.** Be careful that they do not fall out when removing the cover.
- Turn the console right side up.
- **Remove the top cover** by gently lifting the upper portion of the console.

## Step 5 — Power Block (Power Supply)

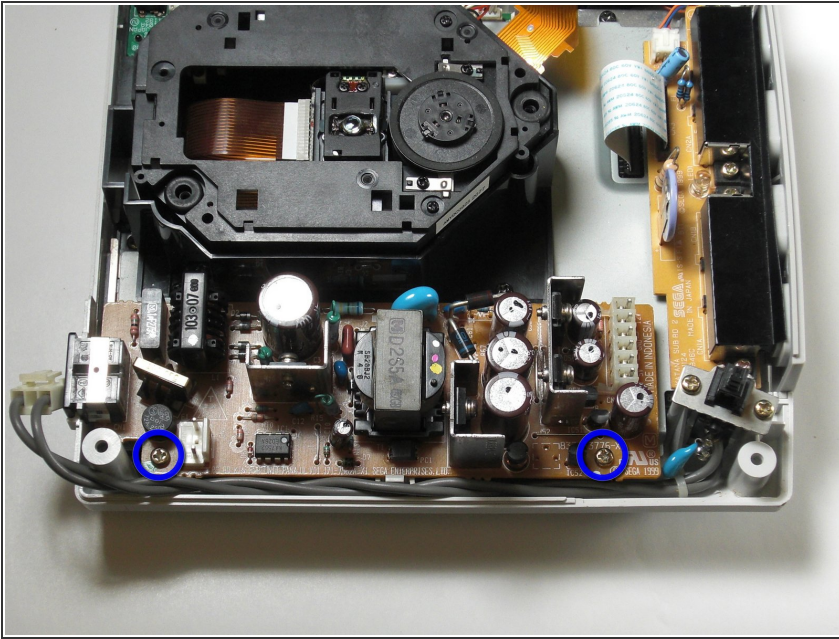


**⚠ Verify that the console is disconnected from the AC outlet before you begin. If you have just powered off the system, give the capacitors a few minutes to discharge before you begin working.**

- **Remove the white female pin header** by clamping the clip and pulling it up gently from the power board.

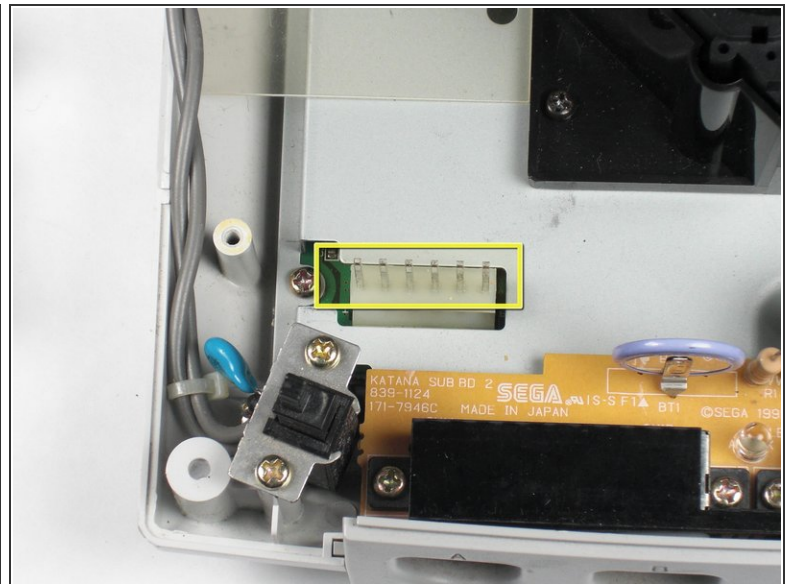
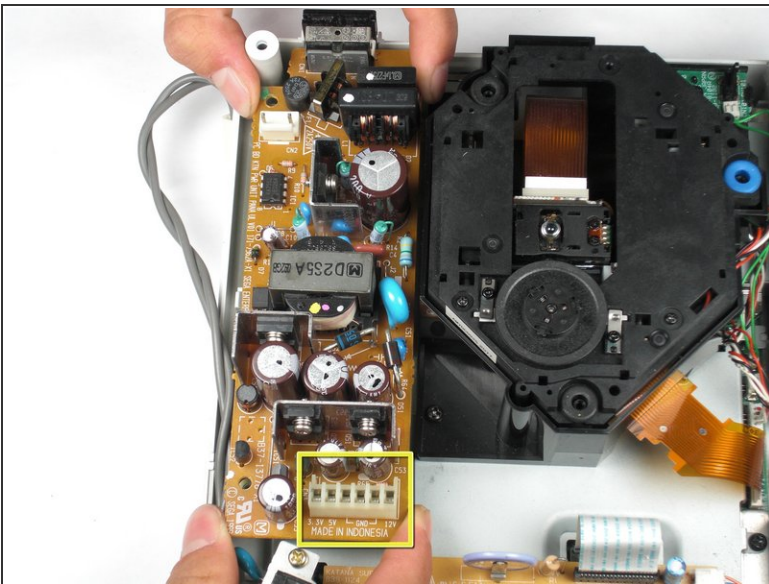


## Step 6



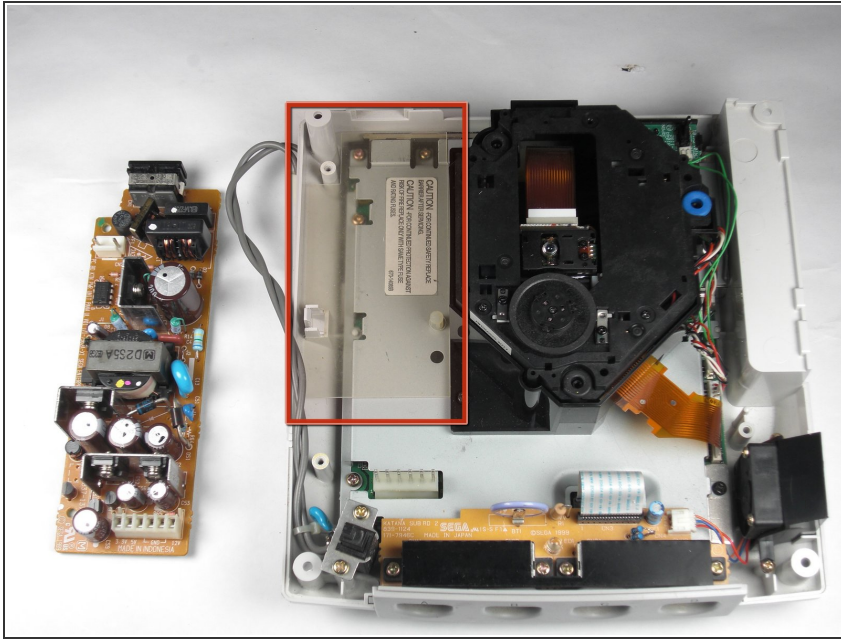
- **Remove the two 10mm Philips #02 screws** that are fastened to the power block.

## Step 7



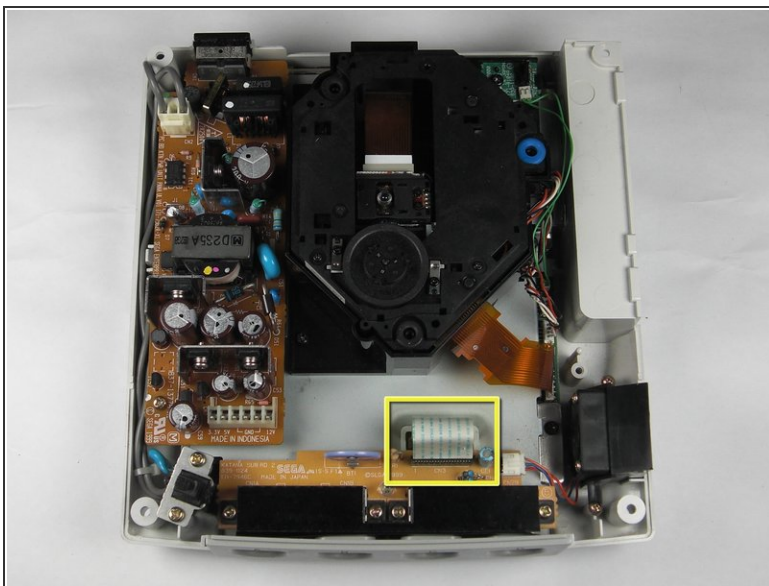
- **Do not bend the male pin header** between the mounted head when you remove the power supply from the chassis.
- **Remove the power board** by using both hands to gently lift the power board away from the console.

## Step 8



- **Remove the clear plastic film** that is tucked between the power supply and the chassis.

## Step 9 — Controller Port

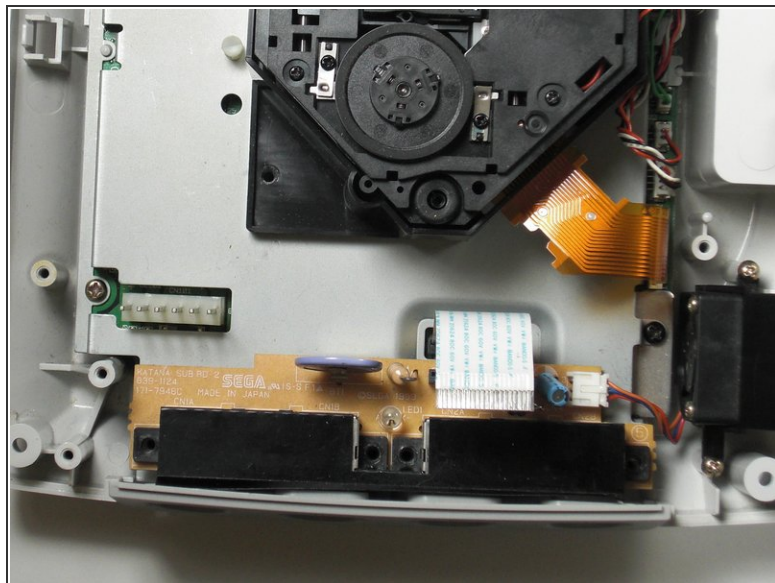
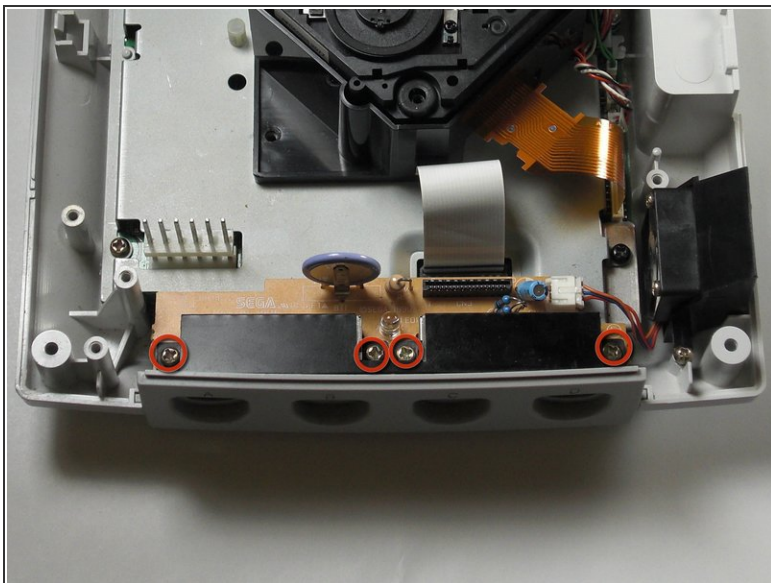


⚠ Be gentle with the white controller cable as it can be a bit fragile.

- **Disconnect the white controller cable** by gently pulling the the cable while wiggling it back and forth until it detaches from the controller board.

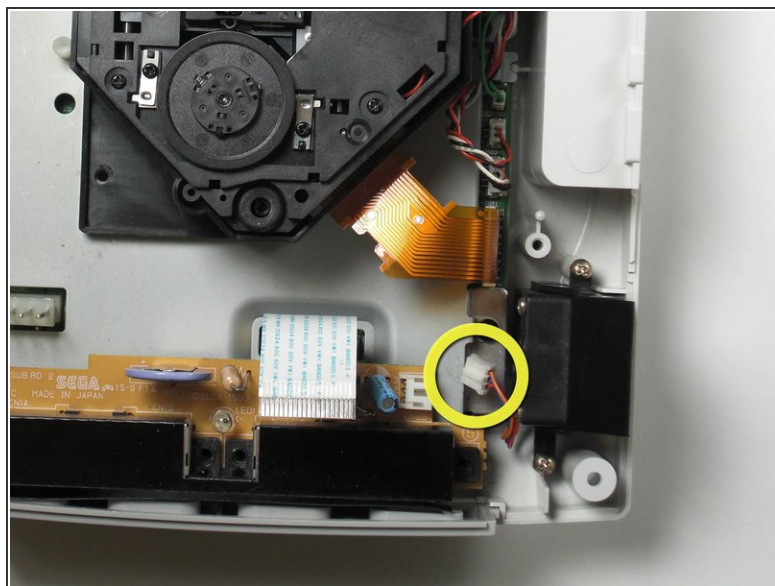
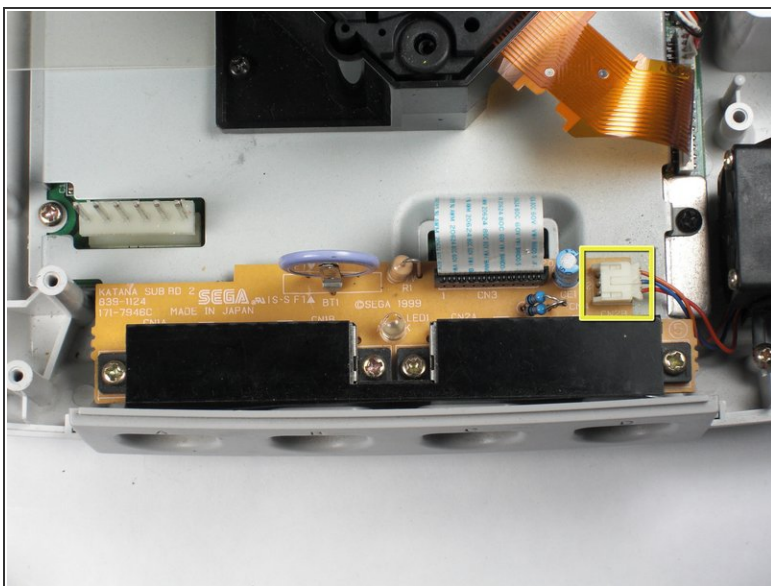


## Step 10



- **Remove the four 14mm Philips #02 screws** located on the controller board.

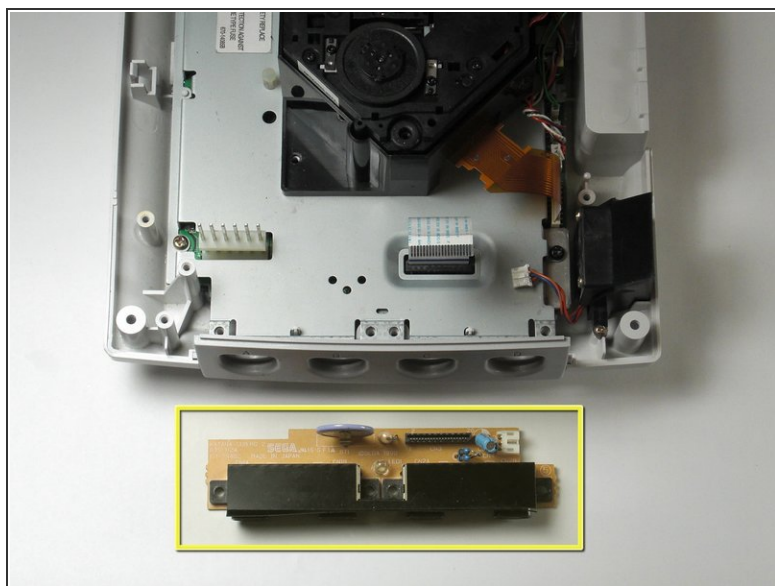
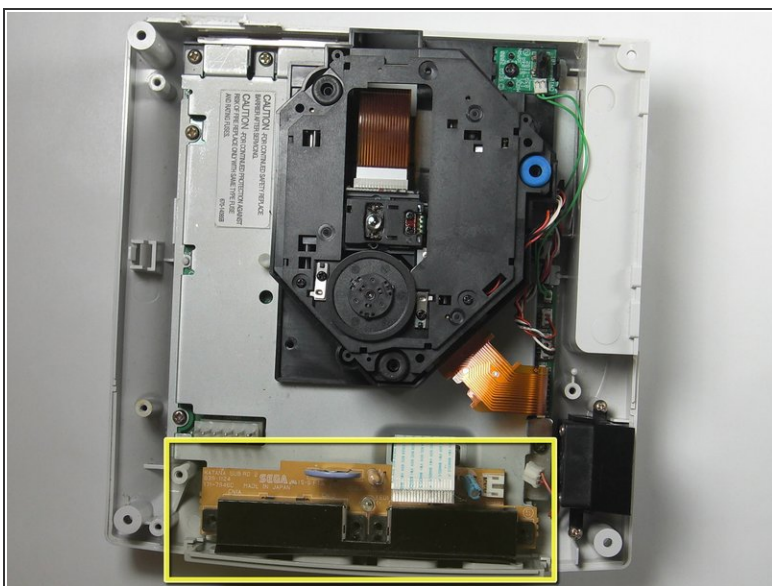
## Step 11



- **Disconnect the white fan header** from the controller port.

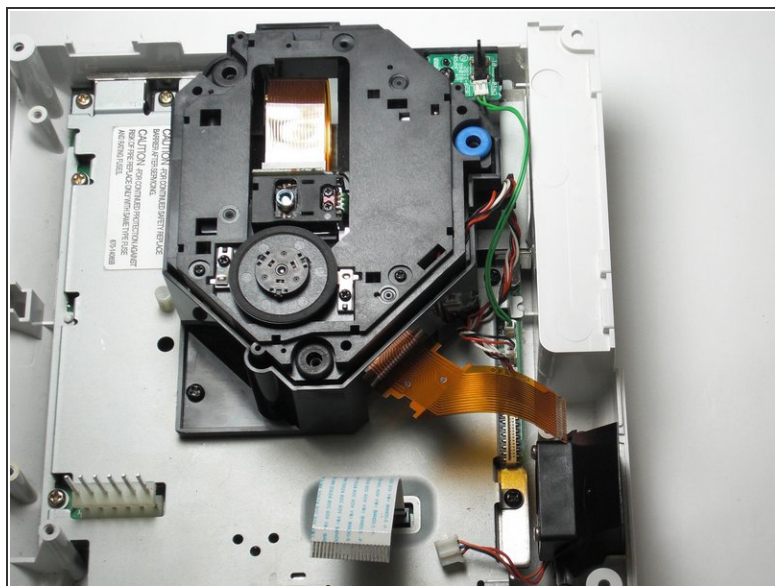
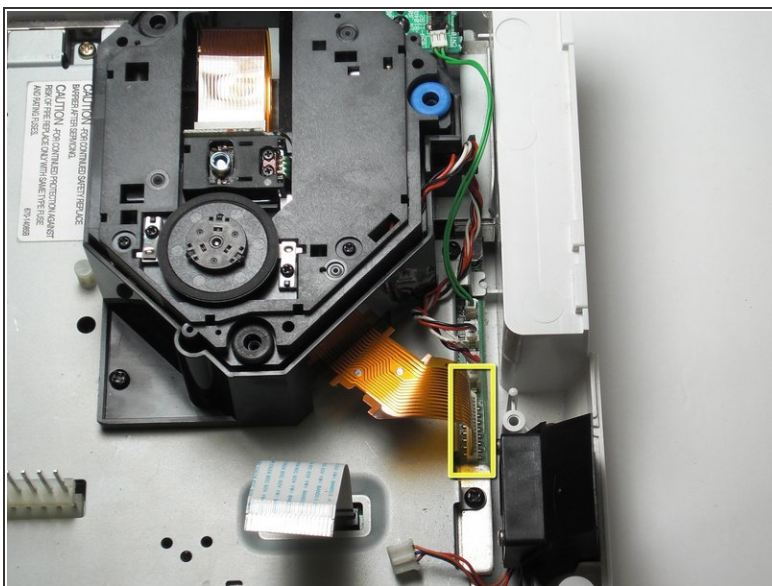


## Step 12



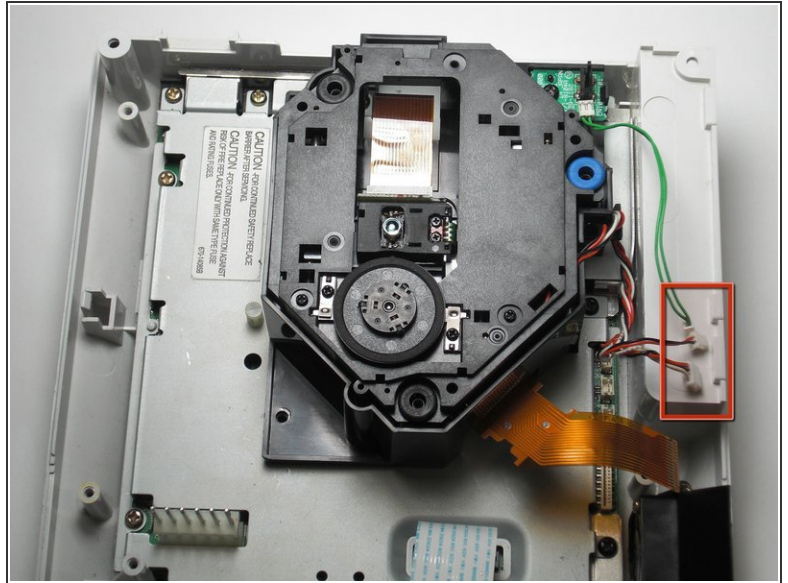
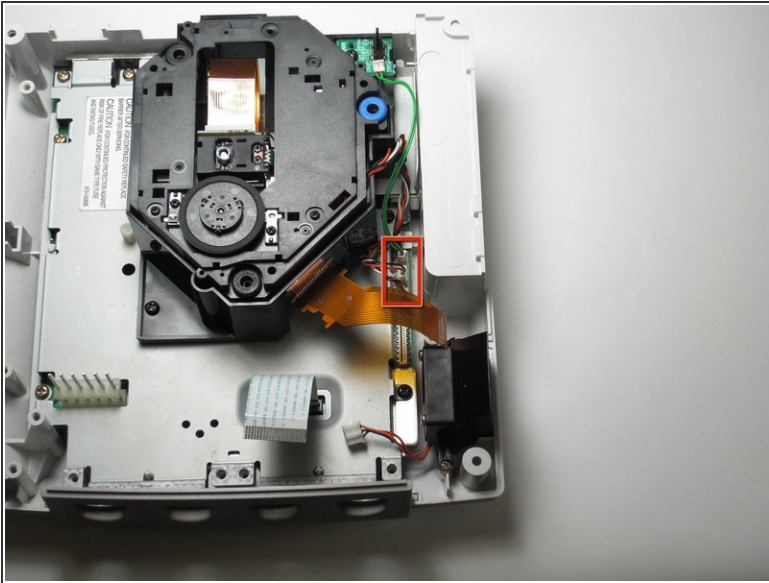
- **Remove the controller board** by lifting it up from the controller port.

## Step 13 — GD-ROM



- **Detach the orange cable** by giving it a gentle pull while wiggling the cable back and forth until it loosens from the logic board.

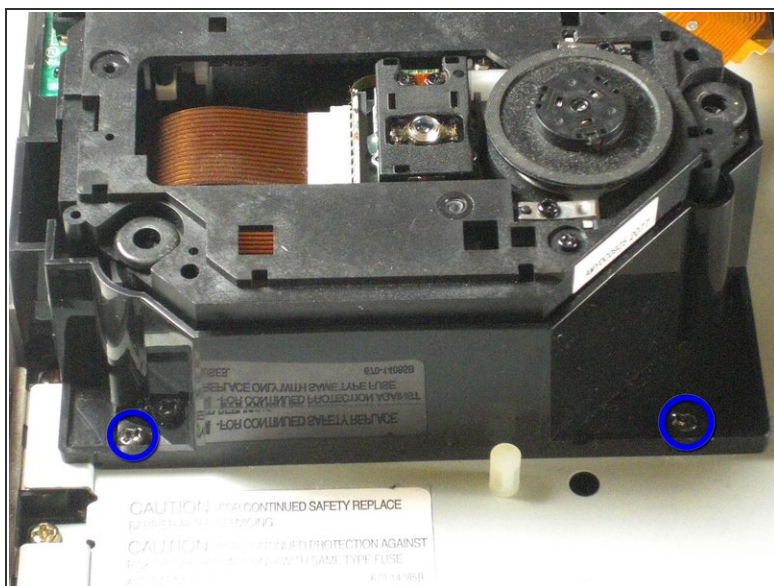
## Step 14



- **Detach the cables** by gently pulling the three GD-ROM cables to remove them from the logic board.



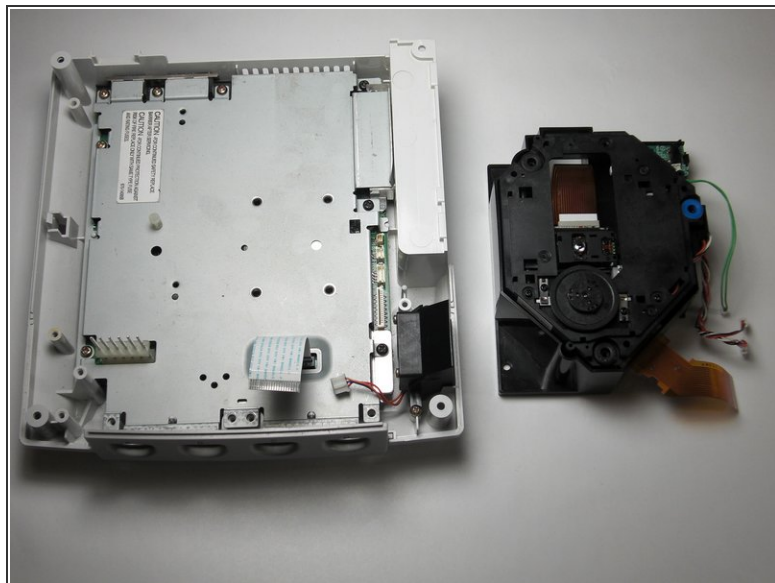
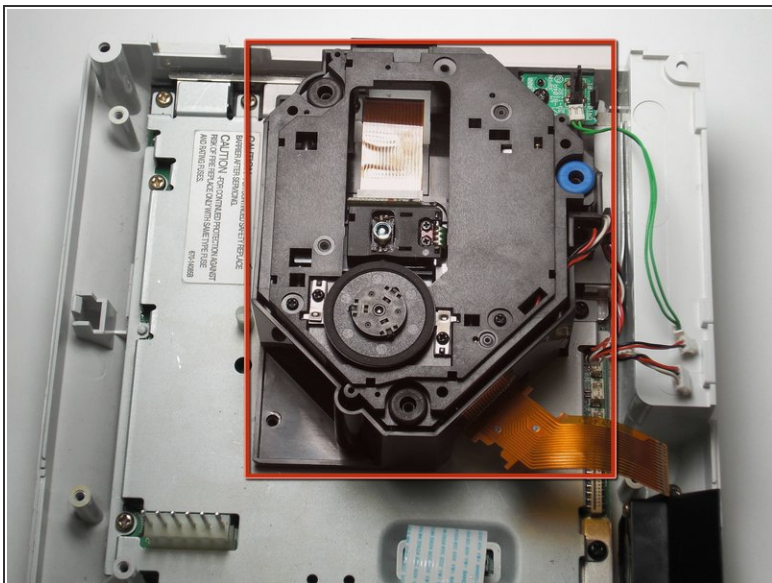
## Step 15



- **Remove the two black 12mm Philips #02 screws** located on the left side of the GD-ROM bracket.
- ⓘ The console is rotated 90 degrees counter-clockwise in the first photo. The second photo depicts the normal position.



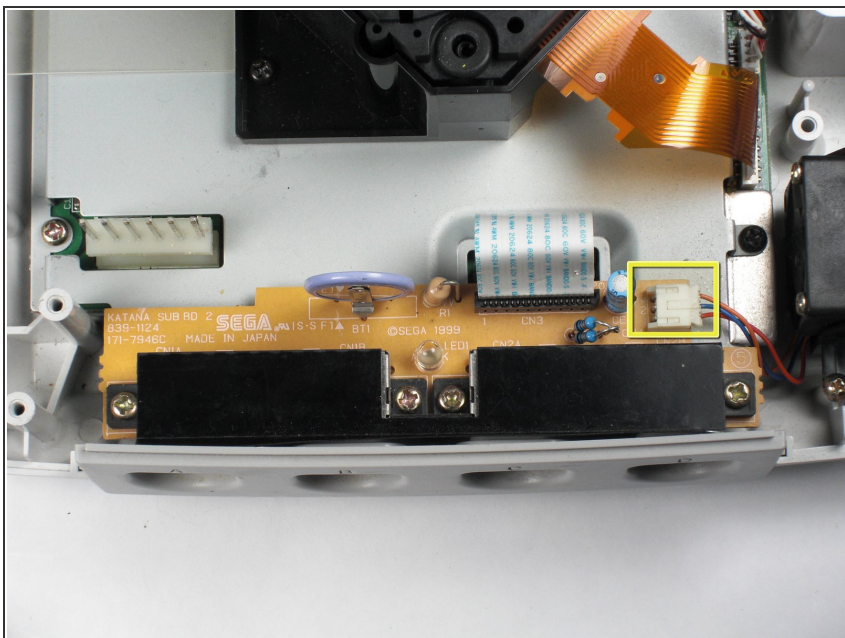
## Step 16



⚠ When lifting the GD-ROM, be careful that the top half of the casing does not detached from its base.

- **Remove the GD-ROM** by gently lifting it from its base.

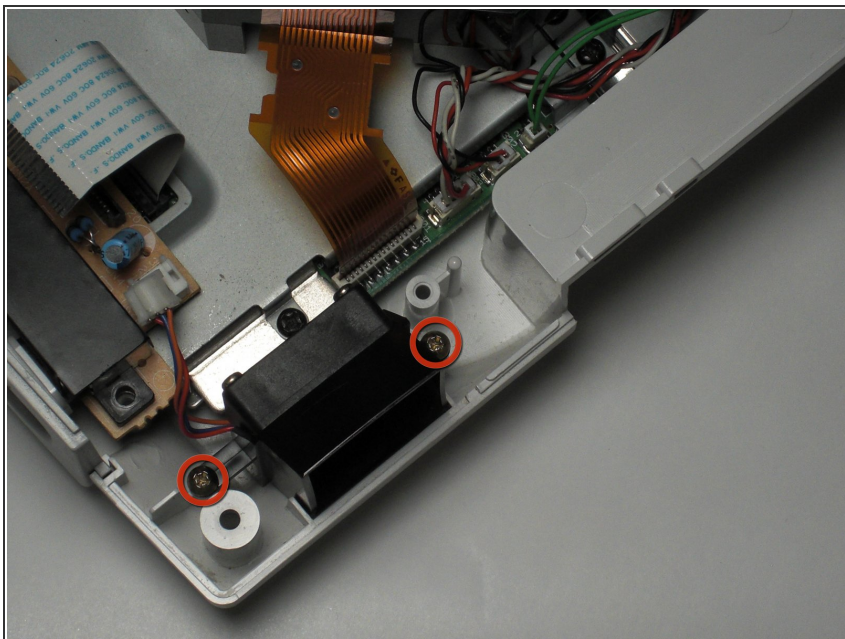
## Step 17 — Fan



- **Remove the white fan header** by gently pulling it away from from the controller port.

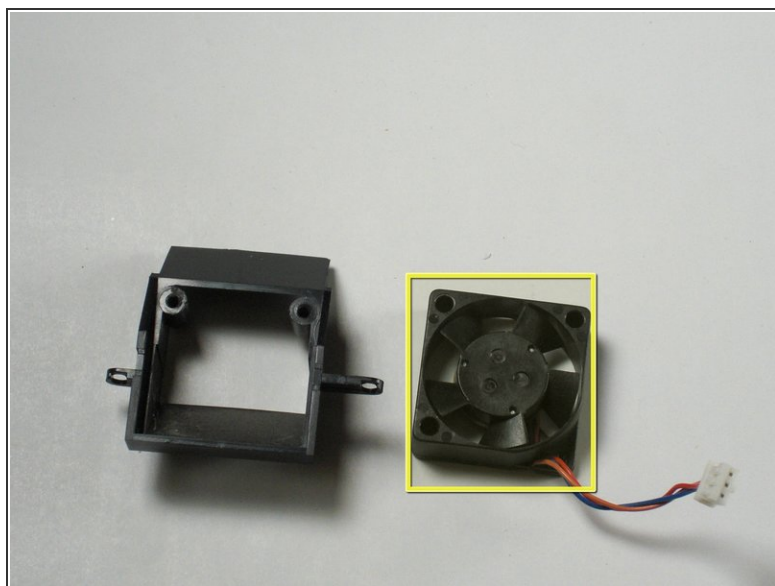
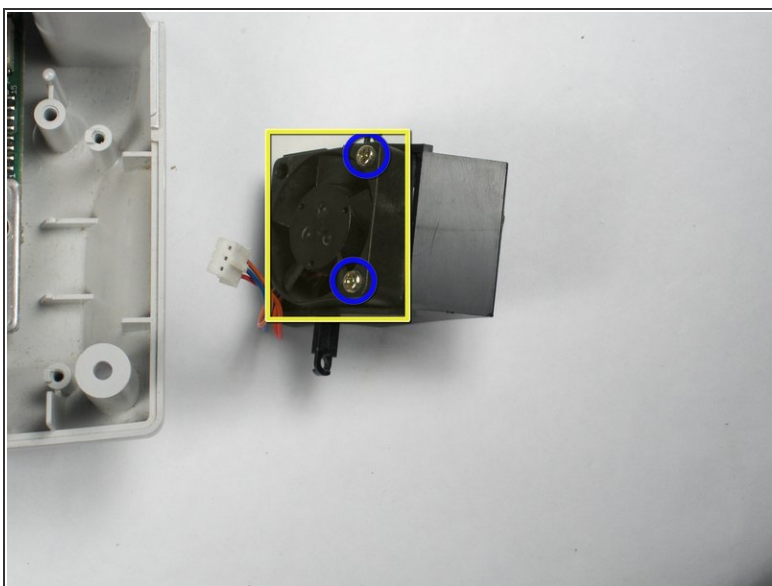
ⓘ The white fan header may already be detached if you have completed the Controller Port Disassembly Guide.

## Step 18



- **Remove the two 8.5mm Philips #00 screws** from the fan bracket.

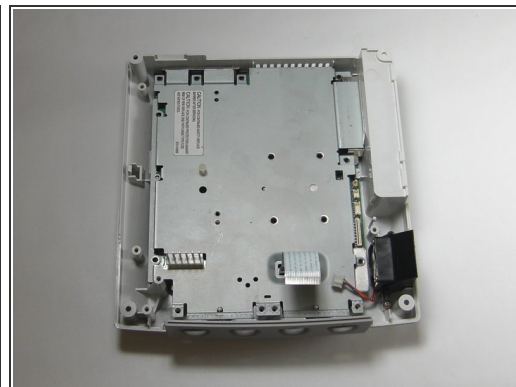
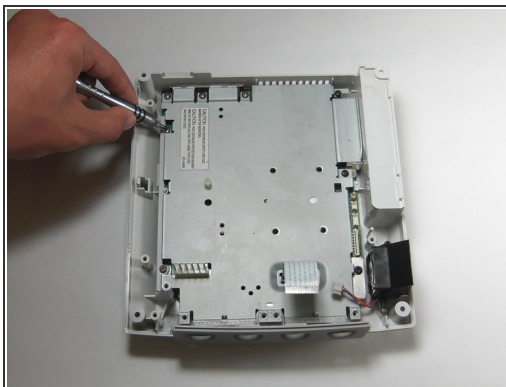
## Step 19



- **Remove the two 17.5mm Philips #00 screws** from the fan bracket.
- **Remove the fan** from the bracket.

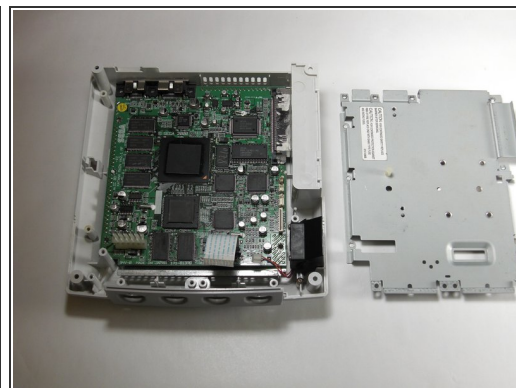
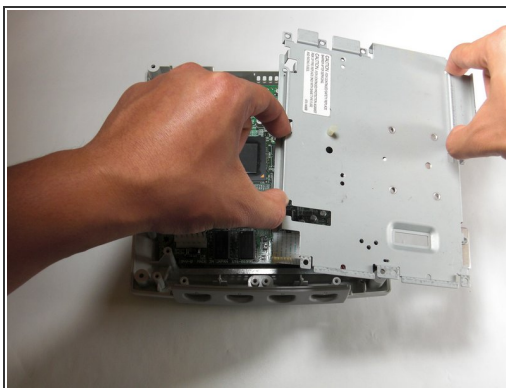
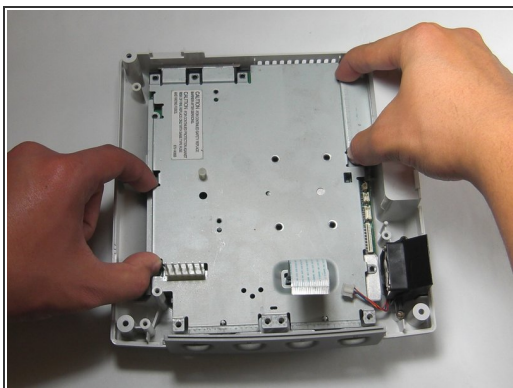


## Step 20 — Logic Board



- Remove the five 10mm Philips #02 screws from left side of the logic board cover.
- Remove the three black 12mm Philips #02 screws from the right side of the logic board cover.

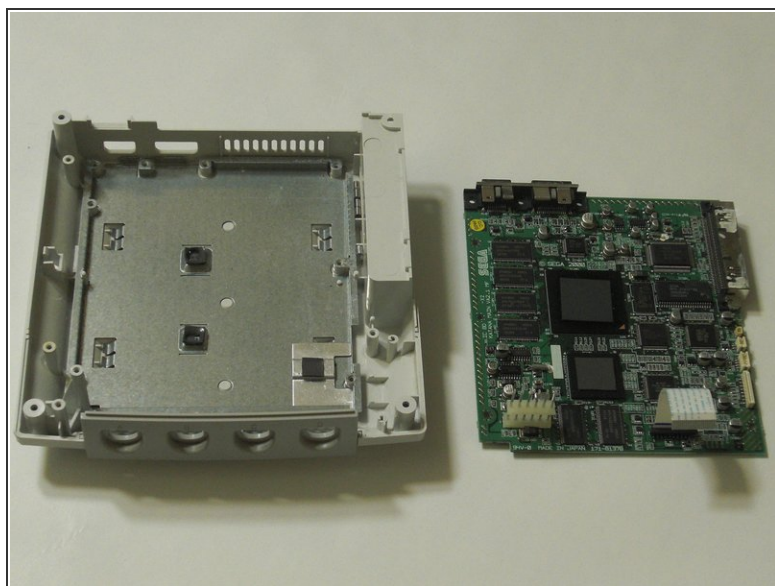
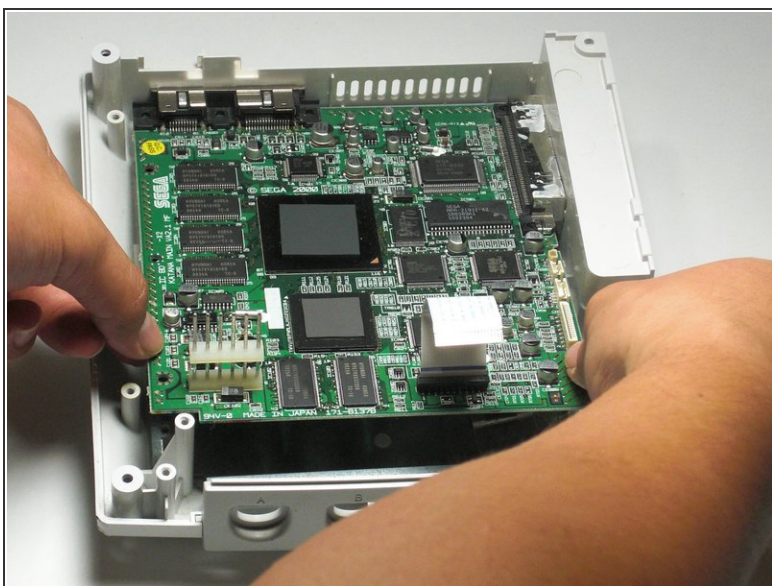
## Step 21




- Lift the metal cover from the console.



## Step 22



 Before handling the logic board, you may want to use a grounding strap to protect the device from static charge. If you do not have a grounding strip, you may ground yourself by touching a large metallic object.

- **Remove the logic board** and set the logic board on an anti-static surface.

To reassemble your device, follow these instructions in reverse order.