



PSP 300x UMD Drive Replacement

Guide for removing the UMD Drive of a Sony...

Written By: mbnewsom



INTRODUCTION

Guide for removing the UMD Drive of a Sony PSP-3000



TOOLS:

- [Phillips #1 Screwdriver](#) (1)
- [Phillips #00 Screwdriver](#) (1)
- [Spudger](#) (1)



PARTS:

- [Sony PSP 2000/3000 UMD Drive](#) (1)
- [Sony PSP 2000/3000 UMD Brace](#) (1)
- [Sony PSP 300x Rear Case](#) (1)
- [Sony PSP 3000 UMD Door](#) (1)

Step 1 — Battery



- Place the PSP face down and locate the battery cover on the left side of the device.
- Lift and remove the battery cover to reveal the battery.
- Remove the battery.

Step 2 — Casing



- Peel back the warranty sticker that is behind the battery with a spudger or your fingernail.

Step 3



- Unscrew all four screws from the back of the PSP with the Phillips #00 Screwdriver.
 - Two are located behind the battery's warranty sticker.
 - Two are located on the right side of the PSP.

Step 4



- Next, unscrew the two screws located at the top of the PSP.

Step 5



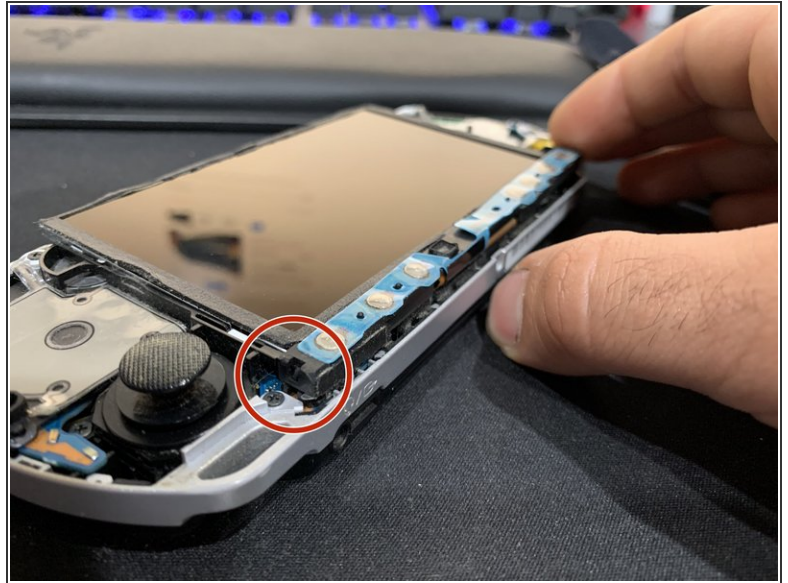
- Then, remove the single screw from the bottom edge of the PSP (which is positioned next to the barcode).

Step 6



- Slide the spudger in between the outer casing of the PSP, beginning at the "R" shoulder button, and gently pry off the casing.
- Remove the front casing completely.

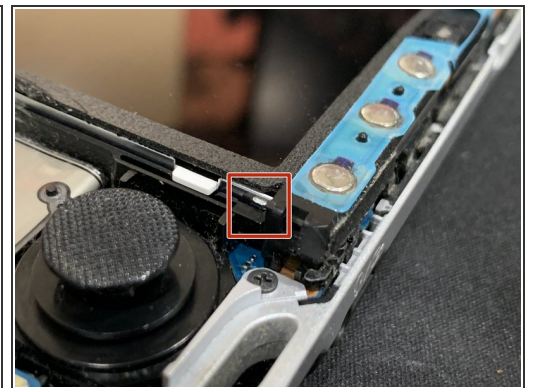
Step 7 — LCD Screen



- Push the homebar to the right to release the tab located on the right side of the LCD screen.

⚠ DO NOT completely remove the homebar, as it is still connected by ribbon cables.

Step 8

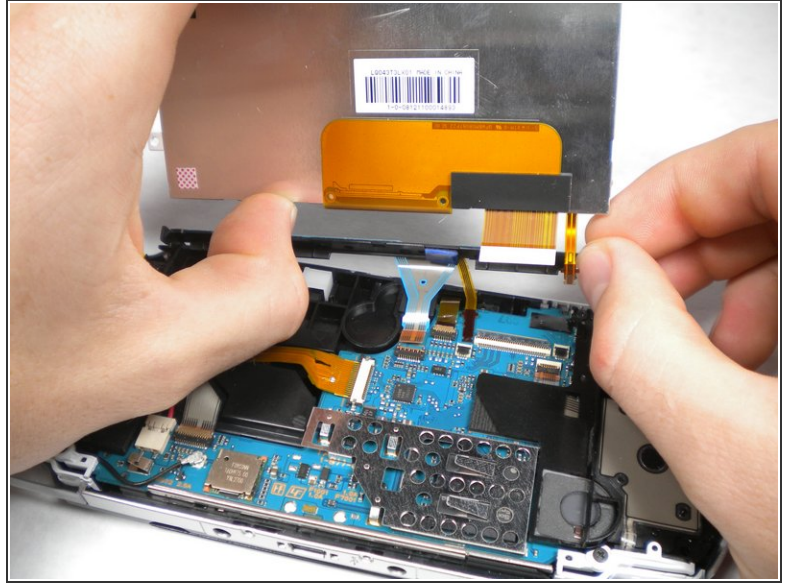
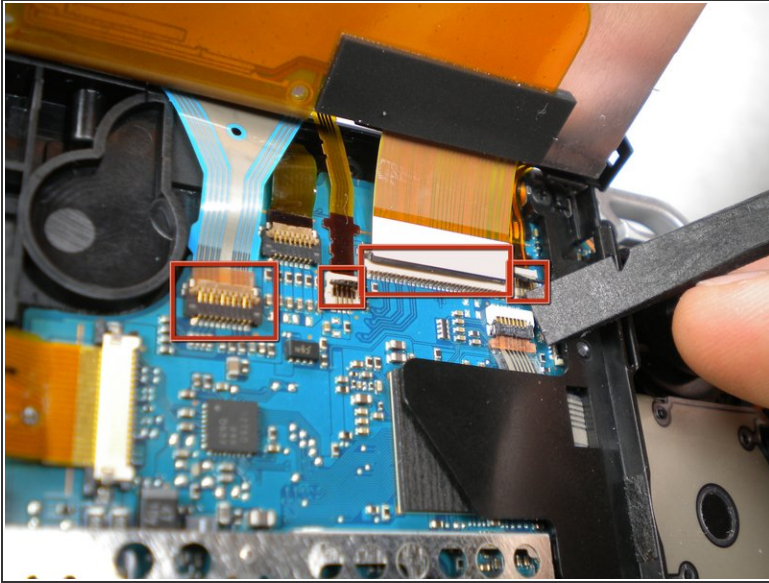


- Slowly lift the LCD screen off the PSP starting at the top edge corner.

⚠ Again, the LCD screen is attached by ribbon cables, so do not remove it completely.

ⓘ Orientation of PSP is flipped in photo.

Step 9



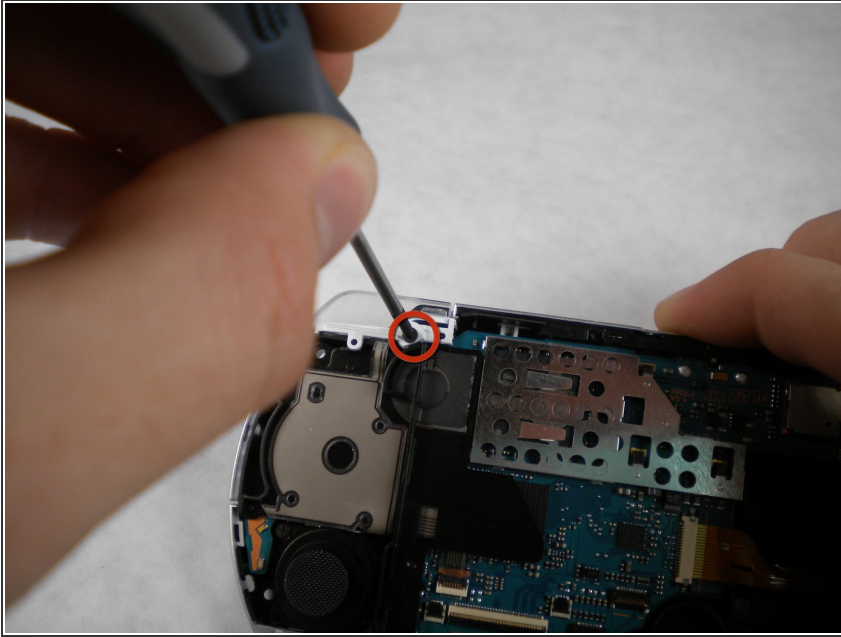
- Flip the small brown locks on the four ribbon cable connectors up using a spudger or fingernail.
- Pull all four ribbon cables out.
- Now remove the LCD screen and homebar from the PSP.

Step 10



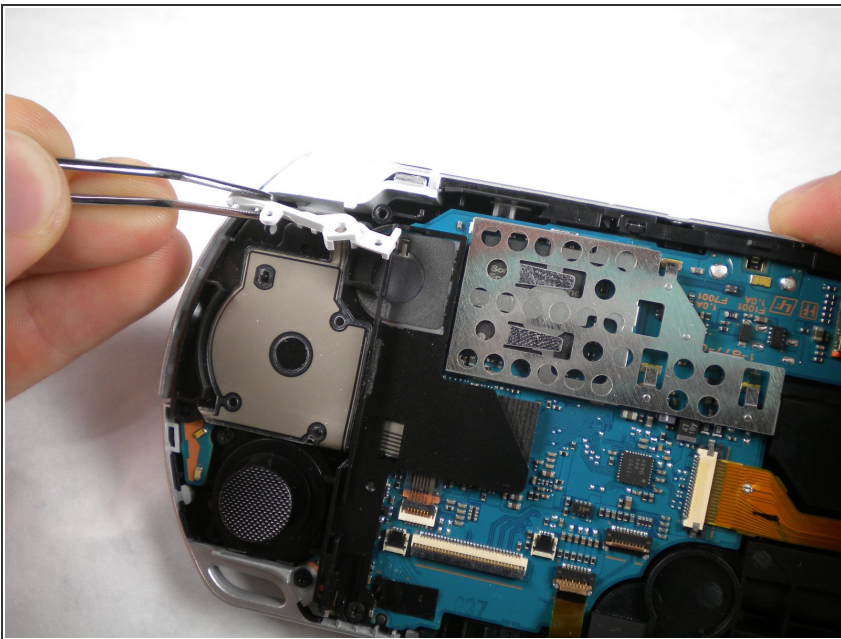
- Remove the metal tab that lies above the LCD screen.
- ☑ Upon reassembly, make note that the stamped lettering faces down, and the large tab fits just above the motherboard to the right hand side of the left trigger.

Step 11 — Trigger Buttons



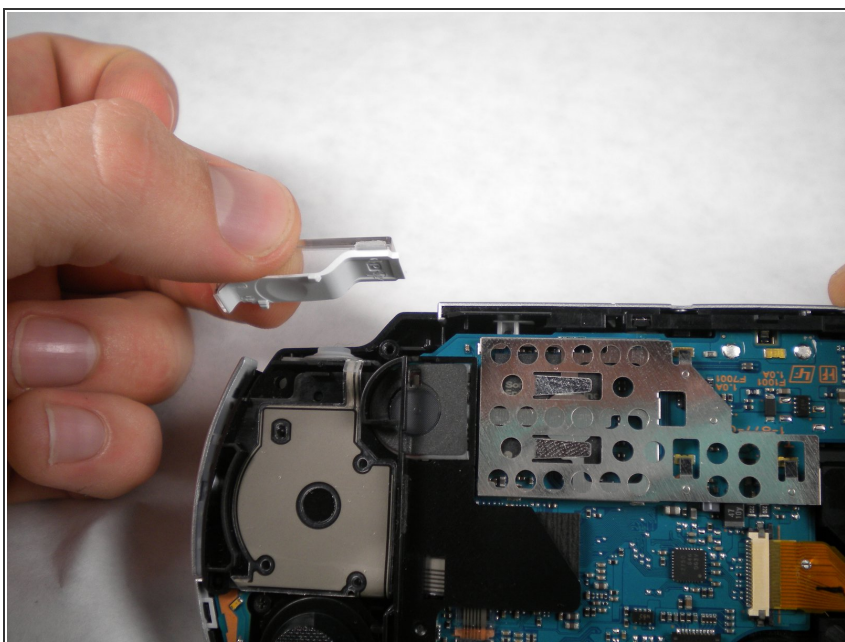
- Remove the screw securing 'L' trigger to the PSP.

Step 12



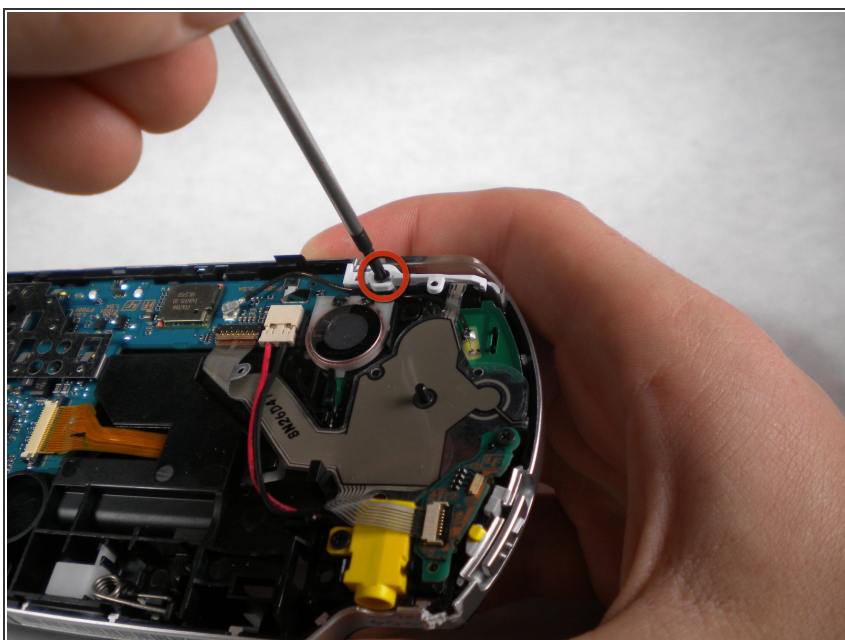
- Remove the white plastic piece that holds the 'L' trigger in place.

Step 13



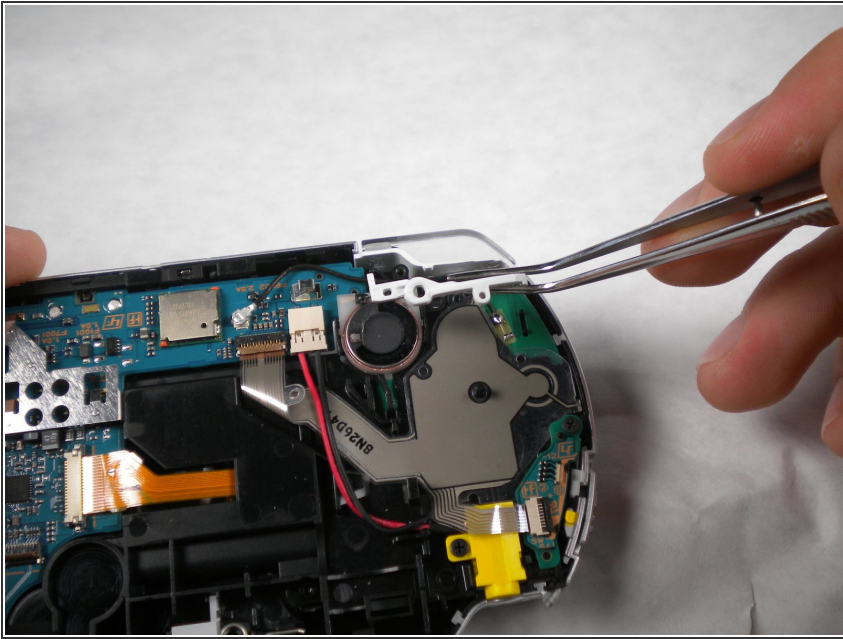
- Remove the 'L' trigger from the PSP.

Step 14



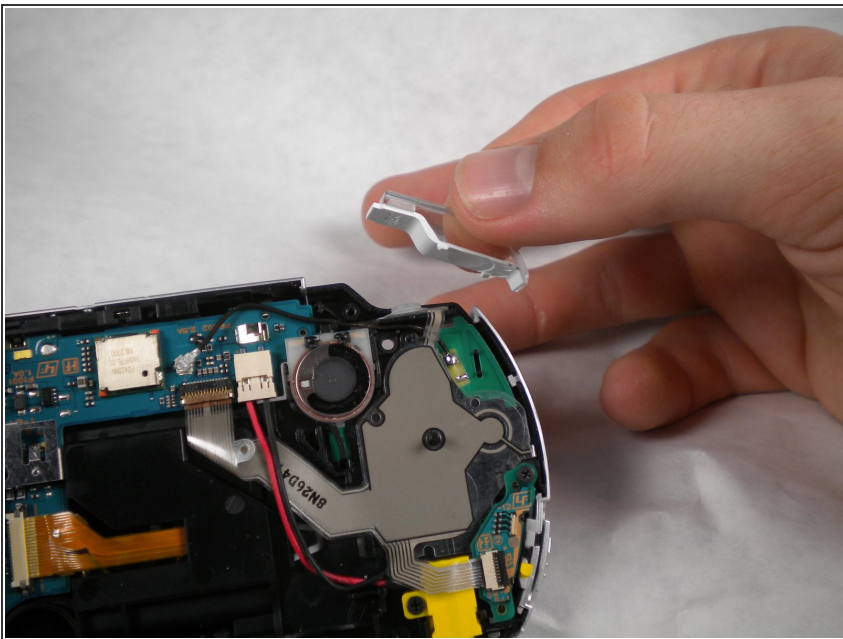
- Remove the screw securing the 'R' trigger.

Step 15



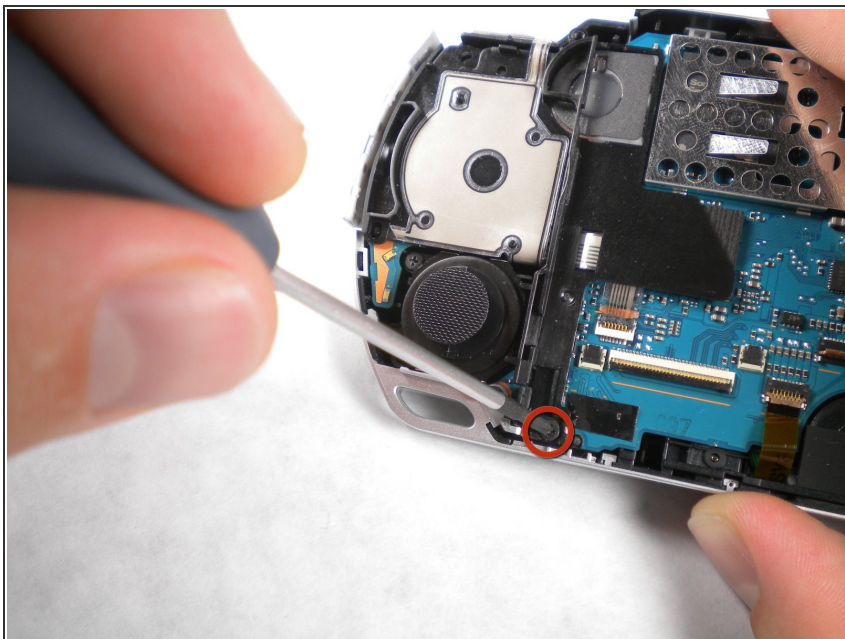
- Remove the white plastic piece that holds the 'R' trigger in place.

Step 16



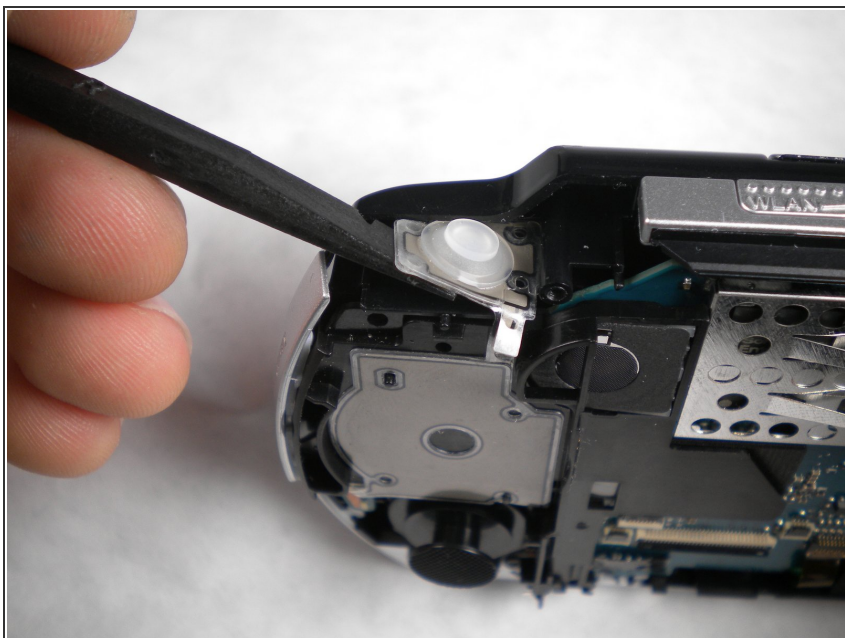
- Remove the 'R' trigger from the PSP.

Step 17 — Analog Stick



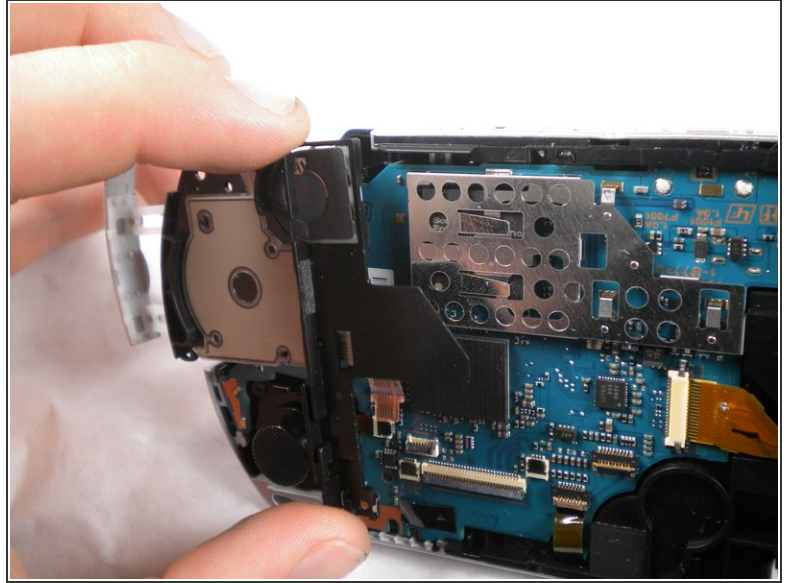
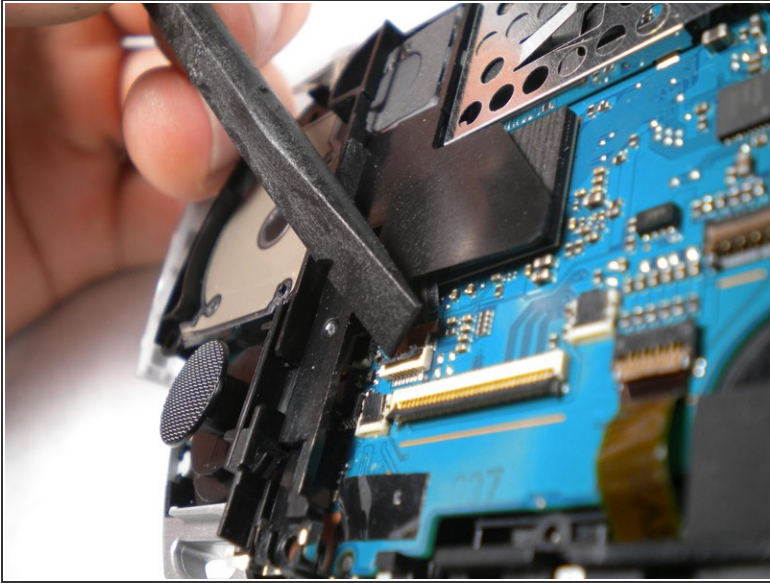
- Remove the screw from the bottom left edge of the PSP.

Step 18



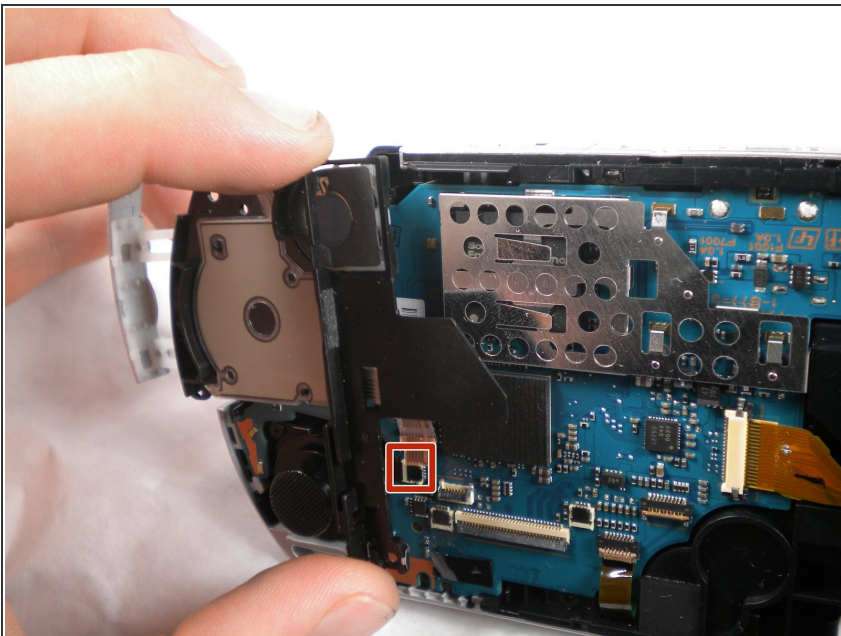
- Being careful not to break the ribbon cable, use the spudger to peel the adhesive button of the the 'L' trigger off the PSP.

Step 19



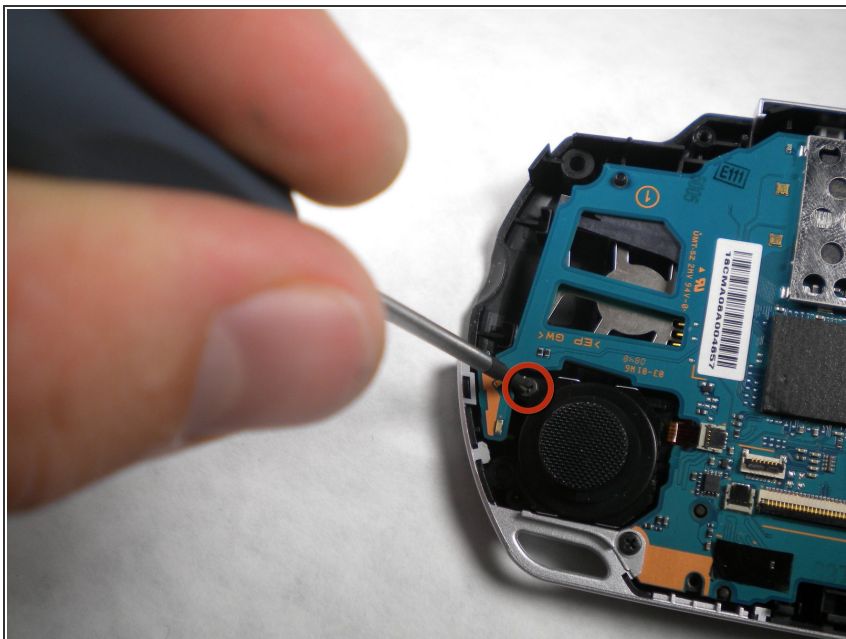
- Using a fingernail or spudger, flip up the retaining bracket on the d-pad and 'L' trigger ribbon cable.
- Lift the black plastic bracket along with the d-pad contact pad, disconnecting the ribbon cable as you lift.

Step 20



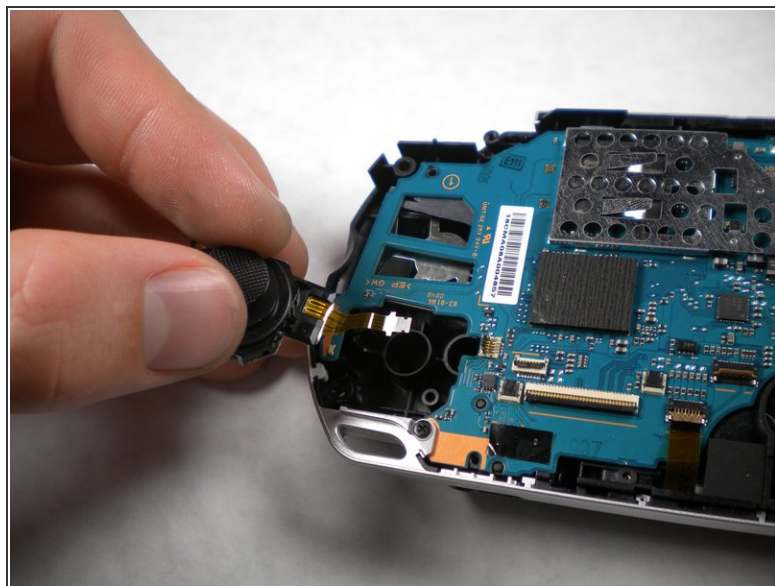
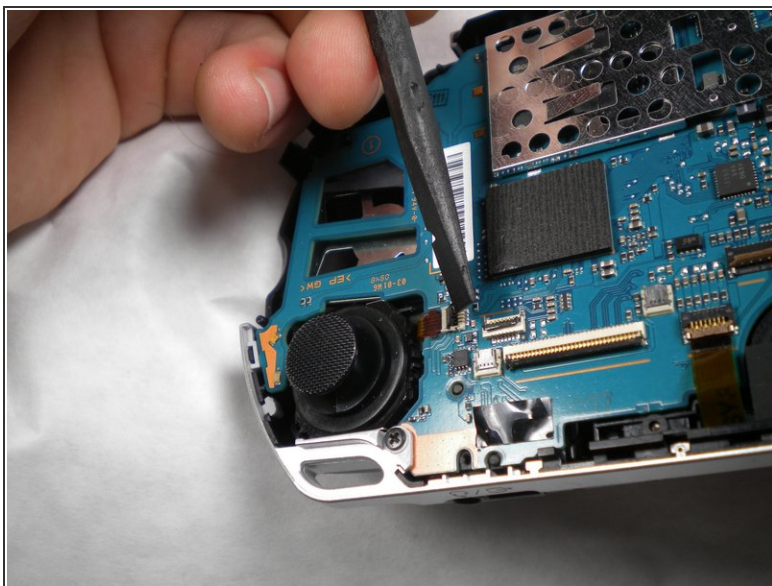
- Remove the cable from the connector and remove the entire black piece from the PSP.

Step 21



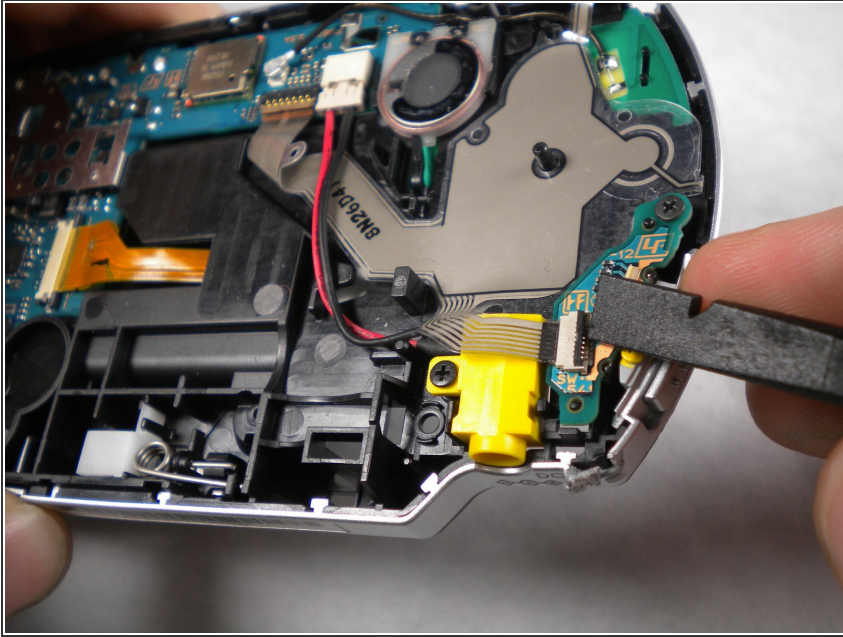
- Remove the screw holding the analog stick in place.

Step 22



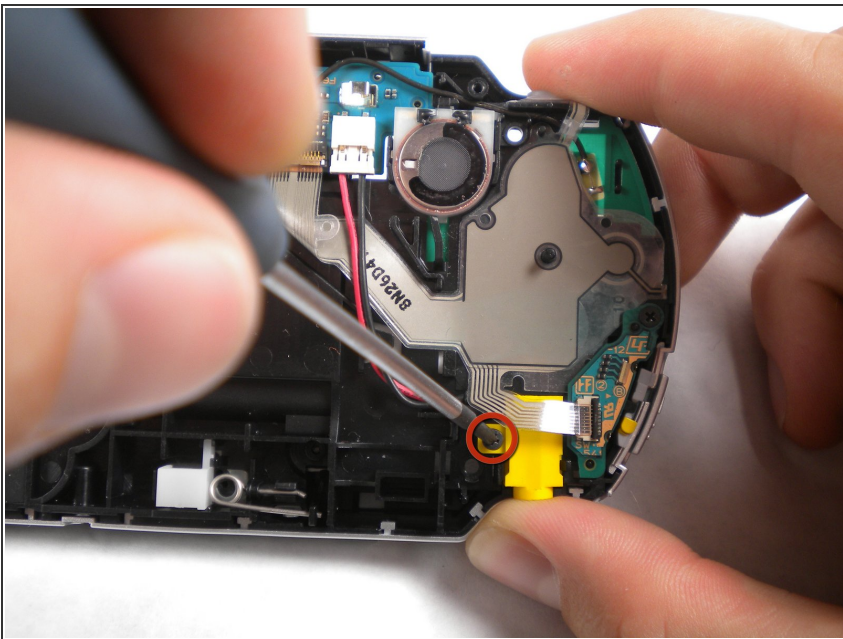
- Flip up the lock on the analog sticks ribbon cable.
- Remove the analog stick from the PSP.

Step 23 — Power Jack



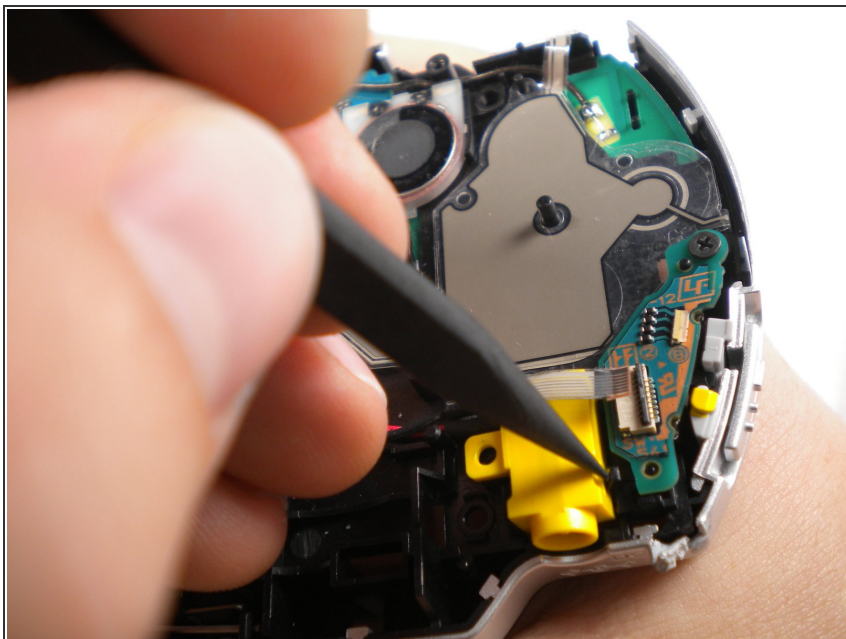
- Flip up the lock and detach the ribbon cable above the power jack.

Step 24



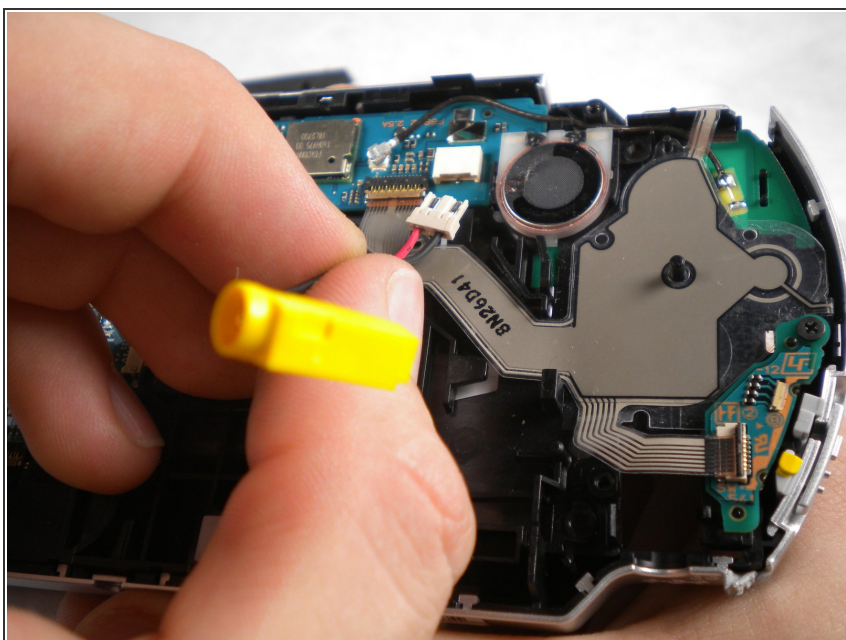
- Remove the screw from the power jack.

Step 25



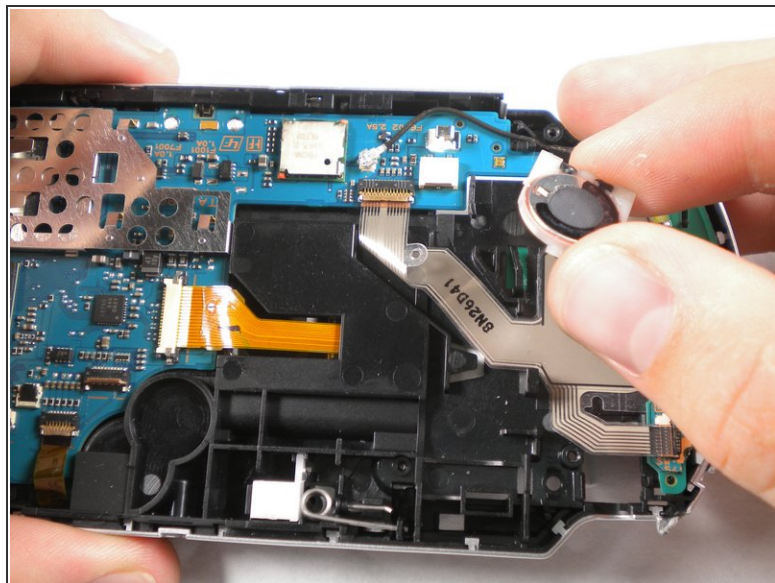
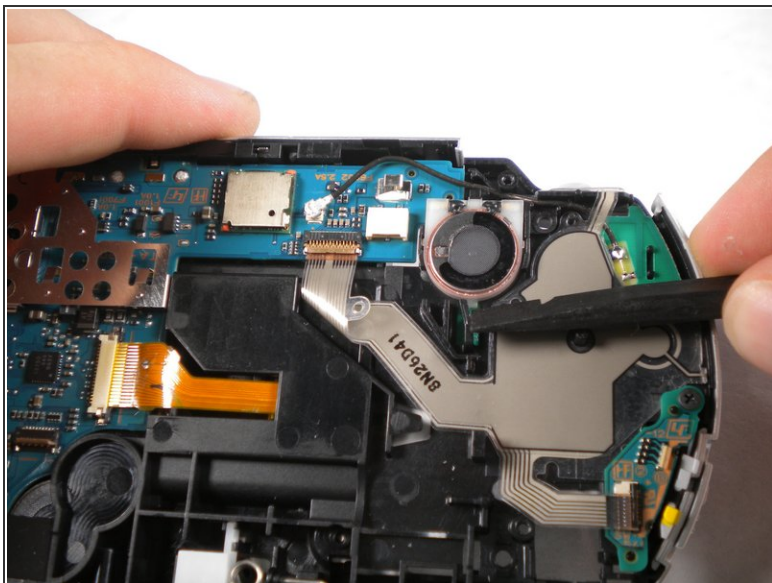
- Carefully bend back the black tab holding the power jack in place and start pulling the jack up to release it from this clip.

Step 26



- Pull the plug connecting the power jack to the motherboard.
- Remove the power jack.

Step 27 — Speaker

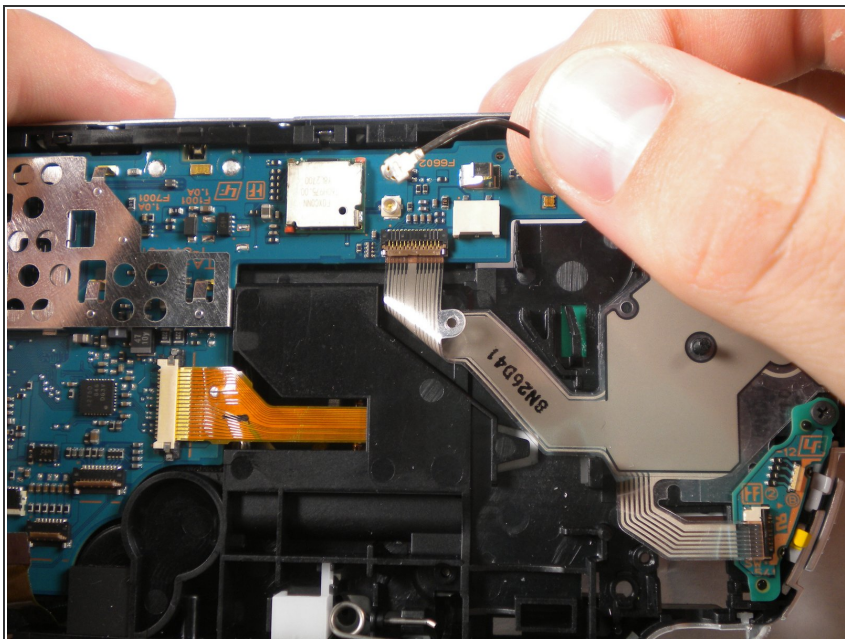


⚠ Push the black tab at the bottom of the speaker to pop the speaker out of place, and remove the speaker.

- The speaker is spring loaded, so be sure to keep an eye on it in case it starts doing flips into the air when you push the tab. Be careful not to lose or damage it!

☑ Make sure the new/replacement speaker does not spring out during reassembly.

Step 28 — Motherboard



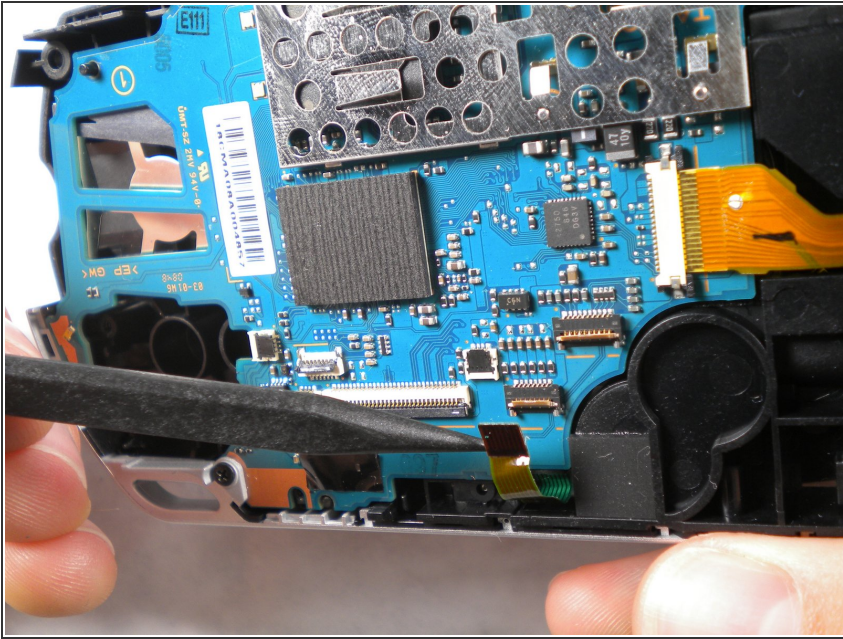
- Remove the cable carefully by lifting upwards from port attached to the motherboard .

Step 29



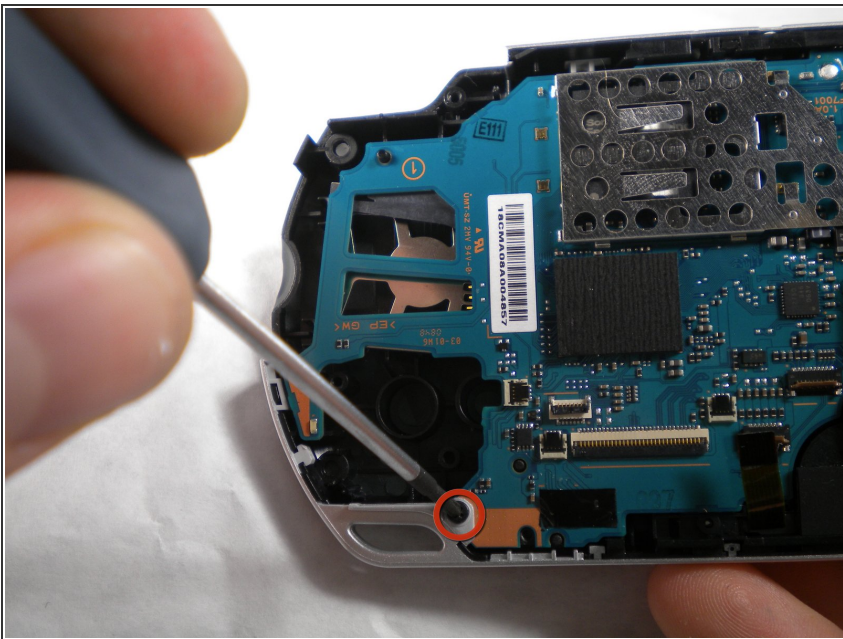
- Flip up both of the locks and remove both cables as shown

Step 30



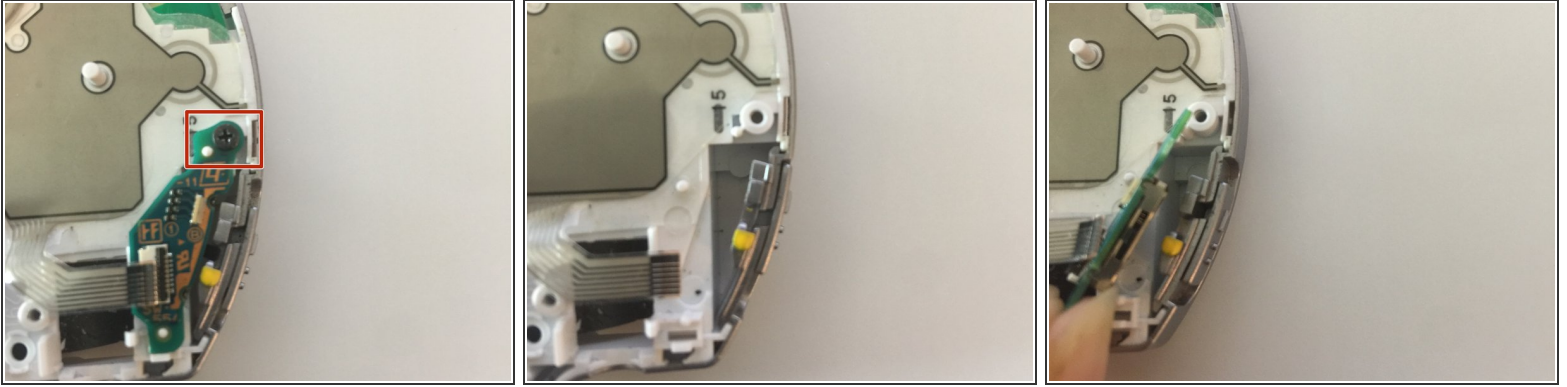
- Flip up the lock and remove the ribbon cable located at the bottom edge of the PSP.

Step 31



- Use a Phillips #00 screwdriver to remove the bottom left screw attached to the PSP

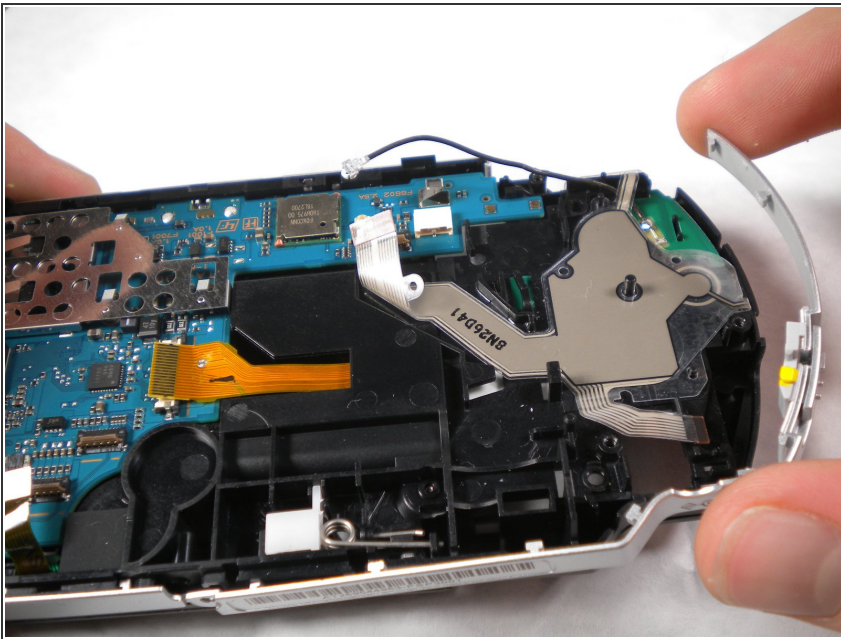
Step 32 — Remove Power Switch Panel



- Remove the screw located at the top of the power switch panel.

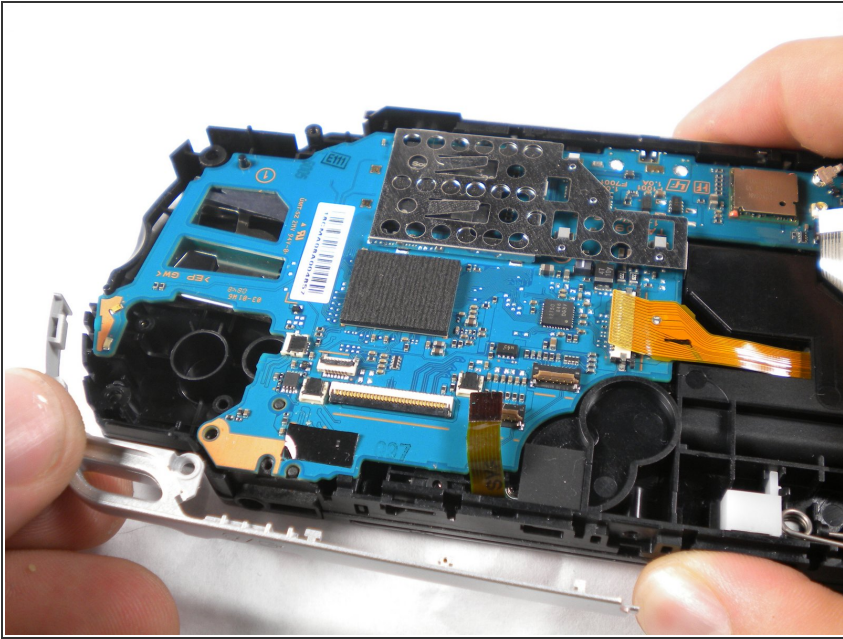
⚠ Gently lift and remove the panel from the switch side

Step 33



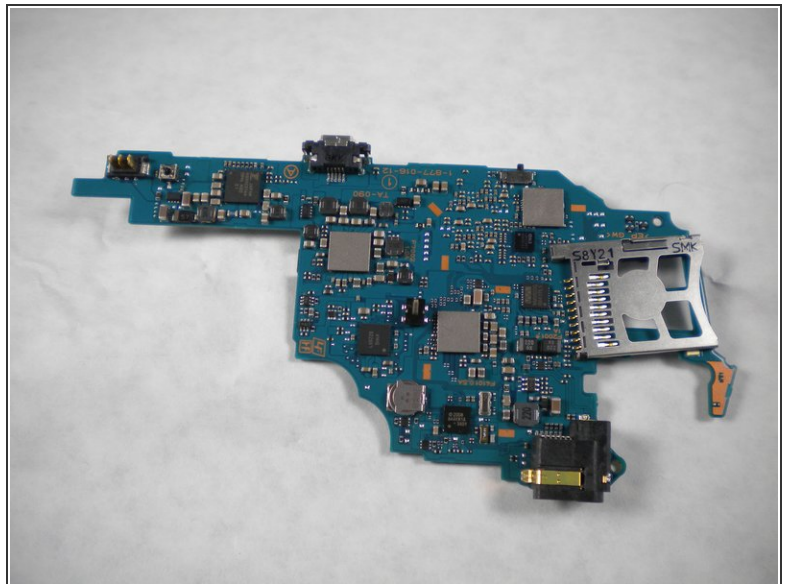
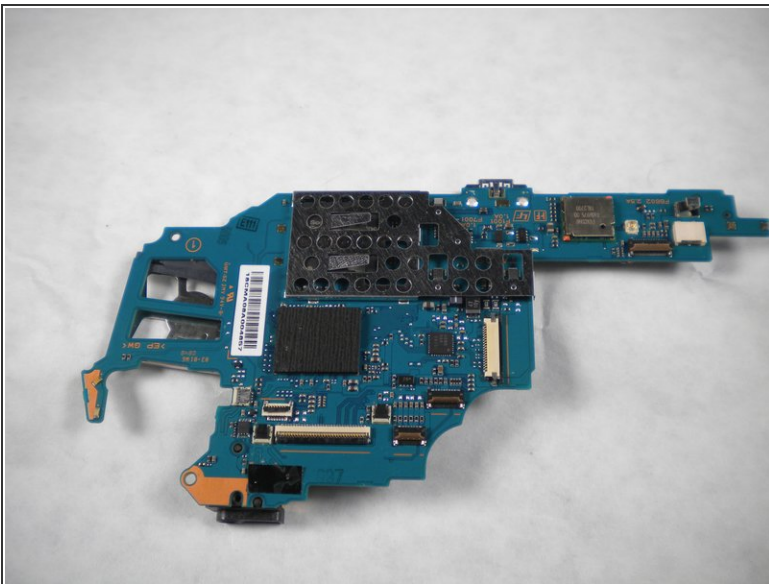
- Remove the silver rim on the right side of the PSP.

Step 34



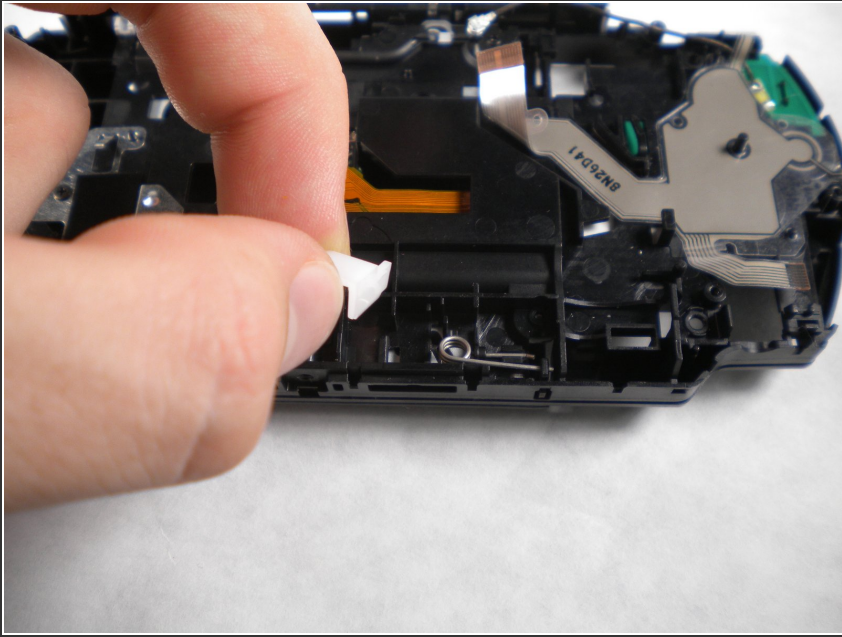
- Remove the silver rim on the left side of the PSP.

Step 35



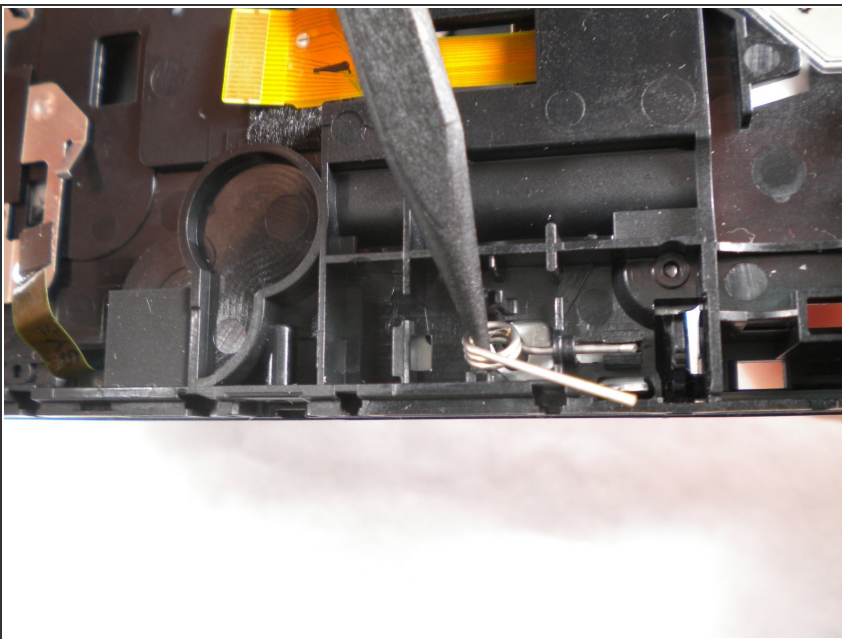
- Remove the motherboard from the PSP

Step 36 — UMD Drive



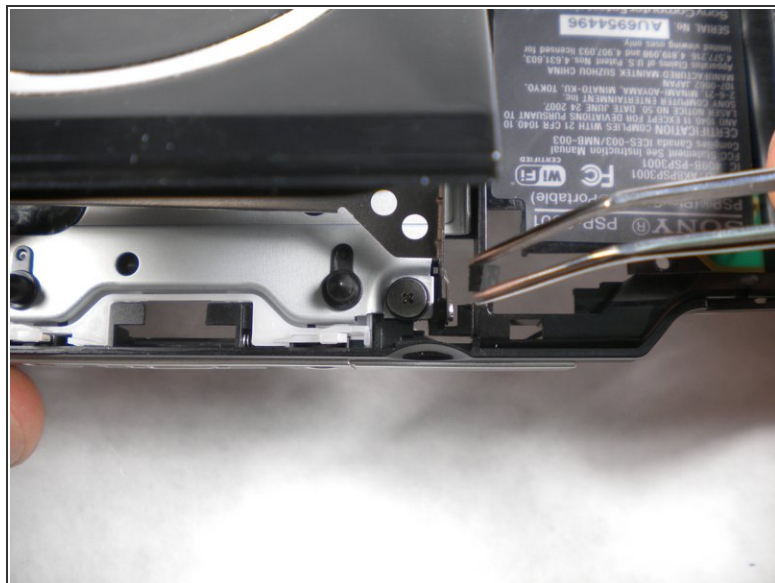
- On the bottom of the back of the PSP, pull the white plastic piece out.

Step 37



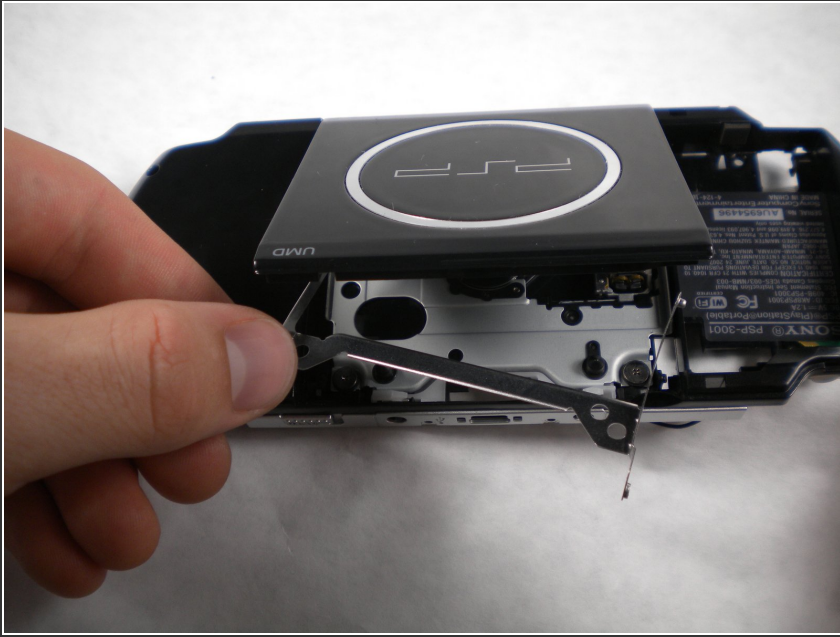
- Use a spudger and pull the spring out and remove it from the PSP.

Step 38



- Open the UMD (disk drive) and locate the two small black rubber squares wedged in the space between the casing and the metal drive hinge on either side.
- Pull these out using a pair of tweezers.

Step 39



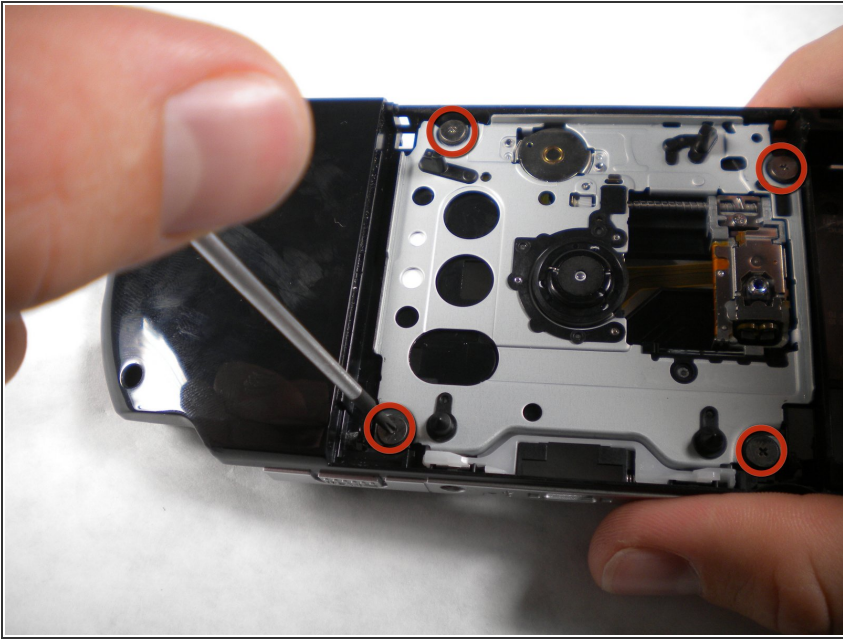
- Detach the metal piece from where it is attached to the body underneath the rubber pieces that were just removed.
- The side of the piece that is closest to the door opening should now be loose. The whole piece should now be slid farther into the drive through the slots.
- Once you slide the piece toward the back of the slots, the side that is still attached can be pried towards the center of the drive on each side to remove it from the slots on the door.

Step 40



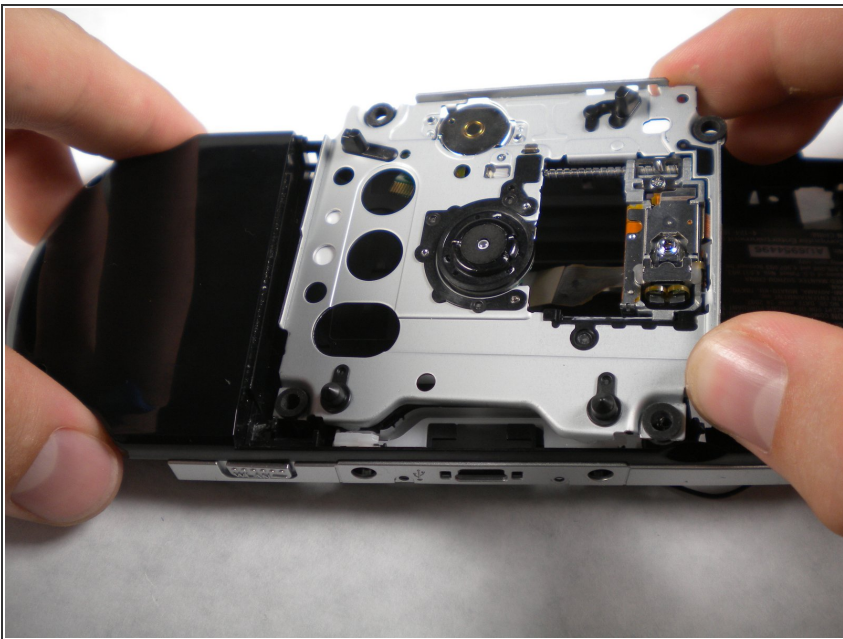
- Grabbing the PSP with both hands, gently pinch the UMD lid towards the right side (the side without the battery).
- Pull up and the the left side carefully to remove the lid from the PSP. (The casing may have to flex a little bit to allow this)

Step 41



- Remove the four screw from the UMD drive.

Step 42



- Remove the UMD Drive.

To reassemble your device, follow these instructions in reverse order.