



PSP 300x LCD Screen Replacement

Guide for replacing the LCD Screen in a Sony...

Written By: mbnewsom



INTRODUCTION

Guide for replacing the LCD Screen in a Sony PSP-3000



TOOLS:

- [Phillips #00 Screwdriver](#) (1)
- [Spudger](#) (1)



PARTS:

- [Sony PSP 3000 LCD](#) (1)
- [Sony PSP 2000 300x LCD Bracket](#) (1)
- [Sony PSP 300x Home Bar Contact Strip](#) (1)
- [Sony PSP 3000 Right Button Contact Cable](#) (1)
- [Sony PSP 3000 Microphone](#) (1)

Step 1 — Battery



- Place the PSP face down and locate the battery cover on the left side of the device.
- Lift and remove the battery cover to reveal the battery.
- Remove the battery.

Step 2 — Casing



- Peel back the warranty sticker that is behind the battery with a spudger or your fingernail.

Step 3



- Unscrew all four screws from the back of the PSP with the Phillips #00 Screwdriver.
 - Two are located behind the battery's warranty sticker.
 - Two are located on the right side of the PSP.

Step 4



- Next, unscrew the two screws located at the top of the PSP.

Step 5



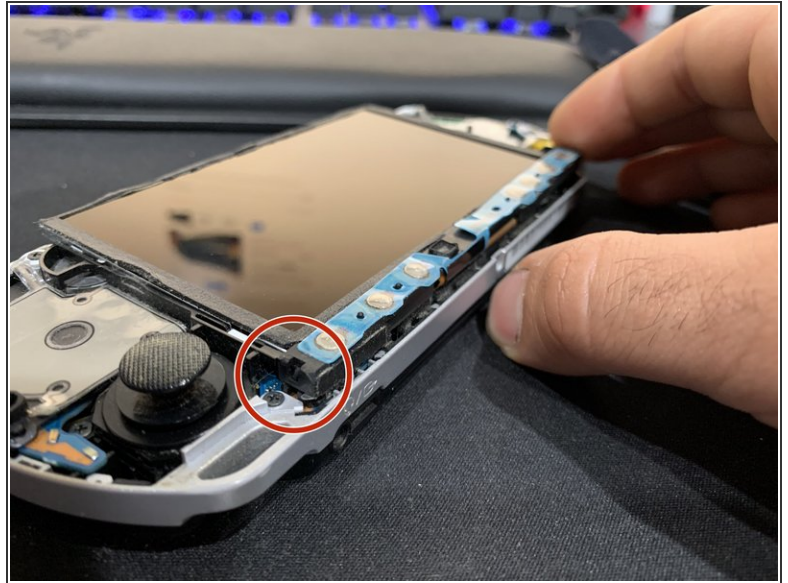
- Then, remove the single screw from the bottom edge of the PSP (which is positioned next to the barcode).

Step 6



- Slide the spudger in between the outer casing of the PSP, beginning at the "R" shoulder button, and gently pry off the casing.
- Remove the front casing completely.

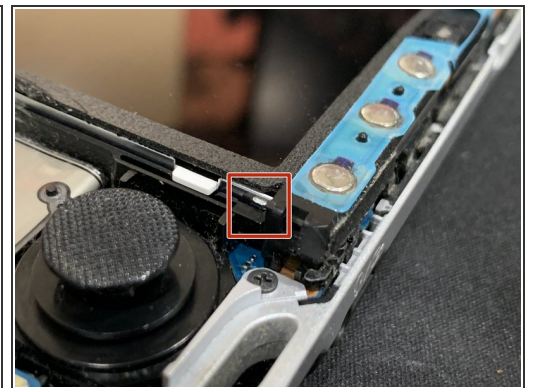
Step 7 — LCD Screen



- Push the homebar to the right to release the tab located on the right side of the LCD screen.

⚠ DO NOT completely remove the homebar, as it is still connected by ribbon cables.

Step 8

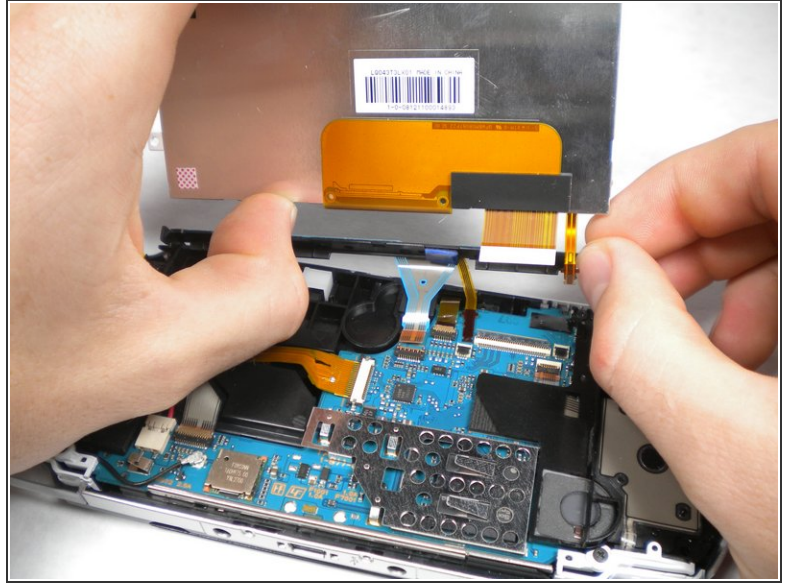
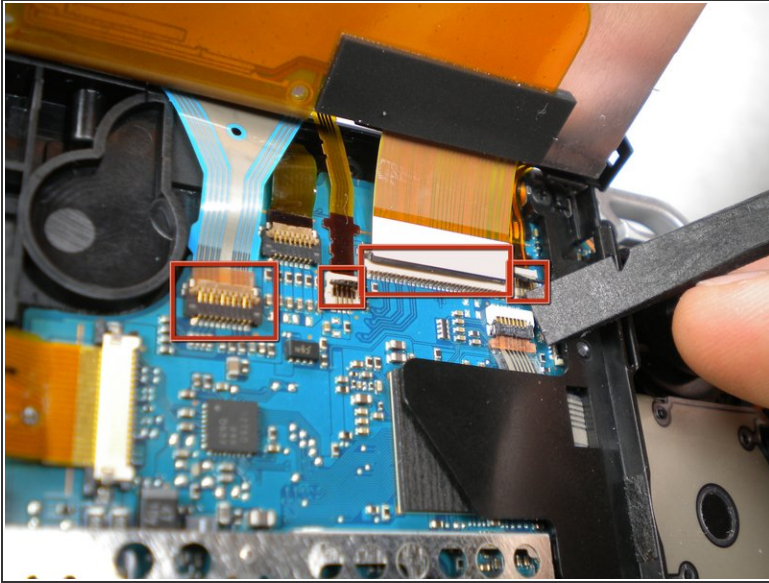


- Slowly lift the LCD screen off the PSP starting at the top edge corner.

⚠ Again, the LCD screen is attached by ribbon cables, so do not remove it completely.

ⓘ Orientation of PSP is flipped in photo.

Step 9



- Flip the small brown locks on the four ribbon cable connectors up using a spudger or fingernail.
- Pull all four ribbon cables out.
- Now remove the LCD screen and homebar from the PSP.

Step 10



- Remove the metal tab that lies above the LCD screen.
- ☑ Upon reassembly, make note that the stamped lettering faces down, and the large tab fits just above the motherboard to the right hand side of the left trigger.

To reassemble your device, follow these instructions in reverse order.