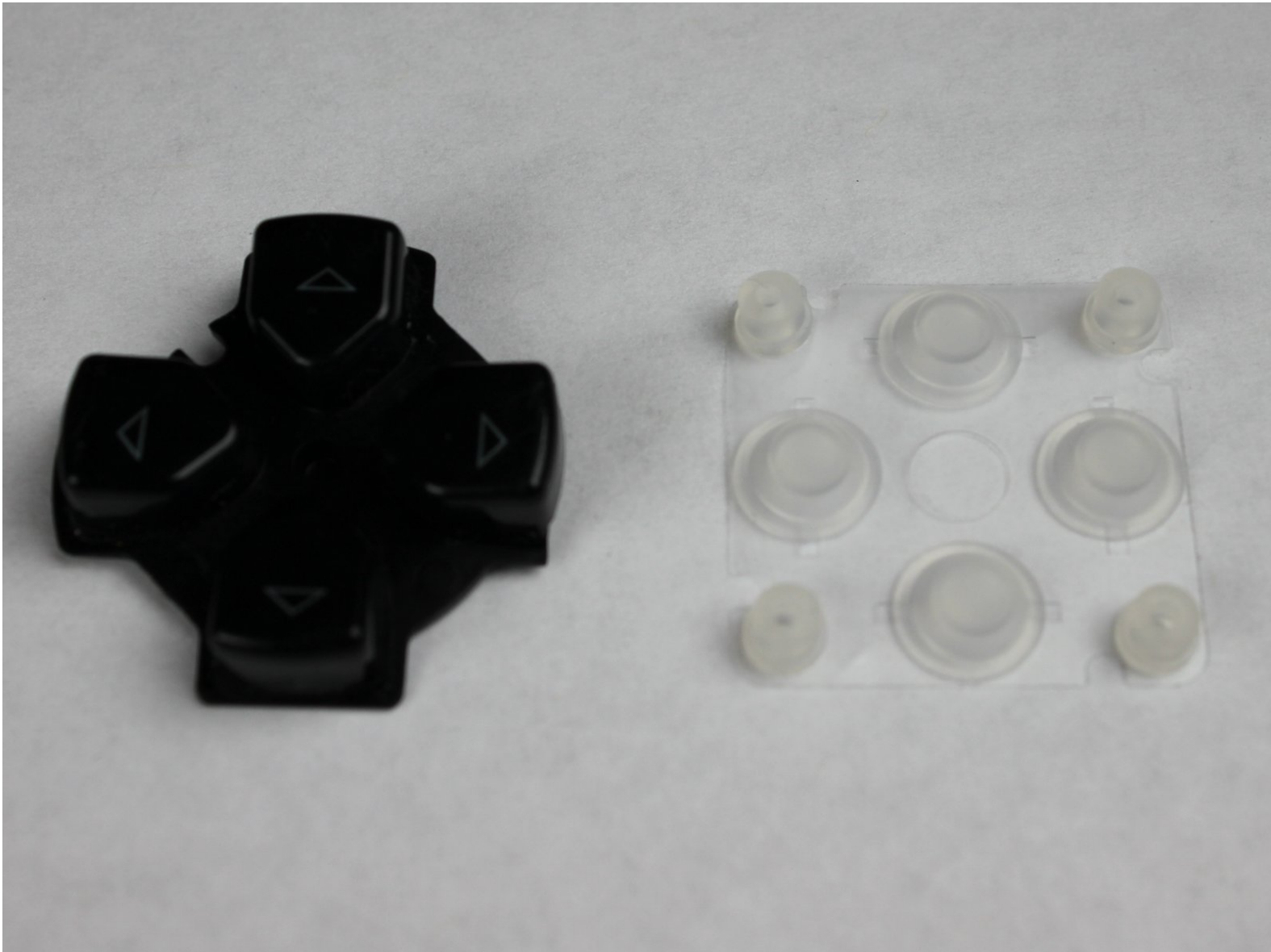




PSP 300x D-Pad Replacement

Steps for replacing malfunctioned directional...

Written By: mbnewsom



INTRODUCTION

Steps for replacing malfunctioned directional pads in a Sony PSP-3000



TOOLS:

- [Phillips #00 Screwdriver](#) (1)
- [Spudger](#) (1)



PARTS:

- [Sony PSP 3000 Button Set](#) (1)

Step 1 — Battery



- Place the PSP face down and locate the battery cover on the left side of the device.
- Lift and remove the battery cover to reveal the battery.
- Remove the battery.

Step 2 — Casing



- Peel back the warranty sticker that is behind the battery with a spudger or your fingernail.

Step 3



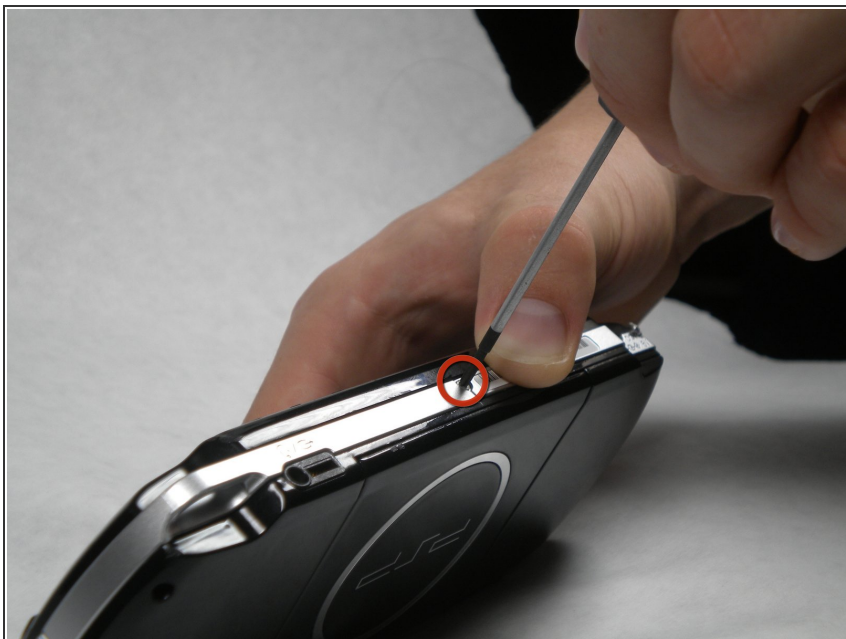
- Unscrew all four screws from the back of the PSP with the Phillips #00 Screwdriver.
 - Two are located behind the battery's warranty sticker.
 - Two are located on the right side of the PSP.

Step 4



- Next, unscrew the two screws located at the top of the PSP.

Step 5



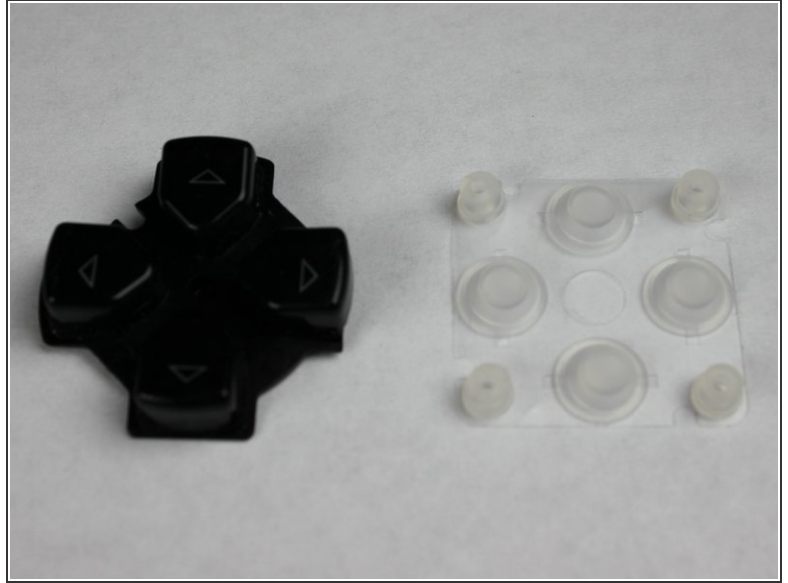
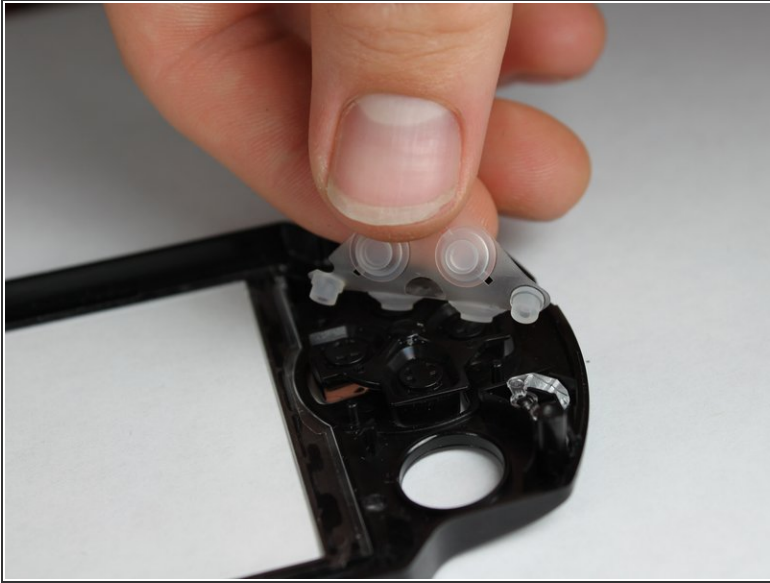
- Then, remove the single screw from the bottom edge of the PSP (which is positioned next to the barcode).

Step 6



- Slide the spudger in between the outer casing of the PSP, beginning at the "R" shoulder button, and gently pry off the casing.
- Remove the front casing completely.

Step 7 — D-Pad



- Peel up the rubber pad that is securing the D-pad buttons to the backside of the front casing.
- Remove the D-pad and the rubber piece.

To reassemble your device, follow these instructions in reverse order.